

Clark University

Clark Digital Commons

Geography

Faculty Works by Department and/or School

2020

Forest-linked livelihoods in a globalized world

Johan A. Oldekop

University of Michigan, Ann Arbor

Laura Vang Rasmussen

University of Michigan, Ann Arbor

Arun Agrawal

University of Michigan, Ann Arbor

Anthony J. Bebbington

Clark University, abebbington@clarku.edu

Patrick Meyfroidt

Université Catholique de Louvain

See next page for additional authors

Follow this and additional works at: https://commons.clarku.edu/faculty_geography



Part of the [Forest Management Commons](#), and the [Geography Commons](#)

Repository Citation

Oldekop, Johan A.; Rasmussen, Laura Vang; Agrawal, Arun; Bebbington, Anthony J.; Meyfroidt, Patrick; Bengston, David N.; Blackman, Allen; Brooks, Stephen; Davidson-Hunt, Iain; Davies, Penny; Dinsi, Stanley C.; Fontana, Lorenza B.; Gumucio, Tatiana; Kumar, Chetan; Kumar, Kundan; Moran, Dominic; Mwampamba, Tuyeni H.; Nasi, Robert; Nilsson, Margareta; Pinedo-Vasquez, Miguel A.; Rhemtulla, Jeanine M.; Sutherland, William J.; Watkins, Cristy; and Wilson, Sarah J., "Forest-linked livelihoods in a globalized world" (2020). *Geography*. 429.

https://commons.clarku.edu/faculty_geography/429

This Article is brought to you for free and open access by the Faculty Works by Department and/or School at Clark Digital Commons. It has been accepted for inclusion in Geography by an authorized administrator of Clark Digital Commons. For more information, please contact larobinson@clarku.edu, cstebbins@clarku.edu.

Authors

Johan A. Oldekop, Laura Vang Rasmussen, Arun Agrawal, Anthony J. Bebbington, Patrick Meyfroidt, David N. Bengston, Allen Blackman, Stephen Brooks, Iain Davidson-Hunt, Penny Davies, Stanley C. Dinsi, Lorenza B. Fontana, Tatiana Gumucio, Chetan Kumar, Kundan Kumar, Dominic Moran, Tuyeni H. Mwampamba, Robert Nasi, Margareta Nilsson, Miguel A. Pinedo-Vasquez, Jeanine M. Rhemtulla, William J. Sutherland, Cristy Watkins, and Sarah J. Wilson

Forest-linked Livelihoods in a Globalized World

Johan A Oldekop^{1, 2§*}, Laura Vang Rasmussen^{1, 3*}, Arun Agrawal¹, Anthony J Bebbington^{2, 4}, Patrick Meyfroidt^{5, 6}, David N Bengston⁷, Allen Blackman^{8, 9}, Stephen Brooks¹⁰, Iain Davidson-Hunt¹¹, Penny Davies¹², Stanley C Dinsi¹³, Lorenza B Fontana¹⁴, Tatiana Gumucio^{15, 16}, Chetan Kumar¹⁷, Kundan Kumar¹⁸, Dominic Moran¹⁹, Tuyeni H Mwampamba²⁰, Robert Nasi²¹, Margareta Nilsson²², Miguel A Pinedo-Vasquez^{16, 23}, Jeanine M Rhemtulla²⁴, William J Sutherland²⁵, Cristy Watkins¹, Sarah J Wilson¹

¹Forests and Livelihoods: Assessment, Research and Engagement (FLARE) Network, School for Environment and Sustainability, The University of Michigan, MI 48109, USA

²Global Development Institute, University of Manchester, M13 9PL, UK

³Department of Geosciences and Natural Resource Management, The University of Copenhagen, 1350 K, Denmark

⁴Graduate School of Geography, Clark University, MA01610, USA

⁵Georges Lemaître Centre for Earth and Climate Research, Earth and Life Institute, UCLouvain, Louvain-la-Neuve 1348, Belgium

⁶F.R.S.-FNRS, 1000 Brussels, Belgium

⁷Strategic Foresight Group, Northern Research Station, USDA Forest Service, MN 55108, USA

⁸Resources for the Future, Washington DC, 200236, USA

⁹Inter-American Development Bank, Washington DC, 20577, USA

¹⁰Office of Land and Urban, Bureau for Economic Growth, Education and Environment, U. S. Agency for International Development, Washington DC, USA

¹¹Natural Resources Institute, University of Manitoba, R3T 2M6, Canada

¹²Ford Foundation, NY 10018, USA

¹³Network for Environment and Sustainable Development in Central Africa, Yaoundé, Cameroon

¹⁴Politics Department, Newcastle University, NE1 7RU, UK

¹⁵International Center for Tropical Agriculture (CIAT), Cali, Colombia

¹⁶International Research Institute for Climate and Society, Earth Institute, Columbia University, NY 10964, USA

¹⁷International Union for Conservation of Nature (IUCN), Washington, DC 20009, USA

¹⁸Rights and Resources Initiative, Washington, DC 20007, USA

¹⁹Global Academy of Agriculture and Food Security, The Royal (Dick) School of Veterinary Studies and The Roslin Institute, University of Edinburgh, EH25 9RG, Scotland.

²⁰Institute for Ecosystems and Sustainability Research, National Autonomous University of Mexico (UNAM), Michoacán, Mexico

²¹Center for International Forestry Research (CIFOR), Bogor 16115, Indonesia

²²The International Land and Forest Tenure Facility, Stockholm 105 33, Sweden

²³Earth Innovation Institute, CA 94111, USA

²⁴Department of Forest and Conservation Sciences, University of British Columbia, V6T 1Z4, Canada

²⁵Department of Zoology, University of Cambridge, CB2 3QZ, UK

§To whom correspondence should be addressed.

*Both authors contributed equally to this work.

Abstract. Forests have re-taken centre stage in global conversations about sustainability, climate, and biodiversity. Here, we use a horizon scanning approach to identify five large-scale trends that are likely to have substantial medium- and long-term effects on forests and forest livelihoods: forest mega-disturbances; changing rural demographics; the rise of the middle-class in low- and middle-income countries; increased availability, access, and use of digital technologies; and large-scale infrastructure development. These trends represent human and environmental processes that are exceptionally large in geographical extent and magnitude, and difficult to reverse. They are creating new agricultural and urban frontiers, changing existing rural landscapes and practices, opening spaces for novel conservation priorities, and facilitating an unprecedented development of monitoring and evaluation platforms that can be used by local communities, civil society organisations, governments, and international donors. Understanding these larger-scale dynamics is key to support not only the critical role of forests in meeting livelihood aspirations locally, but also a range of other sustainability challenges more globally. We argue that a better understanding of these trends and the identification of levers for change requires that the research community continue to build on case studies that have dominated research efforts so far, but place a greater emphasis on causality and causal mechanisms, and generate a deeper understanding of how local, national, and international geographical scales interact.

Introduction. Forests provide essential livelihoods and environmental services. They harbour a disproportionate amount of the world's biodiversity, regulate key aspects of the global carbon cycle and weather patterns, and contribute directly to national incomes and the local livelihoods of millions of people worldwide. Their role in sustainability transitions is re-emphasised by multiple current international sustainability agendas. Forests can be linked to most - if not all - of the Sustainable Development Goals through contributions to ecosystem services, green economic opportunities, and social and environmental justice agendas^{1,2}. Forests are also essential to the Paris Climate Agreement,³ the Aichi Biodiversity Targets and the Post-2020 Global Biodiversity Framework^{4,5}. Further, the Bonn Challenge aims to bring under restoration 350 Mha of degraded lands globally by 2030, and the New York Declaration on Forests identifies 10 specific global forest goals⁶. Forests are a key mechanism for mitigating climate change through forest protection, restoration, and afforestation^{7,8}.

90 This prominent attention to forests, especially in human-dominated tropical and subtropical regions, creates a need for a comprehensive policy-oriented research agenda.

Research on forests and livelihoods has typically focused on trying to understand how household or community-level dynamics, including rights to resources and land-use decisions, affect local livelihoods and forests⁹. However, new research on forests demonstrates the importance of links between human and natural systems at regional, inter-continental, and global scales¹⁰. For example, demand for commodity crops in Europe, North America, and emerging economies is driving environmental degradation in the Amazon, Congo Basin, and Indonesian peatlands¹¹. In turn, smoke from forest and peat fires in Indonesia affects human health in Southeast Asian countries¹². Identifying and understanding large-scale processes linked to forests and livelihoods with disproportionate effects on sustainability, climate change solutions, and biodiversity conservation is particularly important for policy and action.

For this Perspective, we used a systematic horizon scanning approach¹³ to identify and analyse five important trends that reflect large-scale human and environmental processes: forest mega-disturbances; changing rural demographics; the rise of the middle-class in low- and middle-income countries; increased availability, access, and use of digital technologies; and large-scale infrastructure development. These trends are not yet widely understood, and could act as both negative and positive disruptive forces for forests and forest livelihoods in the coming decade.

The research community must complement existing approaches to studying forests and livelihoods to understand how local livelihoods are influenced by large-scale socioeconomic and biophysical processes, including those driven by human-driven climate change and technological development. To help overcome current limitations, research on forests and livelihoods needs to implement three inter-related conceptual and methodological changes. These are: i) a more systematic focus on causal analysis to identify and characterize causal relationships and interactions between factors causing changes in forest conditions and forest-linked livelihoods; and ii) a closer examination of relationships across geographical and temporal scales to tease apart relative effects of different processes, their spatial heterogeneity, and how they accumulate at local, national, international levels. Securing these deeper insights and unravelling how externally-driven biophysical, economic and political processes affect

local decision-making and forests will require iii) a greater use and integration of publicly available data with household- or community-level case studies.

125

Global trends and local communities. The five trends that we identify represent human and environmental processes that are exceptionally large in geographical extent and magnitude, and difficult to reverse. These trends are driven by a complex set of factors that are external to rural communities at national, regional, inter-continental, and global scales. This includes biophysical processes shaping environmental dynamics (e.g., forest mega-disturbances), as well as political and economic processes driven by private and public elites (e.g., large-scale infrastructure development). Their effects result from the interaction between these external forces and local dynamics and responses. The five trends constitute new challenges to our understanding of forests and livelihood links. Gaining a better understanding of their potential effects and interactions provides a forward-looking lens with clear implications for policy and practice.

The trends we highlight were identified using an iterative horizon scanning approach. Horizon scanning exercises help identify emerging threats and opportunities¹³, and have been adopted by a range of public and private sector bodies¹⁴. Despite their demonstrated utility¹⁵, horizon scanning exercises remain underused, particularly in sustainable development fields undergoing rapid, complex, and uncertain changes¹⁶. As a first step to identify emerging trends, the Forests and Livelihoods: Assessment Research and Engagement (FLARE) network held an open consultation using an online submission platform (led by JAO, LVR, AA, CW, and SW) during spring of 2016 and convened an expert panel to form a horizon scanning group (all remaining authors) working in forest and rural development sectors. Panel members were selected to represent a range of *i*) academic, and governmental and non-governmental institutions, including international donor organizations; *ii*) subject expertise, including forest ecology and management, political science, economics, and geography; as well as *iii*) region-specific knowledge in Asia, Africa, Europe, and North and South America.

As part of the consultation, policy makers, practitioners, and scholars - including expert panel members - were invited to submit, independently or in consultation with others, two to five trends they considered to be critical, emerging, and linked to forest conservation and human well-being within the context of the post-2015 development agenda. Submissions were required to comply with three criteria: 1) be

155

related to forests and wellbeing; 2) be formulated as a general topic area rather than as a research question, and 3) encompass a spatial and temporal scope that could be addressed through a realistic research design. The consultation led to 98 trends submitted by 136 people based in 23 countries in Asia, Africa, Europe, and North and South America.

We used a modified Delphi technique¹³ to iteratively assess individual trends and produce a final shortlist. The horizon scanning group first independently ranked the 98 submitted trends through an online ranking exercise. These ranks were combined to produce an initial long-list of 36 trends (approximately a third of the individual submissions). Closely related or overlapping topics were combined at this stage. The horizon scanning group then met in person in Edinburgh in December 2016, where each trend was discussed, refined, and ranked again in a day-long plenary session. The outcome of the Edinburgh meeting was a shortlist of 16 trends with highest mean rank. Sub-groups were then tasked to review and write summaries of each trend, and these were further refined, combined, and agreed upon in a suite of email exchanges to generate the final set of five, which we discuss here. No long- or short-list could conceivably cover all emerging trends, nor could one expect full consensus on their importance. Further, no panel can claim perfect representation and it is conceivable that a group with a different composition of disciplinary and geographical expertise might have arrived at somewhat different framings of global trends. However, given that they would have been working with the same 98 submissions, there is reason to expect that these framings would not have been substantially different. Furthermore, there is clear evidence in the literature that the five trends identified here are playing a substantial role in the creation of new agricultural, extractive and urban frontiers, the transformation of existing rural landscapes and practices, the opening of spaces for new conservation priorities, and the construction of radically different platforms for monitoring, evaluation and surveillance.

Trend 1: Forest mega-disturbances. Contemporary climate change policy and actions will not keep global temperature changes well below the 2°C threshold¹⁷, the current target established under the Paris Agreement in 2015. The impact of climate change on forests and the role of forests in reducing or exacerbating climate change will increasingly place both forests and the communities that depend on them in the global spotlight. Exceptional droughts¹⁸ and excessive precipitation¹⁹ are already increasing

forests' susceptibility to diseases and human-induced wildfires and floods. These stressors are causing forest defoliation and tree mortality²⁰, and declines in forest productivity at unprecedented spatial scales (Fig. 1a). Consequences of significant tropical forest clearance are sometimes experienced thousands of kilometres from where disturbances occur²¹, and the cumulative effects of these processes are threatening both an extraordinary number of species²² and the provision of forest-derived ecosystem services, at global, regional and local scales²³. Furthermore, there is accumulating evidence about the links between forest disturbance, human-forest system interactions, and the emergence of zoonotic diseases with the potential to spread globally²⁴. While the exact origins of COVID-19 are still to be determined, it has demonstrated, together with other zoonotic diseases like SARS, HIV, and Ebola, the devastating social and economic significance of pandemics, and highlighted another crucial aspect of the linkages between human-forest relations and global change.

Policy responses to these forest-mega disturbances will require strategic use of particular types of forests (e.g., intact and second-growth forests, agroforests, and plantations) for livelihood support, conservation, and climate change mitigation - including bioenergy production, forest protection, biodiversity conservation, and carbon capture and storage. Transformed forest landscapes and forest-based climate change mitigation and adaptation efforts - including wide-scale forest landscape restoration initiatives - will provide new opportunities and challenges for forest-dependent communities. Opportunities and challenges are likely to arise from efforts to align (or not) forest conservation and restoration with other priorities of sustainability agendas, including equity, poverty-alleviation and rights to land and resources. For example, the Bonn Challenge, launched in 2011 and extended in 2014 by the New York Declaration on Forests, has a target of restoring 350 million hectares across the globe by 2030 - which equals 3% of the global ice-free land area. However, in many low- and middle-income countries, where land is often in short supply and subject to multiple different demands, including food production and conservation, restoration will have to be implemented synergistically with other land uses²⁵.

220

Trend 2: Changing rural demographics. Forest-reliant communities are experiencing an unprecedented exodus - predominantly of working-aged men²⁶. For example, rural to urban migration in China after the easing of movement restrictions (reformation of the 'hukou' system²⁷) represents one of the largest movements of people in human

225 history (Fig. 1b), and is leading to the feminization of rural landscapes and forest-
management. The effects of these demographic shifts on forest dynamics, such as forest
resurgence on previously used agricultural lands, and the ways in which such
demographic shifts alter participation and voice in forest decision-making are not well
understood. Emerging research shows that people's movements may be linked to the
230 mobilization of new economic resources, knowledge, values, technologies and skills²⁶.
Changing demographic patterns influence not just the livelihoods of forest communities
but also macro-governance institutions that will shape future social and environmental
transformations of forested landscapes. For example, international migration is driving
reforestation in Nepal²⁸, changing community forest management institutions in
235 Mexico²⁹, and driving shifts from subsistence to commodity crop monocultures in
agricultural systems in the Philippines³⁰.

The socioeconomic and environmental effects of these demographic changes
predominantly manifest themselves at sub-national and local scales. However, the
drivers of rural demographic changes are complex and multi-scalar³¹, encompassing
240 local 'push' (e.g., poverty and insecure livelihood options driven by climate change)
and 'pull' factors (e.g., prospects of increased and more incomes) mediated by national-
and international-level processes, including the development of transportation
networks, and national and international labour markets and related institutions (e.g.,
recruitment agencies). New possibilities and risks for conservation, degradation, and
245 governance are emerging as a result of linkages and circular flows among people who
have left, those who have stayed, and those who have returned.

While rural populations globally are declining, urban populations are increasing
rapidly. The land sparing hypothesis asserts that intensification of production on
existing lands can allow for meeting increased demand from steep population growth
250 while generating opportunities for more effective forest conservation elsewhere in the
landscape³². Land sparing, should in theory facilitate new possibilities for forest
conservation, yet beyond the issue of the net demand for land, rural population shifts to
urban centres can be related to deforestation by creating increased urban demand that
has sometimes been met through new large industrial agricultural projects in
255 depopulated areas³³.

Trend 3: Rise of the middle-class in low and middle-income countries. The middle-
class in low- and middle-income countries is forecasted to grow to 4.9 billion people

by 2030, comprising over half of the projected global population³⁴ (Fig. 1c). This trend
260 generates a new source of demand for commodities with large forest footprints (e.g.,
meat and palm oil), as well as a new source of investment for agricultural land and
support for conservation. The growth in demand by this rapidly growing middle-class
will surpass previous global estimates, putting increasing pressure on land and other
resources³⁵. Growing demand for commodities has already prompted large-scale,
265 corporate-led land acquisitions for industrial production of cattle, soy, and palm oil in
Latin America, Africa, and Southeast Asia³⁶. Globally, 27% of all forest disturbance
between 2001 and 2015 was associated with commodity-driven deforestation³⁷. Further
growth in demand and an accompanying culture of consumerism will alter local and
global consumption patterns with potentially severe effects on deforestation rates,
270 emissions, wildlife populations, ecosystem services and rural communities. Large-scale
land acquisitions in Africa, Southeast Asia, and Latin America are also being driven by
urban elites with the financial and political capital to acquire and consolidate farms³⁸.
This trend is being accompanied by new countervailing interests in protecting nature
and forests as conservation values become more widespread and recognized³⁹.

275 The EAT-Lancet commission recently argued that food in the Anthropocene
represents one of the greatest health and environmental challenges of the 21st century³⁹.
Whereas we have seen reductions in hunger, improved life expectancy, falling infant
and child mortality rates in recent decades, and decreased global poverty, these health
benefits are now being offset by shifts to unhealthy diets that are high in calories and
280 heavily-processed foods. Rapid urbanization and increasing incomes (accompanied by
growing demands for processed foods and animal source foods) are partly driving these
shifts to unhealthy diets. The global transformation to healthy diets from sustainable
food systems suggested by the EAT-Lancet commission requires that the global
consumption of fruits, nuts, vegetables, and legumes will have to double⁴¹. Given that
285 these food groups often are low-yielding and include many food items that are
frequently sourced from the wild, it is critical to understand the role of forests and trees
in securing sufficient supply of these food groups. Indeed, forests and agriculture are
typically managed as separate sectors, although the contribution of forests to food and
agricultural production via environmental services at local and global scales should
290 receive greater recognition and policy support⁴¹. A deeper understanding of how forests
and agroforestry systems contribute to food and nutritional security – both in rural and

urban areas – is needed to inform policy debates on food and nutrition, and promote a more coordinated management across agricultural and forest sectors.

295 **Trend 4: Rise in the availability, accessibility, and use of digital technologies.**

Information and communications technologies (ICTs) including personal computers, tablets, cell-phones, web-tools, smart technologies, and social media platforms are likely to have transformational impacts on the forest sector in the coming decade. Global ICT access has grown exponentially: just between 2000 and 2016, internet use and mobile cellular subscriptions saw a sevenfold increase, with much of that growth occurring outside industrialized countries⁴² (Fig. 1d). ICTs that collect, compile and disseminate forest sector data are increasingly accurate, sophisticated and easy to use, and include land mapping, real-time satellite data and analyses, and large-scale, crowd-sourced data on land cover changes and forest conditions. To accommodate and attract new users, data providers like Global Forest Watch⁴³ are making data more accessible and easier to analyse. Similarly, monitoring platforms like “TRASE”⁴⁴ track increasingly detailed information about international commodity supply chains, including trading companies, to monitor national and corporate transparency commitments.

310 These changes can benefit a wide range of forest sector stakeholders: policy makers needing better evidence for decision-making; oversight bodies needing to monitor compliance; non-governmental actors seeking to monitor sustainable production chains of key commodities and products, and advocating for conservation and social equity; forest managers interested in improved productivity and marketing; and local communities and indigenous peoples interested in protecting their forests and livelihoods⁴⁵. Conversely, novel tools and technologies can also aid those involved in illicit activities linked to deforestation, including illegal logging, mining, and drug-trafficking to evade controls and detection⁴⁶.

ICTs are supporting the surveillance and certification of global production networks (e.g. palm oil), and this is increasing the regulatory control of forest-based products and of actors threatening forests. However, the “cleaning up” of supply chains and “zero deforestation targets” (i.e. producing and sourcing commodities that do not involve forest clearance), can concentrate corporate large-scale production on already deforested lands and lead to the displacement of smaller producers onto more marginal lands⁴⁷. Forced displacement of local communities can likewise fuel deforestation as

displaced communities are forced to seek other lands to sustain their livelihoods, and also exacerbate environmental conflicts as communities seek to maintain control over their small-holdings and/or communal forests⁴⁸⁷. It is also important to understand how attempts to reduce deforestation through supply chain governance might displace land-use pressure from humid tropical forests and peatlands into other ecosystems⁴⁹ (e.g., dry forests and savannahs).

Trend 5: Large-scale infrastructure development. To accommodate demand for energy, natural resources and transport, many countries are planning ambitious growth in these sectors and related infrastructures⁵⁰. Large-scale international infrastructure projects, such as the Chinese-led Belt and Road Initiative, are likely to have transformational impacts on forests and rural communities⁵¹. These projects are driven and made possible by national political and economic elites, the increased use of public-private financing mechanisms, international financial institutions, geopolitical interests, and the support of subnational elites⁵⁰. At least 25 million kilometres of new roads to facilitate the flow of commodities to and from transport hubs are anticipated globally by 2050 - equivalent to a 60% increase in the total length of roads compared to 2010⁵². Governments in the Amazon basin alone, are developing 246 new hydro-electric dams⁵³ (in comparison with the 191 in existence - Fig. 2). Approximately 48% of protected area downgrading, downsizing and degazettement (PADDD) events in the basin are linked to dams⁵⁴. Large-scale infrastructure is frequently the driver of other natural resource extraction drivers of forest loss⁵⁰. Illegal mining activities are also expanding rapidly, notably in remoter areas of South America, Africa and Indonesia⁵⁵. At least 106 probable incidences of PADDD (24% of recorded incidences) caused by mining just in the Amazon have been identified⁵⁴. This growth in infrastructure, hydroelectric power development and mining leads to forest loss, displaces forest-residing peoples, disrupts livelihoods, and provokes social conflicts as communities lose access to land and resources⁵⁶. For example, the Chacorão dam of the Tapajos hydroelectric complex in Brazil will flood over 18,000 ha of the indigenous territory of the Munduruku people who have contested this project⁵⁷. Infrastructure and resource extraction investments are also linked to systemic corruption that clouds transparency in natural resource governance⁵⁸, as in the ongoing Lava Jato corruption scandal that has shown the extent of paybacks and trading of favours linked to large-scale infrastructure and hydrocarbon investment across Latin America.

Expanding case study research. The five trends outlined above parallel a shift in the research agenda on social and environmental issues in tropical forests, which has departed from the notion of smallholders as principal agents of deforestation towards a focus on national development models, complex global production networks, and large-scale private investments. However, data collection efforts and analyses to assess forest-livelihood links and forest governance outcomes have typically focused on household- or community-level dynamics through case studies and collections of case studies^{9,59}. These efforts have helped spur theoretical advances and identified key drivers of livelihood changes, poverty, and their links to forest cover change in forest landscapes. Understanding how the five trends noted above affect forests and livelihoods will require expanding substantially on household- and community-level case studies (or collections of case studies) to understand externally-driven biophysical, economic and political processes, and their effects on local decision-making processes. Large sample size, country-level studies combining publicly available data sources - such as national census data - can provide additional insights to local case study analyses. For example, recent national-level studies leveraging multiple secondary data sets in Nepal demonstrate the mechanisms through which international migration drives reforestation in the country, and how poverty moderates the effectiveness of decentralised forest management in reducing deforestation^{28,60}. A similar analytical approach combines multiple data sources to understand how road networks, agriculture suitability, and poverty influence protected area effects on forests and livelihoods in Thailand and Costa Rica⁶¹. These national-level approaches complement local case-study based research by systematically testing for the role of biophysical and socioeconomic factors in shaping environmental and social outcomes of forest-related interventions in the context of large-scale demographic changes.

A greater emphasis on causality. Identifying and estimating causal relationships in forest landscapes is necessary for the development of a stronger evidence base that can better inform policy decisions, but remains a challenge⁶² for two key reasons. First, while qualitative assessments of forests and livelihoods provide strong causal insights on drivers of social and environmental change, they are unable to generate estimates that are comparable across space and over time. Second, many quantitative studies of

395 forests and livelihoods suffer from small sample sizes, often include too few predictor
variables to accurately describe the broader socioeconomic contexts being studied, or
to control for key factors that might themselves act as key drivers of forests and
livelihood changes, and tend to focus on single points in time⁶³. Small sample sizes and
400 model mis-specifications (often driven by data-limitations, particularly of
socioeconomic data that are collected less frequently than forest cover data, for
example) can lead to potential statistical bias and over-simplification of causal
pathways, including inattention to mechanisms that may act as precursors of factors
affecting forest-livelihood links⁶⁴ (e.g., migration patterns²⁸). Quantitative studies on
forests and forest livelihood have also tended to rely on reverse causal questions (or
causes of effects - “what factors cause forest-livelihood changes” as opposed to forward
405 causal questions or effects of causes - “what changes does X prompt in forests,
livelihoods and their relationships?”⁶⁵). Approaches determining causes of effects are
particularly well suited for hypothesis generation by identifying key relationships
between variables of interest. In contrast, approaches that determine effects of causes
are often better suited for hypothesis testing because they can provide more precise
410 estimates of specific factors being analysed. However, both methods run the risk of
corroborating theory if statistical models are poorly defined.

Generating more robust and comprehensive causal analyses will require: i) a
better balance between hypothesis generation and hypothesis testing - including a
stronger integration of research methods (e.g., between qualitative and quantitative
415 methods to generate mixed methodologies), and use of both classic qualitative studies
as well as emerging tools and approaches not widely used in the forest-linked
livelihoods field, including novel tools for systematic qualitative analyses⁶⁶, machine
learning⁶⁷, modelling approaches⁶⁸, and randomized control trials⁶⁹; ii) strengthening
existing data platforms (e.g., TRASE⁴⁴, the World Bank Microdata Library⁷⁰), and a
420 better integration of secondary socio-economic and biophysical datasets to assess joint
livelihood and forest outcomes (e.g. ref⁵⁹); iii) a more careful design of quantitative and
qualitative primary data collection efforts that can be combined with existing datasets;
and iv) closer partnerships among different stakeholders to ensure that research can be
co-produced and leveraged in advocacy strategies. Approaches that can leverage the
425 relative strengths of different datasets and methods are most likely to identify new and
better strategies of change for advocacy and policy interventions.

Deeper exploration of geographical and temporal scales. Although spatiotemporal scales are inherently integrated into multiple frameworks to address human-environment interactions, existing empirical approaches have not been consistent nor explicit in the incorporation of scale into forests and livelihoods research. For example, estimates of the economic contribution of forests to national GDP exist at the national administrative scale, but it is not clear how these national-level figures link to household-level estimates of forest benefits or forest contributions to local incomes and economies. And by contrast, although household-level surveys provide estimates of forest contributions to local livelihoods, it is generally not possible to relate these to national-level estimates of contributions to GDP⁷¹. As a consequence, tracking how different economic and ecological processes and factors, including the trends discussed here, affect forests and livelihoods across scales remains difficult. The combination of various secondary data sources, including national census data and representative household surveys - such as the World Bank's Living Standards Measurement Survey or USAID's Demographic Health Survey, with national-level datasets holds enormous promise for multi- and cross-scale empirical analyses. These data are collected regularly over time, and can be iteratively aggregated at different administrative units (e.g., from villages < municipalities < districts), and merged to cover spatial gaps and measure changes over time. The reconciliation of evidence across spatiotemporal scales does confront substantial challenges because different socioeconomic data collection efforts are often inconsistent in both space and time, with different waves of household data collections designed to be representative cross-sectional samples rather than panel datasets. Emerging technologies – such as machine learning and big data analytics – promise potential avenues to reconcile some of these spatial and temporal incongruencies⁷². Compilation efforts to combine disparate high-spatial resolution datasets will be particularly useful to understand the relative effects of factors and processes co-occurring in space and time - such as the five trends that we advance. Furthermore, they are also particularly useful to understand social and spatial heterogeneity of effects and outcome patterns, as also spillover effects of changing forest-livelihood relationships.

Concluding remarks. The five trends above emphasise the importance of novel actors (middle-class citizens, as well as emerging national elites, in low and middle-income countries); new technologies (ICT's and digital monitoring platforms); increasing

mobility patterns (changing gender relations and circular knowledge exchanges); and changing dynamics (forest mega-disturbances and accelerating infrastructure development). They also highlight key mechanisms through which these trends likely
465 affect forests and forest livelihoods (Fig. 3), including new conservation priorities, shifting agricultural and extractive frontiers, land abandonment and changing agricultural practices, and monitoring and evaluation tools.

Gaining a better understanding of how forests and forest livelihoods are being affected by the five trends we identify is critical for policy and advocacy at local,
470 national and international scales. Building on case-study research, placing greater emphasis on causality, and integrating different knowledges across geographical and temporal scales could provide a more detailed understanding of long-term social and environmental outcomes at multiple levels, and generate a more nuanced understanding of the complex forest-livelihood synergies and trade-offs in relation to multiple
475 Sustainable Development Goals. Building a research agenda with the potential for policy impact will require re-doubling efforts to strengthen multiple types of collaborations, including between social and natural scientists, between scientists and policy-makers, and partnerships that recognize the validity and legitimacy of both local and global knowledge, including decolonising methodologies and participatory
480 approaches that help counter pervasive western forest management models. Such changes in approach are vital if the research community is to find ways of working together with forest communities and their allies that adequately link specific placed-based outcomes to global trends.

Building such links might constitute a challenge given rising global
485 protectionist, nationalist and authoritarian trends, which are making it more difficult for civil society organizations to legally register, get work permits or access funding in places affected by rising competition over natural resources, like water, food, fuel and land. Where pressures on forests grow for reasons of food, energy, and minerals, community-based organizations and individuals protecting forests are also subject to
490 harassment, criminalization and, far too frequently, murder at the intellectual hands of national and subnational elites^{73,74}.

In the medium- to long-term future, the space for civil society organizations is likely to be increasingly contested. It is therefore essential that, in addition to their work with civil society organizations, the research community also consider engaging with
495 novel partners such as investigative journalists, anti-corruption commissions, rights-

based lawyers, civil engineering companies, ministries of roads, mines and energy, and financiers. Such interactions hold the potential to yield new insights, different modes of engaging policy and the public sphere, and novel conversations capable of offsetting and contesting trends that are closing civic spaces related to forest governance⁵⁶.

500 The five trends we highlight point to the importance of understanding how large-scale and potentially competing public and private demands on forest landscapes for commercial, development and conservation purposes (e.g., rapid expansion of hydroelectric power development and increasing forest restoration pledges) interact with local claims for land and resource rights. In this context, it is also paramount to
505 rethink how and with what tools (e.g., better digital forest monitoring platforms, hand-held devices, drones) and governance systems rural communities and civil society organisations can defend forests, local livelihoods and the increasingly contested economic, cultural and political spaces that forests represent⁷³. Future capacities to identify and prioritize critical leverage points hinge on better theories of human and
510 natural systems that can help identify the interventions necessary for sustainability transitions.

Corresponding Author. Correspondence should be sent to Johan A. Oldekop; **Email:** johan.oldekop@manchester.ac.uk; **Address:** Global Development Institute, The
515 University of Manchester, M13 9PL, UK. **Tel:** + 44 161 275 0967.

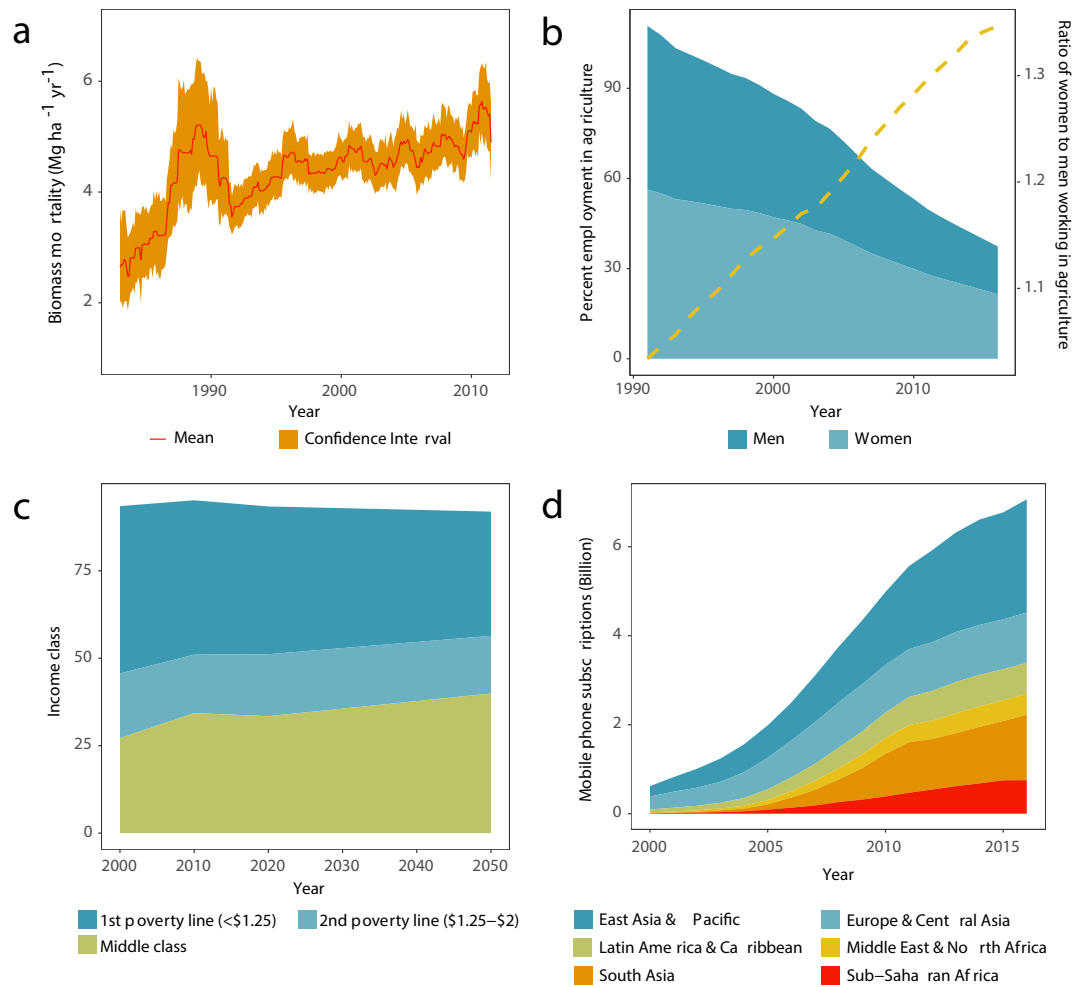
Acknowledgements. This work was funded by the UK's Department for International Development (grant number 203516-102) and governed by the University of Michigan's Institutional Review Board (HUM00092191). JAO acknowledges the
520 support of a European Union FP7 Marie Curie international outgoing fellowship (FORCONEPAL). LVR was funded by the European Research Council (ERC) under the European Union's Horizon 2020 Research and Innovation Programme (Grant agreement No. 853222 FORESTDJET). AJB acknowledges the support of an
525 Australian Research Council Australia Laureate Fellowship (grant number FL160100072). LBF acknowledges support from the European Union Marie Curie global fellowship (CONRICONF). PM was supported by the European Research Council (ERC) under the European Union's Horizon 2020 research and innovation program (Grant agreement No 677140 MIDLAND). This article contributes to the Global Land Programme (<https://glp.earth>). The authors would also like to thank DC

530 Miller and P Shyamsundar, and two anonymous reviewers for useful comments on a
previous version of this manuscript.

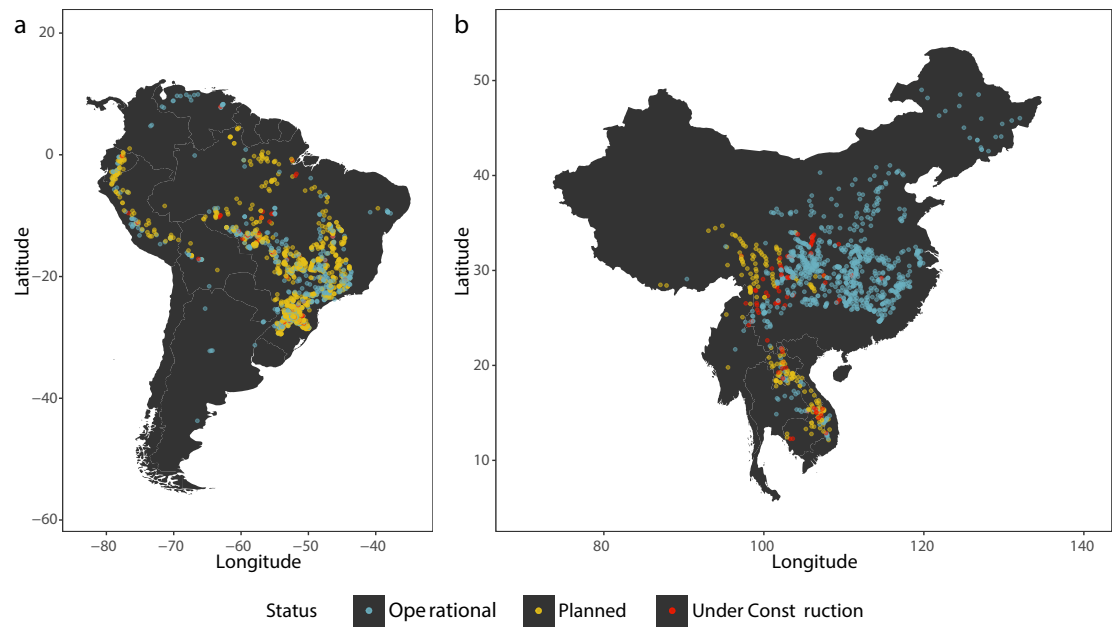
Author Contributions. JAO, LVR, AA, CW, and SJW designed the horizon scan and
convened the panel. JAO, LVR, AA, AJB, PM, DNB, AB, SB, IDH, PD, SCD, LBF,
535 TG, CK, KK, DM, THM, RN, MN, MAPV, JMR, WJS, CW and SJW took part in the
horizon scan. JAO and LVR drafted the initial manuscript with input from AA, AJB,
and PM, which was then finalized by DNB, AB, SB, IDH, PD, SCD, LBF, TG, CK,
KK, DM, THM, RN, MN, MAPV, JMR, WJS, CW and SJW.

540 **Competing Interests.** The authors declare no competing interests.

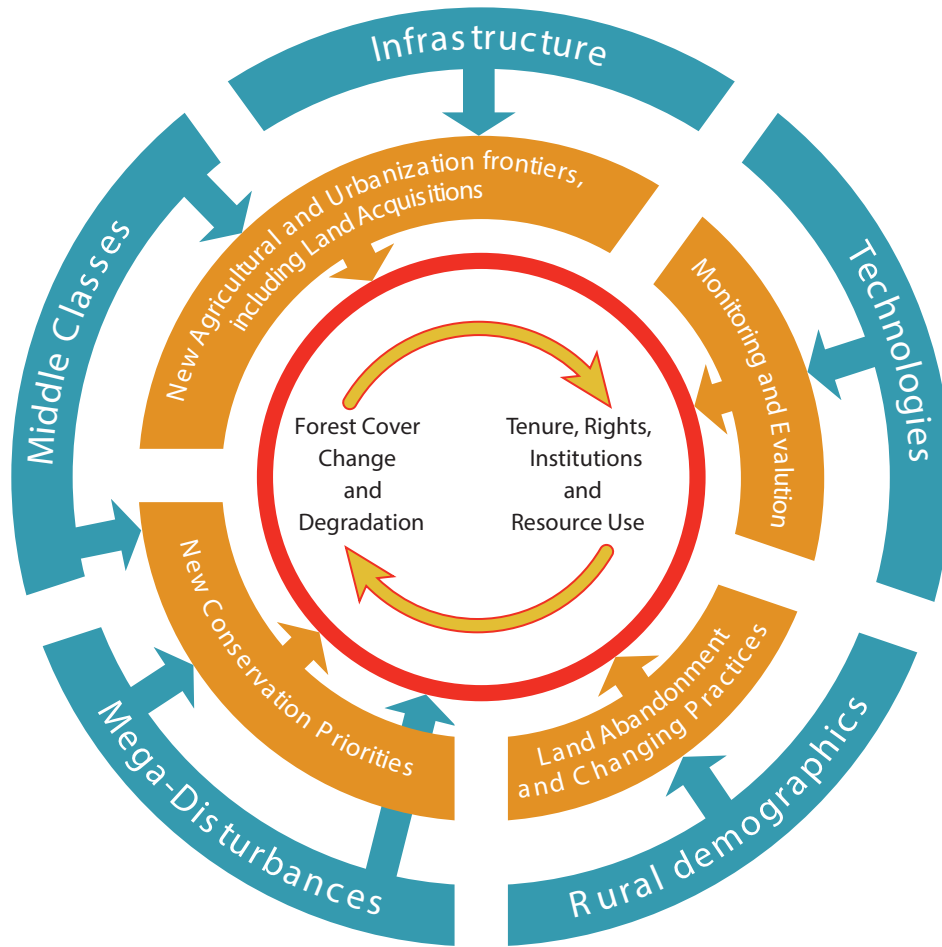
Figures and Legends.



545 **Figure 1 | Changes in key socioeconomic and biophysical trends.** a) increased biomass mortality in 321 forest plots in the Amazonian rainforest²⁰, b) changes in the proportion of men and women working in agriculture in China⁷⁵, c) rise of the middle class in Africa⁷⁶, and d) increases in global mobile phone subscriptions⁷⁵.



550 **Figure 2 | Dam construction in forest-rich regions.** a) South America, and b) China and Mainland Southeast Asia are two forest-rich regions where the majority of the world's hydropower infrastructure is currently being developed⁴³.



555 **Figure 3 | Forest-livelihood linkages in a Globalized world.** Five large-scale socioeconomic and biophysical trends (blue shapes) likely to influence forests and livelihoods (area inside the red circle) through a series of mechanisms (orange shapes).

560 **References:**

1. Timko, J. *et al.* A policy nexus approach to forests and the SDGs: tradeoffs and synergies. *Curr Opin Environ Sustain* **34**, 7-12 (2018)
- 565 2. Katila, P. *et al.* *Sustainable Development Goals: Their impacts on forests and people* (Cambridge University Press, 2019).
3. Grassi, G. *et al.* The key role of forests in meeting climate targets requires science for credible mitigation. *Nature Climate Change* **7**, 220-226 (2017).
- 570 4. Butchart, S. H. M. *et al.* Shortfalls and solutions for meeting national and global conservation area targets. *Con Lett* **8**, 329-337 (2015)
- 575 5. Convention on Biological Diversity. *Zero draft of the of post-2020 global biodiversity framework.* (2020)
6. Suding, K. *et al.* Committing to ecological restoration. *Science* **348**, 683-640 (2015).
- 580 7. Bastin, J. F. *et al.* The global tree restoration potential. *Science* **365**, 76-79 (2019).
8. Intergovernmental Panel on Climate Change. Climate Change and Land. *An IPCC Special Report on climate change, desertification, land degradation, sustainable land management, food security, and greenhouse gas fluxes in terrestrial ecosystems.*
- 585 Approved Draft (2019).
9. Miller, D. C., & Hajjar, R. Forests as pathways to prosperity: Empirical insights and conceptual advances. *World Development* (in press)
- 590 10. Liu, J. *et al.* Systems integration for global sustainability. *Science* **347**, 1258832 (2015).
11. Lenzen, M. *et al.* International trade drives biodiversity threats in developing nations. *Nature* **486**, 109-112 (2012).
- 595 12. Sheldon, T., & Sankaran, C. The impact of Indonesian forest fires on Singaporean pollution and health. *American Economic Review* **107**, 526-529.
13. Sutherland, W.J. Fleishman, E., Mascia, M.B., Pretty, P. & Rudd, M.A. Methods for collaboratively identifying research priorities and emerging issues in science and policy. *Methods in Ecology and Evolution* **2**, 238-247 (2011)
- 600 14. Cabinet Office. *Horizon Scanning Programme: a new approach for policy making.* (UK Government Office for Science, 2013).
- 605 15. Sutherland, W. J. *et al.* Ten years on. A review of the first global conservation horizon scan. *Trends in Ecology and Evolution* **34**, 139-153 (2019).

- 610 16. Bengston, D. N. *Horizon scanning for environmental foresight: a review of issues and approaches* GTR-NRS-121 (U.S.D.A. Forest Service, Northern Research Station, Newtown Square PA, 2013).
17. World Meteorological Organization. *Statement on the status of the global climate in 2018* (World Meteorological Organization, Geneva, 2018).
615
18. Millar, C. I., & Stephenson, N. L. Temperate forest health in an era of emerging megadisturbance. *Science* **349**, 823–826 (2015).
- 620 19. Hubbart, J. A., Guyette, R., Muzika, R. M. More than Drought: Precipitation Variance, Excessive Wetness, Pathogens and the Future of the Western Edge of the Eastern Deciduous Forest. *Science of the Total Environment* **566**, 463–467 (2016).
20. Brienen, R. J. W. et al. Long-term decline of the Amazon carbon sink. *Nature* **519**,
625 334-348 (2015)
21. Lawrence, D. & Vandecar, K. Effects of tropical deforestation on climate and agriculture. *Nature Climate Change* **5**, 27–36 (2015).
- 630 22. IPBES. *Summary for policymakers of the global assessment report on biodiversity and ecosystem services of the Intergovernmental Science-Policy Platform on Biodiversity and Ecosystem Services* (IPBES secretariat, Bonn, Germany, 2019).
23. Smith, A. M. S. et al. The Science of Firescapes: Achieving Fire-Resilient
635 Communities. *BioScience* **66**, 130–146 (2016).
24. Olivero, J., et al. Recent loss of closed forests is associated with Ebola virus disease outbreaks. *Scientific Reports* **7**, 142971 (2017).
- 640 25. De Pinto, A. et al. The role of crop production in the forest landscape restoration approach – assessing potential benefits of meeting the Bonn Challenge. *Front Sustain Food Syst* **4**: 61 (2020).
26. Hecht, S. et al. *People in motion, forests in transition: Trends in migration, urbanization, and remittances and their effects on tropical forests* (Center for
645 International Forestry Research (CIFOR), Bogor, Indonesia, 2015).
27. Knight, J., & Gunatilaka R. Great expectations? The subjective well-being of rural-urban migrants in China. *World Development* **38**, 113-124 (2010)
650
28. Oldekop, J. A., Sims K. R. E., Whittingham M. J., Agrawal A. An upside to globalization: International migration drives reforestation in Nepal. *Global Environmental Change* **52**, 66-74 (2018)
- 655 29. Robson J., Berkes, F. How does out-migration affect community institutions. A study of two indigenous municipalities in Oaxaca, Mexico. *Human Ecology* **39**, 179-190

- 660 30. Montefrio, M. J. F., Ortiga, Y. Y., Josol, M. R. C. B. Inducing development: Social remittances and the expansion of Oil Palm. *International Migration Review* **48**, 216-242 (2014).
- 665 31. Van Hear, N., Bakewell, O., Long, K. Push-pulls plus: reconsidering drivers of migration. *Journal of Ethnic and Migration Studies* **44**, 927-944 (2018).
32. Fischer, J. *et al.* Land sparing versus land sharing: Moving forward. *Conservation Letters* **7**, 149-157.
- 670 33. Davis K. F., *et al.* Tropical forest loss enhanced by large-scale land acquisitions. *Nature Geoscience*, in press (2020).
34. Pezzini, M. An emerging middle class. *OECD Observer* 1–2 (2012). Available at: http://oecdobserver.org/news/fullstory.php/aid/3681/An_emerging_middle_class.html (Accessed: 30 June 2020).
- 675 35. Alexander, P. *et al.* Drivers for global agricultural land use change: The nexus of diet, population, yield and bioenergy. *Global Environmental Change* **35**, 138–147 (2015).
- 680 36. Borras Jr, S. M., Hall, R., Scoones, I., White, B., Wolford, W. Towards and better understanding of global land grabbing: and editorial introduction. *Journal of Peasant Studies* **38**, 209-216 (2011).
- 685 38. Curtis, P. G., Slay, C. M., Harris, N. L., Tyukavina, A., Hansen, M. C. Classifying drivers of global forest loss. *Science* **361**, 1108-1111 (2018).
38. City slickers on the farm: Africa’s real land grab. *The Economist* 1–7 (2016).
- 690 39. Kremen, C., & Merenlender, A. M. Landscapes that work for biodiversity and people. *Science* **362**, eaau6020 (2018).
40. Willet, W. *et al.* Food in the Anthropocene: the EAT-Lancet Commission on healthy diets from sustainable food systems. *Lancet* **393**, 447-492 (2019).
- 695 41. Rowland, D., Ickowitz, A., Powell, B., Nasi, R., Sutherland, T. Forest foods and healthy diets: Quantifying the contributions. *Environmental Conservation* **44**, 102-114 (2017).
- 700 42. World Bank. *Digital Dividends*. 1–359 (World Bank, 2016).
43. Global Forest Watch (Available at: <https://www.globalforestwarch.org>)
- 705 44. Transparent Supply Chains for Sustainable Economies (TRASE - available <https://trase.earth>).
45. Castrén, T. & Pillai, M. *Information and Communication Technology for Forest Law Enforcement and Governance*. 1–92 (Program on Forests (PROFOR), 2015).

- 710 46. Wright, T. How many drones are smuggling drugs across the U.S. Southern
Border? *Air & Space Magazine* (2020). Available at:
<https://www.airspacemag.com/flight-today/narcodrones-180974934/>
- 715 47. Gardner, T. A., et al. Transparency and sustainability in global commodity supply
chains. *World Development* **121**, 163-177 (2019).
48. Agrawal, A., Brown, D. G., Sullivan, J. A. Are global land grabs ticking socio-
environmental bombs or just inefficient investments. *One Earth* **1**, 159-162 (2019).
- 720 49. le Polain de Waroux, Y. et al. The restructuring of South American soy and beef
production and trade under changing environmental regulations. *World Development*
121, 188-202 (2019)
- 725 50. Bebbington, A. J. et al. Resource extraction and infrastructure threaten forest
cover and community rights. *Proc. Natl. Acad. Sci. U.S.A* **115**, 13164-13173 (2018).
51. Coenen, J. *et al.* Environmental governance of China's Belt and Road Initiative.
Environmental Policy and Governance, in press (2020).
- 730 52. Laurance, W. F. *et al.* A global strategy for road building. *Nature* **513**, 1–6 (2014).
53. Lees, A. C., Peres, C. A., Fearnside, P. M., Schneider, M. & Zuanon, J. A. S.
Hydropower and the future of Amazonian biodiversity. *Biodiversity and Conservation*
25, 451–466 (2016).
- 735 54. Golden Kroner, R. E. *et al.* The uncertain future of protected lands and waters.
Science **364**, 881-886 (2019).
- 740 55. Asner, G. P., Llactayo, W., Tupayachi, R. & Luna, E. R. Elevated rates of gold
mining in the Amazon revealed through high-resolution monitoring. *Proc. Natl. Acad.
Sci. U.S.A.* **110**, 18454–18459 (2013).
56. Bebbington, A.J. et al. Priorities for governing large-scale infrastructure in the
tropics. *Proc. Natl. Acad. Sci. U.S.A.* **117**, 21829-21833 (2020).
- 745 57. Walker, R., Simmons, C. Endangered Amazon: An indigenous tribe fights back
against hydropower development in the Tapajós valley. *Environment: Science and
policy for Sustainable Development* **60**, 4-15 (2018).
- 750 58. Kolstad, I. & Søreide, T. Corruption in natural resource management: Implications
for policy makers. *Resources Policy* **34**, 214–226 (2009).
59. Cheng, S. H. *et al.* A systematic map of evidence on the contribution of forests to
poverty alleviation. *Environmental Evidence* **8**: 3
- 755 60. Oldekop, J. A. *et al.* Reductions in poverty and deforestation from decentralized
forest management in Nepal. *Nature Sustainability* **2**, 421-428 (2019).

- 760 61. Ferraro, P. J., Hanauer, M. M., Sims, K. R. E. Conditions associated with protected area success in conservation and poverty reduction. *Proc. Natl. Acad. Sci. U.S.A.* **108**, 13913-13918 (2011).
- 765 62. Ferraro, P. J., Sanchirico, J. N., Smith, M. D. Causal inference in coupled human and natural systems. *Proc. Natl. Acad. Sci. U.S.A.* **116**, 5311-5318 (2019).
63. Miller, D. C., Mansourian, S., Wildburger, C. (eds.) *Forests, Trees and the Eradication of Poverty: Potential and Limitations. A Global Assessment Report* (IUFRO World Series Volume 39, Vienna, 2020).
- 770 64. Sloan, S. The development-driven forest transition and its utility for REDD+. *Ecological Economics* **116**, 1-11 (2015).
- 775 65. Gelman, A., Imbens, A. Why ask why? Forward causal inference and reverse causal questions. National Bureau of Economic Research Working Paper 19614 (2013).
- 780 66. Noyes, J. *et al.* Qualitative evidence. In *Cochrane Handbook for Systematic Reviews of Interventions* (eds. Higgins, J. P. T., Thomas, J., Chandler, J., Cumpston, M., Li, T., Page, M. J., Welch, V. A.) 525 – 545 (Wiley & Sons, Ltd., 2019).
67. Rana, P., Miller, D. C. Machine learning to analyze the social-ecological impacts of natural resource policy: insights from community forest management in the Indian Himalaya. *Environmental Research Letters* **14**: 024008 (2019).
- 785 68. Ferraro, P. J. *et al.* Estimating the impacts of conservation on ecosystem services and poverty by integrating modeling and evaluation. *Proc. Natl. Acad. Sci. U.S.A.* **112**, 7420-7425 (2015).
- 790 69. Jayachandran, S. *et al.* Cash for carbon: a randomized trial of payment for ecosystem services to reduce deforestation. *Science* **357**, 267-273 (2017).
70. World Bank Microdata Library (available at <https://microdata.worldbank.org/index.php/home>)
- 795 71. Shepherd, G., Kazoora, C., Mueller, D. Forest livelihoods and poverty alleviation: the case of Uganda. Food and Agriculture Organization of the United Nations. Forestry Policy and Institutions Working Paper 32 (2013).
- 800 72. Jean, N. *et al.* Combining satellite imagery and machine learning to predict poverty. *Science* **353**, 790-794 (2016).
73. Butt, N., Lambrick, F., Menton, M., Renwick, A. The supply chain of violence. *Nature Sustainability* **2**, 742-747 (2019).
- 805 74. Toumbourou, T., Muhdar, M., Werner, T., Bebbington, A.J. Political ecologies of the post-mining landscape: Activism, resistance, and legal struggles over Kalimantan's coal mines. *Energy Research and Social Science* **65** 101476

- 810 75. World Bank. Open Data (2019). Available at: <https://data.worldbank.org>
(Accessed: October 25th, 2019).
76. African Development Bank. Africa in 50 Year's Time. Tunis, Tunisia (September 2011).