

Winter 12-1-2016

Data Profiles-Rhode Island-Woonsocket

John C. Brown
Clark University

Richard A. Ramsawak
Clark University

James R. Gomes
Clark University

Recommended Citation

Brown, John C.; Ramsawak, Richard A.; and Gomes, James R., "Data Profiles-Rhode Island-Woonsocket" (2016). *Mosakowski Institute for Public Enterprise*. 82.
<https://commons.clarku.edu/mosakowskiinstitute/82>

This Article is brought to you for free and open access by the Academic Departments, Centers & Programs at Clark Digital Commons. It has been accepted for inclusion in Mosakowski Institute for Public Enterprise by an authorized administrator of Clark Digital Commons. For more information, please contact mkrikonis@clarku.edu, jodolan@clarku.edu.

Data Profiles-Rhode Island-Woonsocket

Abstract

We continue support the Federal Bank of Boston “Working Cities” challenge which aims to support social and economic recovery of underperforming small and mid-sized cities in the New England region. We continue to extend our data profiles of these cities located in Massachusetts, Rhode Island and now Connecticut. It is our hope that these data ‘rich” profiles which includes key indicators on health, population and demographic changes, industrial growth, and educational performance can not only support policy development in these targeted areas, but also help in monitoring the progress these cities make over time.

Keywords

Working Cities, Mosakowski Institute, Clark University, Data Profiles, Rhode Island, Woonsocket

Follow this and additional works at: <https://commons.clarku.edu/mosakowskiinstitute>

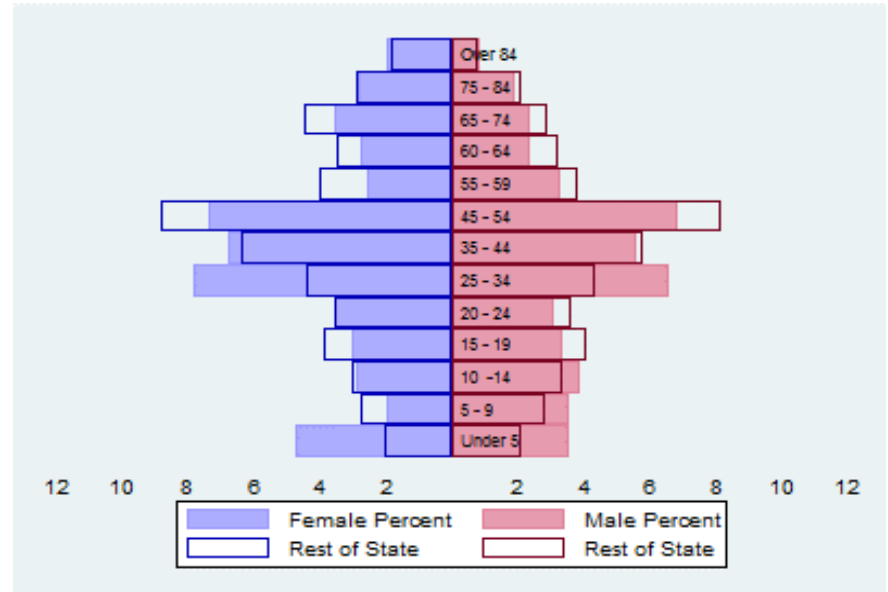


Part of the [Economic Policy Commons](#), [Education Policy Commons](#), [Geographic Information Sciences Commons](#), [Growth and Development Commons](#), [Health Economics Commons](#), [Health Policy Commons](#), [Human Geography Commons](#), [Public Affairs Commons](#), [Public Economics Commons](#), [Public Policy Commons](#), [Social Policy Commons](#), [Social Statistics Commons](#), [Social Welfare Commons](#), [Social Work Commons](#), [Sociology Commons](#), [Urban Studies Commons](#), and the [Urban Studies and Planning Commons](#)

The Population City Population 1970 to 2014



Population Distribution by Age Group



Population Distribution by Race and Ethnicity

percentage of the total	2000	2013	Cities 2013	2013
White	79.8	72.1	73.7	75.7
Black	3.9	5.6	5.0	5.3
Asian	4.0	5.7	3.2	3.0
Foreign-Born	7.5	10.8	13.9	13.1
Hispanic	9.3	14.0	15.1	12.9
Origin as percent of Hispanic				
Central America	2.1	4.0	14.6	17.3
Dominican Republic	8.5	2.5	9.4	17.1
Mexico	4.2	3.4	2.6	2.6
Puerto Rico	69.4	31.6	10.3	9.8

Recent Demographic Behavior

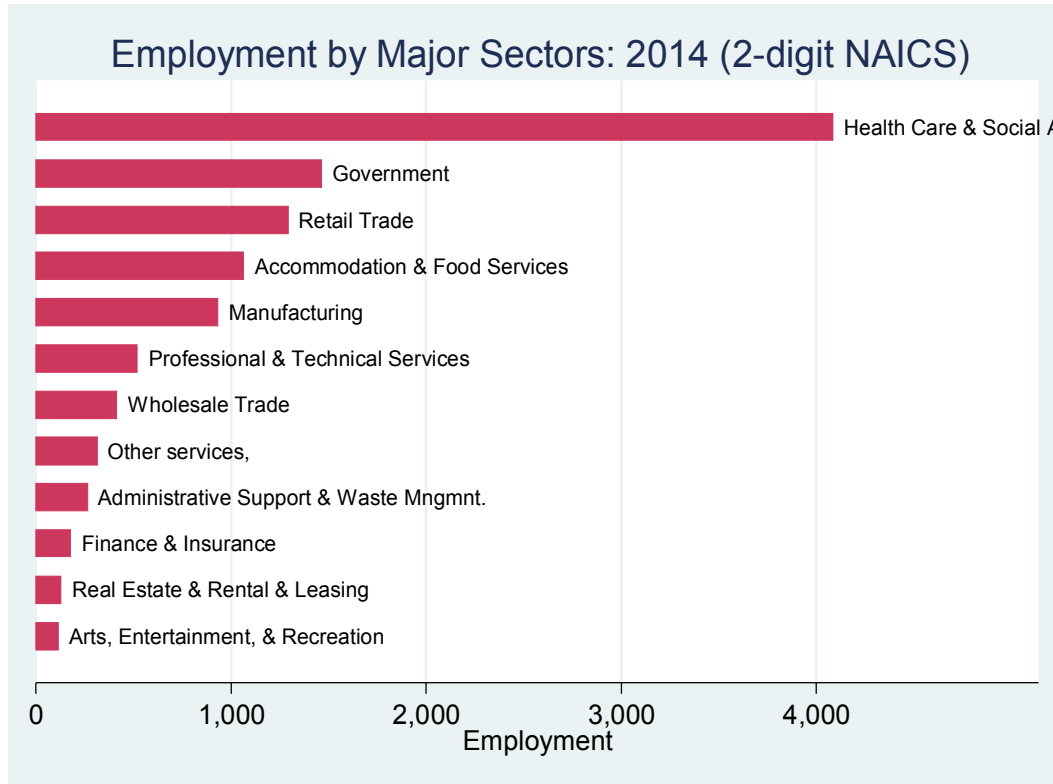
Indicator	Woonsocket	Working Cities	State
Birth Rate (per 1,000 females 15-44)	70.9	57.8	59.6
Low birthweight (<2.5 kg. % of births)	10.5	8.6	7.9
Births to teen mothers (15-19 years)†	14.4	10.9	9.0
Birth rate of teen mothers‡	7.1	3.7	2.9
Infant mortality (per 1,000 live births)	8.8	6.1	6.4
Mortality rate (per 100,000 residents)	1100.0	938.0	950.0

†As percent of all births

‡Per 1,000 females aged 15-19 years

The Local Economy

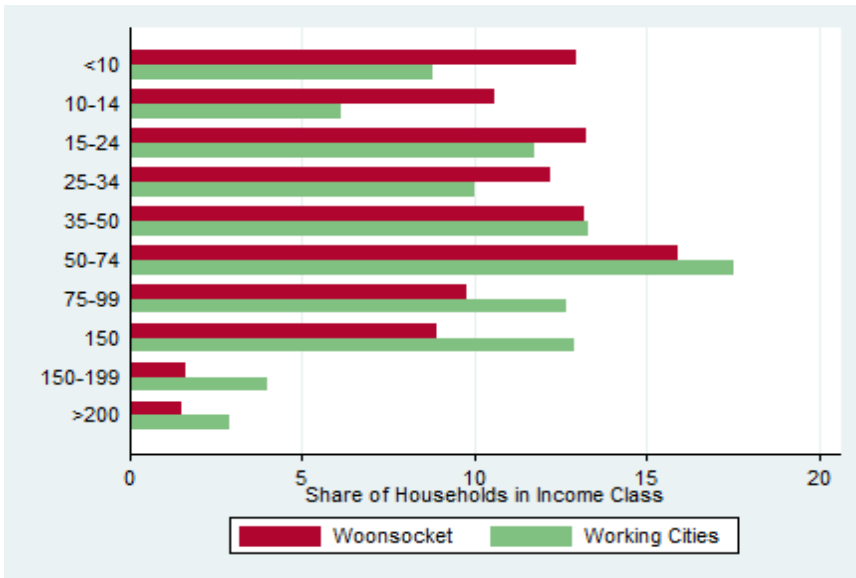
Employment by Major Sectors: 2012 (2-digit NAICS)



The Five Largest Industries: 2012 (4-digit NAICS Industries)

Description	NAICS	Employees
Nursing Facilities	6231	1000-2499
Restaurants	7225	500-999
General medical and surgical hospitals	6221	500-999
Warehousing and storage	4931	500-999
Mental health, and substance abuse facilities	6231	500-999

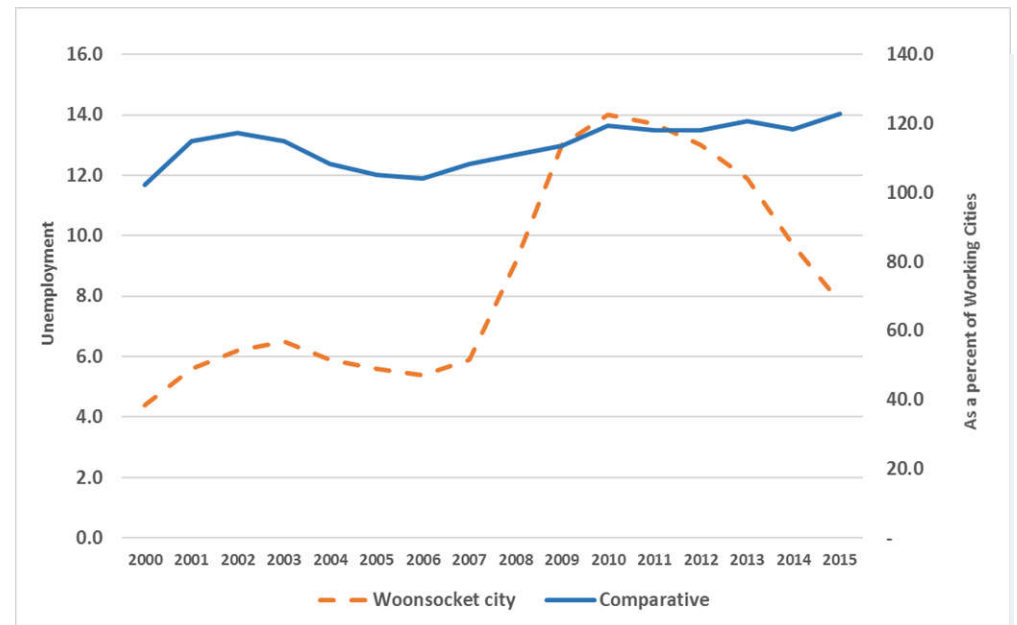
Distribution of Households by Income Class (in \$1,000)



Key Indicators of Income and Commuting

Indicator	Woonsocket	Working Cities
Median Family Income (\$)	36,058	50,837
Families below Poverty Line (%)	22.6	12.3
Children < 18 below Poverty Line (%)	37.0	19.3
Families with Food Assistance (%)	26.5	17.1
Commute with Public Transit (%)	1.2	2.6

Unemployment Rate: 2000-2015

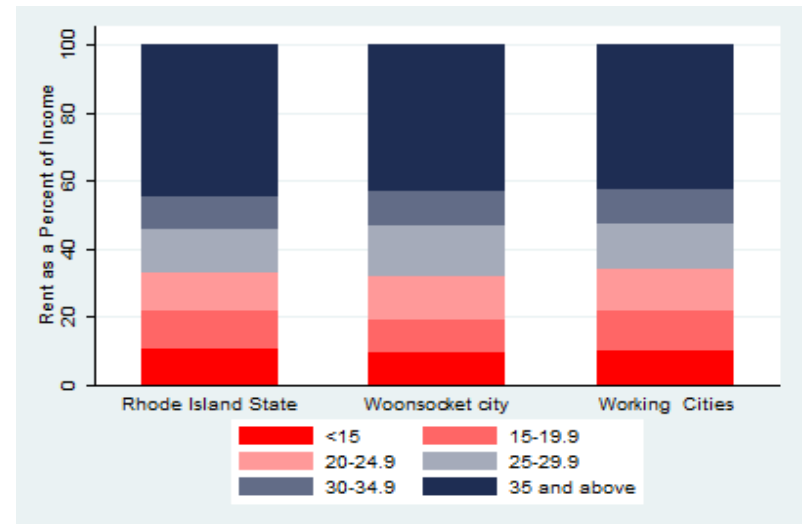


Housing

Housing Market Indicators in 2013

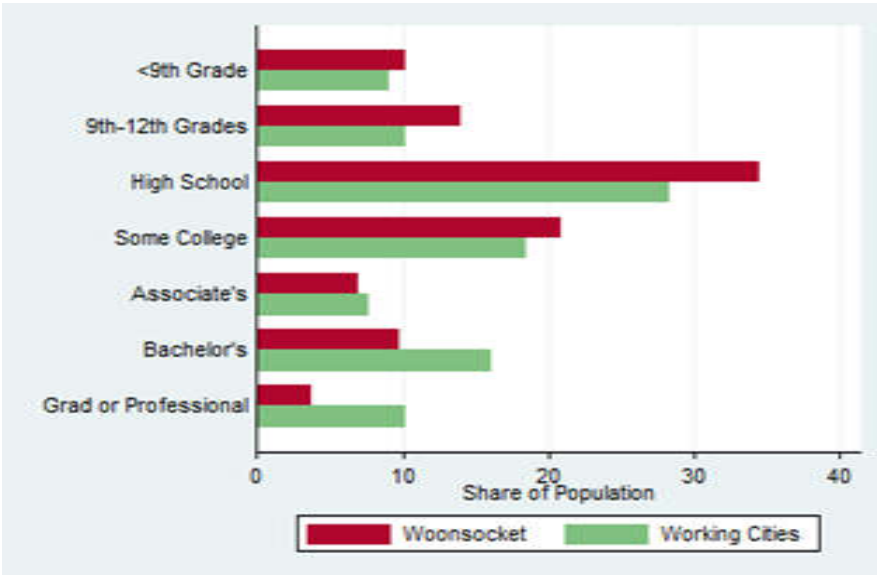
Indicator	Woonsocket	Working Cities	State
Share owner-occupied	40.5	54.7	61.2
Median Home Value	181,900	226,192	247,400
Average Size of Owner-Occupied Households	2.6	2.6	2.6
Average Size of Tenant Households	2.3	2.2	2.2

Housing Affordability



Education

Educational Attainment of the Population Aged 25 and Older



Mortality and Health

	Woonsocket Working Cities	
Lung Cancer Deaths (per 100,000)	67.5	60.8
Cardiovascular Disease Deaths (per 100,000)	372.6	270.1
HIV/AIDS Prevalence Rate (per 100,000)	240.5	238.5
Opioids Overdose Deaths (per 100,000)	29.0	23.3
Admissions to DPH Substance Abuse Programs (per 100,000)	7176.6	6771.4
Hospital Discharges for Asthma (per 100,000)	217.8	159.9

Civic Engagement

Voting Behaviour in 2014

	Woonsocket city	Working Cities
Registered Voters as a percent of registered Voters	84.5	85.6
Voters in 2014 election as perceent of registered voters	28.7	65.2
Voters in 2014 electionas percent of population aged 18 and above	24.3	55.8

Not-for-Profit Sector

Indicator (in \$ per capita)	Woonsocket	Working Cities	State
Assets of Education, Finance and Medical Non-Profits	1,970.47	11,450.84	16,053.18
Assets of Other Non-Profits	3,461.63	10,384.89	45,501.65
Revenue of Education, Finance and Medical Non-Profits	4,042.60	4,966.32	6,117.99
Revenue of Other Non-Profits	2,057.61	4,067.27	25,333.23

Other Non-Profits

Name	Revenues	Assets	Area
CVS FOUNDATION	0.1	50.5	Philanthropy
THE WOONSOCKET NEIGHBORHOOD DEVELOPMENT CORPORATION	2.6	30.3	Housing
BALLOU HOME FOR THE AGED OF WOONSOCKET RHODE ISLAND	4.2	9.0	Human Services
SEVEN HILLS FOUNDATION GROUP INC	23.3	8.6	Human Services
COMMUNITY CARE ALLIANCE	19.2	8.3	Mental Health
FAMILY RESOURCES COMMUNITY ACTION	7.8	3.7	Human Services
YWCA OF RHODE ISLAND	1.6	3.7	Human Services
BOUCHER APARTMENTS INC	1.1	3.5	Housing
STADIUM THEATRE FOUNDATION	1.5	3.0	Arts&Culture
WOON HEADSTART & DAY CARE CENTER	3.1	3.0	Human Services
UNION SAINT JEAN BAPTISTE SAINT JEAN BAPTISTE EDUCATIONAL FOUNDATI	0.1	1.8	Philanthropy
BLACKSTONE RIVER VALLEY NATIONAL HERITAGE CORRIDOR INC	1.1	1.5	Arts&Culture
CVS HEALTH CHARITY CLASSIC INC	2.0	1.5	Philanthropy
WOONSOCKET FIREMENS RELIEF ASSOCIATION THE	0.1	1.4	Public Safety
AMERICAN FRENCH GENEALOGICAL SOCIETY	0.0	1.1	Arts&Culture
RUSSO STREET APARTMENTS INC	0.1	0.9	Housing
BOYS AND GIRLS CLUB OF WOONSOCKET	0.6	0.8	Youth Development
BENEVOLENT & PROTECTIVE ORDER OF ELKS OF THE USA	0.3	0.8	Membership Benefit
INTERNATIONAL ASSOCIATION OF FIRE FIGHTERS	0.2	0.7	Public Safety
HOUSING PARTNERS FOR POSITIVE LIVING INC	0.1	0.6	Housing
ITALIAN WORKINGMENS CLUB CORP	0.2	0.6	Sports
TYRA CLUB	0.1	0.6	Sports