

Winter 12-1-2016

Data Profiles-Rhode Island-Pawtucket

John C. Brown
Clark University

Richard A. Ramsawak
Clark University

James R. Gomes
Clark University

Recommended Citation

Brown, John C.; Ramsawak, Richard A.; and Gomes, James R., "Data Profiles-Rhode Island-Pawtucket" (2016). *Mosakowski Institute for Public Enterprise*. 77.
<https://commons.clarku.edu/mosakowskiinstitute/77>

This Article is brought to you for free and open access by the Academic Departments, Centers & Programs at Clark Digital Commons. It has been accepted for inclusion in Mosakowski Institute for Public Enterprise by an authorized administrator of Clark Digital Commons. For more information, please contact mkrikonis@clarku.edu, jodolan@clarku.edu.

Data Profiles-Rhode Island-Pawtucket

Abstract

We continue support the Federal Bank of Boston “Working Cities” challenge which aims to support social and economic recovery of underperforming small and mid-sized cities in the New England region. We continue to extend our data profiles of these cities located in Massachusetts, Rhode Island and now Connecticut. It is our hope that these data ‘rich” profiles which includes key indicators on health, population and demographic changes, industrial growth, and educational performance can not only support policy development in these targeted areas, but also help in monitoring the progress these cities make over time.

Keywords

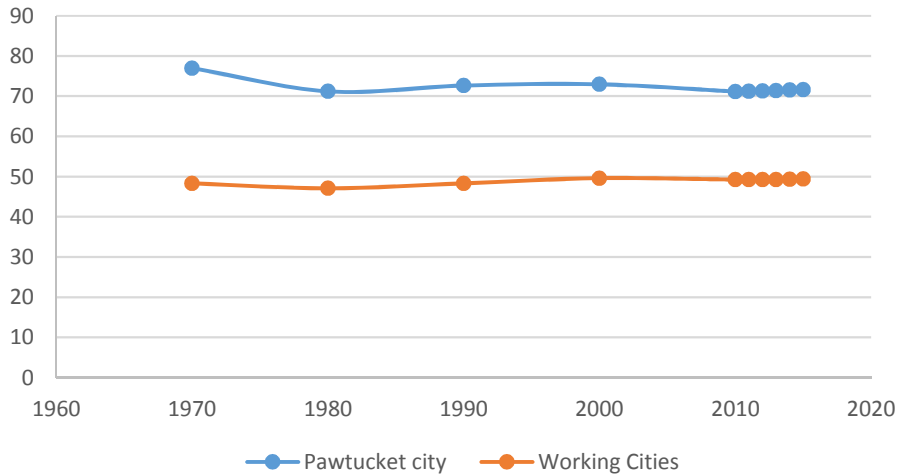
Working Cities, Mosakowski Institute, Clark University, Data Profiles, Rhode Island, Pawtucket

Follow this and additional works at: <https://commons.clarku.edu/mosakowskiinstitute>



Part of the [Economic Policy Commons](#), [Education Policy Commons](#), [Growth and Development Commons](#), [Health Economics Commons](#), [Health Policy Commons](#), [Human Geography Commons](#), [Public Affairs Commons](#), [Public Economics Commons](#), [Public Policy Commons](#), [Social Policy Commons](#), [Social Statistics Commons](#), [Urban Studies Commons](#), and the [Urban Studies and Planning Commons](#)

The Population City Population 1970 to 2014



Population Distribution by Age Group



Population Distribution by Race and Ethnicity

percentage of the total	2000	2013	Cities 2013	2013
White	69.1	36.7	73.7	75.7
Black	6.7	13.1	5.0	5.3
Asian	0.8	6.6	3.2	3.0
Foreign-Born	23.4	29.8	13.9	13.1
Hispanic	13.9	39.8	15.1	12.9
Origin as percent of Hispanic				
Central America	7.4	12.1	14.6	17.3
Dominican Republic	7.9	7.6	9.4	17.1
Mexico	5.7	2.0	2.6	2.6
Puerto Rico	32.5	12.7	10.3	9.8

Recent Demographic Behavior

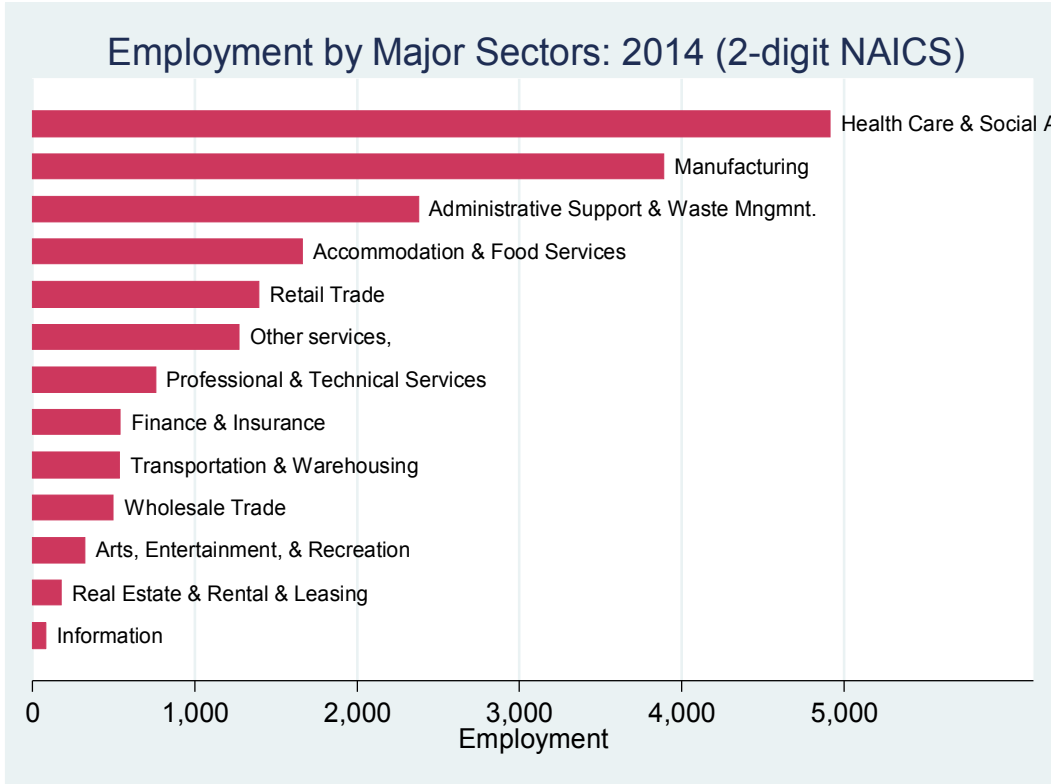
Indicator	Pawtucket	Working Cities	State
Birth Rate (per 1,000 females 15-44)	74.9	57.8	59.6
Low birthweight (<2.5 kg. % of births)	8.1	8.6	7.9
Births to teen mothers (15-19 years)†	11.5	10.9	9.0
Birth rate of teen mothers‡	7.5	3.7	2.9
Infant mortality (per 1,000 live births)	7.4	6.1	6.4
Mortality rate (per 100,000 residents)	920.0	938.0	950.0

†As percent of all births

‡Per 1,000 females aged 15-19 years

The Local Economy

Employment by Major Sectors: 2012 (2-digit NAICS)



The Five Largest Industries: 2012 (4-digit NAICS Industries)

Description	NAICS	Employees
General medical and surgical hospitals	6221	1000-2499
Restaurants	7225	1000-2499
Mental health and substance abuse facilities	6232	500-999
Services to buildings and dwellings	5617	500-999
Employment services	5613	500-999

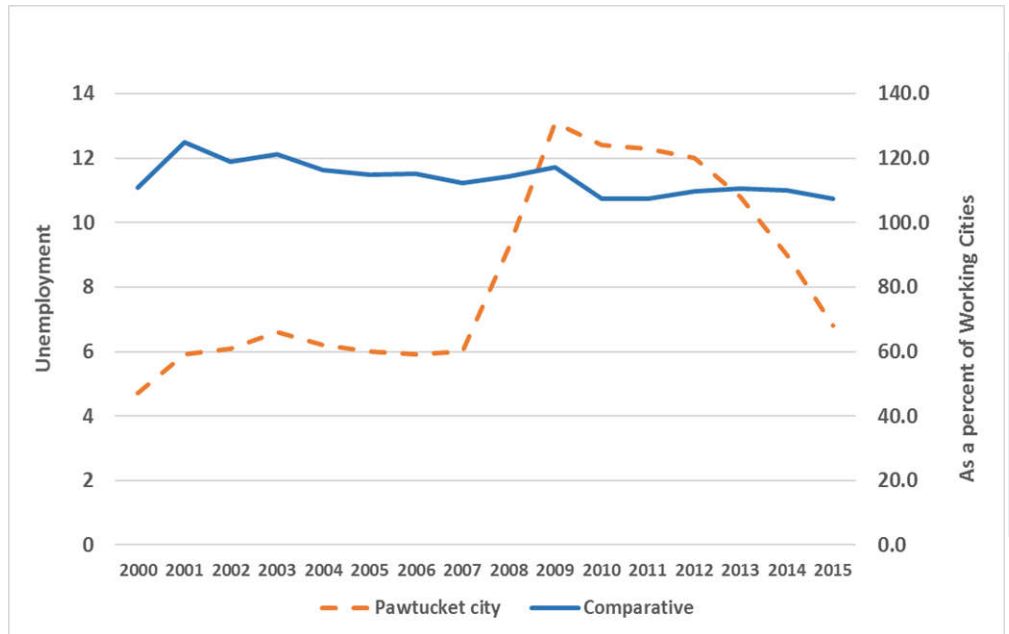
Distribution of Households by Income Class (in \$1,000)



Key Indicators of Income and Commuting

Indicator	Pawtucket	Working Cities
Median Family Income (\$)	40,379	50,837
Families below Poverty Line (%)	16.2	12.3
Children < 18 below Poverty Line (%)	25.8	19.3
Families with Food Assistance (%)	24.1	17.1
Commute with Public Transit (%)	4.1	2.6

Unemployment Rate: 2000-2015

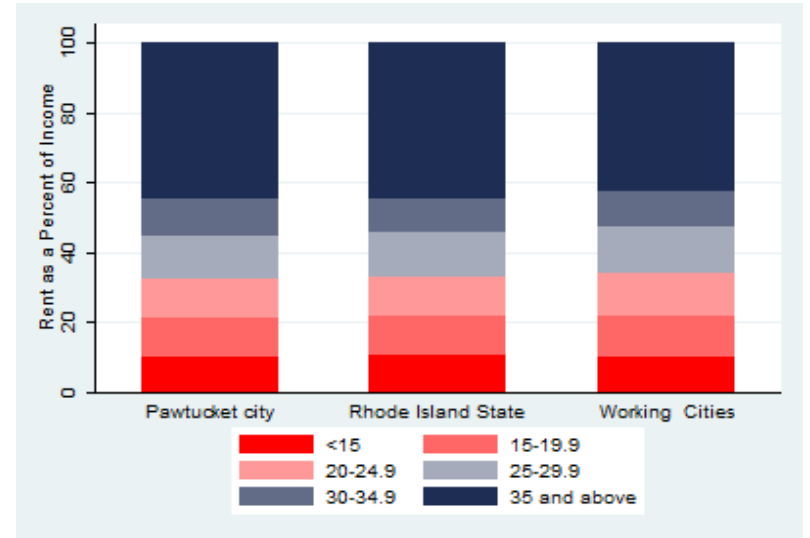


Housing

Housing Market Indicators in 2013

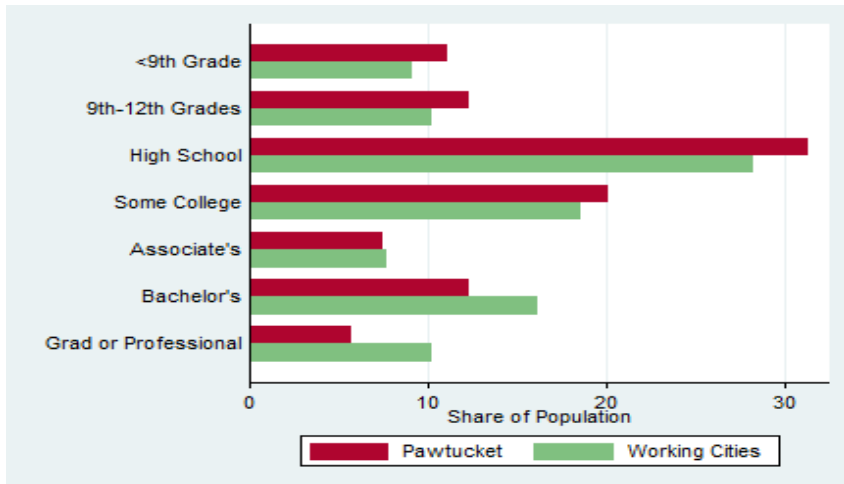
Indicator	Pawtucket	Working Cities	State
Share owner-occupied	45.0	54.7	61.2
Median Home Value	185,700	226,192	247,400
Average Size of Owner-Occupied Households	2.8	2.6	2.6
Average Size of Tenant Households	2.3	2.2	2.2

Housing Affordability



Education

Educational Attainment of the Population Aged 25 and Older



Mortality and Health

	Pawtucket	Working Cities
Lung Cancer Deaths (per 100,000)	55.9	60.8
Cardiovascular Disease Deaths (per 100,000)	222.3	270.1
HIV/AIDS Prevalence Rate (per 100,000)	354.2	238.5
Opioids Overdose Deaths (per 100,000)	25.2	23.3
Admissions to DPH Substance Abuse Programs (per 100,000)	7213.5	6771.4
Hospital Discharges for Asthma (per 100,000)	160.8	159.9

2014

Civic Engagement

Voting Behaviour in 2014

	Pawtucket city	Working Cities
Registered Voters as a percent of registered Voters	78.5	85.6
Voters in 2014 election as percent of registered voters	97.4	65.2
Voters in 2014 election as percent of population aged 18 and above	76.4	55.8

Not-for-Profit Sector

Indicator (in \$ per capita)	Pawtucket	Working Cities	State
Assets of Education, Finance and Medical Non-Profits	22,799.01	11,450.84	16,053.18
Assets of Other Non-Profits	2,867.36	10,384.89	45,501.65
Revenue of Education, Finance and Medical Non-Profits	3,259.00	4,966.32	6,117.99
Revenue of Other Non-Profits	1,552.57	4,067.27	25,333.23

Other Non-Profits

Name	Revenues	Assets	Area
PAWTUCKET CREDIT UNION	60.7	1556.6	Public Benefit
YOUNG MENS CHRISTIAN ASSOCIATION OF PAWT RI	10.5	32.8	Human Services
GATEWAY HEALTHCARE INC	10.3	18.0	Mental Health
BOYS & GIRLS CLUB OF PAWTUCKET	3.2	18.0	Youth Development
PAWTUCKET CITIZENS DEVELOPMENT CORPORATION	1.4	11.3	Housing
INDEPENDENCE SQUARE FOUNDATION	1.6	10.4	Foreign Affairs
THE NORMAN AND ROSALIE FAIN FAMILY FOUNDATION	2.6	9.8	Philanthropy
PUBLIC ARCHAEOLOGY LABORATORY INC	6.2	9.2	Science and Technology
JEANNE JUGAN RESIDENCE OF THE LITTLE SISTERS OF THE POOR INC	5.4	6.5	Human Services
OCEAN STATE CHARITIES TRUST	0.6	6.2	Philanthropy
HASBRO CHILDRENS FUND INC	0.3	4.7	Philanthropy
LUKE CHARITABLE FOUNDATION	0.2	4.2	Philanthropy
SWAN POINT ROAD AND RIVERSIDE	0.2	3.9	Membership Benefit
HUMAN SERVICES REALTY INC	1.2	3.8	Community Improvement
THE ARC OF BLACKSTONE VALLEY	11.1	3.6	Human Services
OLD SLATER MILL ASSOCIATION	1.0	3.4	Arts&Culture
INDEPENDENT LIVING AUTHORITY PROV	4.1	3.3	Housing
BLACKSTONE VALLEY COMMUNITY ACTION PROGRAM INC	7.3	2.4	Community Improvement
BELMONT COMMONS INC	0.0	2.3	Housing
ELMHURST HOUSE INC	0.4	2.1	Housing
BAYBERRY COURTS INC	0.1	1.9	Crime & Law
WESTERLY COURTS INC	0.1	1.8	Human Services