

2016

Data Profiles - Worcester

Mosakowski Institute
Clark University

John C. Brown
Clark University

Joe Krahe
Clark University

Sarah Philbrick
Clark University

Recommended Citation

Mosakowski Institute; Brown, John C.; Krahe, Joe; and Philbrick, Sarah, "Data Profiles - Worcester" (2016). *Mosakowski Institute for Public Enterprise*. 38.

<https://commons.clarku.edu/mosakowskiinstitute/38>

This Article is brought to you for free and open access by the Academic Departments, Centers & Programs at Clark Digital Commons. It has been accepted for inclusion in Mosakowski Institute for Public Enterprise by an authorized administrator of Clark Digital Commons. For more information, please contact mkrikonis@clarku.edu, jodolan@clarku.edu.

Data Profiles - Worcester

Keywords

data profiles, worcester, gateway cities, working cities

2016

Data Profiles - Worcester

Mosakowski Institute
Clark University

John C. Brown
Clark University

Joe Krahe
Clark University

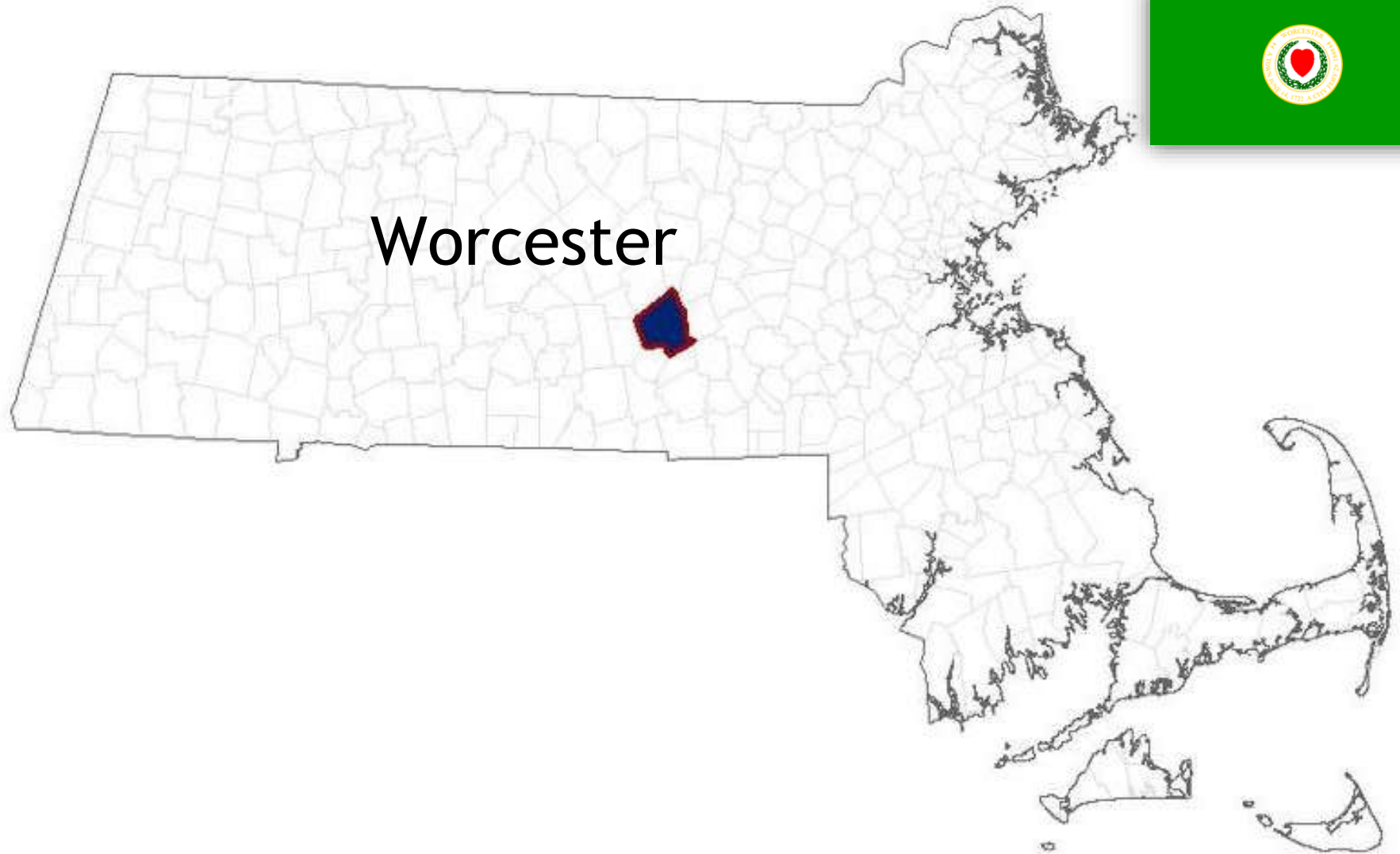
Sarah Philbrick
Clark University

Follow this and additional works at: <http://commons.clarku.edu/mosakowskiinstitute>

Recommended Citation

Mosakowski Institute; Brown, John C.; Krahe, Joe; and Philbrick, Sarah, "Data Profiles - Worcester" (2016). *Mosakowski Institute for Public Enterprise*. Paper 38.
<http://commons.clarku.edu/mosakowskiinstitute/38>

This Article is brought to you for free and open access by the Academic Departments, Centers & Programs at Clark Digital Commons. It has been accepted for inclusion in Mosakowski Institute for Public Enterprise by an authorized administrator of Clark Digital Commons. For more information, please contact celwell@clarku.edu.

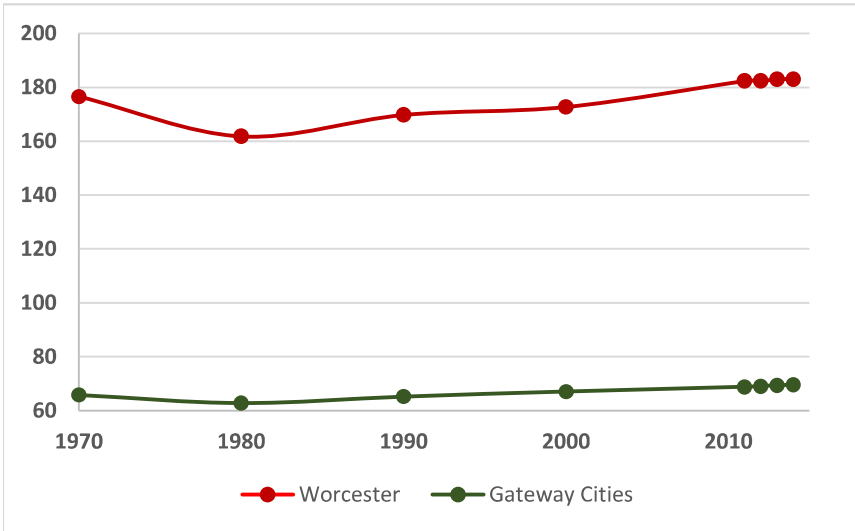


Worcester

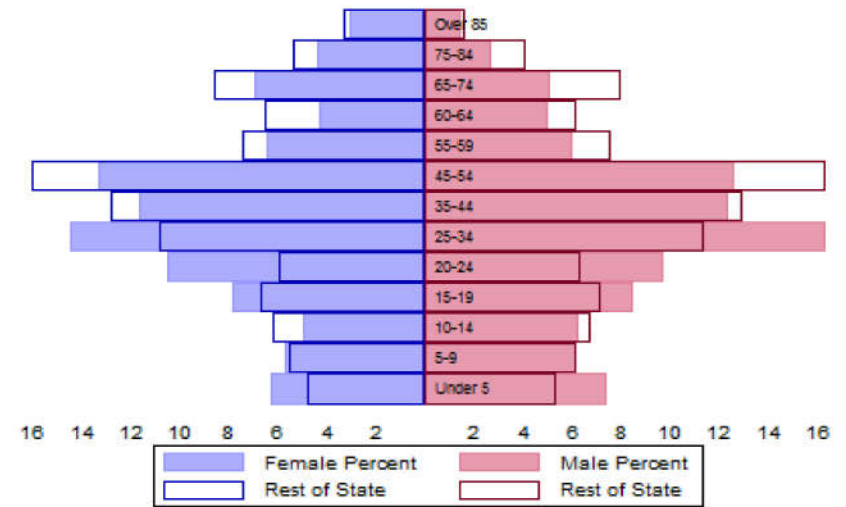


The Population

City Population 1970 to 2014



Population Distribution by Age Group



Population Distribution by Race and Ethnicity

Subgroups of the population as a percent of the total	2000	2013	Gateway Cities 2013	State 2013
White	77.1	73.7	73.8	89.0
Black	6.9	12.4	8.0	2.8
Asian	4.9	6.1	5.3	4.8
Foreign-born	14.5	20.9	19.9	12.1
Hispanic	15.1	20.9	19.6	4.3
Origin as percent of Hispanic				
Central America	5.4	10.0	15.8	20.3
Dominican Republic	6.2	11.2	14.4	17.9
Mexico	2.7	3.6	5.5	11.4
Puerto Rico	65.3	61.0	45.5	33.6

Recent Demographic Behavior

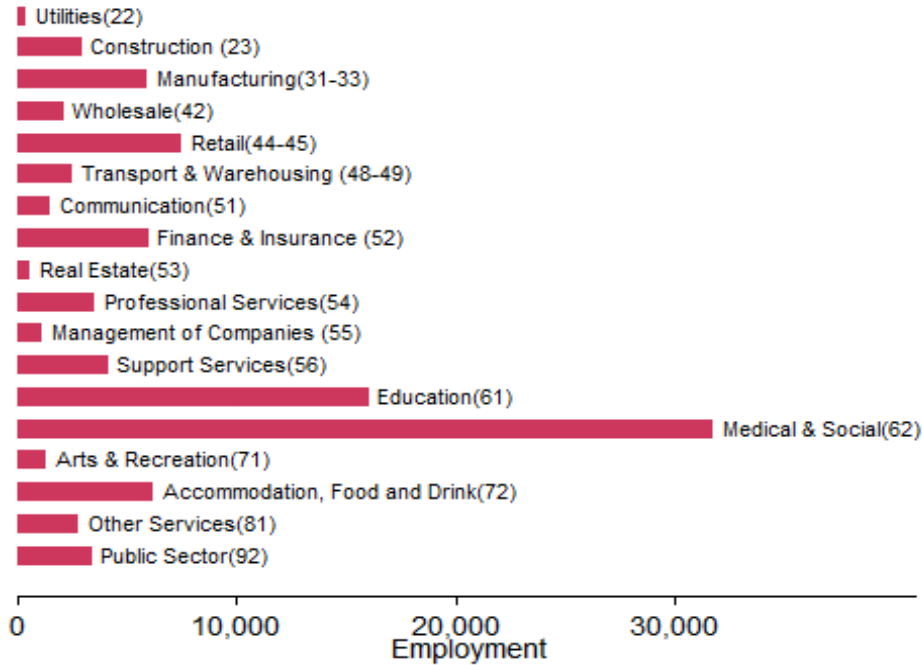
Indicator	Worcester	Gateway Cities	State
Birth Rate (per 1,000 females 15-44)	59.0	62.1	52.8
Low birthweight (<2.5 kg. % of births)	8.0	8.0	7.7
Births to teen mothers (15-19 years)†	7.2	6.0	3.8
Birth rate of teen mothers‡	23.3	22.3	12.0
Infant mortality (per 1,000 live births)	5.7	4.9	4.4
Mortality rate (per 100,000 residents)	862	844.9	800.0

†As percent of all births

‡Per 1,000 females aged 15-19 years

The Local Economy

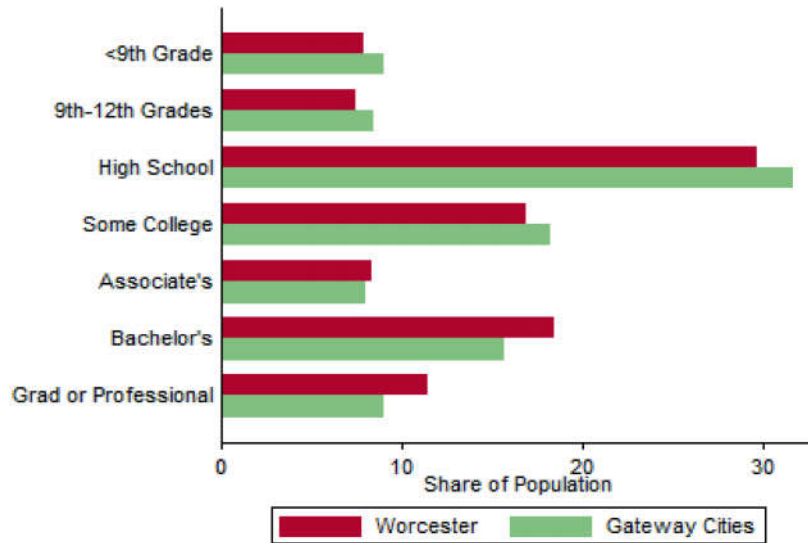
Employment by Major Sectors: 2012 (2-digit NAICS)



The Five Largest Industries: 2012 (4-digit NAICS industries)

Description	NAICS	Employment
General Hospitals	6221	> 10,000
Restaurants	7225	2500-4999
Skilled Nursing Facilities	6231	2500-4999
Physicians Offices	6211	2500-4999
Employment Services	5613	1000-2499

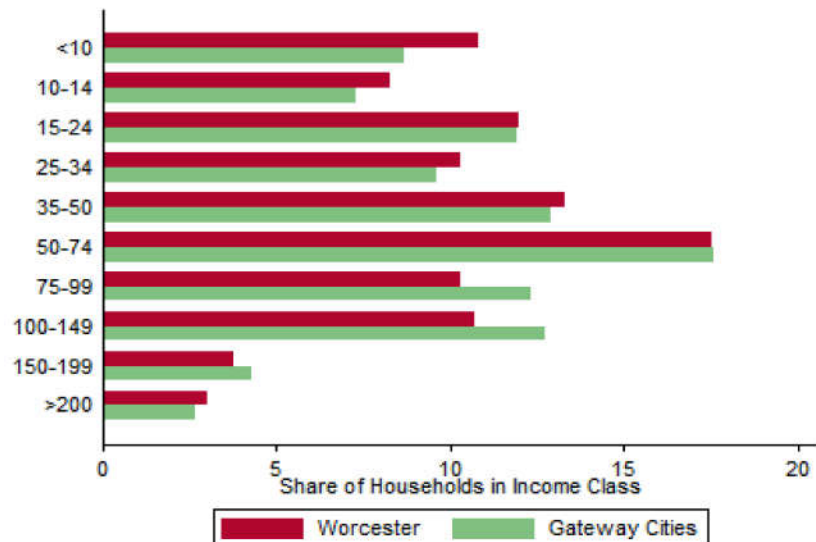
Educational Attainment of the Population Aged 25 and Older



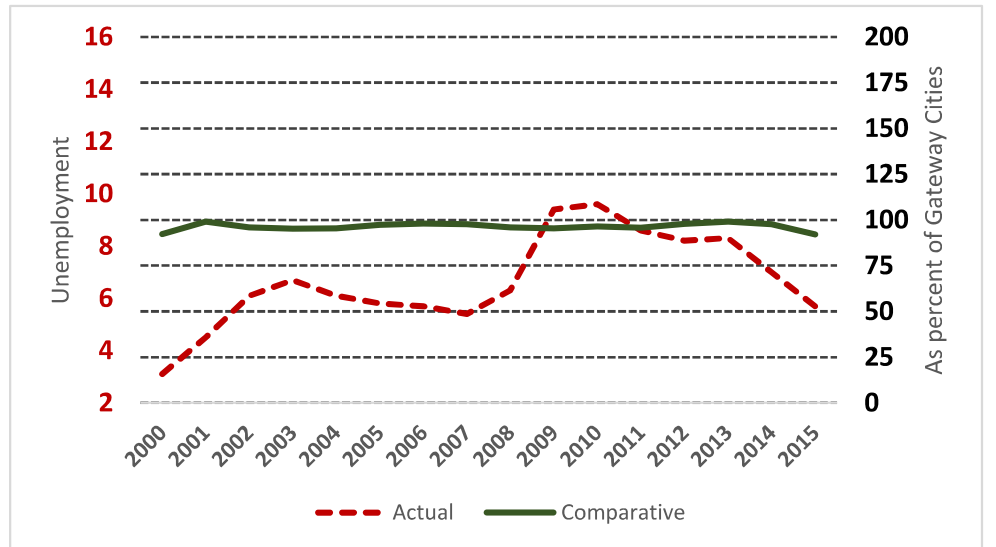
Key Indicators of Income and Commuting

Indicator	Worcester	Gateway Cities
Median Family Income (\$)	44,553	60,087
Families below Poverty Line (%)	18.6	14.3
Children < 18 below Poverty Line (%)	33.9	25.5
Families with Food Assistance (%)	23	20.8
Mean Travel Time to Work (Mins.)	23.3	26.4
Commute with Public Transit (%)	3.3	8.6

Distribution of Households by Income Class (in \$1,000)



Unemployment Rate: 2000-2015



Housing

Housing Market Indicators in 2013

Indicator	Worcester	Gateway Cities	State
Share owner-occupied	0.43	0.50	0.62
Median Home Value	205,300	252,085	325,800
Average Rent for Studio	603	735	746
Average Rent for One-Bedroom	669	786	765
Average Rent for Two-Bedroom	983	1097	926
Average Rent for Three-Bedroom	885	1182	863
Average Size of Owner-Occupied Households	2.42	2.68	2.25
Average Size of Tenant Households	2.64	2.38	2.70

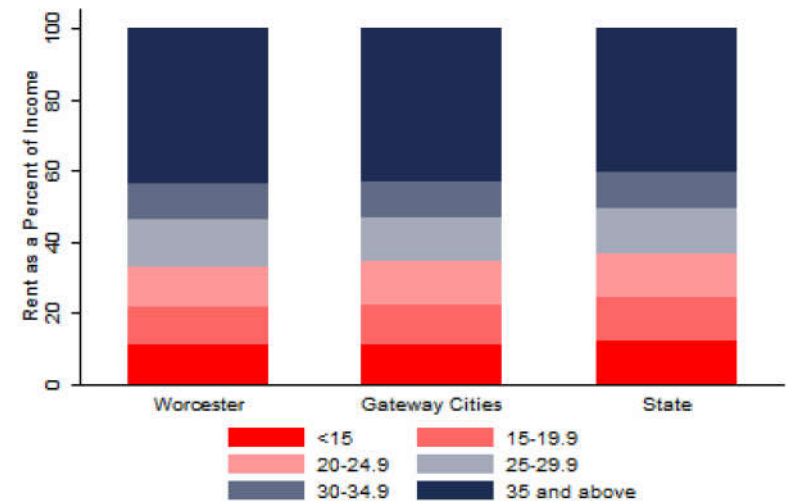
Education

Indicators for 2014

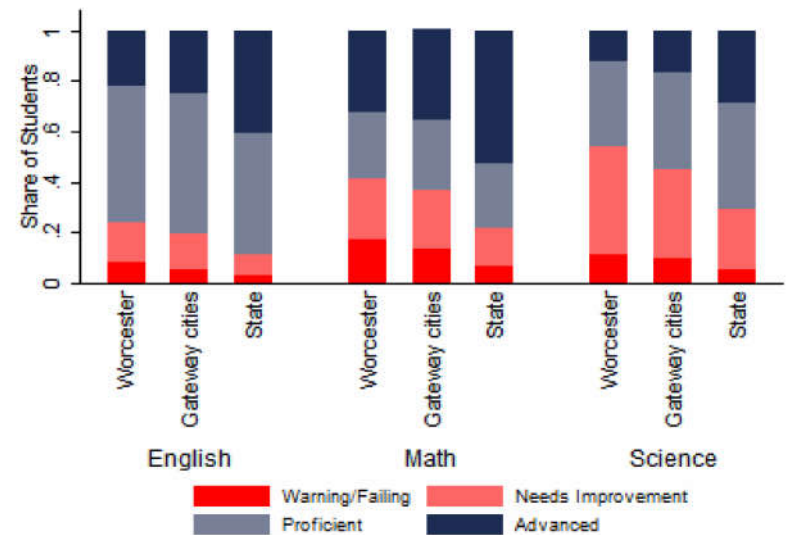
Indicator	Worcester	Gateway Cities	State
Average class size	16.6	18.3	18.1
Percent Proficient or Advanced (English 10th)	77.0	80.3	90.0
Percent Proficient or Advanced (Math 10th)	59.0	63.4	79.0
Student Growth Percentile English (10th)	47.0	43.7	51.0
Student Growth Percentile Math (10th)	49.0	43.4	50.0
Graduates attending college or university†	67.0	69.7	76.6
Male Dropout Rate	6.7	11.8	6.7
Female Dropout Rate	6.8	7.9	4.4
English Language Learners Dropout Rate	10.2	16.8	14.9
Low Income Dropout Rate	10.2	11.8	10.2

†Percent of 2013 class

Housing Affordability



10th Grade MCAS Scores in 2014



Mortality and Health

	Worcester	Gateway Cities	State
Lung Cancer Deaths (per 100,000 people) †	56.7	61.3	54.1
Cardiovascular Disease Deaths (per 100,000) †	223.0	254.7	237.4
Opioid Overdose Deaths (per 100,000)‡	22.9	25.5	13.0
HIV/Aids Prevalence Rate (per 100,000 people) 2010†	501.6	317.0	282.3
Admissions to DPH Substance Abuse Programs (per 100,000 people) ‡	2695	2189	1568
Hospital Discharges for Asthma (per 100,000) 2009	240.6	208.8	162.0
Percent overweight or obese children in grade 10 ‡	41.7	38.2	32.3
Percent of population on some form of non-private insurance 2013	36.6	36.1	17.2

†2010

‡2014

Civic Engagement

Voting Behavior in 2014

Indicator	Worcester	Gateway Cities	State
Registered voters as percent of population aged 18 and above	76.2	75.1	76.0
Voters in 2014 election as percent of registered voters	35.9	43.5	72.7
Voters in 2014 election as percent of population aged 18 and above	27.4	32.8	55.2

Not-for-Profit Sector

Indicator (in \$ per capita)	Worcester	Gateway Cities	State
Assets of Education, Finance, and Medical Non-Profits	28,895	10,152	27,527
Assets of Other Non-Profits	15,736	5,530	18,501
Revenue of Education, Finance, and Medical Non-Profits	29,224	4,361	10,472
Revenue of Other Non-Profits	5,538	3,050	10,589

Major Nonprofits in Education, Finance and Health Services (in \$millions)

Name	Revenues	Assets	Area
Umass Memorial Health Care Inc	2613.77	2152.71	Healthcare
Fallon Community Health Plan Inc	1199.86	433.90	Healthcare
Reliant Medical Group Inc	429.06	116.79	Healthcare
Worcester Polytechnic Institute	263.98	818.58	Education
Trustees of the College of the Holy Cross	213.15	918.10	Education
Umass Memorial Health Care Inc	209.95	235.89	Healthcare
Clark University	162.92	596.24	Education
Assumption College	107.53	210.15	Education
Becker College	55.37	40.24	Education
Visiting Nurse Assn Care Network Inc	51.29	18.13	Healthcare

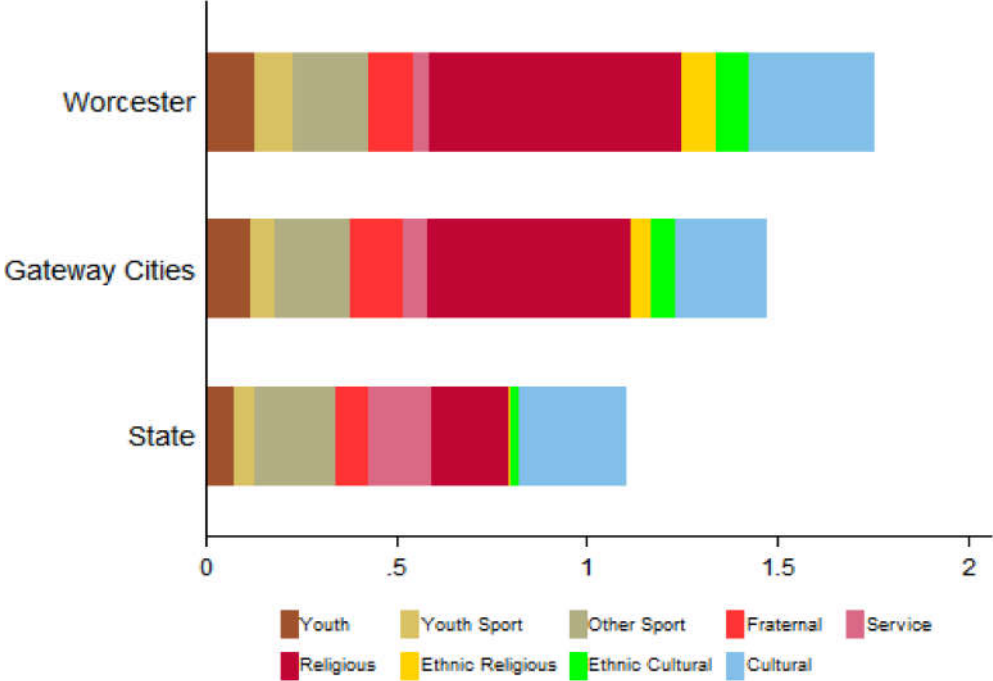
Other Nonprofits (in \$millions)

Name	Revenues	Assets	Area
Seven Hills Foundation Inc	157.41	158.72	Human Services
Spectrum Health Systems Inc	51.46	31.97	Mental Health
Youth Opportunities Upheld Inc	34.77	14.86	Human Services
Ascentria Community Services Inc	29.77	6.24	Human Services
Bridge of Central Massachusetts Inc	26.15	12.19	Human Services
Worcester Community Action Council Inc	19.94	3.04	Community Improvement
Massachusetts Society for the Prevention of Cruelty to Children	19.38	26.65	Human Services
Ascentria Care Alliance Inc	19.34	24.46	Human Services
YMCA of Worcester	18.26	44.50	Human Services
Visting Nurse Assn Care Hospice Inc	14.75	21.87	Human Services
Salem Community Corp	14.66	45.38	Human Services
Guild of St Agnes of Worcester Inc	14.03	8.82	Education

Nonprofits with a strong associative component

Associative Nonprofits

Number of Organizations per 1,000 residents



Worcester