

2016

Data Profiles - Westfield

Mosakowski Institute
Clark University

John C. Brown
Clark University

Joe Krahe
Clark University

Sarah Philbrick
Clark University

Recommended Citation

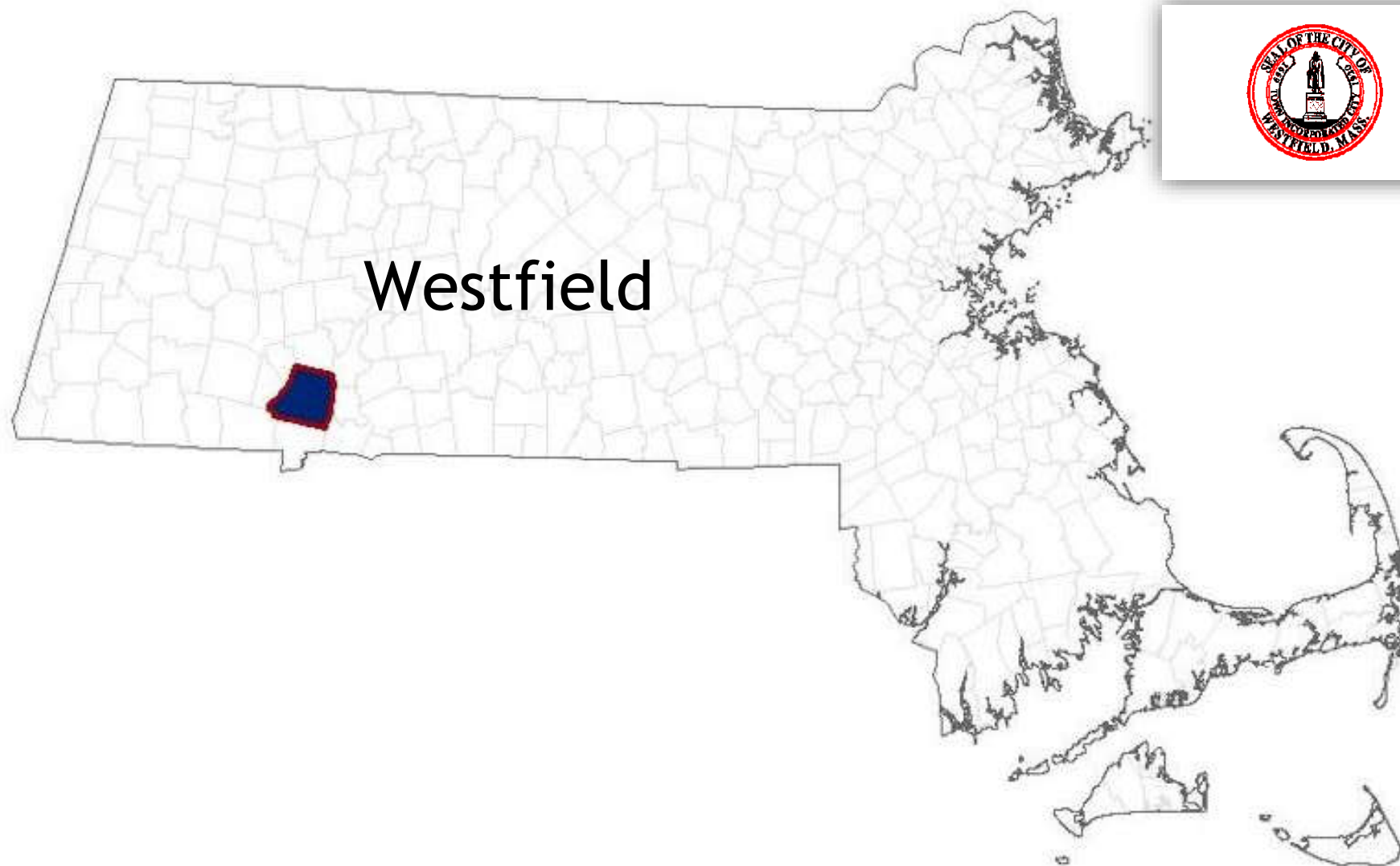
Mosakowski Institute; Brown, John C.; Krahe, Joe; and Philbrick, Sarah, "Data Profiles - Westfield" (2016). *Mosakowski Institute for Public Enterprise*. 39.
<https://commons.clarku.edu/mosakowskiinstitute/39>

This Article is brought to you for free and open access by the Academic Departments, Centers & Programs at Clark Digital Commons. It has been accepted for inclusion in Mosakowski Institute for Public Enterprise by an authorized administrator of Clark Digital Commons. For more information, please contact mkrikonis@clarku.edu, jodolan@clarku.edu.

Data Profiles - Westfield

Keywords

data profiles, westfield, gateway cities, working cities

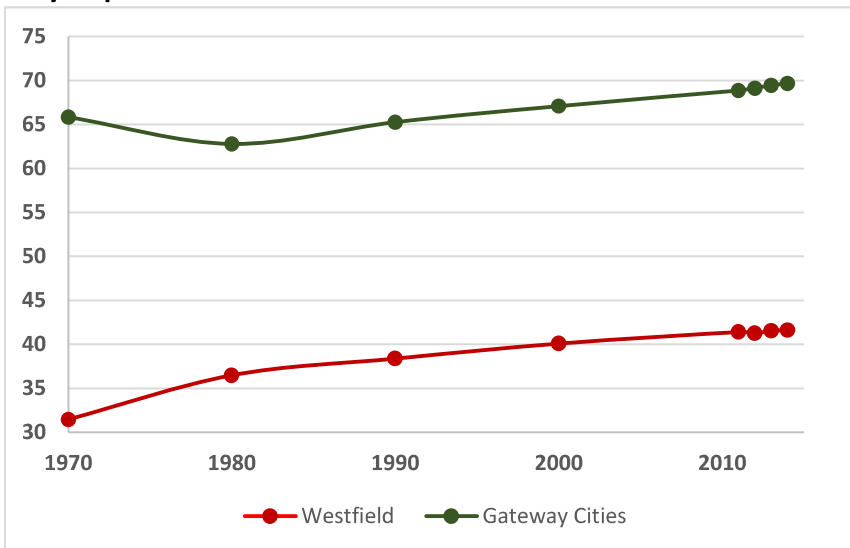


Westfield

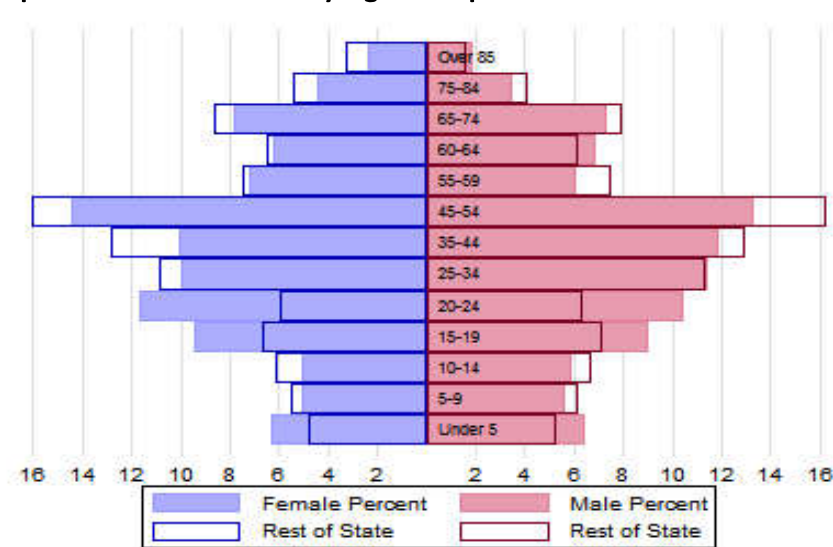


The Population

City Population 1970 to 2014



Population Distribution by Age Group



Population Distribution by Race and Ethnicity

Subgroups of the population as a percent of the total	2000	2013	Gateway Cities 2013	State 2013
White	94.5	90.6	73.8	89.0
Black	0.9	1.7	8.0	2.8
Asian	0.8	2.4	5.3	4.8
Foreign-born	7.1	8.8	19.9	12.1
Hispanic	5.0	7.5	19.6	4.3
Origin as percent of Hispanic				
Central America	0.8	1.9	15.8	20.3
Dominican Republic	0.3	1.2	14.4	17.9
Mexico	2.9	4.3	5.5	11.4
Puerto Rico	83.2	80.9	45.5	33.6

Recent Demographic Behavior

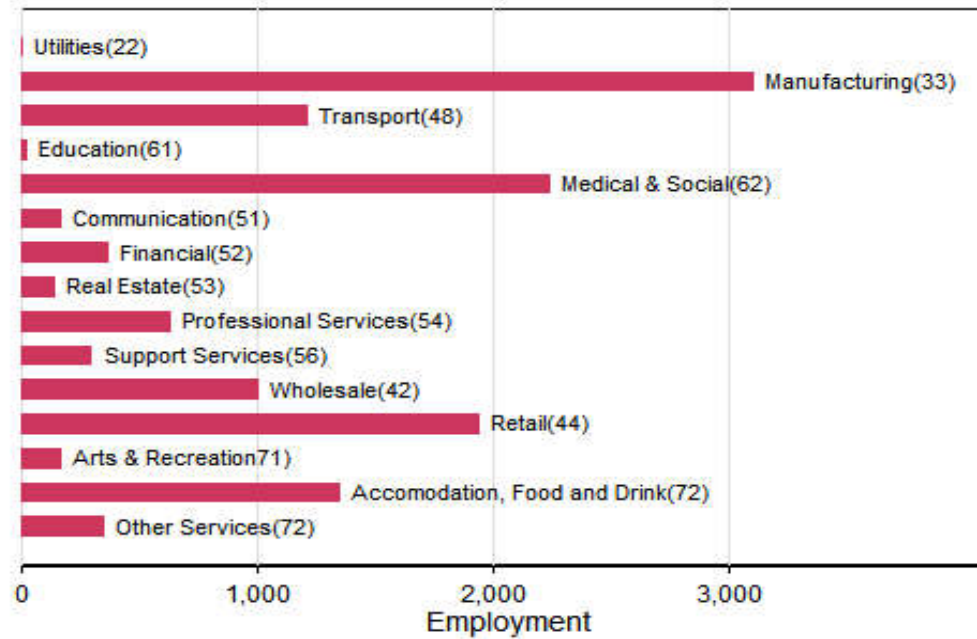
Indicator	Westfield	Gateway Cities	State
Birth Rate (per 1,000 females 15-44)	50.7	62.1	52.8
Low birthweight (<2.5 kg. % of births)	5.5	8.0	7.7
Births to teen mothers (15-19 years)†	3.6	6.0	3.8
Birth rate of teen mothers‡	-	22.3	12.0
Infant mortality (per 1,000 live births)	-	4.9	4.4
Mortality rate (per 100,000 residents)	852	844.9	800.0

†As percent of all births

‡Per 1,000 females aged 15-19 years

The Local Economy

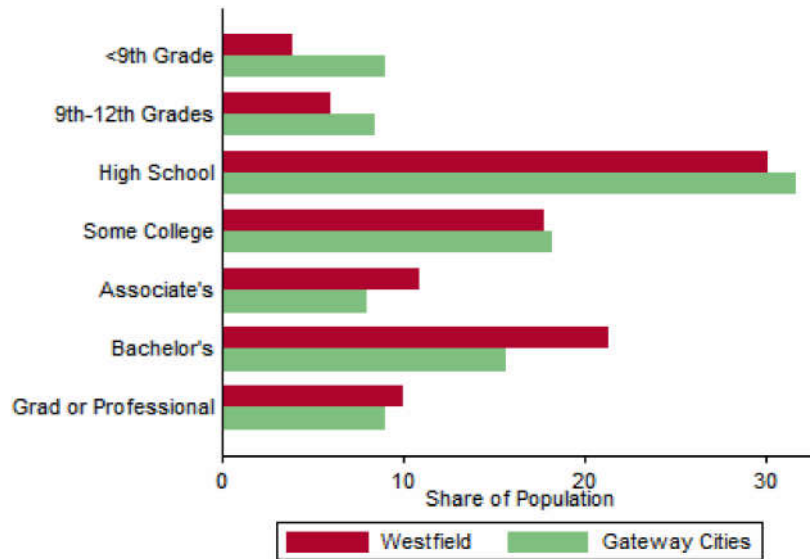
Employment by Major Sectors: 2012 (2-digit NAICS)



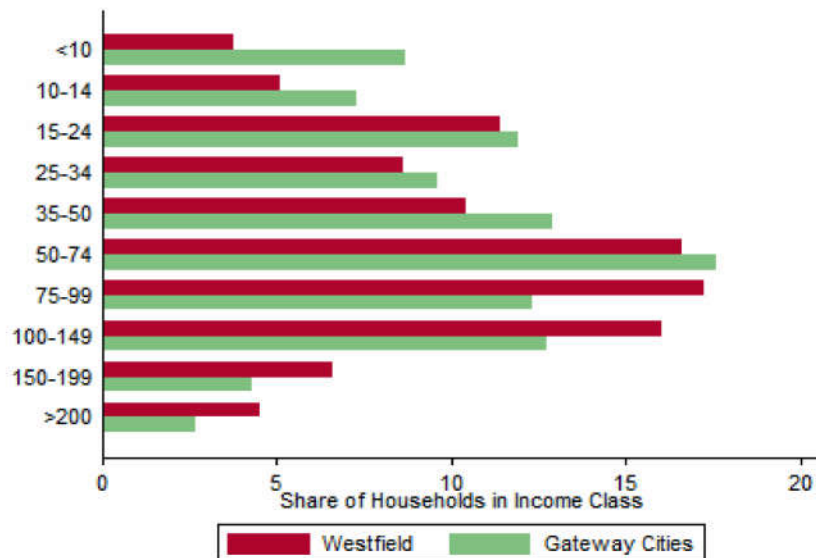
The Five Largest Industries: 2012 (4-digit NAICS industries)

Description	NAICS	Employment
Restaurants	7225	1000-2499
Grocery Stores	4451	500-999
Machine Shops and Turned Screw and Bolts	3327	500-999
Warehousing and Storage	4931	500-999
Paper Converting	3222	500-999

Educational Attainment of the Population Aged 25 and Older



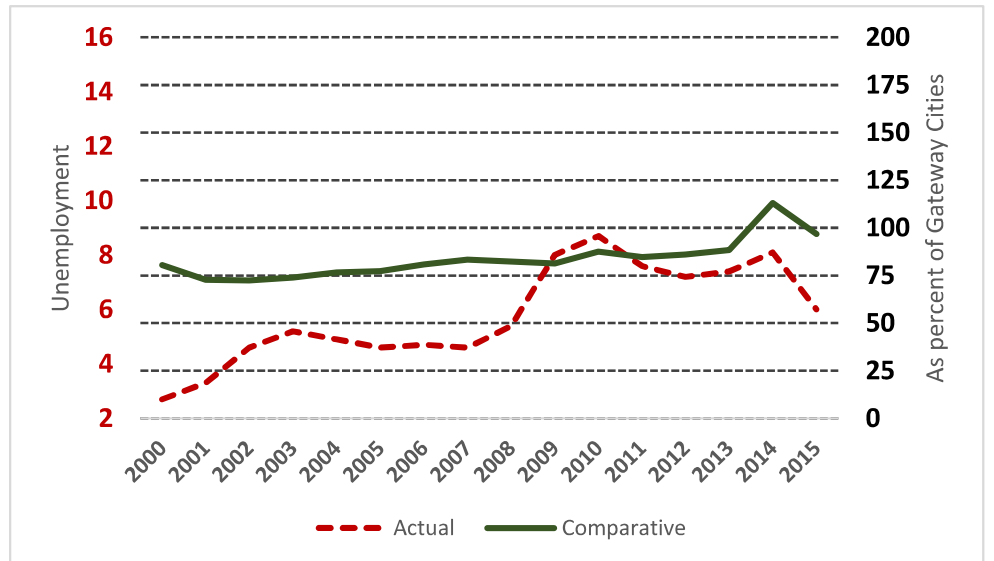
Distribution of Households by Income Class (in \$1,000)



Key Indicators of Income and Commuting

Indicator	Westfield	Gateway Cities
Median Family Income (\$)	64,037	60,087
Families below Poverty Line (%)	5.9	14.3
Children < 18 below Poverty Line (%)	18.3	25.5
Families with Food Assistance (%)	16.5	20.8
Mean Travel Time to Work (Mins.)	23.5	26.4
Commute with Public Transit (%)	0.4	8.6

Unemployment Rate: 2000-2015



Housing

Housing Market Indicators in 2013

Indicator	Westfield	Gateway Cities	State
Share owner-occupied	0.69	0.50	0.62
Median Home Value	224,000	252,085	325,800
Average Rent for Studio	608	735	746
Average Rent for One-Bedroom	696	786	765
Average Rent for Two-Bedroom	1067	1097	926
Average Rent for Three-Bedroom	1194	1182	863
Average Size of Owner-Occupied Households	2.45	2.68	2.25
Average Size of Tenant Households	2.74	2.38	2.70

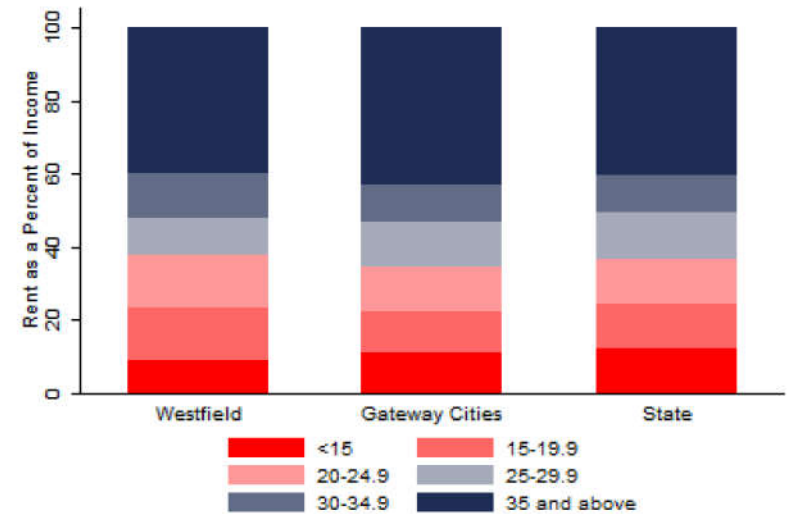
Education

Indicators for 2014

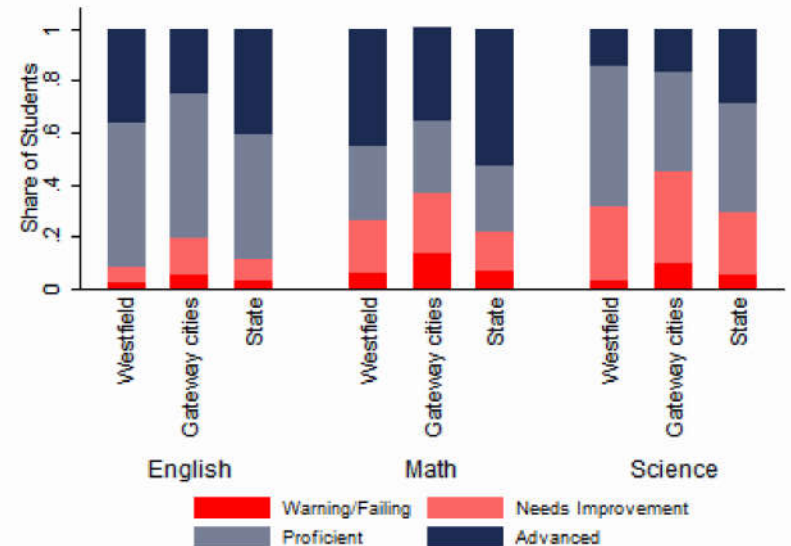
Indicator	Westfield	Gateway Cities	State
Average class size	17.7	18.3	18.1
Percent Proficient or Advanced (English 10th)	92.0	80.3	90.0
Percent Proficient or Advanced (Math 10th)	74.0	63.4	79.0
Student Growth Percentile English (10th)	48.0	43.7	51.0
Student Growth Percentile Math (10th)	47.0	43.4	50.0
Graduates attending college or university†	71.8	69.7	76.6
Male Dropout Rate	5.7	11.8	6.7
Female Dropout Rate	3.8	7.9	4.4
English Language Learners Dropout Rate	13.3	16.8	14.9
Low Income Dropout Rate	9.5	11.8	10.2

†Percent of 2013 class

Housing Affordability



10th Grade MCAS Scores in 2014



Mortality and Health

	Westfield	Gateway Cities	State
Lung Cancer Deaths (per 100,000 people) †	63.3	61.3	54.1
Cardiovascular Disease Deaths (per 100,000) †	265.4	254.7	237.4
Opioid Overdose Deaths (per 100,000)‡	14.4	25.5	13.0
HIV/Aids Prevalence Rate (per 100,000 people) 2010†	61.8	317.0	282.3
Admissions to DPH Substance Abuse Programs (per 100,000 people) ‡	1242	2189	1568
Hospital Discharges for Asthma (per 100,000) 2009	73.0	208.8	162.0
Percent overweight or obese children in grade 10 ‡	13.6	38.2	32.3
Percent of population on some form of non-private insurance 2013	24.9	36.1	17.2

†2010

‡2014

Civic Engagement

Voting Behavior in 2014

Indicator	Westfield	Gateway Cities	State
Registered voters as percent of population aged 18 and above	74.4	75.1	76.0
Voters in 2014 election as percent of registered voters	52.7	43.5	72.7
Voters in 2014 election as percent of population aged 18 and above	39.2	32.8	55.2

Not-for-Profit Sector

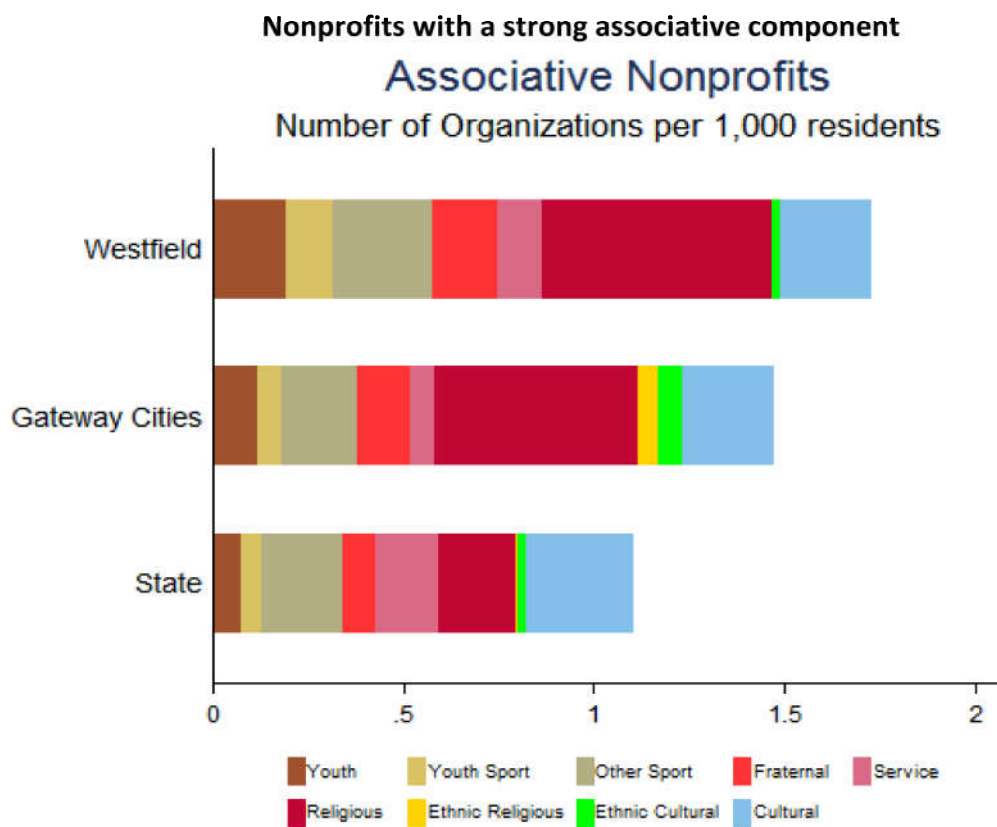
Indicator (in \$ per capita)	Westfield	Gateway Cities	State
Assets of Education, Finance, and Medical Non-Profits	748	10,152	27,527
Assets of Other Non-Profits	1,971	5,530	18,501
Revenue of Education, Finance, and Medical Non-Profits	1,606	4,361	10,472
Revenue of Other Non-Profits	1,160	3,050	10,589

Major Nonprofits in Education, Finance and Health Services (in \$millions)

Name	Revenues	Assets	Area
Trustees of Noble Hospital Inc	55.16	25.59	Healthcare
Noble Visiting Nurse and Hospice Services Inc	6.64	1.57	Healthcare
Westfield Medical Corporation	3.84	0.79	Healthcare
Community Christian School Inc	0.44	0.09	Education
American Registry of Medical Assistants	0.59	0.35	Healthcare
Savage Arms Employees Credit Union	0.06	1.12	Financial
Noble Health Services 18-5167006	0.05	1.45	Healthcare

Other Nonprofits (in \$millions)

Name	Revenues	Assets	Area
Carson Center for Human Services Inc	17.72	4.00	Mental Health
YMCA of Greater Westfield Inc	2.91	10.42	Human Services
Massachusetts Foundation for Learning Disabilities	2.66	2.97	Education
Boys & Girls Club of Greater Westfield	1.67	5.00	Youth Development
Stanley Park of Westfield Inc	1.66	9.02	Sports
Boy Scouts of America	1.26	2.10	Youth Development
Westfield Athenaeum	1.10	5.89	Public Benefit
Albert & Amelia Ferst Operating Foundation	0.96	6.38	Philanthropy
Domus Incorporated	0.93	6.34	Human Services
The Westfield State Foundation Inc	0.76	7.01	Education
Westfield Museum Inc	0.48	0.72	Arts & Culture
Greater Westfield Mass Committee for the Homeless Inc	0.44	0.57	Housing
Westfield 202 Inc	0.41	4.08	Housing
Westfield Business Improvement District Inc	0.28	0.14	Community Improvement



Westfield