

2016

Data Profiles - Taunton

Mosakowski Institute
Clark University

John C. Brown
Clark University

Joe Krahe
Clark University

Sarah Philbrick
Clark University

Recommended Citation

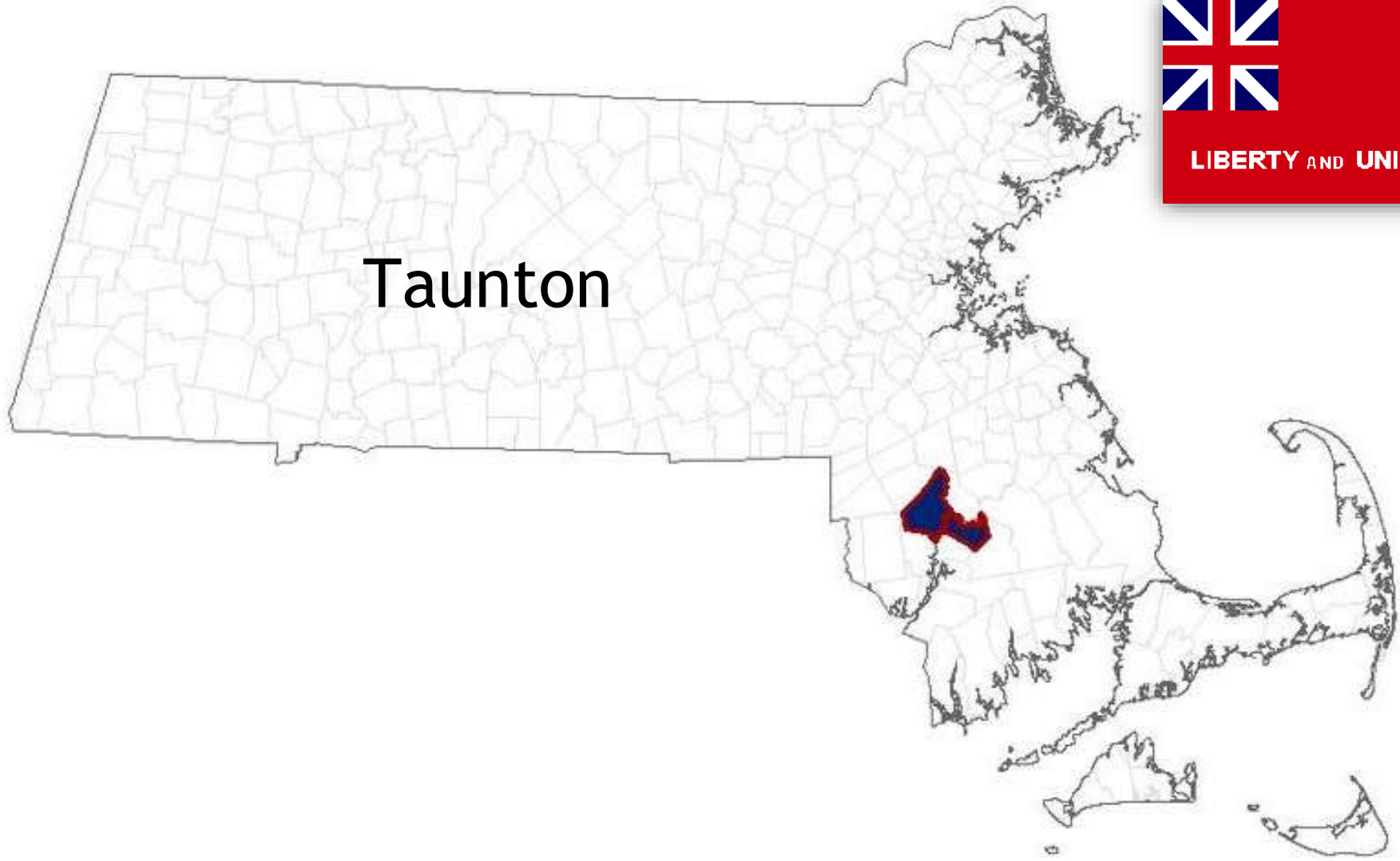
Mosakowski Institute; Brown, John C.; Krahe, Joe; and Philbrick, Sarah, "Data Profiles - Taunton" (2016). *Mosakowski Institute for Public Enterprise*. 40.
<https://commons.clarku.edu/mosakowskiinstitute/40>

This Article is brought to you for free and open access by the Academic Departments, Centers & Programs at Clark Digital Commons. It has been accepted for inclusion in Mosakowski Institute for Public Enterprise by an authorized administrator of Clark Digital Commons. For more information, please contact mkrikonis@clarku.edu, jodolan@clarku.edu.

Data Profiles - Taunton

Keywords

data profiles, taunton, gateway cities, working cities



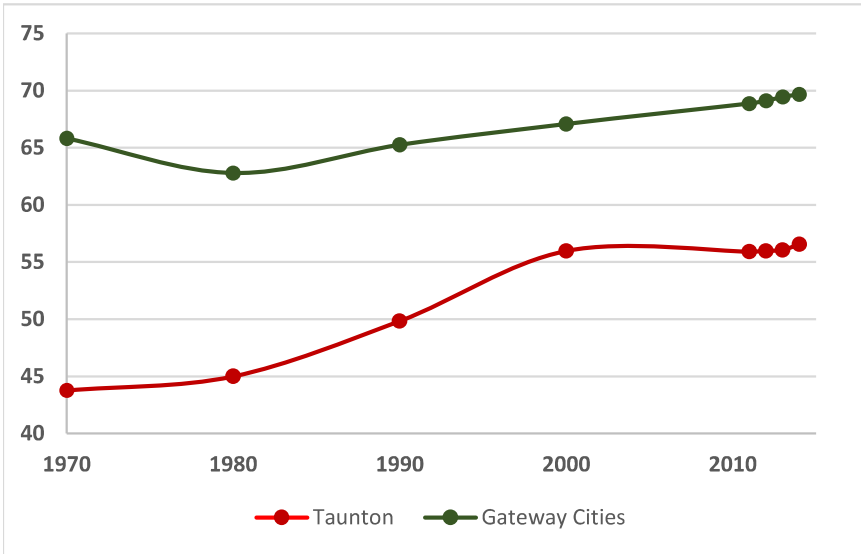
Taunton



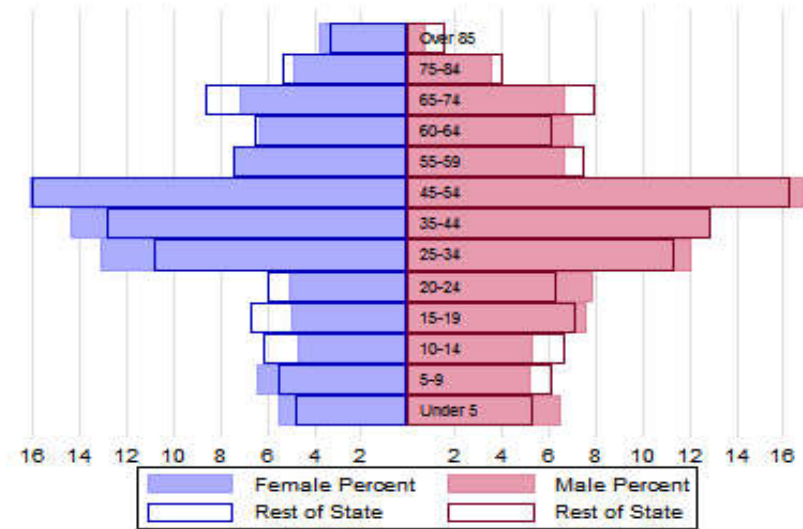
LIBERTY AND UNION

The Population

City Population 1970 to 2014



Population Distribution by Age Group



Population Distribution by Race and Ethnicity

Subgroups of the population as a percent of the total	2000	2013	Gateway Cities 2013	State 2013
White	91.7	89.4	73.8	89.0
Black	2.7	5.2	8.0	2.8
Asian	0.6	1.0	5.3	4.8
Foreign-born	10.1	11.4	19.9	12.1
Hispanic	3.9	5.5	19.6	4.3
Origin as percent of Hispanic				
Central America	2.6	5.9	15.8	20.3
Dominican Republic	3.3	6.0	14.4	17.9
Mexico	3.9	5.6	5.5	11.4
Puerto Rico	69.1	65.4	45.5	33.6

Recent Demographic Behavior

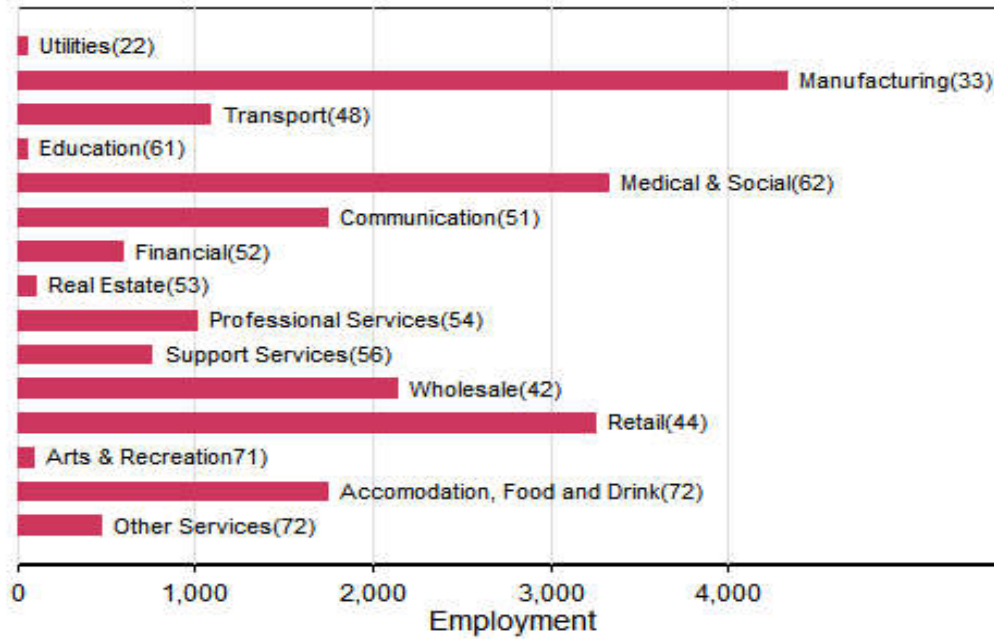
Indicator	Taunton	Gateway Cities	State
Birth Rate (per 1,000 females 15-44)	59.1	62.1	52.8
Low birthweight (<2.5 kg. % of births)	7.4	8.0	7.7
Births to teen mothers (15-19 years)†	4.6	6.0	3.8
Birth rate of teen mothers‡	16.6	22.3	12.0
Infant mortality (per 1,000 live births)	2.9	4.9	4.4
Mortality rate (per 100,000 residents)	828	844.9	800.0

†As percent of all births

‡Per 1,000 females aged 15-19 years

The Local Economy

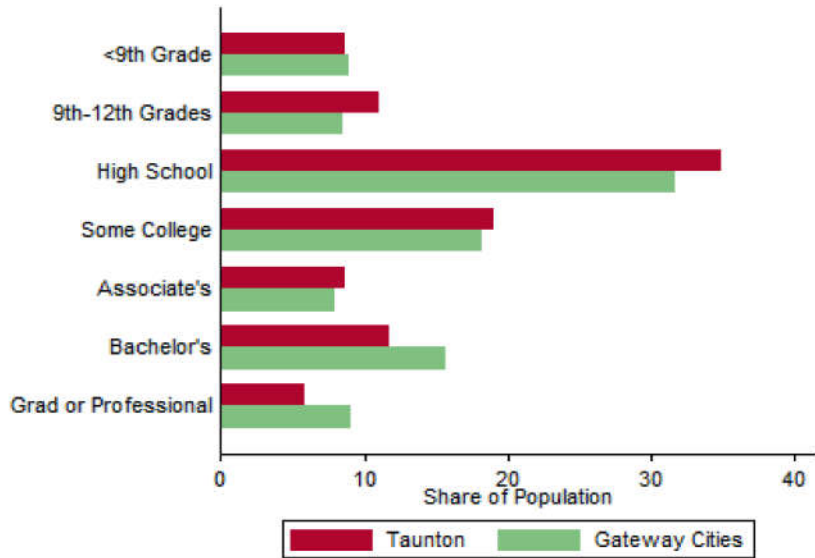
Employment by Major Sectors: 2012 (2-digit NAICS)



The Five Largest Industries: 2012 (4-digit NAICS industries)

Description	NAICS	Employment
Restaurants	7225	1000-2499
Wired Telecommunications Carriers	5171	1000-2499
Grocery Wholesalers	4244	500-999
Grocery Stores	4451	500-999
Individual and Family Services	6241	500-999

Educational Attainment of the Population Aged 25 and Older



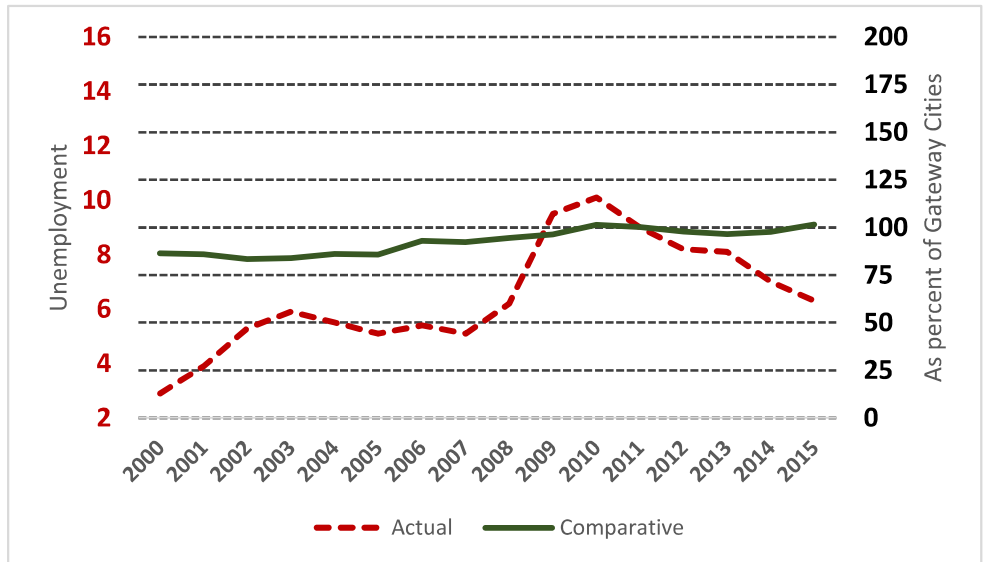
Key Indicators of Income and Commuting

Indicator	Taunton	Gateway Cities
Median Family Income (\$)	50,790	60,087
Families below Poverty Line (%)	10.4	14.3
Children < 18 below Poverty Line (%)	16.7	25.5
Families with Food Assistance (%)	18.8	20.8
Mean Travel Time to Work (Mins.)	29.8	26.4
Commute with Public Transit (%)	1.4	8.6

Distribution of Households by Income Class (in \$1,000)



Unemployment Rate: 2000-2015



Housing

Housing Market Indicators in 2013

Indicator	Taunton	Gateway Cities	State
Share owner-occupied	0.62	0.50	0.62
Median Home Value	231,800	252,085	325,800
Average Rent for Studio	551	735	746
Average Rent for One-Bedroom	585	786	765
Average Rent for Two-Bedroom	828	1097	926
Average Rent for Three-Bedroom	1060	1182	863
Average Size of Owner-Occupied Households	2.38	2.68	2.25
Average Size of Tenant Households	2.65	2.38	2.70

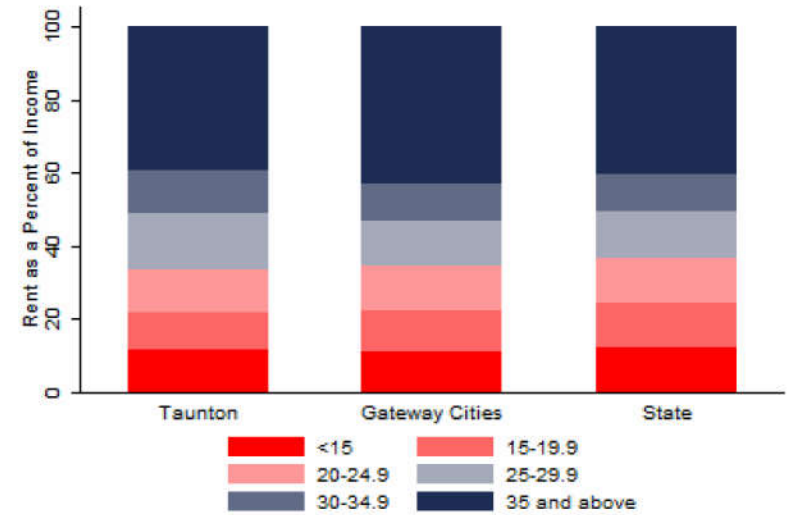
Education

Indicators for 2014

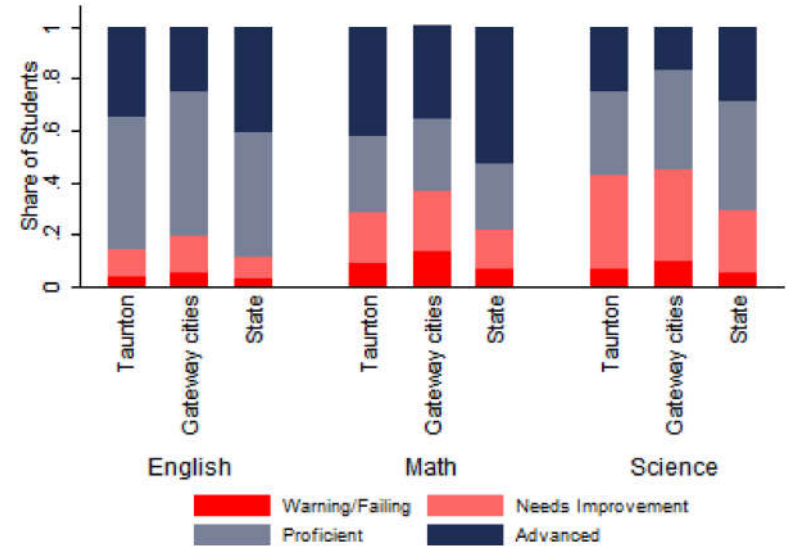
Indicator	Taunton	Gateway Cities	State
Average class size	20.6	18.3	18.1
Percent Proficient or Advanced (English 10th)	86.0	80.3	90.0
Percent Proficient or Advanced (Math 10th)	71.0	63.4	79.0
Student Growth Percentile English (10th)	42.0	43.7	51.0
Student Growth Percentile Math (10th)	39.0	43.4	50.0
Graduates attending college or university†	66.5	69.7	76.6
Male Dropout Rate	10.0	11.8	6.7
Female Dropout Rate	7.3	7.9	4.4
English Language Learners Dropout Rate	22.2	16.8	14.9
Low Income Dropout Rate	11.1	11.8	10.2

†Percent of 2013 class

Housing Affordability



10th Grade MCAS Scores in 2014



Mortality and Health

	Taunton	Gateway Cities	State
Lung Cancer Deaths (per 100,000 people) †	69.8	61.3	54.1
Cardiovascular Disease Deaths (per 100,000) †	264.8	254.7	237.4
Opioid Overdose Deaths (per 100,000)‡	30.1	25.5	13.0
HIV/Aids Prevalence Rate (per 100,000 people) 2010†	159.7	317.0	282.3
Admissions to DPH Substance Abuse Programs (per 100,000 people) ‡	2228	2189	1568
Hospital Discharges for Asthma (per 100,000) 2009	182.5	208.8	162.0
Percent overweight or obese children in grade 10 ‡	38.2	38.2	32.3
Percent of population on some form of non-private insurance 2013	31.6	36.1	17.2

†2010

‡2014

Civic Engagement

Voting Behavior in 2014

Indicator	Taunton	Gateway Cities	State
Registered voters as percent of population aged 18 and above	72.8	75.1	76.0
Voters in 2014 election as percent of registered voters	46.1	43.5	72.7
Voters in 2014 election as percent of population aged 18 and above	33.5	32.8	55.2

Not-for-Profit Sector

Indicator (in \$ per capita)	Taunton	Gateway Cities	State
Assets of Education, Finance, and Medical Non-Profits	91	10,152	27,527
Assets of Other Non-Profits	1,876	5,530	18,501
Revenue of Education, Finance, and Medical Non-Profits	363	4,361	10,472
Revenue of Other Non-Profits	1,603	3,050	10,589

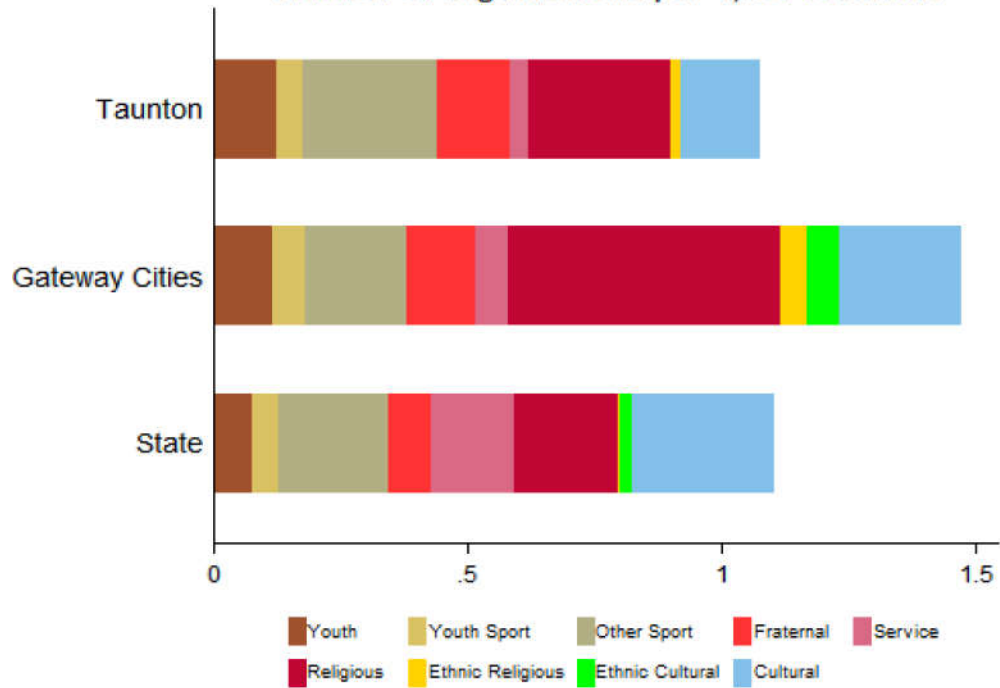
Major Nonprofits in Education, Finance and Health Services (in \$millions)

Name	Revenues	Assets	Area
Faculty Practice Foundation Inc	10.33	2.17	Healthcare
Marian Manor Inc	9.89	2.94	Healthcare

Other Nonprofits (in \$millions)

Name	Revenues	Assets	Area
Community Counseling of Bristol County Inc	24.38	10.60	Mental Health
Community Care Services Inc	17.84	11.26	Human Services
Homes for Our Troops Inc	16.33	30.62	Housing
Triumph Inc	5.66	3.21	Education
Associates for Human Services Inc	5.37	4.60	Human Services
Preparatory Rehabilitation for Individual Development & Employment	3.69	1.62	Employment
South Eastern Economic Dev Corp	3.30	10.51	Community Improvement
Segregansett Country Club	1.55	1.40	Sports
Community Care-A-Vans Inc	1.24	0.33	Human Services
Benevolent & Protective Order of Elks of the USA	1.13	1.28	Membership Benefit
Boys and Girls Club of Taunton Incorporated	1.05	2.37	Youth Development
Bristol County Savings Charitable Foundation Inc	1.01	6.99	Philanthropy
Southeast MA Electrical Industry Labor Management Cooperation Tr	0.52	0.44	Employment
Society of St Vincent De Paul (Taunton District)	0.49	1.00	Community Improvement
Taunton Community Access and Media Inc	0.44	1.43	Human Services

Nonprofits with a strong associative component
Associative Nonprofits
 Number of Organizations per 1,000 residents



Taunton