

2016

# Data Profiles - Springfield

Mosakowski Institute  
*Clark University*

John C. Brown  
*Clark University*

Joe Krahe  
*Clark University*

Sarah Philbrick  
*Clark University*

---

## Recommended Citation

Mosakowski Institute; Brown, John C.; Krahe, Joe; and Philbrick, Sarah, "Data Profiles - Springfield" (2016). *Mosakowski Institute for Public Enterprise*. 41.  
<https://commons.clarku.edu/mosakowskiinstitute/41>

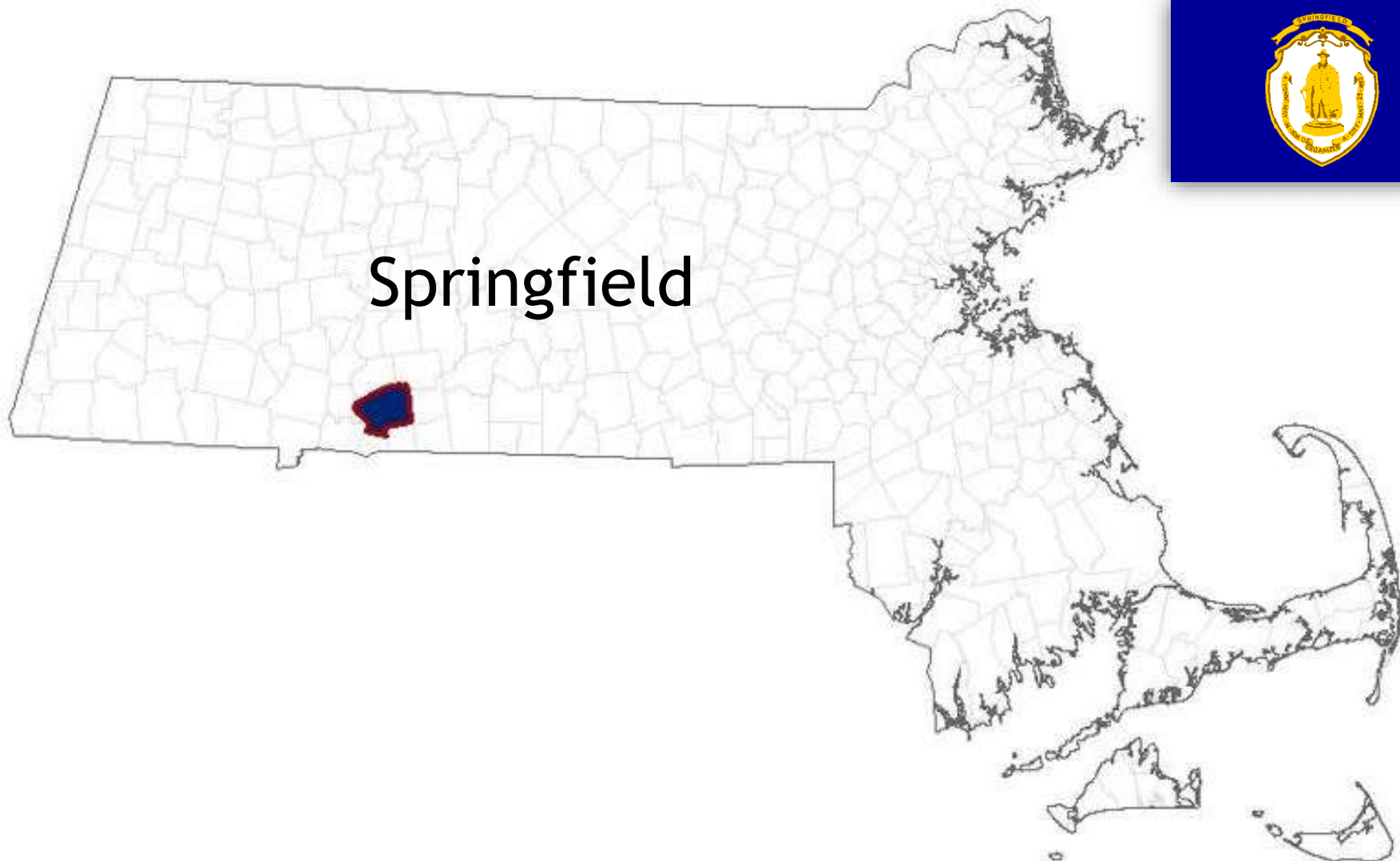
This Article is brought to you for free and open access by the Academic Departments, Centers & Programs at Clark Digital Commons. It has been accepted for inclusion in Mosakowski Institute for Public Enterprise by an authorized administrator of Clark Digital Commons. For more information, please contact [mkrikonis@clarku.edu](mailto:mkrikonis@clarku.edu), [jodolan@clarku.edu](mailto:jodolan@clarku.edu).

---

## Data Profiles - Springfield

**Keywords**

data profiles, springfield, gateway cities, working cities

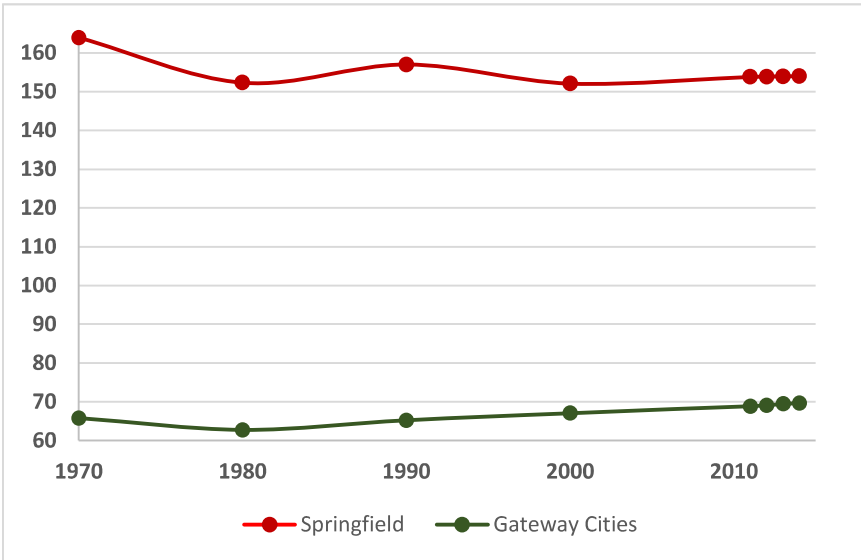


Springfield

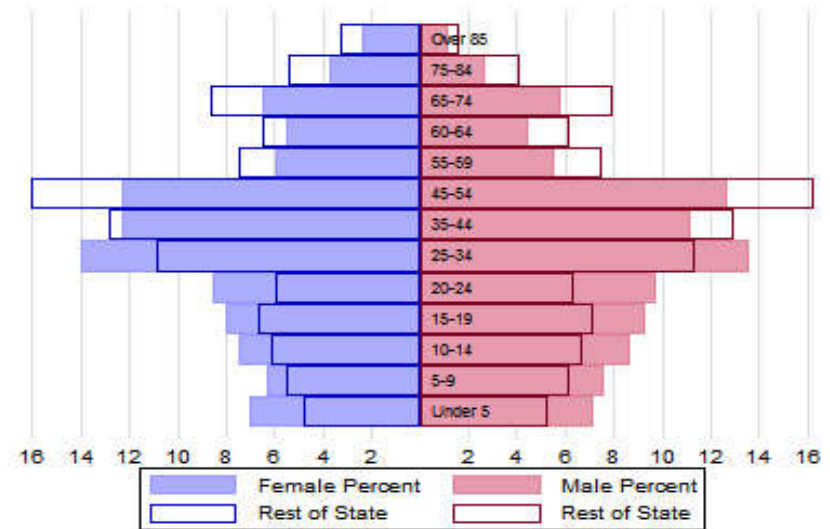


# The Population

## City Population 1970 to 2014



## Population Distribution by Age Group



## Population Distribution by Race and Ethnicity

Subgroups of the population as a percent of the total	2000	2013	Gateway Cities 2013	State 2013
White	56.1	52.5	73.8	89.0
Black	21.0	21.7	8.0	2.8
Asian	1.9	2.2	5.3	4.8
Foreign-born	8.0	11.0	19.9	12.1
Hispanic	27.2	38.8	19.6	4.3
<b>Origin as percent of Hispanic</b>				
Central America	0.9	2.4	15.8	20.3
Dominican Republic	1.5	4.5	14.4	17.9
Mexico	1.5	2.5	5.5	11.4
Puerto Rico	85.3	85.4	45.5	33.6

## Recent Demographic Behavior

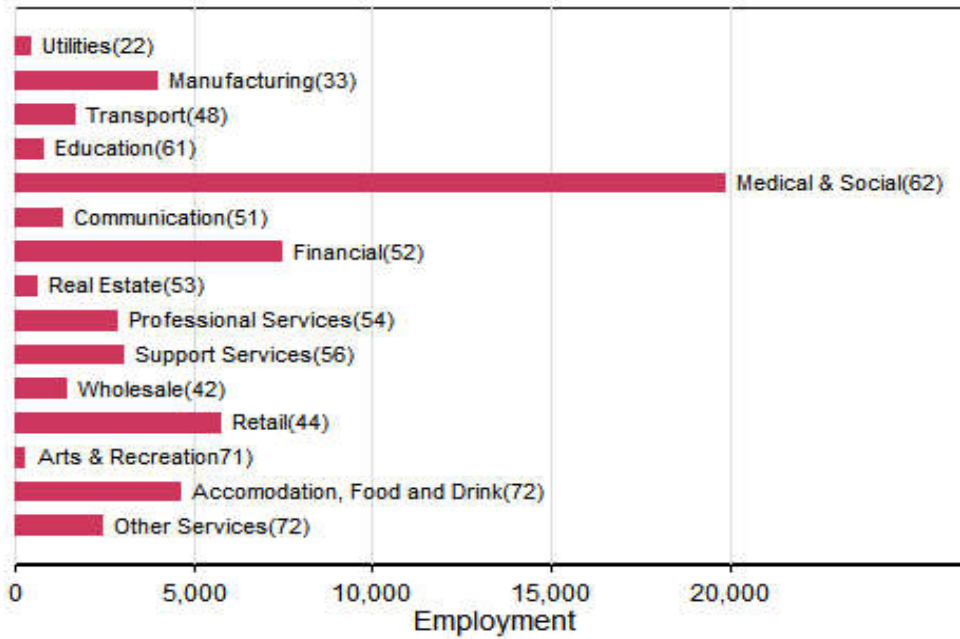
Indicator	Springfield	Gateway Cities	State
Birth Rate (per 1,000 females 15-44)	64.0	62.1	52.8
Low birthweight (<2.5 kg. % of births)	9.3	8.0	7.7
Births to teen mothers (15-19 years)†	13.2	6.0	3.8
Birth rate of teen mothers‡	42.3	22.3	12.0
Infant mortality (per 1,000 live births)	9.2	4.9	4.4
Mortality rate (per 100,000 residents)	784	844.9	800.0

†As percent of all births

‡Per 1,000 females aged 15-19 years

# The Local Economy

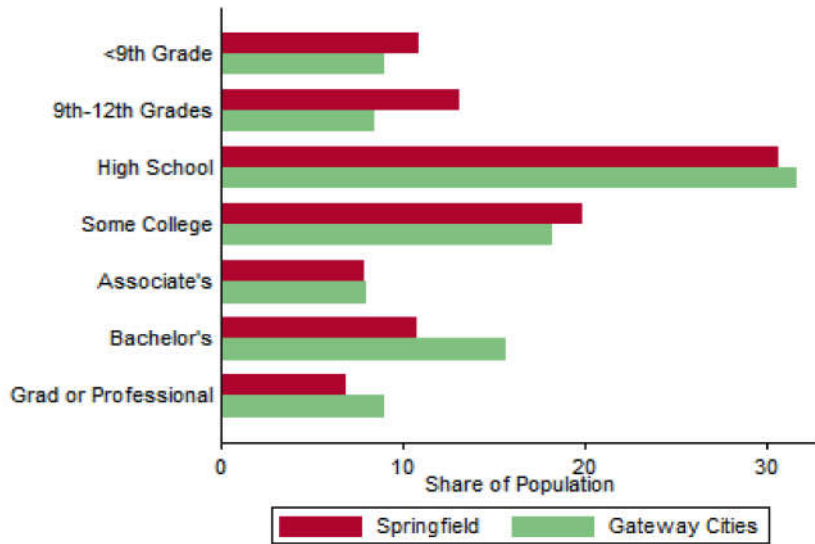
## Employment by Major Sectors: 2012 (2-digit NAICS)



## The Five Largest Industries: 2012 (4-digit NAICS industries)

Description	NAICS	Employment
General Hospitals	6221	5000-10000
Restaurants	7225	2500-4999
Physicians Offices	6211	2500-4999
Insurance Carriers	5241	2500-4999
Fabricated Metal	3329	1000-2499

### Educational Attainment of the Population Aged 25 and Older



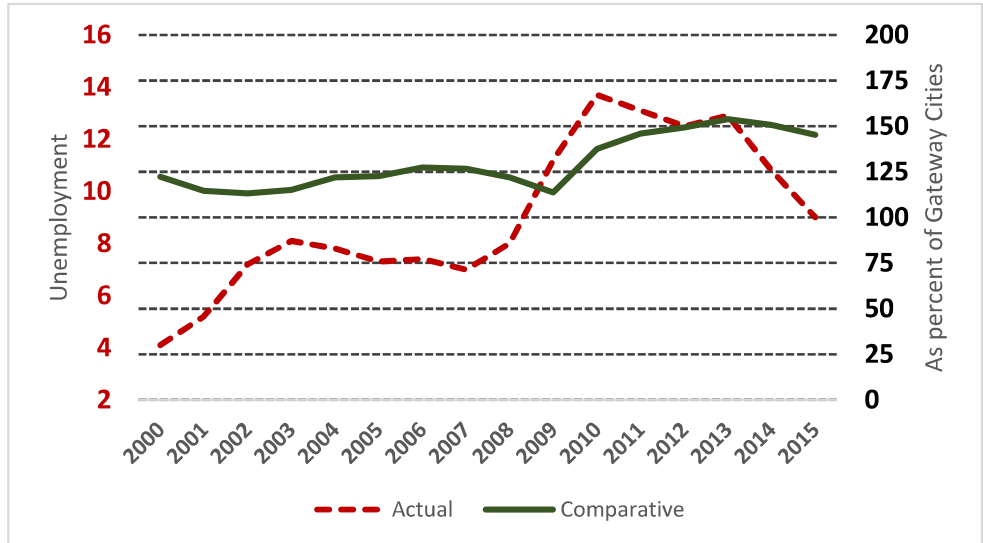
### Key Indicators of Income and Commuting

Indicator	Springfield	Gateway Cities
Median Family Income (\$)	33,326	60,087
Families below Poverty Line (%)	26.7	14.3
Children < 18 below Poverty Line (%)	45.8	25.5
Families with Food Assistance (%)	37.5	20.8
Mean Travel Time to Work (Mins.)	22.1	26.4
Commute with Public Transit (%)	6.1	8.6

### Distribution of Households by Income Class (in \$1,000)



### Unemployment Rate: 2000-2015



# Housing

## Housing Market Indicators in 2013

Indicator	Springfield	Gateway Cities	State
Share owner-occupied	0.47	0.50	0.62
Median Home Value	144,900	252,085	325,800
Average Rent for Studio	749	735	746
Average Rent for One-Bedroom	1197	786	765
Average Rent for Two-Bedroom	1346	1097	926
Average Rent for Three-Bedroom	1386	1182	863
Average Size of Owner-Occupied Households	2.73	2.68	2.25
Average Size of Tenant Households	2.60	2.38	2.70

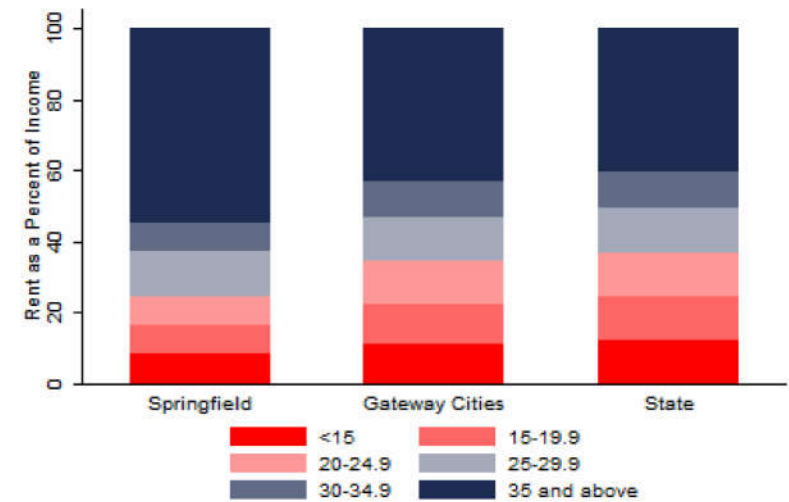
# Education

## Indicators for 2014

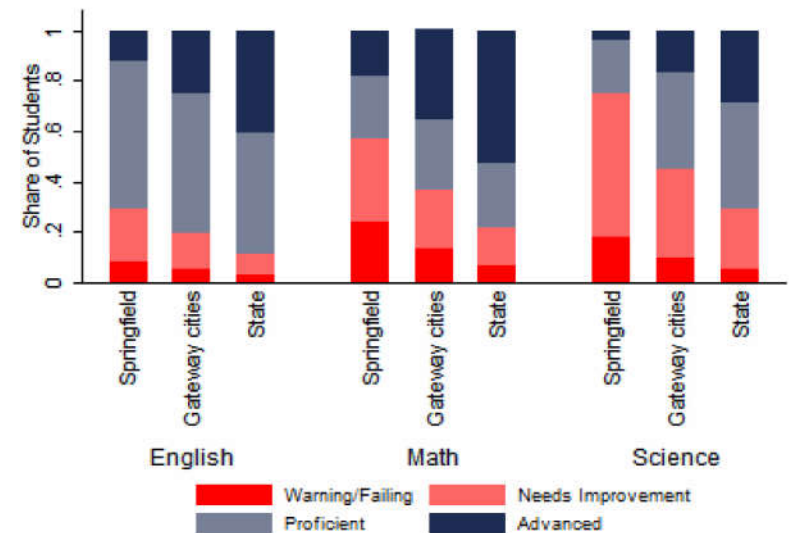
Indicator	Springfield	Gateway Cities	State
Average class size	17.4	18.3	18.1
Percent Proficient or Advanced (English 10th)	71.0	80.3	90.0
Percent Proficient or Advanced (Math 10th)	43.0	63.4	79.0
Student Growth Percentile English (10th)	41.0	43.7	51.0
Student Growth Percentile Math (10th)	40.0	43.4	50.0
Graduates attending college or university†	67.4	69.7	76.6
Male Dropout Rate	23.1	11.8	6.7
Female Dropout Rate	17.5	7.9	4.4
English Language Learners Dropout Rate	33.3	16.8	14.9
Low Income Dropout Rate	20.4	11.8	10.2

†Percent of 2013 class

## Housing Affordability



## 10th Grade MCAS Scores in 2014



## Mortality and Health

	Springfield	Gateway Cities	State
Lung Cancer Deaths (per 100,000 people) †	49.6	61.3	54.1
Cardiovascular Disease Deaths (per 100,000) †	235.7	254.7	237.4
Opioid Overdose Deaths (per 100,000)‡	10.4	25.5	13.0
HIV/Aids Prevalence Rate (per 100,000 people) 2010†	640.8	317.0	282.3
Admissions to DPH Substance Abuse Programs (per 100,000 people) ‡	2940	2189	1568
Hospital Discharges for Asthma (per 100,000) 2009	287.3	208.8	162.0
Percent overweight or obese children in grade 10 ‡	41.9	38.2	32.3
Percent of population on some form of non-private insurance 2013	51.1	36.1	17.2

†2010

‡2014



## Civic Engagement

### Voting Behavior in 2014

Indicator	Springfield	Gateway Cities	State
Registered voters as percent of population aged 18 and above	91.6	75.1	76.0
Voters in 2014 election as percent of registered voters	33.3	43.5	72.7
Voters in 2014 election as percent of population aged 18 and above	30.5	32.8	55.2

### Not-for-Profit Sector

Indicator (in \$ per capita)	Springfield	Gateway Cities	State
Assets of Education, Finance, and Medical Non-Profits	21,355	10,152	27,527
Assets of Other Non-Profits	6,400	5,530	18,501
Revenue of Education, Finance, and Medical Non-Profits	12,240	4,361	10,472
Revenue of Other Non-Profits	6,159	3,050	10,589

### Major Nonprofits in Education, Finance and Health Services (in \$millions)

Name	Revenues	Assets	Area
Baystate Medical Center Inc	1009.39	1188.88	Healthcare
Baystate Medical Practices Inc	219.75	34.50	Healthcare
Springfield College	157.82	253.16	Education
Western New England University	136.70	212.09	Education
Baystate Administrative Services Inc	95.00	40.14	Healthcare
American International College	79.92	59.99	Education
Visiting Nurse Association and Hospice of Western New England	22.71	8.84	Healthcare
Freedom Credit Union	20.45	520.99	Financial
Caring Health Center Inc	16.57	18.57	Healthcare
Baystate Health Inc	13.58	107.07	Healthcare

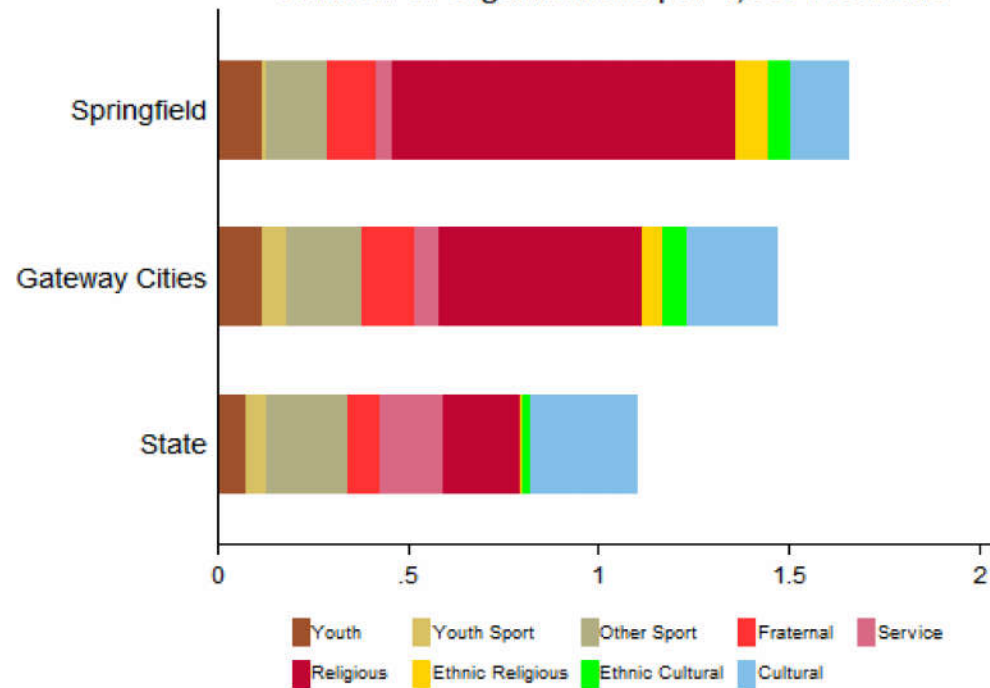
**Other Nonprofits** (in \$millions)

Name	Revenues	Assets	Area
Center for Human Development Inc	69.00	20.79	Mental Health
Hap Inc	61.76	24.98	Housing
New England Farm Workers Council Inc	57.16	19.08	Human Services
Behavioral Health Network Inc	55.41	13.66	Mental Health
Association for Community Living Inc	25.60	15.60	Human Services
Greater Springfield Senior Services Inc	24.18	10.68	Human Services
Guidewire Inceo Corr	16.41	4.00	Human Services
Holyoke Chicopee Springfield Head Start Inc	15.07	4.05	Education
Multicultural Community Service of the Pioneer Valley Inc	14.63	5.23	Human Services
Mental Health Association Inc	14.03	10.71	Human Services
YMCA of Greater Springfield	12.21	12.77	Human Services
American Hockey League	11.93	4.08	Sports
Regional Employment Board of Hampden County Inc	11.32	2.70	Employment
Irene E and George A Davis Foundation	9.92	85.19	Philanthropy

Nonprofits with a strong associative component

## Associative Nonprofits

Number of Organizations per 1,000 residents



Springfield