

2016

Data Profiles - Salem

Mosakowski Institute
Clark University

John C. Brown
Clark University

Joe Krahe
Clark University

Sarah Philbrick
Clark University

Recommended Citation

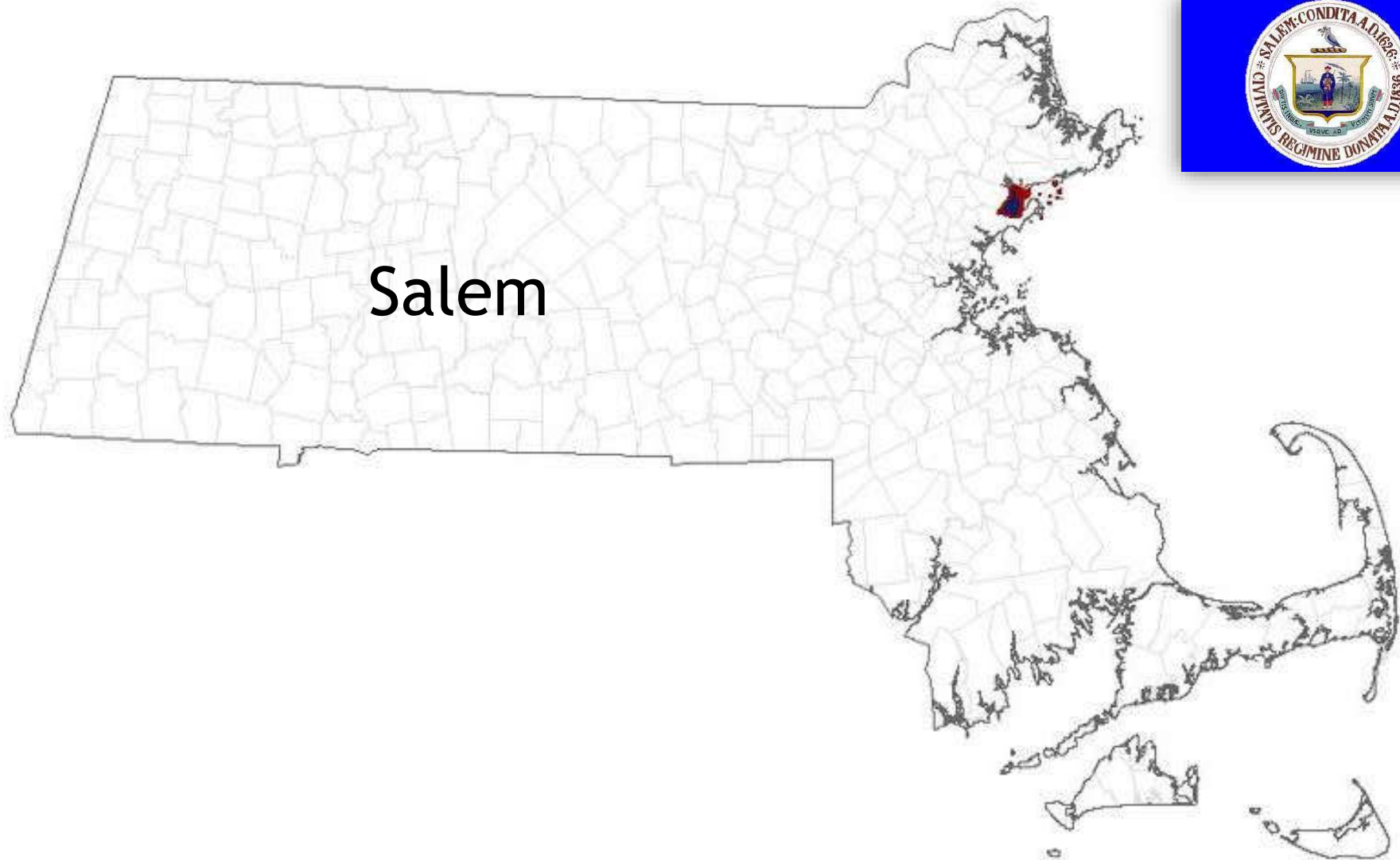
Mosakowski Institute; Brown, John C.; Krahe, Joe; and Philbrick, Sarah, "Data Profiles - Salem" (2016). *Mosakowski Institute for Public Enterprise*. 43.
<https://commons.clarku.edu/mosakowskiinstitute/43>

This Article is brought to you for free and open access by the Academic Departments, Centers & Programs at Clark Digital Commons. It has been accepted for inclusion in Mosakowski Institute for Public Enterprise by an authorized administrator of Clark Digital Commons. For more information, please contact mkrikonis@clarku.edu, jodolan@clarku.edu.

Data Profiles - Salem

Keywords

data profiles, salem, gateway cities, working cities

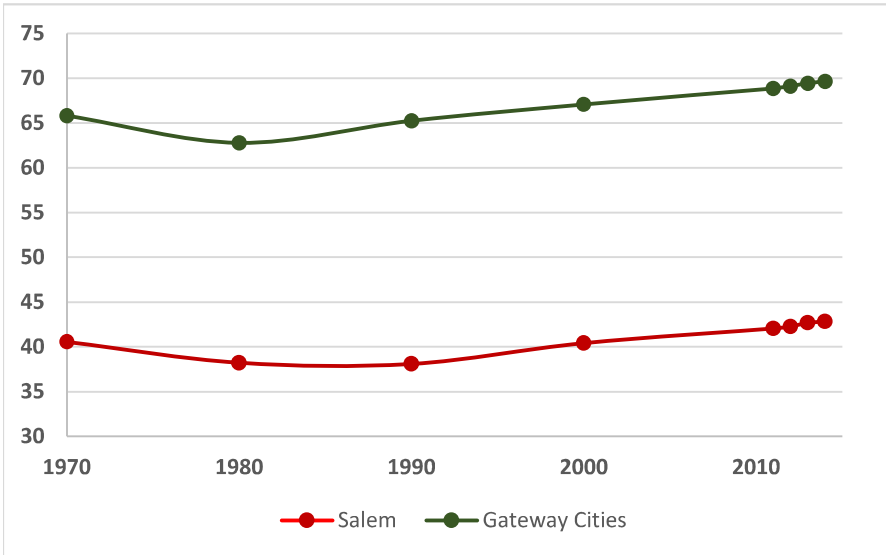


Salem

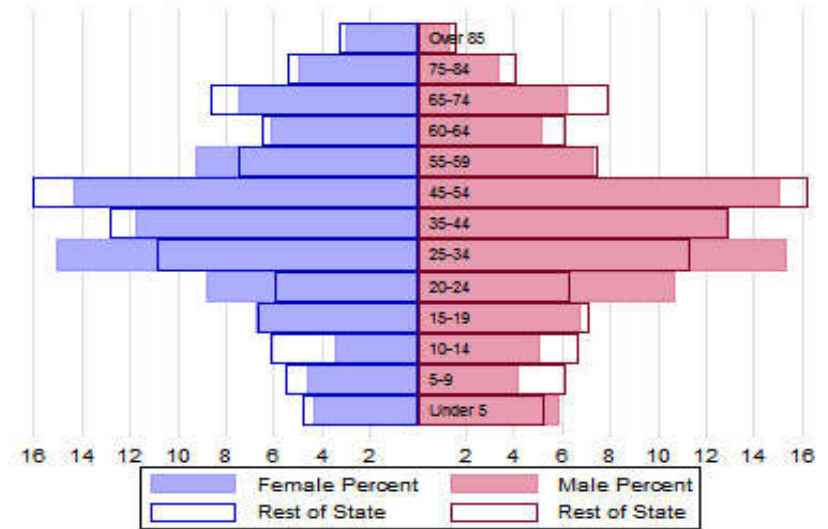


The Population

City Population 1970 to 2014



Population Distribution by Age Group



Population Distribution by Race and Ethnicity

Subgroups of the population as a percent of the total	2000	2013	Gateway Cities 2013	State 2013
White	85.4	83.1	73.8	89.0
Black	3.2	6.0	8.0	2.8
Asian	2.0	2.1	5.3	4.8
Foreign-born	11.9	14.6	19.9	12.1
Hispanic	11.2	15.6	19.6	4.3
Origin as percent of Hispanic				
Central America	3.6	5.3	15.8	20.3
Dominican Republic	47.9	58.0	14.4	17.9
Mexico	2.9	3.5	5.5	11.4
Puerto Rico	16.7	18.4	45.5	33.6

Recent Demographic Behavior

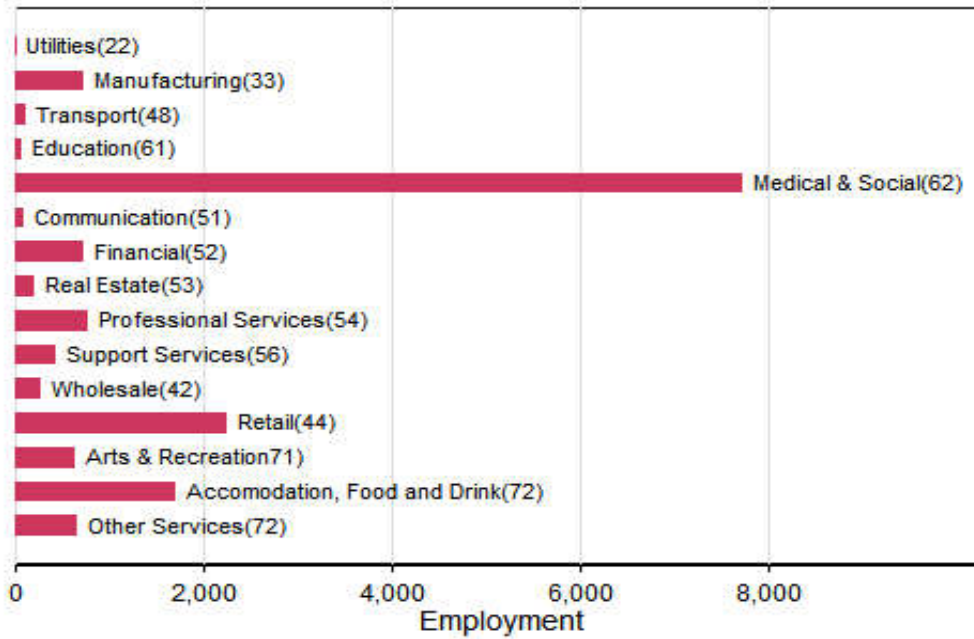
Indicator	Salem	Gateway Cities	State
Birth Rate (per 1,000 females 15-44)	54.4	62.1	52.8
Low birthweight (<2.5 kg. % of births)	6.7	8.0	7.7
Births to teen mothers (15-19 years)†	3.6	6.0	3.8
Birth rate of teen mothers‡	-	22.3	12.0
Infant mortality (per 1,000 live births)	-	4.9	4.4
Mortality rate (per 100,000 residents)	773	844.9	800.0

†As percent of all births

‡Per 1,000 females aged 15-19 years

The Local Economy

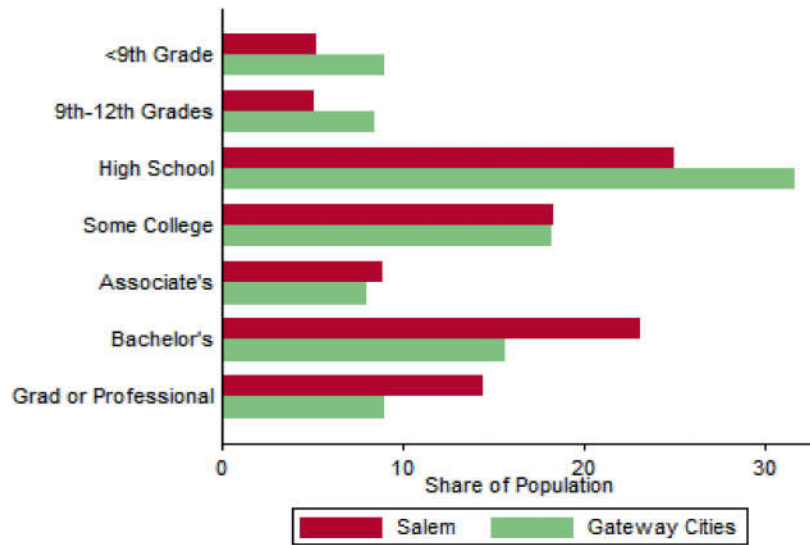
Employment by Major Sectors: 2012 (2-digit NAICS)



The Five Largest Industries: 2012
(4-digit NAICS industries)

Description	NAICS	Employment
General Hospitals	6221	2500-4999
Restaurants	7225	1000-2499
Physicians Offices	6211	1000-2499
Speciality Hospitals	6223	500-999
Grocery Stores	4451	500-999

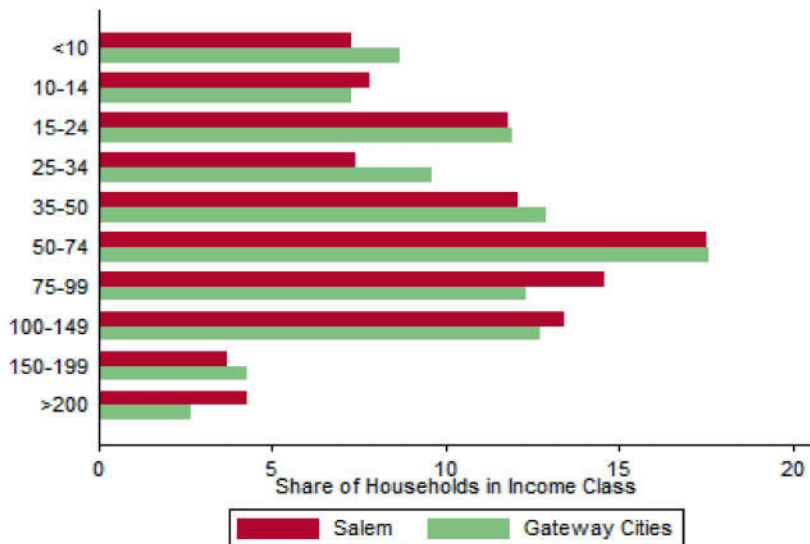
Educational Attainment of the Population Aged 25 and Older



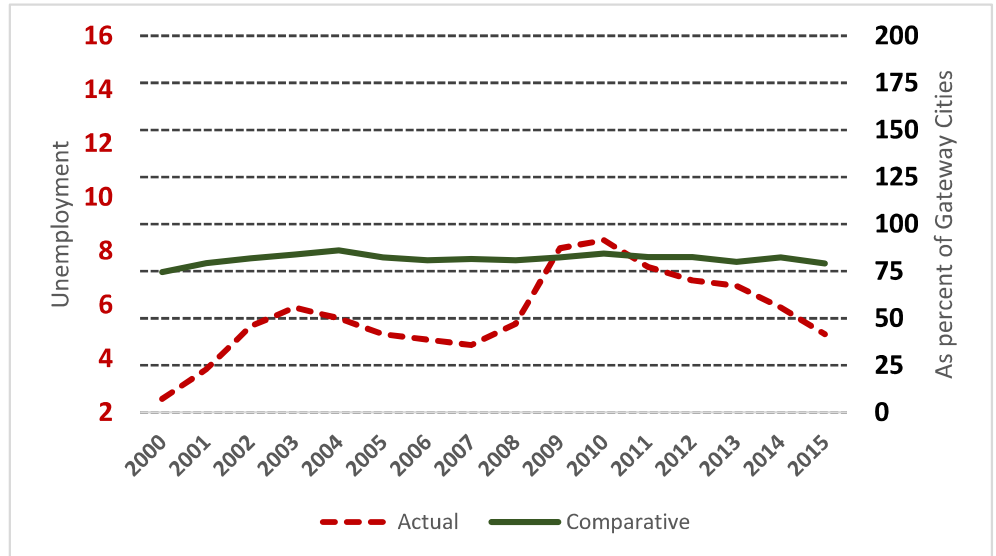
Key Indicators of Income and Commuting

Indicator	Salem	Gateway Cities
Median Family Income (\$)	55,932	60,087
Families below Poverty Line (%)	11.2	14.3
Children < 18 below Poverty Line (%)	24.7	25.5
Families with Food Assistance (%)	17	20.8
Mean Travel Time to Work (Mins.)	29	26.4
Commute with Public Transit (%)	11.7	8.6

Distribution of Households by Income Class (in \$1,000)



Unemployment Rate: 2000-2015



Housing

Housing Market Indicators in 2013

Indicator	Salem	Gateway Cities	State
Share owner-occupied	0.47	0.50	0.62
Median Home Value	303,500	252,085	325,800
Average Rent for Studio	1013	735	746
Average Rent for One-Bedroom	1015	786	765
Average Rent for Two-Bedroom	1272	1097	926
Average Rent for Three-Bedroom	1214	1182	863
Average Size of Owner-Occupied Households	2.05	2.68	2.25
Average Size of Tenant Households	2.28	2.38	2.70

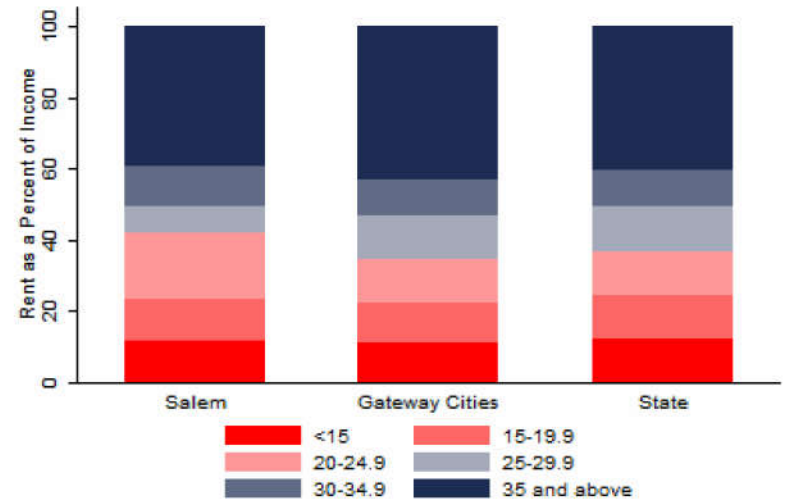
Education

Indicators for 2014

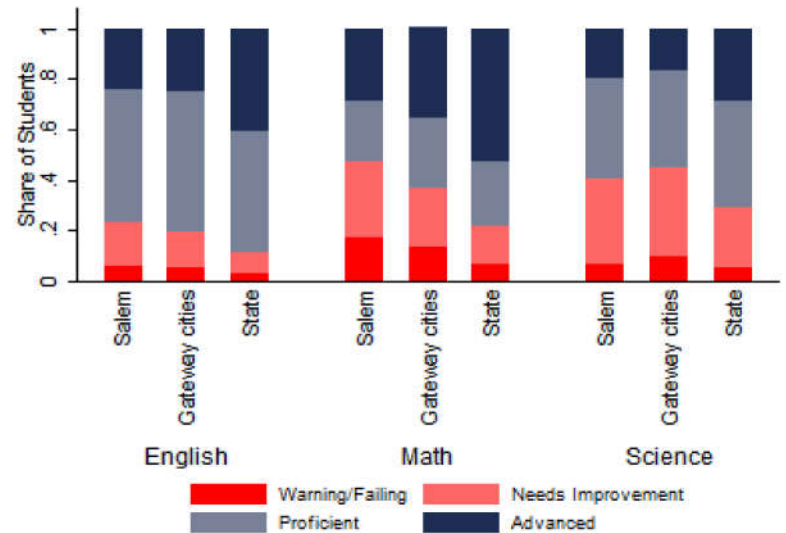
Indicator	Salem	Gateway Cities	State
Average class size	16.2	18.3	18.1
Percent Proficient or Advanced (English 10th)	77.0	80.3	90.0
Percent Proficient or Advanced (Math 10th)	53.0	63.4	79.0
Student Growth Percentile English (10th)	41.0	43.7	51.0
Student Growth Percentile Math (10th)	40.0	43.4	50.0
Graduates attending college or university†	72.7	69.7	76.6
Male Dropout Rate	3.8	11.8	6.7
Female Dropout Rate	3.4	7.9	4.4
English Language Learners Dropout Rate	0.0	16.8	14.9
Low Income Dropout Rate	4.8	11.8	10.2

†Percent of 2013 class

Housing Affordability



10th Grade MCAS Scores in 2014



Mortality and Health

	Salem	Gateway Cities	State
Lung Cancer Deaths (per 100,000 people) †	38.6	61.3	54.1
Cardiovascular Disease Deaths (per 100,000) †	289.9	254.7	237.4
Opioid Overdose Deaths (per 100,000)‡	25.7	25.5	13.0
HIV/Aids Prevalence Rate (per 100,000 people) 2010†	256.9	317.0	282.3
Admissions to DPH Substance Abuse Programs (per 100,000 people) ‡	1818	2189	1568
Hospital Discharges for Asthma (per 100,000) 2009	246.4	208.8	162.0
Percent overweight or obese children in grade 10 ‡	43.8	38.2	32.3
Percent of population on some form of non-private insurance 2013	30.6	36.1	17.2

†2010

‡2014

Civic Engagement

Voting Behavior in 2014

Indicator	Salem	Gateway Cities	State
Registered voters as percent of population aged 18 and above	77.2	75.1	76.0
Voters in 2014 election as percent of registered voters	49.6	43.5	72.7
Voters in 2014 election as percent of population aged 18 and above	38.3	32.8	55.2

Not-for-Profit Sector

Indicator (in \$ per capita)	Salem	Gateway Cities	State
Assets of Education, Finance, and Medical Non-Profits	3,125	10,152	27,527
Assets of Other Non-Profits	15,744	5,530	18,501
Revenue of Education, Finance, and Medical Non-Profits	599	4,361	10,472
Revenue of Other Non-Profits	2,888	3,050	10,589

Major Nonprofits in Education, Finance and Health Services (in \$millions)

Name	Revenues	Assets	Area
North Shore Community Health Inc	11.33	6.25	Healthcare
Seaport Credit Union	2.00	58.88	Financial
Mental Health and Addiction Network Inc	0.40	0.19	Healthcare
Salem Italian American Credit Union	0.07	1.25	Financial
The Yellow Umbrella Org. Inc.	0.03	0.03	Healthcare

Other Nonprofits (in \$millions)

Name	Revenues	Assets	Area
Peabody Essex Museum Inc	61.41	503.24	Arts & Culture
Childrens Friend and Family Services Inc	9.61	6.79	Human Services
For Kids Only Afterschool Incorporated	4.78	3.27	Human Services
Kernwood Country Club	4.67	9.61	Sports
Northeast Animal Shelter Inc	3.69	10.76	Animal
Salem State University Foundation Inc	3.34	29.53	Education
Plummer Home for Boys	3.27	3.52	Human Services
John Bertram House Inc	2.12	6.66	Housing
Home for Aged Women in Salem	2.07	3.34	Human Services
Salem Community Child Care Inc	1.61	0.51	Human Services

Nonprofits with a strong associative component

Associative Nonprofits

Number of Organizations per 1,000 residents

