

2016

Data Profiles - Revere

Mosakowski Institute
Clark University

John C. Brown
Clark University

Joe Krahe
Clark University

Sarah Philbrick
Clark University

Recommended Citation

Mosakowski Institute; Brown, John C.; Krahe, Joe; and Philbrick, Sarah, "Data Profiles - Revere" (2016). *Mosakowski Institute for Public Enterprise*. 44.
<https://commons.clarku.edu/mosakowskiinstitute/44>

This Article is brought to you for free and open access by the Academic Departments, Centers & Programs at Clark Digital Commons. It has been accepted for inclusion in Mosakowski Institute for Public Enterprise by an authorized administrator of Clark Digital Commons. For more information, please contact mkrikonis@clarku.edu, jodolan@clarku.edu.

Data Profiles - Revere

Keywords

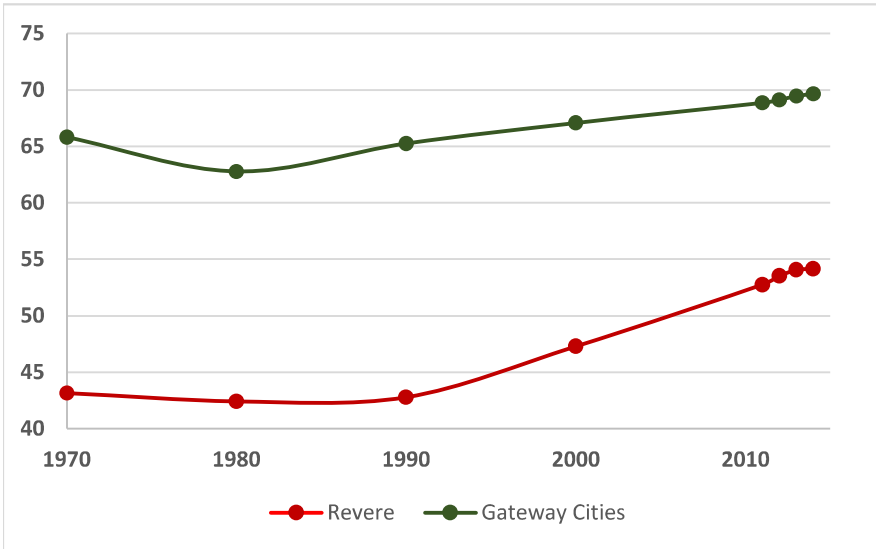
data profiles, revere, gateway cities, working cities



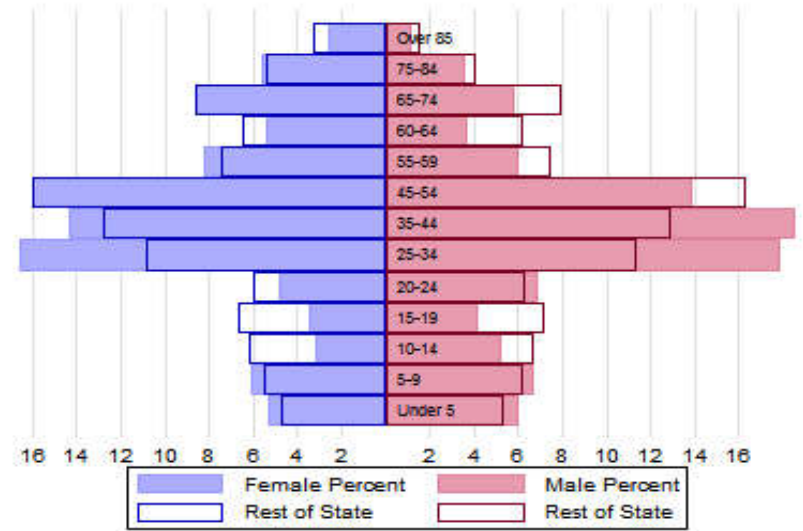
Revere

The Population

City Population 1970 to 2014



Population Distribution by Age Group



Population Distribution by Race and Ethnicity

Subgroups of the population as a percent of the total	2000	2013	Gateway Cities 2013	State 2013
White	84.4	74.4	73.8	89.0
Black	2.9	4.5	8.0	2.8
Asian	4.5	6.5	5.3	4.8
Foreign-born	21.0	31.2	19.9	12.1
Hispanic	9.4	24.4	19.6	4.3
Origin as percent of Hispanic				
Central America	16.9	35.3	15.8	20.3
Dominican Republic	2.8	5.2	14.4	17.9
Mexico	10.6	7.7	5.5	11.4
Puerto Rico	18.0	15.0	45.5	33.6

Recent Demographic Behavior

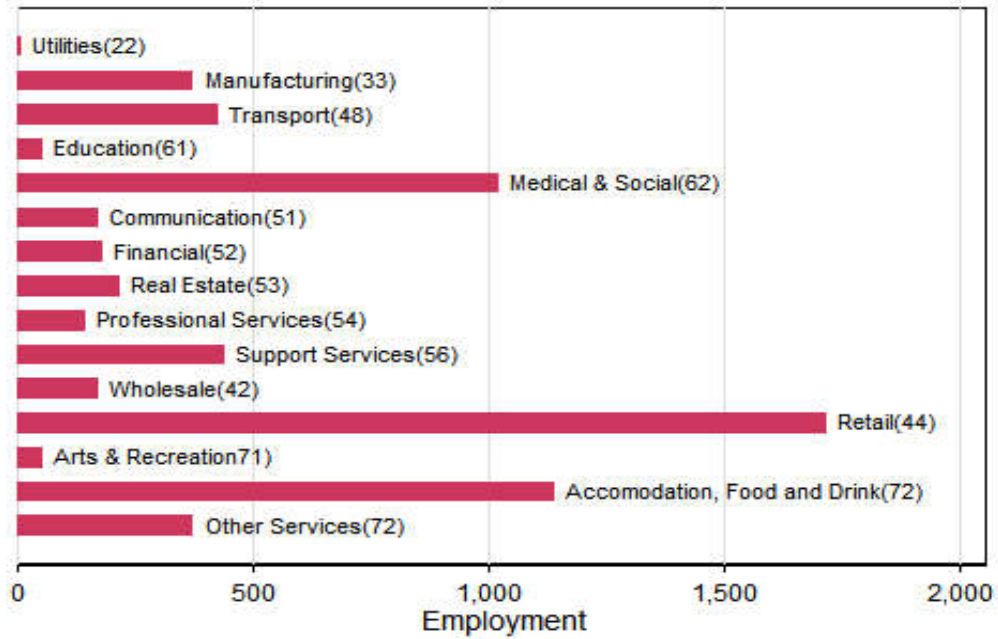
Indicator	Revere	Gateway Cities	State
Birth Rate (per 1,000 females 15-44)	76.9	62.1	52.8
Low birthweight (<2.5 kg. % of births)	8.4	8.0	7.7
Births to teen mothers (15-19 years)†	4.9	6.0	3.8
Birth rate of teen mothers‡	25.8	22.3	12.0
Infant mortality (per 1,000 live births)	2.7	4.9	4.4
Mortality rate (per 100,000 residents)	888	844.9	800.0

†As percent of all births

‡Per 1,000 females aged 15-19 years

The Local Economy

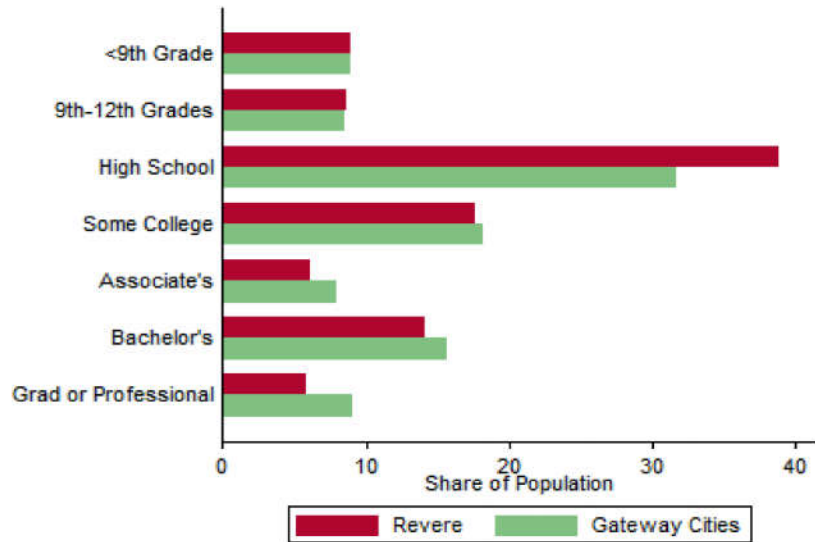
Employment by Major Sectors: 2012 (2-digit NAICS)



The Five Largest Industries: 2012 (4-digit NAICS industries)

Description	NAICS	Employment
Grocery stores	4451	500-999
Restaurants and other eating places	7225	500-999
Skilled Nursing Facilities	6231	250-499
Residential Facilities	6232	100-249
Accommodation	7211	100-249

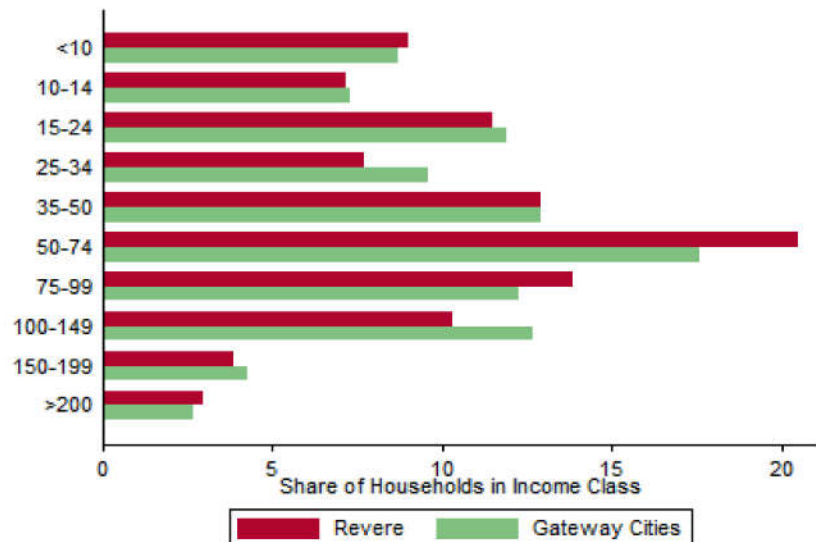
Educational Attainment of the Population Aged 25 and Older



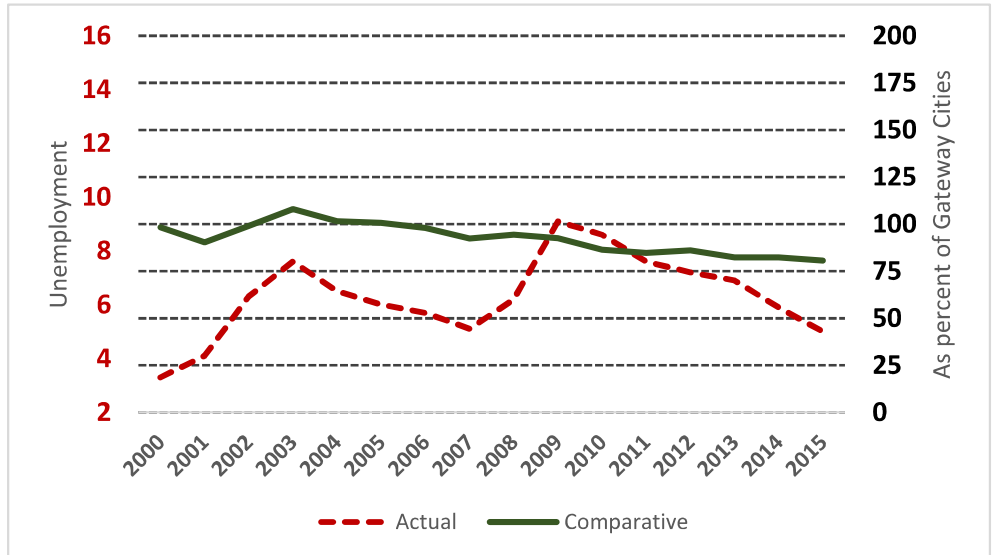
Key Indicators of Income and Commuting

Indicator	Revere	Gateway Cities
Median Family Income (\$)	51,229	60,087
Families below Poverty Line (%)	12.4	14.3
Children < 18 below Poverty Line (%)	18	25.5
Families with Food Assistance (%)	17.6	20.8
Mean Travel Time to Work (Mins.)	30.1	26.4
Commute with Public Transit (%)	25.1	8.6

Distribution of Households by Income Class (in \$1,000)



Unemployment Rate: 2000-2015



Housing

Housing Market Indicators in 2013

Indicator	Revere	Gateway Cities	State
Share owner-occupied	0.52	0.50	0.62
Median Home Value	298,100	252,085	325,800
Average Rent for Studio	747	735	746
Average Rent for One-Bedroom	1147	786	765
Average Rent for Two-Bedroom	1346	1097	926
Average Rent for Three-Bedroom	1279	1182	863
Average Size of Owner-Occupied Households	2.23	2.68	2.25
Average Size of Tenant Households	2.91	2.38	2.70

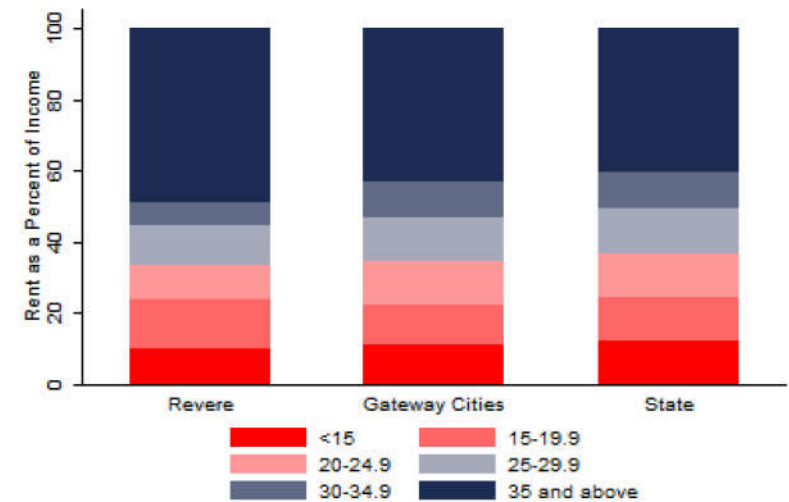
Education

Indicators for 2014

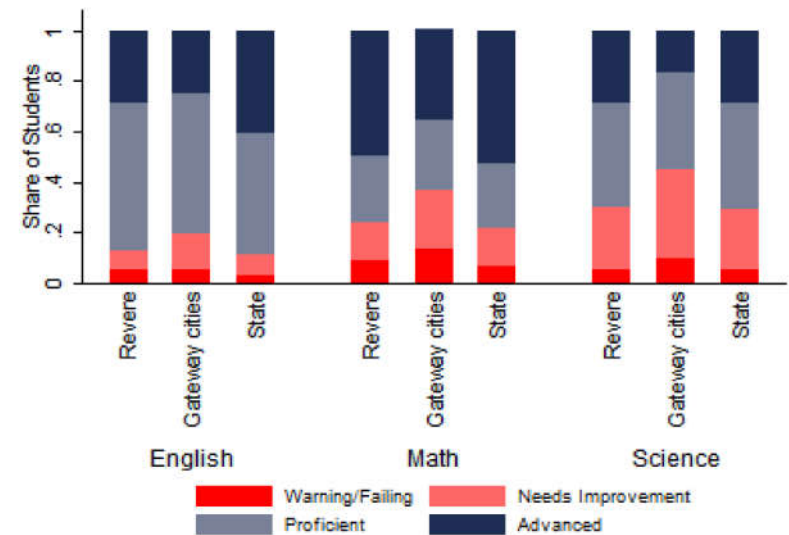
Indicator	Revere	Gateway Cities	State
Average class size	20	18.3	18.1
Percent Proficient or Advanced (English 10th)	87.0	80.3	90.0
Percent Proficient or Advanced (Math 10th)	76.0	63.4	79.0
Student Growth Percentile English (10th)	35.0	43.7	51.0
Student Growth Percentile Math (10th)	51.0	43.4	50.0
Graduates attending college or university†	62.3	69.7	76.6
Male Dropout Rate	13.0	11.8	6.7
Female Dropout Rate	8.4	7.9	4.4
English Language Learners Dropout Rate	12.1	16.8	14.9
Low Income Dropout Rate	11.8	11.8	10.2

†Percent of 2013 class

Housing Affordability



10th Grade MCAS Scores in 2014



Mortality and Health

	Revere	Gateway Cities	State
Lung Cancer Deaths (per 100,000 people) †	73.4	61.3	54.1
Cardiovascular Disease Deaths (per 100,000) †	254.8	254.7	237.4
Opioid Overdose Deaths (per 100,000)‡	40.6	25.5	13.0
HIV/Aids Prevalence Rate (per 100,000 people) 2010†	320.5	317.0	282.3
Admissions to DPH Substance Abuse Programs (per 100,000 people) ‡	2361	2189	1568
Hospital Discharges for Asthma (per 100,000) 2009	142.8	208.8	162.0
Percent overweight or obese children in grade 10 ‡	45.2	38.2	32.3
Percent of population on some form of non-private insurance 2013	35.9	36.1	17.2

†2010

‡2014

Civic Engagement

Voting Behavior in 2014

Indicator	Revere	Gateway Cities	State
Registered voters as percent of population aged 18 and above	60.6	75.1	76.0
Voters in 2014 election as percent of registered voters	44.5	43.5	72.7
Voters in 2014 election as percent of population aged 18 and above	27.0	32.8	55.2

Not-for-Profit Sector

Indicator (in \$ per capita)	Revere	Gateway Cities	State
Assets of Education, Finance, and Medical Non-Profits	124	10,152	27,527
Assets of Other Non-Profits	575	5,530	18,501
Revenue of Education, Finance, and Medical Non-Profits	17	4,361	10,472
Revenue of Other Non-Profits	156	3,050	10,589

Major Nonprofits in Education, Finance and Health Services (in \$millions)

Name	Revenues	Assets	Area
A Womans Concern Inc	0.68	0.67	Healthcare
Revere Firefighters Credit Union	0.24	5.93	Financial

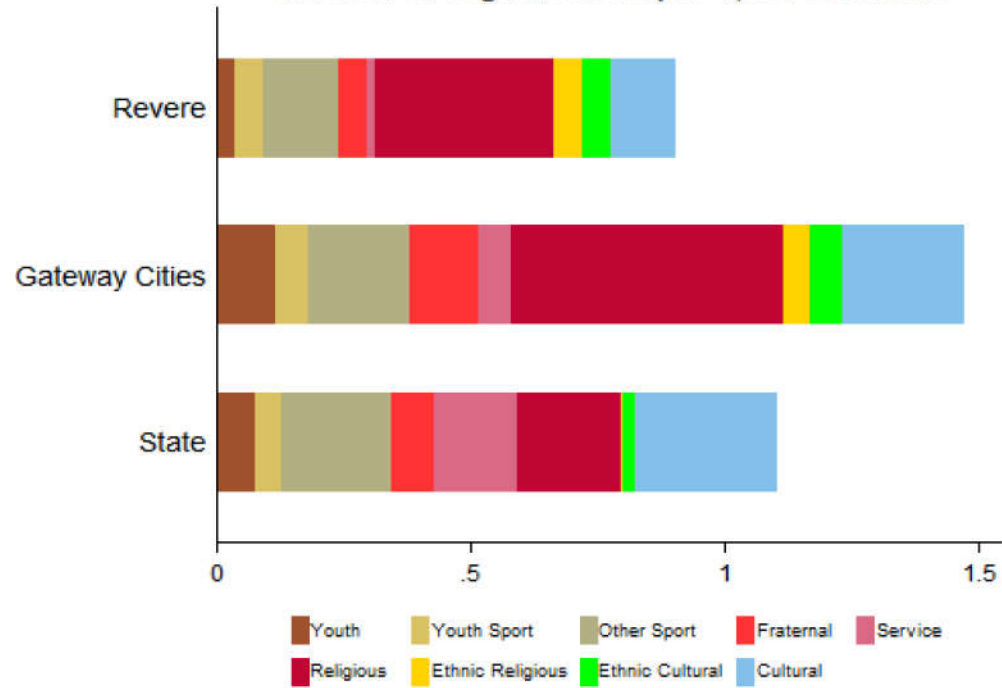
Other Nonprofits (in \$millions)

Name	Revenues	Assets	Area
Hrca Housing for Elderly Inc	4.40	23.02	Housing
Revere Community Media Center	0.41	1.40	Arts & Culture
Revere Lodge No 1272 Loyal Order of Moose	0.39	0.37	Membership Benefit
Revere Beach Partnership Inc	0.39	0.26	Education
National Hbpa Inc	0.26	0.12	Animal
Point of Pines Yacht Club Inc	0.26	0.67	Sports
Veterans of Foreign Wars Department of Massachusetts	0.21	0.16	Public Benefit
Graphic Communications International Union	0.20	0.21	Employment
Benevolent & Protective Order of Elks of the USA	0.17	1.49	Community Improvement
Boston Dialogue Foundation Inc	0.17	1.40	Religion-Related
Tabernaculo Biblico Seguidores De Jesus	0.14	0.00	Religion-Related
Hispanic-American Chamber of Commerce Inc	0.11	0.01	Community Improvement
International Association of Fire Fighters	0.11	0.03	Public Safety
Revere Youth Baseball and Softball	0.11	0.02	Sports
Pop Warner Little Scholars Inc	0.10	0.02	Sports

Nonprofits with a strong associative component

Associative Nonprofits

Number of Organizations per 1,000 residents



Revere