

2016

## Data Profiles - Quincy

Mosakowski Institute  
*Clark University*

John C. Brown  
*Clark University*

Joe Krahe  
*Clark University*

Sarah Philbrick  
*Clark University*

---

### Recommended Citation

Mosakowski Institute; Brown, John C.; Krahe, Joe; and Philbrick, Sarah, "Data Profiles - Quincy" (2016). *Mosakowski Institute for Public Enterprise*. 45.  
<https://commons.clarku.edu/mosakowskiinstitute/45>

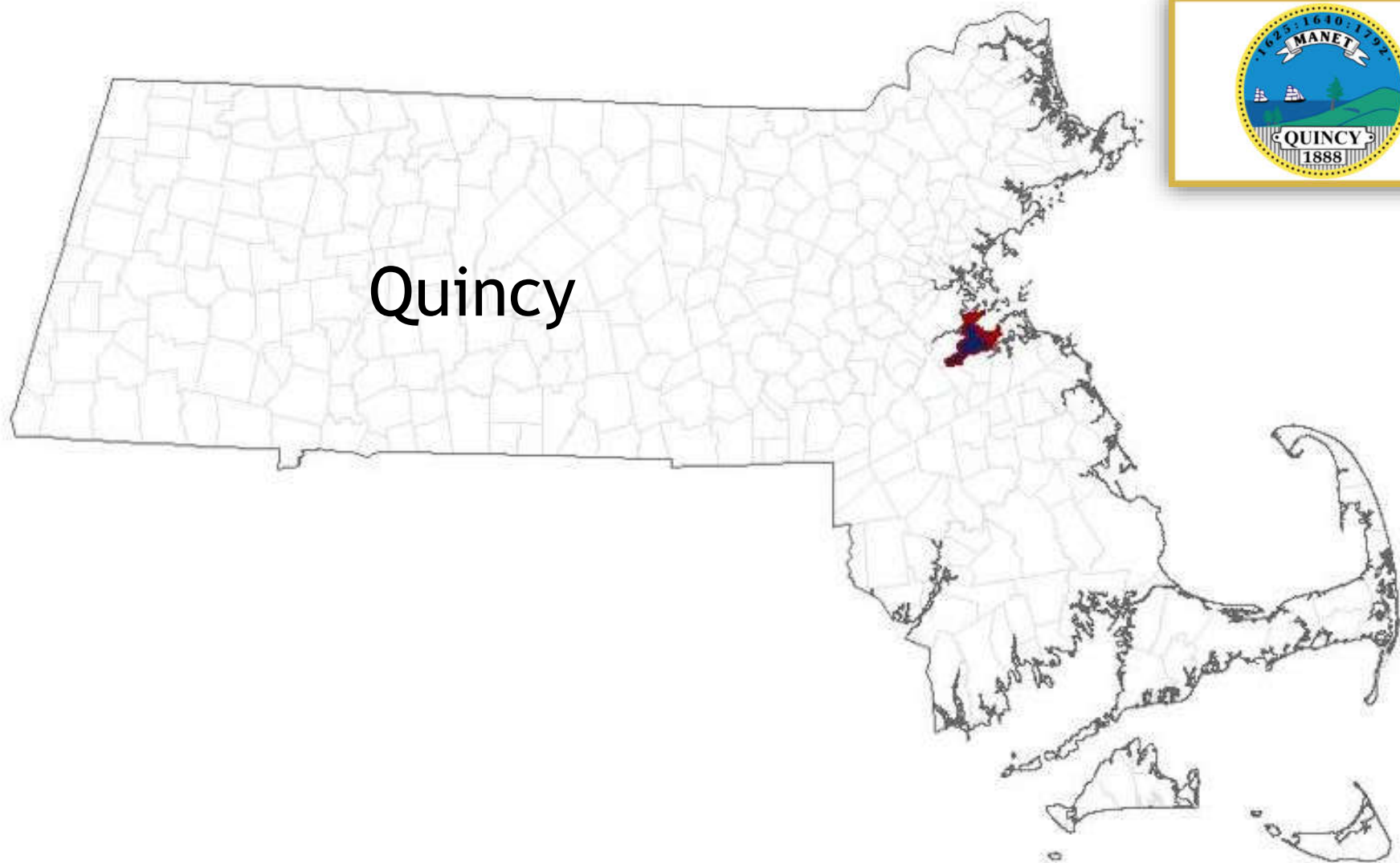
This Article is brought to you for free and open access by the Academic Departments, Centers & Programs at Clark Digital Commons. It has been accepted for inclusion in Mosakowski Institute for Public Enterprise by an authorized administrator of Clark Digital Commons. For more information, please contact [mkrikonis@clarku.edu](mailto:mkrikonis@clarku.edu), [jodolan@clarku.edu](mailto:jodolan@clarku.edu).

---

## Data Profiles - Quincy

**Keywords**

data profiles, quincy, gateway cities, working cities

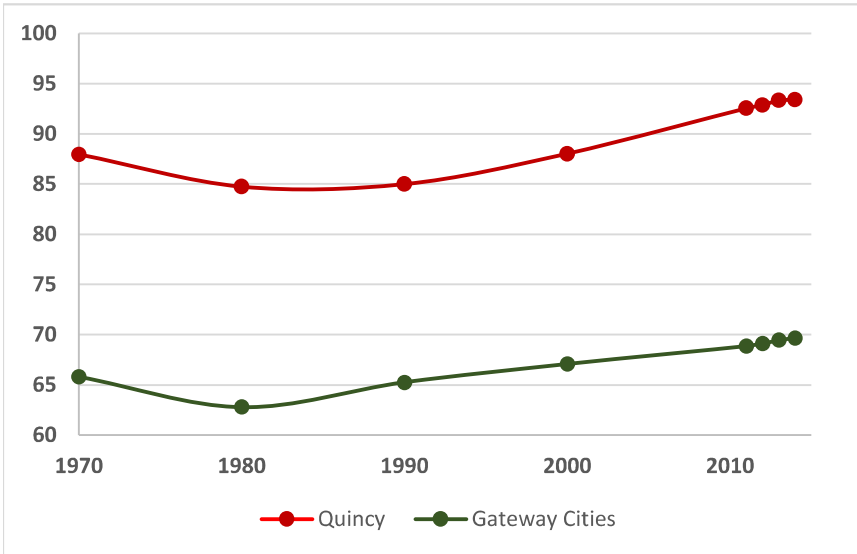


Quincy

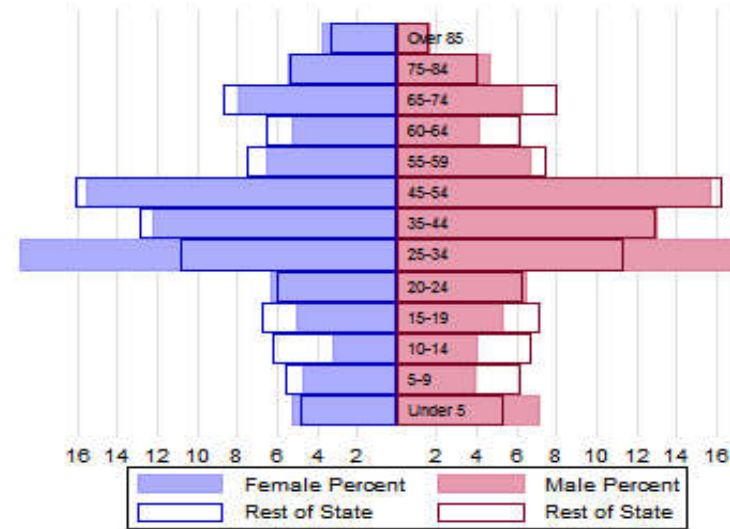


# The Population

## City Population 1970 to 2014



## Population Distribution by Age Group



## Population Distribution by Race and Ethnicity

Subgroups of the population as a percent of the total	2000	2013	Gateway Cities 2013	State 2013
White	79.6	68.6	73.8	89.0
Black	2.2	5.3	8.0	2.8
Asian	15.4	22.8	5.3	4.8
Foreign-born	20.0	27.5	19.9	12.1
Hispanic	2.1	3.3	19.6	4.3
<b>Origin as percent of Hispanic</b>				
Central America	6.3	13.6	15.8	20.3
Dominican Republic	4.3	10.3	14.4	17.9
Mexico	8.9	9.1	5.5	11.4
Puerto Rico	29.9	34.6	45.5	33.6

## Recent Demographic Behavior

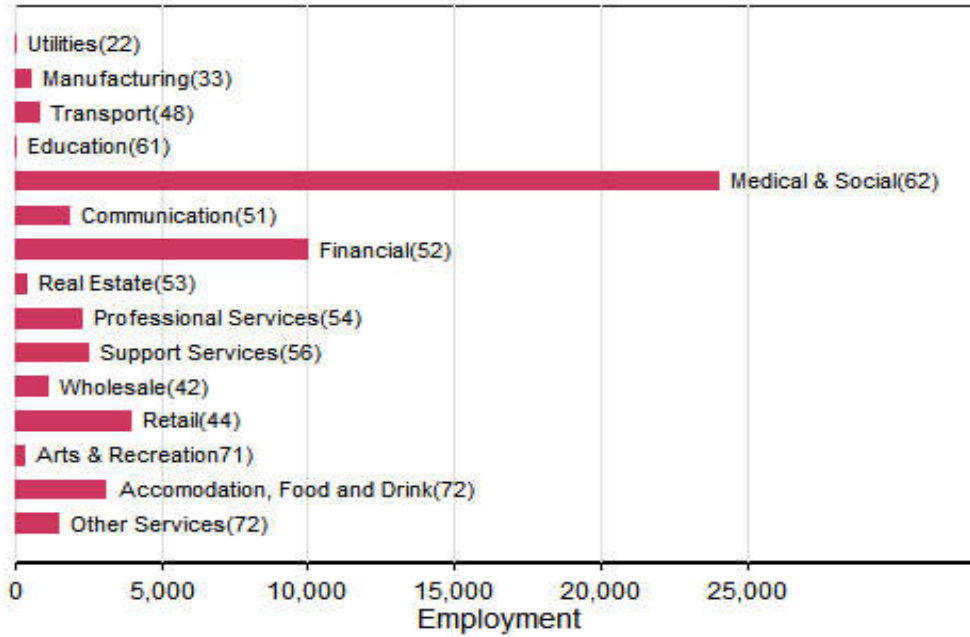
Indicator	Quincy	Gateway Cities	State
Birth Rate (per 1,000 females 15-44)	61.9	62.1	52.8
Low birthweight (<2.5 kg. % of births)	6.4	8.0	7.7
Births to teen mothers (15-19 years)†	1.3	6.0	3.8
Birth rate of teen mothers‡	8.1	22.3	12.0
Infant mortality (per 1,000 live births)	3.3	4.9	4.4
Mortality rate (per 100,000 residents)	937.2	844.9	800.0

†As percent of all births

‡Per 1,000 females aged 15-19 years

# The Local Economy

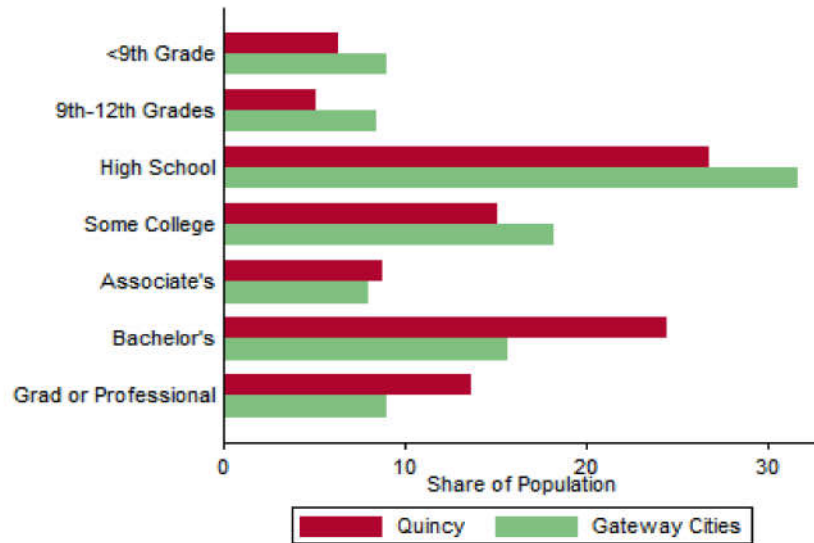
## Employment by Major Sectors: 2012 (2-digit NAICS)



## The Five Largest Industries: 2012 (4-digit NAICS industries)

Description	NAICS	Employment
Individual and Family Services	6241	>10,000
Insurance Carriers	5241	2500-4999
Restaurants	7225	2500-4999
Depository Credit Intermediation	5221	2500-4999
Financial Investment	5239	1000-2499

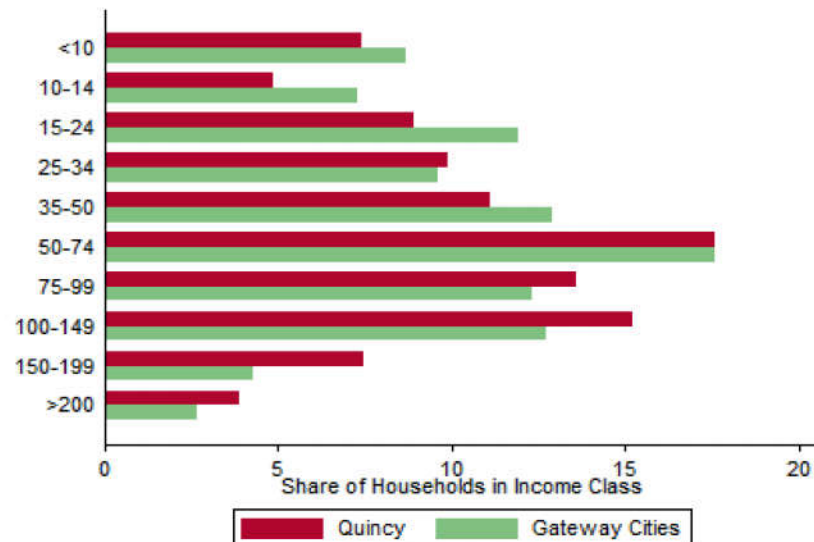
### Educational Attainment of the Population Aged 25 and Older



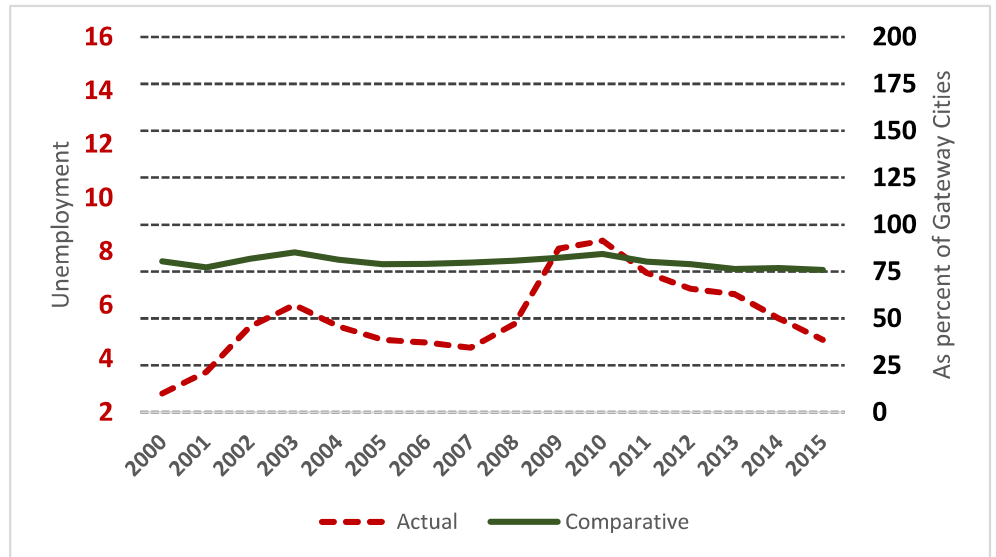
### Key Indicators of Income and Commuting

Indicator	Quincy	Gateway Cities
Median Family Income (\$)	60,795	60,087
Families below Poverty Line (%)	8.9	14.3
Children < 18 below Poverty Line (%)	12.4	25.5
Families with Food Assistance (%)	11.5	20.8
Mean Travel Time to Work (Mins.)	33	26.4
Commute with Public Transit (%)	25	8.6

### Distribution of Households by Income Class (in \$1,000)



### Unemployment Rate: 2000-2015



# Housing

## Housing Market Indicators in 2013

Indicator	Quincy	Gateway Cities	State
Share owner-occupied	0.47	0.50	0.62
Median Home Value	337,000	252,085	325,800
Average Rent for Studio	435	735	746
Average Rent for One-Bedroom	633	786	765
Average Rent for Two-Bedroom	884	1097	926
Average Rent for Three-Bedroom	925	1182	863
Average Size of Owner-Occupied Households	2.01	2.68	2.25
Average Size of Tenant Households	2.66	2.38	2.70

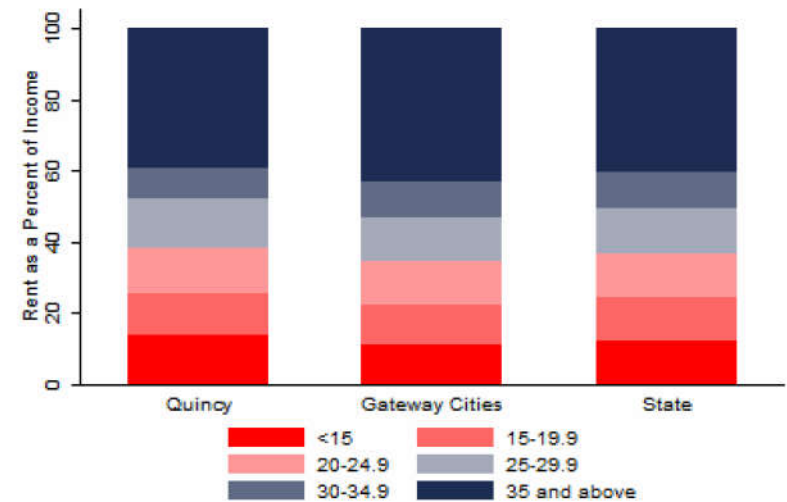
# Education

## Indicators for 2014

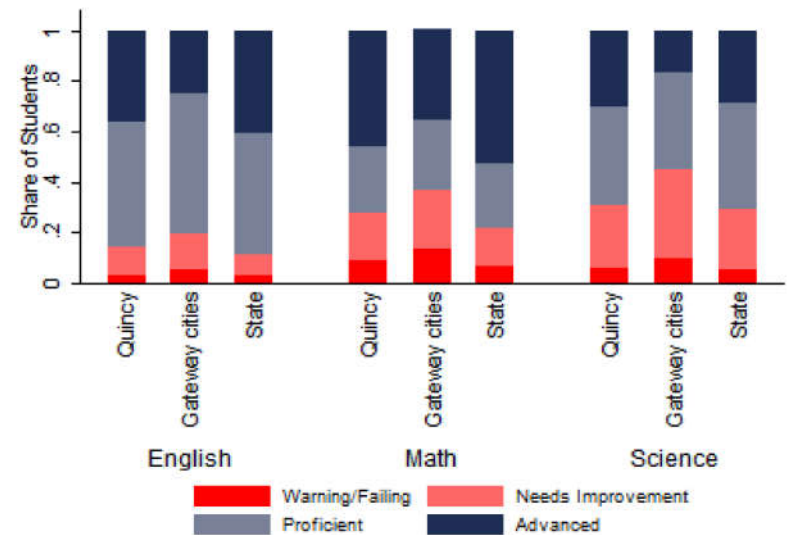
Indicator	Quincy	Gateway Cities	State
Average class size	15.6	18.3	18.1
Percent Proficient or Advanced (English 10th)	86.0	80.3	90.0
Percent Proficient or Advanced (Math 10th)	73.0	63.4	79.0
Student Growth Percentile English (10th)	50.0	43.7	51.0
Student Growth Percentile Math (10th)	56.0	43.4	50.0
Graduates attending college or university†	77.1	69.7	76.6
Male Dropout Rate	6.0	11.8	6.7
Female Dropout Rate	4.9	7.9	4.4
English Language Learners Dropout Rate	5.2	16.8	14.9
Low Income Dropout Rate	6.3	11.8	10.2

†Percent of 2013 class

## Housing Affordability



## 10th Grade MCAS Scores in 2014



## Mortality and Health

	Quincy	Gateway Cities	State
Lung Cancer Deaths (per 100,000 people) †	70.4	61.3	54.1
Cardiovascular Disease Deaths (per 100,000) †	286.0	254.7	237.4
Opioid Overdose Deaths (per 100,000)‡	34.3	25.5	13.0
HIV/Aids Prevalence Rate (per 100,000 people) 2010†	223.3	317.0	282.3
Admissions to DPH Substance Abuse Programs (per 100,000 people) ‡	2380	2189	1568
Hospital Discharges for Asthma (per 100,000) 2009	133.3	208.8	162.0
Percent overweight or obese children in grade 10 ‡	34.9	38.2	32.3
Percent of population on some form of non-private insurance 2013	26.3	36.1	17.2

†2010

‡2014



## Civic Engagement

### Voting Behavior in 2014

Indicator	Quincy	Gateway Cities	State
Registered voters as percent of population aged 18 and above	79.4	75.1	76.0
Voters in 2014 election as percent of registered voters	44.3	43.5	72.7
Voters in 2014 election as percent of population aged 18 and above	35.2	32.8	55.2

### Not-for-Profit Sector

Indicator (in \$ per capita)	Quincy	Gateway Cities	State
Assets of Education, Finance, and Medical Non-Profits	7,127	10,152	27,527
Assets of Other Non-Profits	24,832	5,530	18,501
Revenue of Education, Finance, and Medical Non-Profits	1,623	4,361	10,472
Revenue of Other Non-Profits	23,220	3,050	10,589

### Major Nonprofits in Education, Finance and Health Services (in \$millions)

Name	Revenues	Assets	Area
Granite Medical Group Inc	67.47	27.10	Healthcare
Eastern Nazarene College	23.33	52.13	Education
Alliance Health of Quincy Inc	19.96	26.99	Healthcare
Quincy Credit Union	14.64	456.50	Financial
Manet Community Health Center Inc	12.58	9.40	Healthcare
William B Rice Eventide Home	6.77	22.51	Healthcare
Nage-Seiu Local 5000 Trial Court of Mass Health and Welfare Fund	2.11	2.53	Healthcare
South Cove Manor Nursing and Rehabilitation Center Inc	1.88	22.26	Healthcare
The Woodward School for Girls Inc	1.84	2.93	Education
South Cove Nursing Facilities Foundation Inc	0.68	11.03	Healthcare

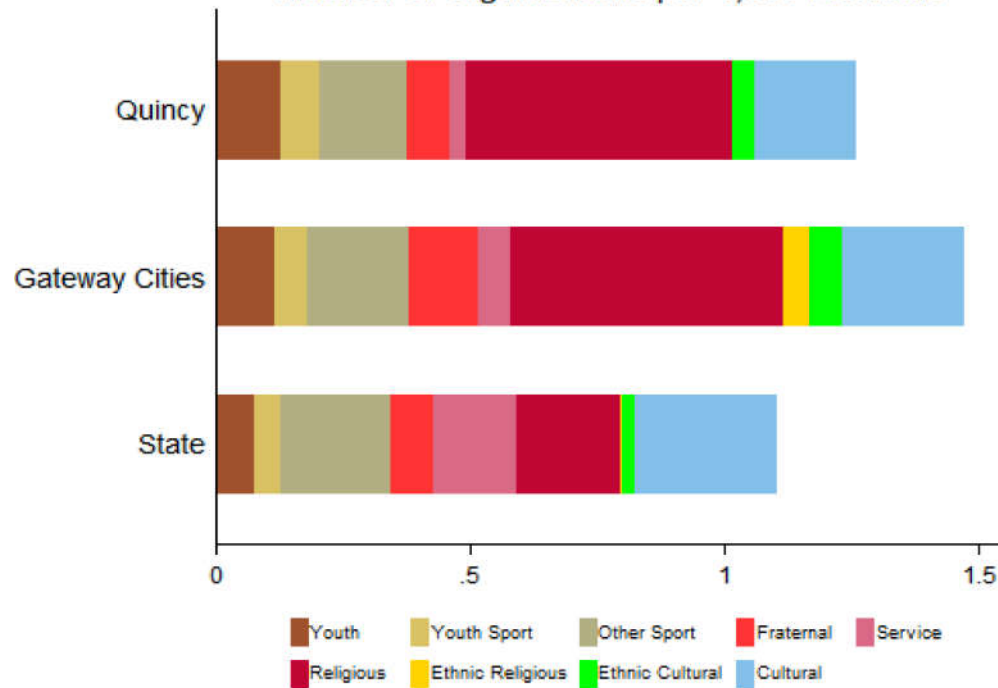
**Other Nonprofits** (in \$millions)

Name	Revenues	Assets	Area
National Fire Protection Association	82.42	296.94	Public Safety
South Shore Mental Health Center Inc	34.73	10.26	Mental Health
National Association of Government Employees	22.27	6.12	Employment
Quincy Community Action Programs Inc	18.48	13.63	Community Improvement
National Organization for Rare Disorders Inc	16.52	11.76	Diseases
Nellie Mae Education Foundation Inc	16.42	543.29	Education
Bay State Community Services Inc	15.90	2.90	Mental Health
South Shore YMCA	8.40	81.95	Human Services
Quincy Point Congregational Church Homes Inc	4.83	5.97	Religion-Related
Entrepreneurial Ventures in Education	4.03	0.48	Education
Good Sports Inc	3.73	2.33	Youth Development
Neighborhood Housing Services of the South Shore Inc	3.21	16.95	Housing
National Fire Protection Research Foundation	2.21	13.83	Public Safety
Wollaston Lutheran Housing Inc	2.17	6.33	Housing
Wollaston Lutheran Church Apartments Inc	2.07	4.08	Religion-Related

Nonprofits with a strong associative component

## Associative Nonprofits

Number of Organizations per 1,000 residents



Quincy