

2016

Data Profiles - Pittsfield

Mosakowski Institute
Clark University

John C. Brown
Clark University

Joe Krahe
Clark University

Sarah Philbrick
Clark University

Recommended Citation

Mosakowski Institute; Brown, John C.; Krahe, Joe; and Philbrick, Sarah, "Data Profiles - Pittsfield" (2016). *Mosakowski Institute for Public Enterprise*. 46.

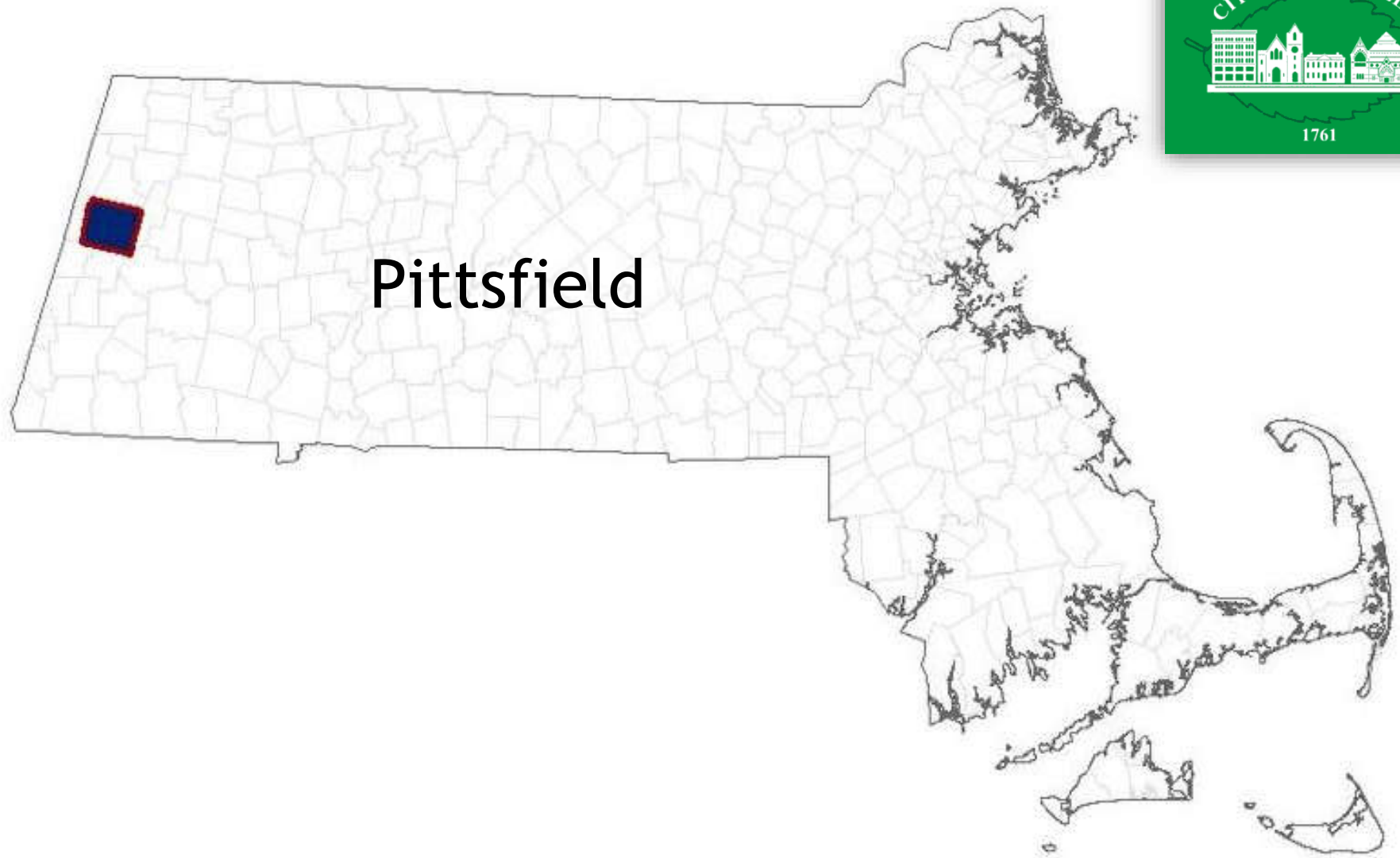
<https://commons.clarku.edu/mosakowskiinstitute/46>

This Article is brought to you for free and open access by the Academic Departments, Centers & Programs at Clark Digital Commons. It has been accepted for inclusion in Mosakowski Institute for Public Enterprise by an authorized administrator of Clark Digital Commons. For more information, please contact mkrikonis@clarku.edu, jodolan@clarku.edu.

Data Profiles - Pittsfield

Keywords

data profiles, pittsfield, gateway cities, working cities

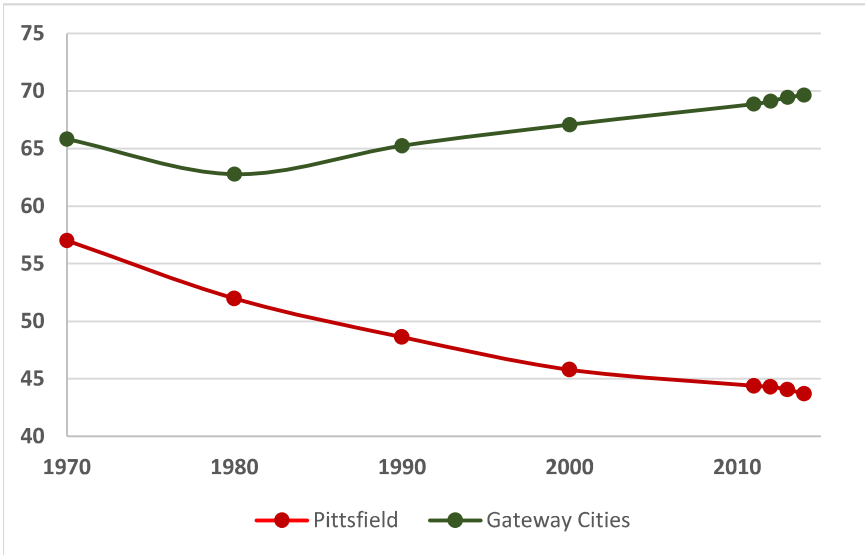


Pittsfield

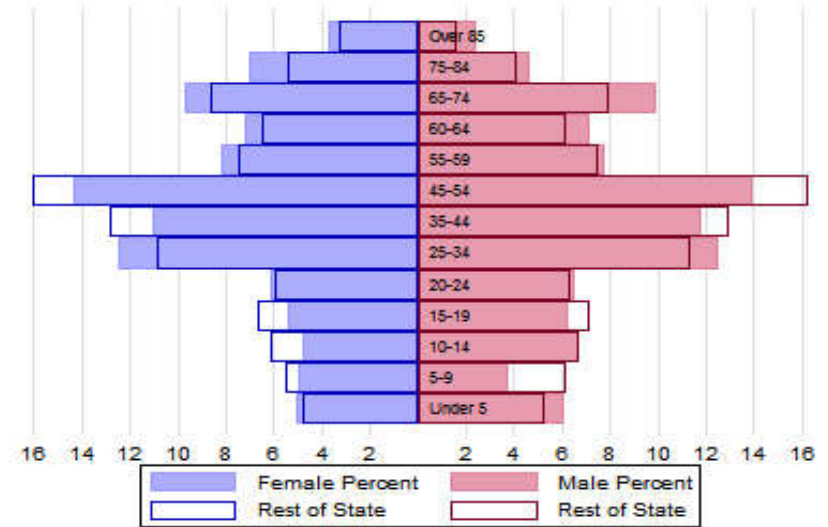


The Population

City Population 1970 to 2014



Population Distribution by Age Group



Population Distribution by Race and Ethnicity

Subgroups of the population as a percent of the total	2000	2013	Gateway Cities 2013	State 2013
White	92.6	89.2	73.8	89.0
Black	3.7	5.4	8.0	2.8
Asian	1.2	1.0	5.3	4.8
Foreign-born	3.9	5.4	19.9	12.1
Hispanic	2.0	5.0	19.6	4.3
Origin as percent of Hispanic				
Central America	6.2	12.0	15.8	20.3
Dominican Republic	0.6	3.1	14.4	17.9
Mexico	12.3	14.2	5.5	11.4
Puerto Rico	45.1	39.6	45.5	33.6

Recent Demographic Behavior

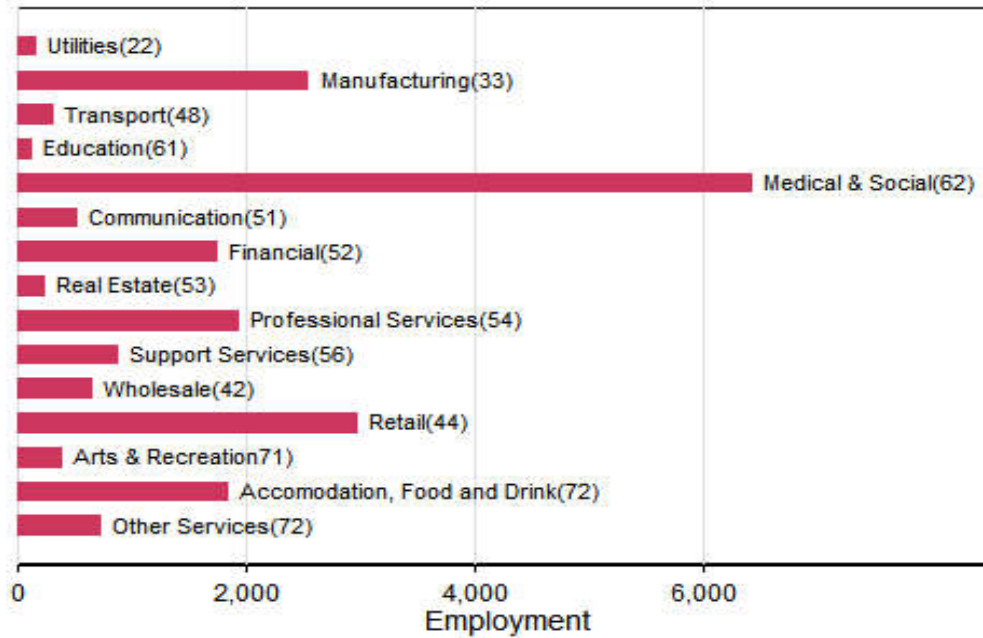
Indicator	Pittsfield	Gateway Cities	State
Birth Rate (per 1,000 females 15-44)	55.0	62.1	52.8
Low birthweight (<2.5 kg. % of births)	7.4	8.0	7.7
Births to teen mothers (15-19 years)†	8.3	6.0	3.8
Birth rate of teen mothers‡	27.6	22.3	12.0
Infant mortality (per 1,000 live births)	11.8	4.9	4.4
Mortality rate (per 100,000 residents)	1073	844.9	800.0

†As percent of all births

‡Per 1,000 females aged 15-19 years

The Local Economy

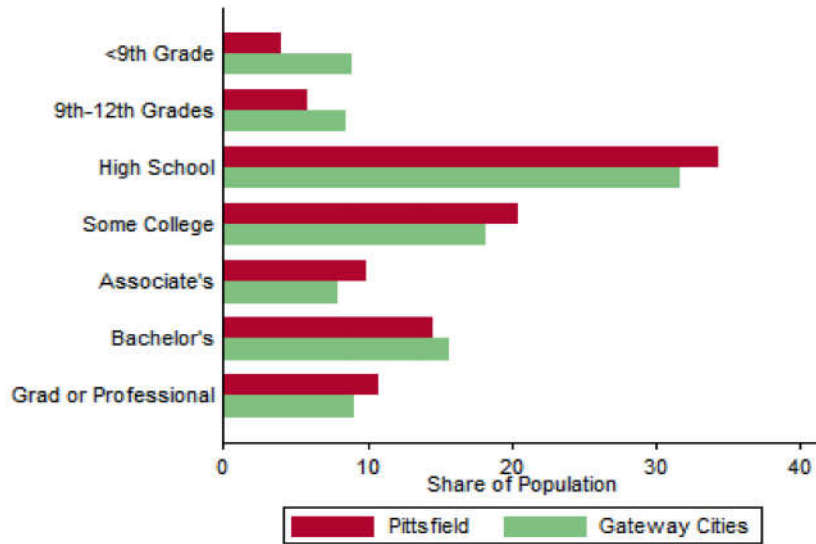
Employment by Major Sectors: 2012 (2-digit NAICS)



The Five Largest Industries: 2012 (4-digit NAICS industries)

Description	NAICS	Employment
General Hospitals	6221	1000-2499
Computer System Design	5415	1000-2499
Restaurants	7225	1000-2499
Skilled Nursing Facilities	6231	500-999
Grocery Stores	4451	500-999

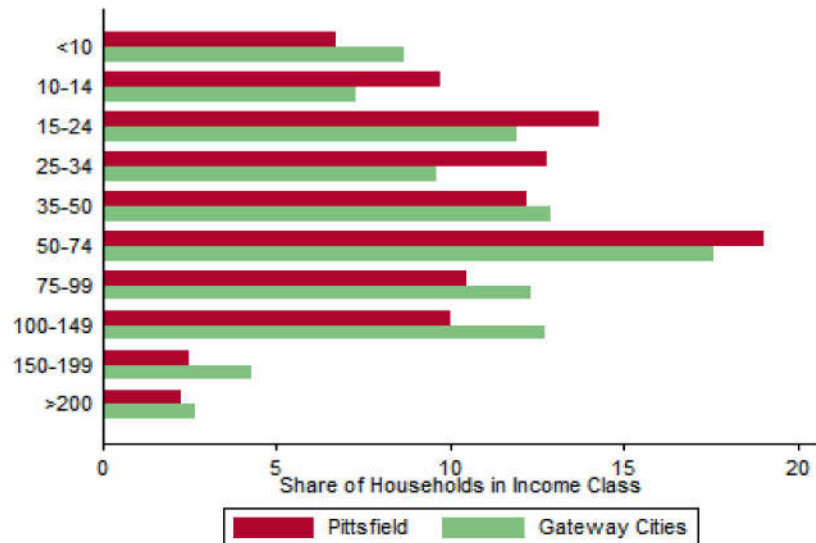
Educational Attainment of the Population Aged 25 and Older



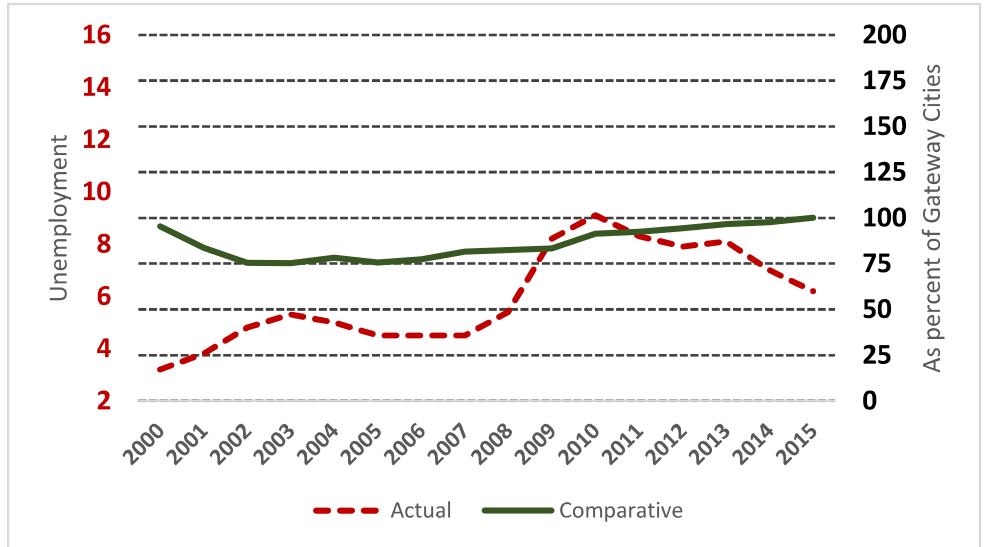
Key Indicators of Income and Commuting

Indicator	Pittsfield	Gateway Cities
Median Family Income (\$)	42,460	60,087
Families below Poverty Line (%)	15.4	14.3
Children < 18 below Poverty Line (%)	31	25.5
Families with Food Assistance (%)	19.8	20.8
Mean Travel Time to Work (Mins.)	18.3	26.4
Commute with Public Transit (%)	1.3	8.6

Distribution of Households by Income Class (in \$1,000)



Unemployment Rate: 2000-2015



Housing

Housing Market Indicators in 2013

Indicator	Pittsfield	Gateway Cities	State
Share owner-occupied	0.62	0.50	0.62
Median Home Value	172,600	252,085	325,800
Average Rent for Studio	856	735	746
Average Rent for One-Bedroom	628	786	765
Average Rent for Two-Bedroom	809	1097	926
Average Rent for Three-Bedroom	917	1182	863
Average Size of Owner-Occupied Households	2.08	2.68	2.25
Average Size of Tenant Households	2.29	2.38	2.70

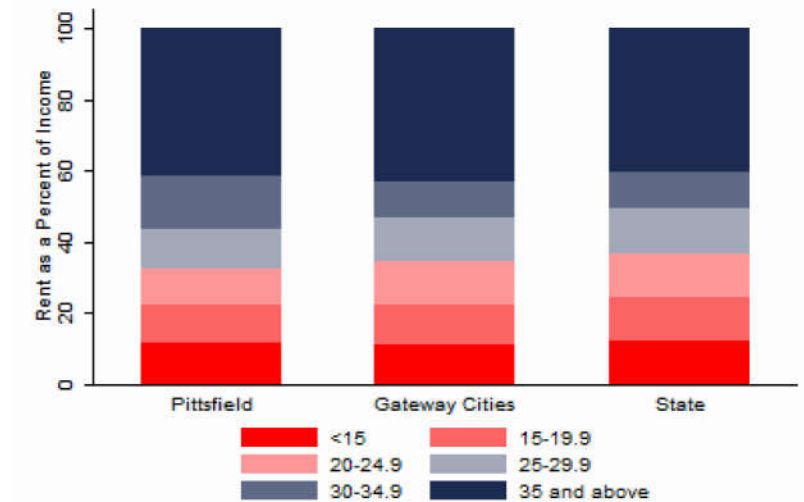
Education

Indicators for 2014

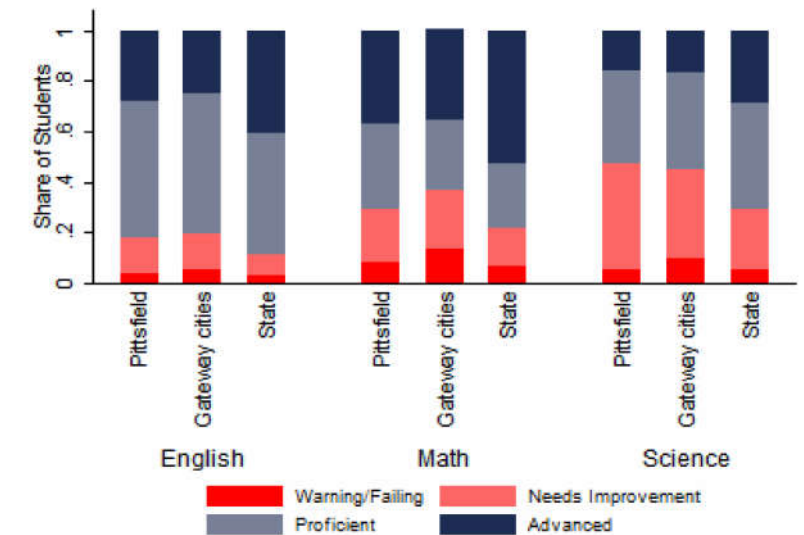
Indicator	Pittsfield	Gateway Cities	State
Average class size	15.6	18.3	18.1
Percent Proficient or Advanced (English 10th)	82.0	80.3	90.0
Percent Proficient or Advanced (Math 10th)	71.0	63.4	79.0
Student Growth Percentile English (10th)	31.0	43.7	51.0
Student Growth Percentile Math (10th)	27.0	43.4	50.0
Graduates attending college or university†	69.6	69.7	76.6
Male Dropout Rate	7.5	11.8	6.7
Female Dropout Rate	5.4	7.9	4.4
English Language Learners Dropout Rate	0.0	16.8	14.9
Low Income Dropout Rate	10.7	11.8	10.2

†Percent of 2013 class

Housing Affordability



10th Grade MCAS Scores in 2014



Mortality and Health

	Pittsfield	Gateway Cities	State
Lung Cancer Deaths (per 100,000 people) †	82.9	61.3	54.1
Cardiovascular Disease Deaths (per 100,000) †	302.4	254.7	237.4
Opioid Overdose Deaths (per 100,000)‡	29.8	25.5	13.0
HIV/Aids Prevalence Rate (per 100,000 people) 2010†	147.9	317.0	282.3
Admissions to DPH Substance Abuse Programs (per 100,000 people) ‡	4555	2189	1568
Hospital Discharges for Asthma (per 100,000) 2009	129.9	208.8	162.0
Percent overweight or obese children in grade 10 ‡	32.7	38.2	32.3
Percent of population on some form of non-private insurance 2013	34.1	36.1	17.2

†2010

‡2014

Civic Engagement

Voting Behavior in 2014

Indicator	Pittsfield	Gateway Cities	State
Registered voters as percent of population aged 18 and above	79.9	75.1	76.0
Voters in 2014 election as percent of registered voters	40.6	43.5	72.7
Voters in 2014 election as percent of population aged 18 and above	32.4	32.8	55.2

Not-for-Profit Sector

Indicator (in \$ per capita)	Pittsfield	Gateway Cities	State
Assets of Education, Finance, and Medical Non-Profits	12,856	10,152	27,527
Assets of Other Non-Profits	3,298	5,530	18,501
Revenue of Education, Finance, and Medical Non-Profits	8,325	4,361	10,472
Revenue of Other Non-Profits	2,666	3,050	10,589

Major Nonprofits in Education, Finance and Health Services (in \$millions)

Name	Revenues	Assets	Area
Berkshire Medical Center Inc	365.39	470.44	Healthcare
Fairview Hospital	49.59	37.29	Healthcare
Bhs Management Services Inc	49.43	7.01	Healthcare
Hillcrest Extended Care Services Inc	22.89	35.89	Healthcare
Miss Halls School Inc	19.87	46.16	Education
Berkshire Faculty Services Inc	18.12	3.14	Healthcare
Berkshire Retirement Community Inc	15.65	53.68	Healthcare
Willowood of Williamstown Inc	14.23	24.05	Healthcare
Berkshire Pennsylvania Inc	14.16	15.63	Healthcare
Bourne Management Systems Inc	13.16	4.82	Healthcare

Other Nonprofits (in \$millions)

Name	Revenues	Assets	Area
Hillcrest Educational Centers Inc	27.42	25.59	Education
Berkshire County Arc Inc	26.18	5.85	Human Services
Brien Center for Mental Health & Substance Abuse Services	21.63	8.67	Mental Health
Elder Services of Berkshire County Inc	12.42	4.89	Human Services
Berkshire Community Action Council Inc	10.43	1.52	Community Improvement
Hospice Care in the Berkshires Inc	10.33	6.84	Human Services
Berkshire Children and Families Inc	7.41	2.44	Human Services
Center for Ecotechnology Inc	6.47	5.13	Environment
Barrington Stage Co Inc	4.18	6.17	Arts & Culture
Berkshire Retirement Home Inc	3.95	9.66	Housing
Berkshire County Head Start Child Development Program Inc	3.69	1.06	Education
United Cerebral Palsy Association of Berkshire County Inc	3.24	1.88	Diseases
Berkshire Fund Inc	3.17	12.28	Housing
Trustees of The Berkshire Museum	3.10	19.73	Arts & Culture
Boys & Girls Club of Pittsfield	3.09	22.65	Youth Development

Nonprofits with a strong associative component

Associative Nonprofits

Number of Organizations per 1,000 residents

