

2016

Data Profiles - Peabody

Mosakowski Institute
Clark University

John C. Brown
Clark University

Joe Krahe
Clark University

Sarah Philbrick
Clark University

Recommended Citation

Mosakowski Institute; Brown, John C.; Krahe, Joe; and Philbrick, Sarah, "Data Profiles - Peabody" (2016). *Mosakowski Institute for Public Enterprise*. 47.

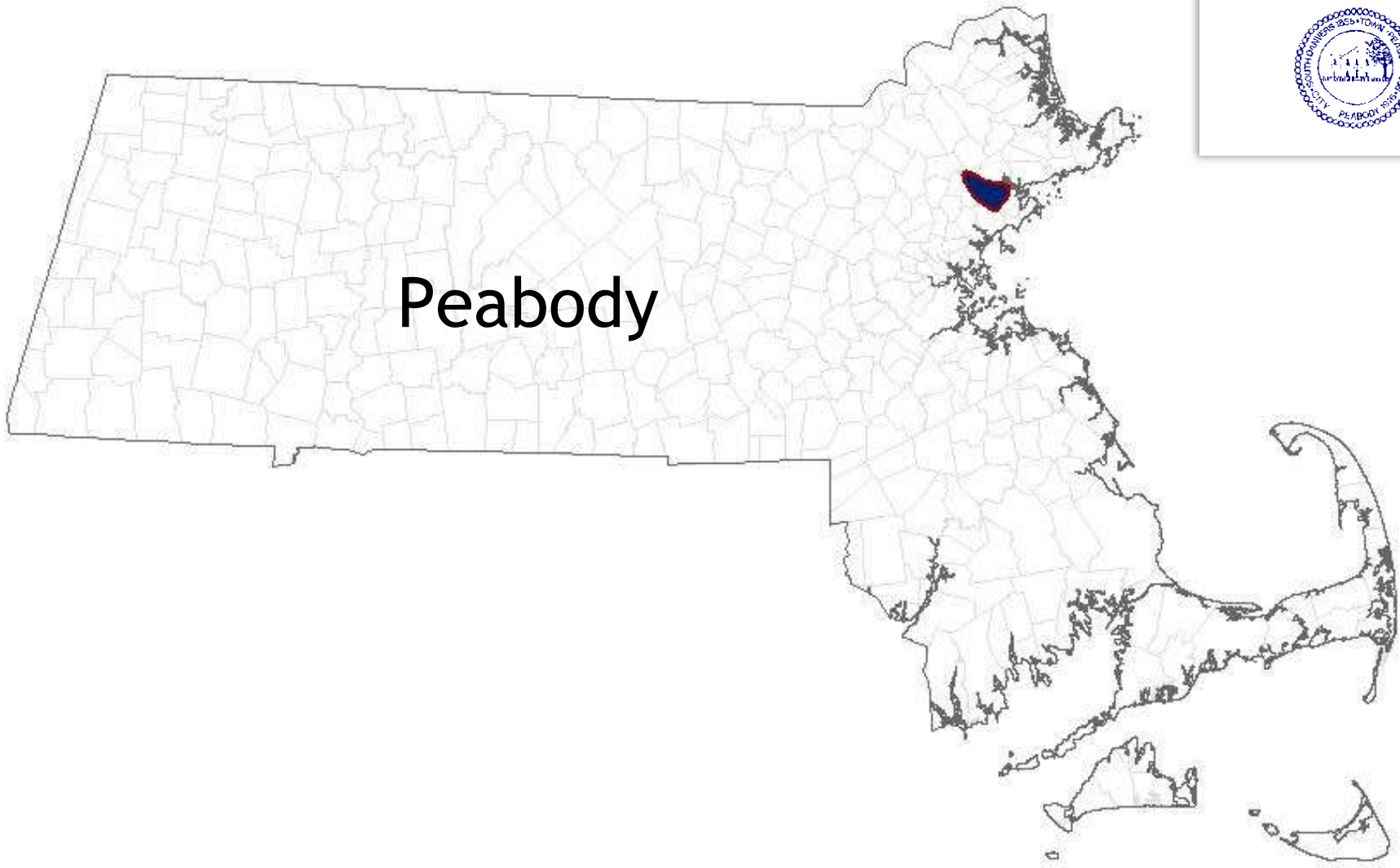
<https://commons.clarku.edu/mosakowskiinstitute/47>

This Article is brought to you for free and open access by the Academic Departments, Centers & Programs at Clark Digital Commons. It has been accepted for inclusion in Mosakowski Institute for Public Enterprise by an authorized administrator of Clark Digital Commons. For more information, please contact mkrikonis@clarku.edu, jodolan@clarku.edu.

Data Profiles - Peabody

Keywords

data profiles, peabody, gateway cities, working cities

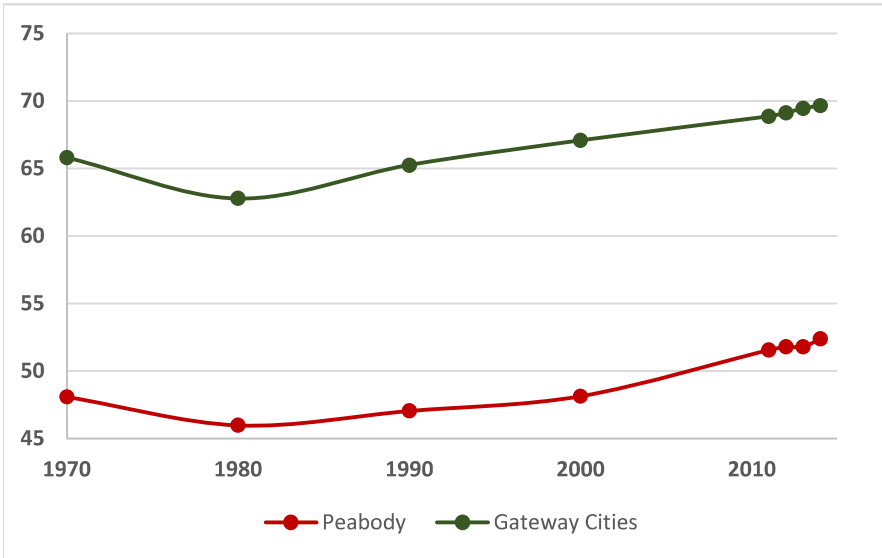


Peabody

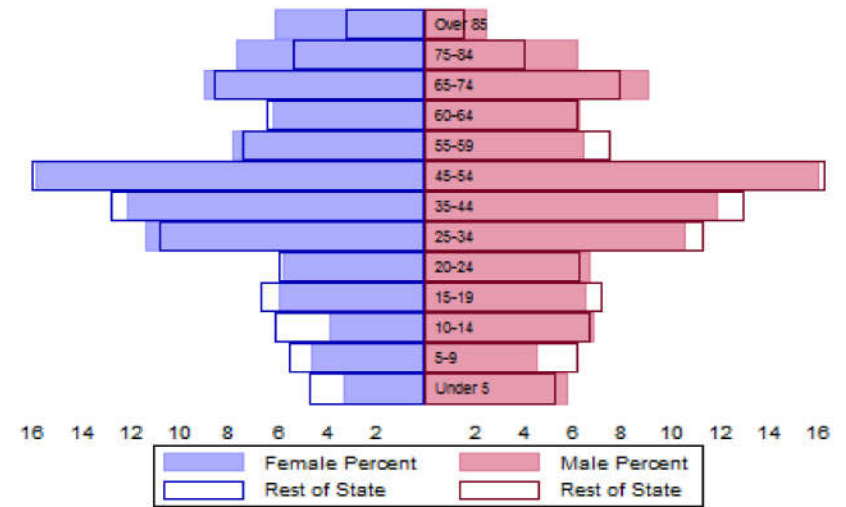


The Population

City Population 1970 to 2014



Population Distribution by Age Group



Population Distribution by Race and Ethnicity

Subgroups of the population as a percent of the total	2000	2013	Gateway Cities 2013	State 2013
White	93.9	85.8	73.8	89.0
Black	1.0	4.3	8.0	2.8
Asian	0.1	3.6	5.3	4.8
Foreign-born	11.2	15.2	19.9	12.1
Hispanic	3.4	7.5	19.6	4.3
Origin as percent of Hispanic				
Central America	4.3	7.7	15.8	20.3
Dominican Republic	38.7	36.9	14.4	17.9
Mexico	4.2	8.3	5.5	11.4
Puerto Rico	17.0	37.8	45.5	33.6

Recent Demographic Behavior

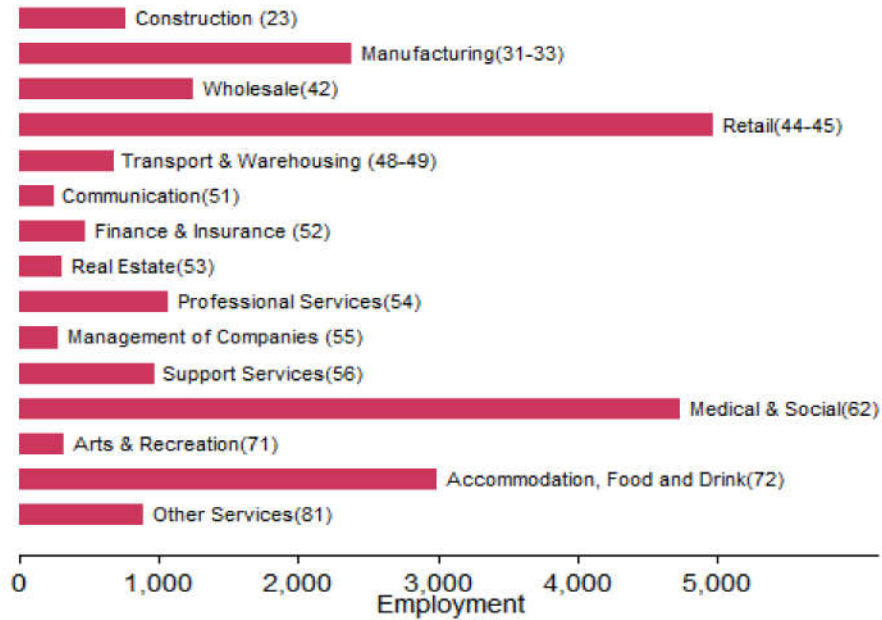
Indicator	Peabody	Gateway Cities	State
Birth Rate (per 1,000 females 15-44)	51.1	62.1	52.8
Low birthweight (<2.5 kg. % of births)	6.7	8.0	7.7
Births to teen mothers (15-19 years)†	2.3	6.0	3.8
Birth rate of teen mothers‡	6.8	22.3	12.0
Infant mortality (per 1,000 live births)	-	4.9	4.4
Mortality rate (per 100,000 residents)	634.5	844.9	800.0

†As percent of all births

‡Per 1,000 females aged 15-19 years

The Local Economy

Employment by Major Sectors: 2012 (2-digit NAICS)



The Five Largest Industries: 2012 (4-digit NAICS industries)

Description	NAICS	Employment
Restaurants and Other Eating Places	7225	2500-4999
Community Care Facility for the Elderly	6233	1000-2499
Electronic Instrument Manufacturing	3345	500-999
Department Stores	4521	500-999
Clothing Stores	4481	500-999

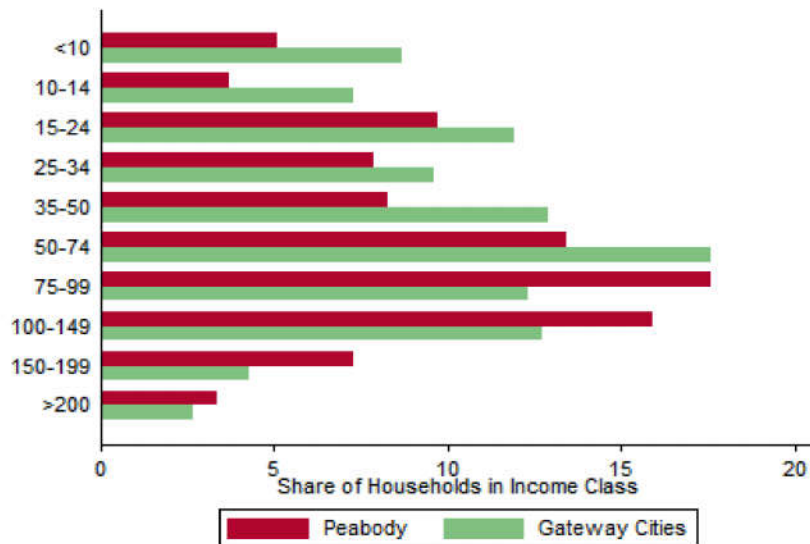
Educational Attainment of the Population Aged 25 and Older



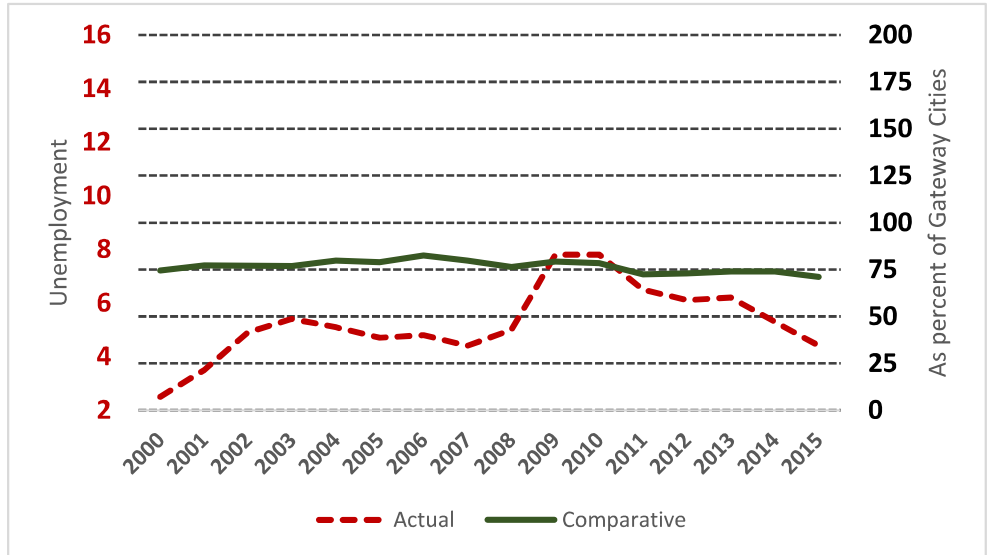
Key Indicators of Income and Commuting

Indicator	Peabody	Gateway Cities
Median Family Income (\$)	84,011	60,087
Families below Poverty Line (%)	4.7	14.3
Children < 18 below Poverty Line (%)	7.1	25.5
Families with Food Assistance (%)	11.1	20.8
Mean Travel Time to Work (Mins.)	25.3	26.4
Commute with Public Transit (%)	2.2	8.6

Distribution of Households by Income Class (in \$1,000)



Unemployment Rate: 2000-2015



Housing

Housing Market Indicators in 2013

Indicator	Peabody	Gateway Cities	State
Share owner-occupied	0.61	0.50	0.62
Median Home Value	325,400	252,085	325,800
Average Rent for Studio	856	735	746
Average Rent for One-Bedroom	1129	786	765
Average Rent for Two-Bedroom	1354	1097	926
Average Rent for Three-Bedroom	1243	1182	863
Average Size of Owner-Occupied Households	2.54	2.68	2.25
Average Size of Tenant Households	2.12	2.38	2.70

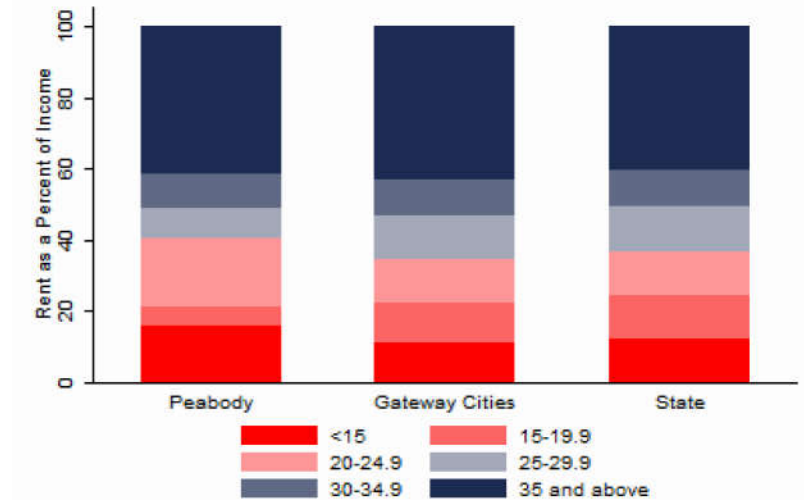
Education

Indicators for 2014

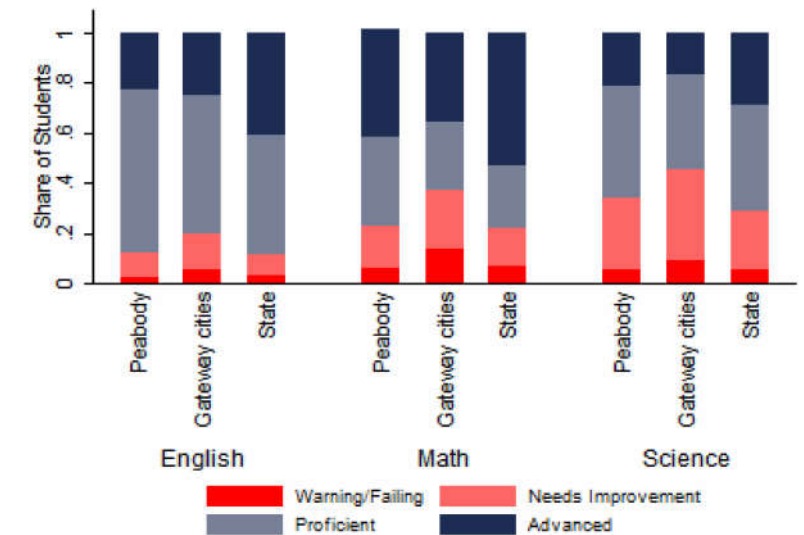
Indicator	Peabody	Gateway Cities	State
Average class size	17.8	18.3	18.1
Percent Proficient or Advanced (English 10th)	88.0	80.3	90.0
Percent Proficient or Advanced (Math 10th)	77.0	63.4	79.0
Student Growth Percentile English (10th)	27.0	43.7	51.0
Student Growth Percentile Math (10th)	41.0	43.4	50.0
Graduates attending college or university†	71.7	69.7	76.6
Male Dropout Rate	1.8	11.8	6.7
Female Dropout Rate	1.0	7.9	4.4
English Language Learners Dropout Rate	3.1	16.8	14.9
Low Income Dropout Rate	2.8	11.8	10.2

†Percent of 2013 class

Housing Affordability



10th Grade MCAS Scores in 2014



Mortality and Health

	Peabody	Gateway Cities	State
Lung Cancer Deaths (per 100,000 people) †	69.7	61.3	54.1
Cardiovascular Disease Deaths (per 100,000) †	162.8	254.7	237.4
Opioid Overdose Deaths (per 100,000)‡	21.0	25.5	13.0
HIV/Aids Prevalence Rate (per 100,000 people) 2010†	100.0	317.0	282.3
Admissions to DPH Substance Abuse Programs (per 100,000 people) ‡	1686	2189	1568
Hospital Discharges for Asthma (per 100,000) 2009	118.0	208.8	162.0
Percent overweight or obese children in grade 10 ‡	45.2	38.2	32.3
Percent of population on some form of non-private insurance 2013	23.6	36.1	17.2

†2010

‡2014

Civic Engagement

Voting Behavior in 2014

Indicator	Peabody	Gateway Cities	State
Registered voters as percent of population aged 18 and above	84.8	75.1	76.0
Voters in 2014 election as percent of registered voters	54.5	43.5	72.7
Voters in 2014 election as percent of population aged 18 and above	46.2	32.8	55.2

Not-for-Profit Sector

Indicator (in \$ per capita)	Peabody	Gateway Cities	State
Assets of Education, Finance, and Medical Non-Profits	2,288	10,152	27,527
Assets of Other Non-Profits	3,937	5,530	18,501
Revenue of Education, Finance, and Medical Non-Profits	381	4,361	10,472
Revenue of Other Non-Profits	3,582	3,050	10,589

Major Nonprofits in Education, Finance and Health Services (in \$millions)

Name	Revenues	Assets	Area
Jewish Rehabilitation Center for Aged of the North Shore, Inc	17.11	42.22	Healthcare
Luso-American Credit Union	2.54	76.27	Financial
Brian D Silber Memorial Fund	0.09	0.02	Healthcare

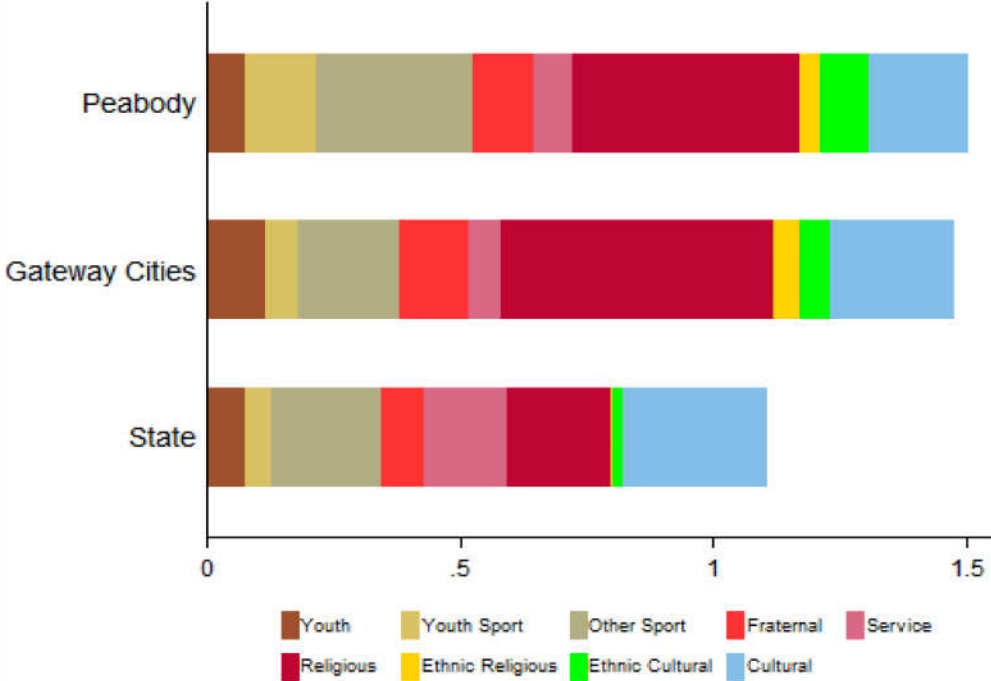
Other Nonprofits (in \$millions)

Name	Revenues	Assets	Area
North American Family Institute Inc	21.63	8.46	Human Services
YMCA of Metro North Inc	14.88	20.04	Human Services
North Shore Community Action Programs Inc	8.42	1.37	Human Services
Aviv Assisted Living Inc	7.74	18.31	Human Services
Salem Country Club	6.56	14.64	Sports
Aviv Centers for Living Inc	3.37	0.16	Housing
Covenant Christian Academy Inc	2.92	7.95	Education
Progeria Research Foundation Inc	2.72	4.23	Medical Research
Citizens for Adequate Housing Inc	1.84	2.60	Housing
The Rusty Staub Foundation Inc	1.38	0.38	Philanthropy
Aviv Foundation Inc	0.66	11.18	Human Services
North Suburban Jewish Community Center Inc	0.65	0.33	Human Services
Peabody Historical Society	0.61	2.61	Arts&Culture
Peabody Access Telecommunications Inc	0.58	1.51	Public Benefit
Express Yourself Inc	0.50	0.05	Arts&Culture
American Federation of Teachers	0.47	0.06	Employment

Nonprofits with a strong associative component

Associative Nonprofits

Number of Organizations per 1,000 residents



Peabody