

2016

## Data Profiles - Methuen

Mosakowski Institute  
*Clark University*

John C. Brown  
*Clark University*

Joe Krahe  
*Clark University*

Sarah Philbrick  
*Clark University*

---

### Recommended Citation

Mosakowski Institute; Brown, John C.; Krahe, Joe; and Philbrick, Sarah, "Data Profiles - Methuen" (2016). *Mosakowski Institute for Public Enterprise*. 49.

<https://commons.clarku.edu/mosakowskiinstitute/49>

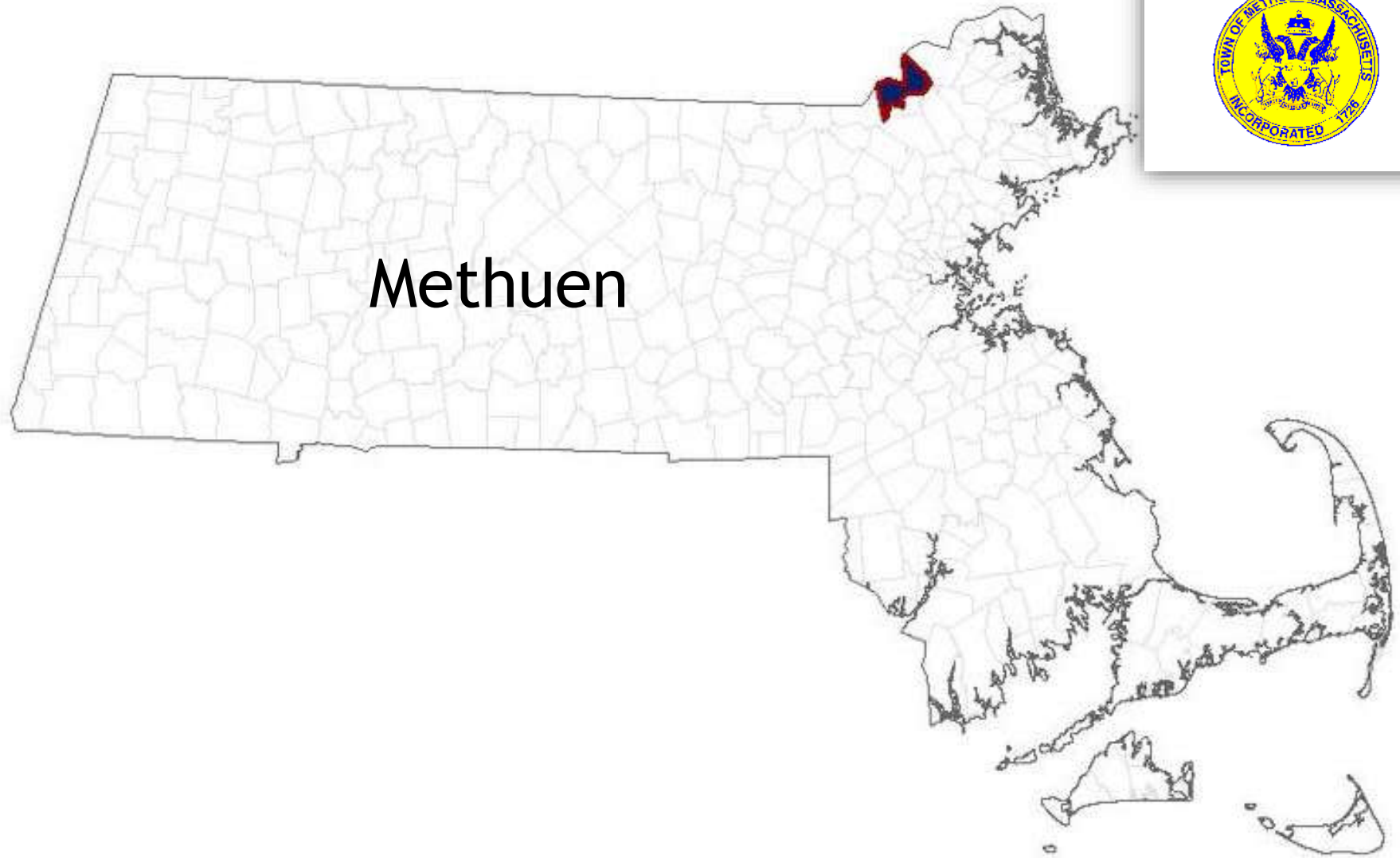
This Article is brought to you for free and open access by the Academic Departments, Centers & Programs at Clark Digital Commons. It has been accepted for inclusion in Mosakowski Institute for Public Enterprise by an authorized administrator of Clark Digital Commons. For more information, please contact [mkrikonis@clarku.edu](mailto:mkrikonis@clarku.edu), [jodolan@clarku.edu](mailto:jodolan@clarku.edu).

---

## Data Profiles - Methuen

**Keywords**

data profiles, methuen, gateway cities, working cities

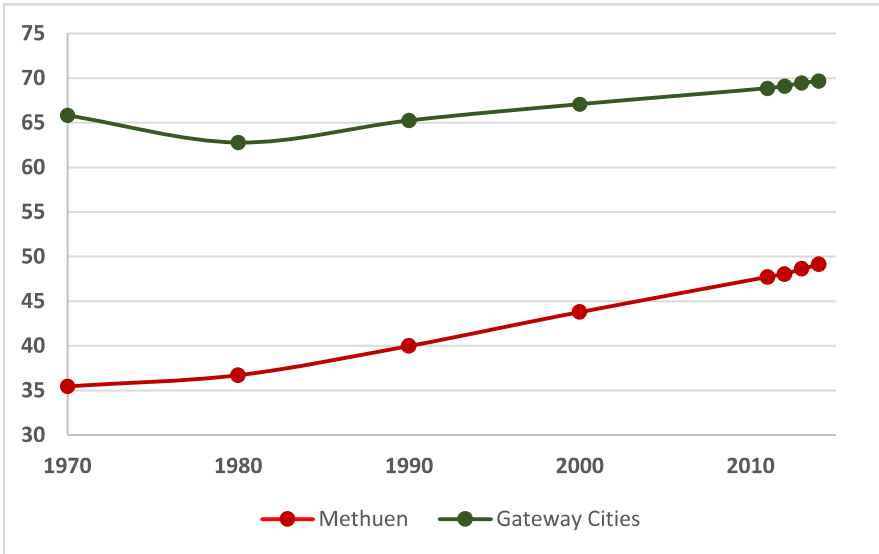


Methuen

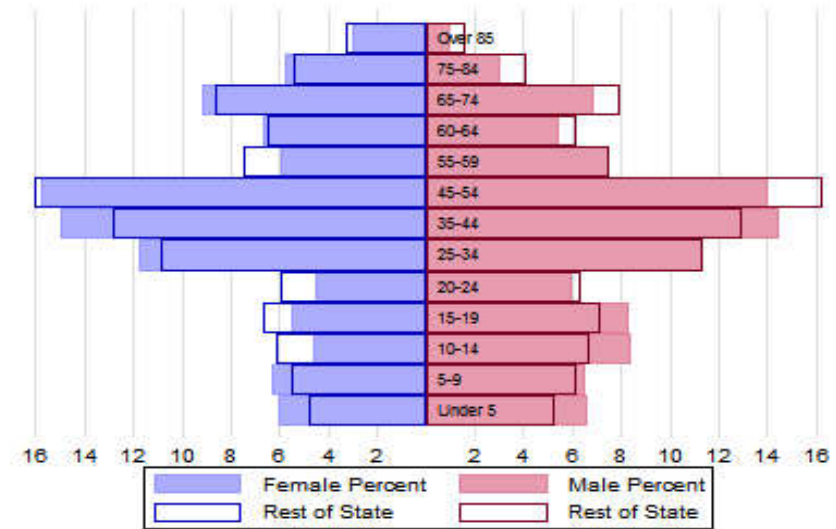


# The Population

## City Population 1970 to 2014



## Population Distribution by Age Group



## Population Distribution by Race and Ethnicity

Subgroups of the population as a percent of the total	2000	2013	Gateway Cities 2013	State 2013
White	89.4	79.6	73.8	89.0
Black	1.3	3.3	8.0	2.8
Asian	2.4	4.1	5.3	4.8
Foreign-born	11.2	14.9	19.9	12.1
Hispanic	9.6	18.1	19.6	4.3
<b>Origin as percent of Hispanic</b>				
Central America	2.7	5.4	15.8	20.3
Dominican Republic	31.0	46.3	14.4	17.9
Mexico	1.7	1.8	5.5	11.4
Puerto Rico	40.1	31.6	45.5	33.6

## Recent Demographic Behavior

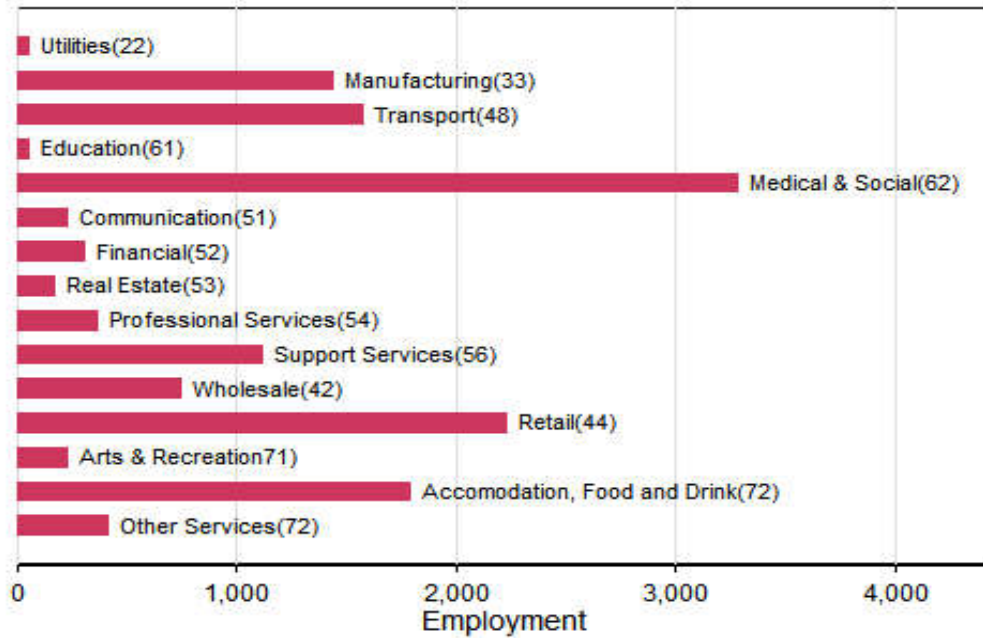
Indicator	Methuen	Gateway Cities	State
Birth Rate (per 1,000 females 15-44)	67.5	62.1	52.8
Low birthweight (<2.5 kg. % of births)	5.5	8.0	7.7
Births to teen mothers (15-19 years)†	3.7	6.0	3.8
Birth rate of teen mothers‡	13.5	22.3	12.0
Infant mortality (per 1,000 live births)	1.8	4.9	4.4
Mortality rate (per 100,000 residents)	867.0	844.9	800.0

†As percent of all births

‡Per 1,000 females aged 15-19 years

# The Local Economy

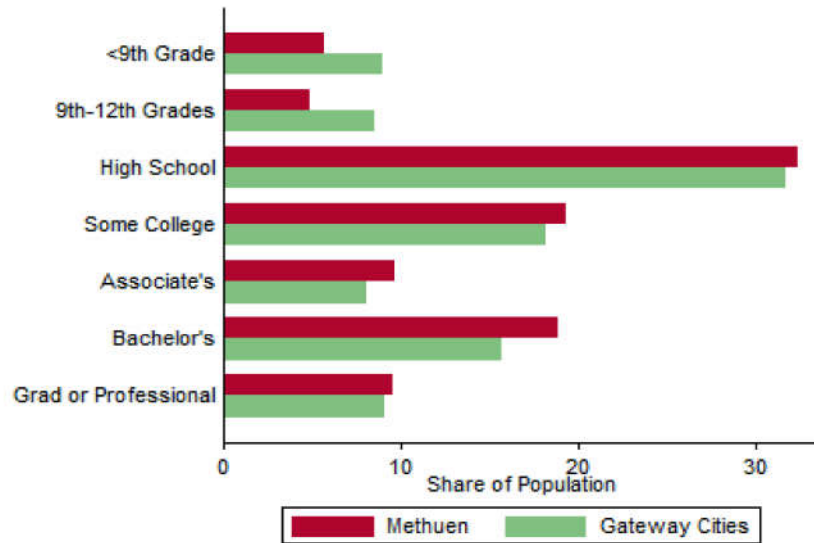
## Employment by Major Sectors: 2012 (2-digit NAICS)



## The Five Largest Industries: 2012 (4-digit NAICS industries)

Description	NAICS	Employment
Restaurants	7225	1000-2499
General Hospitals	6221	1000-2499
Bus Transportation (Schools & Employees)	4854	1000-2499
Grocery Stores	4451	500-999
Electronic Components	3344	250-499

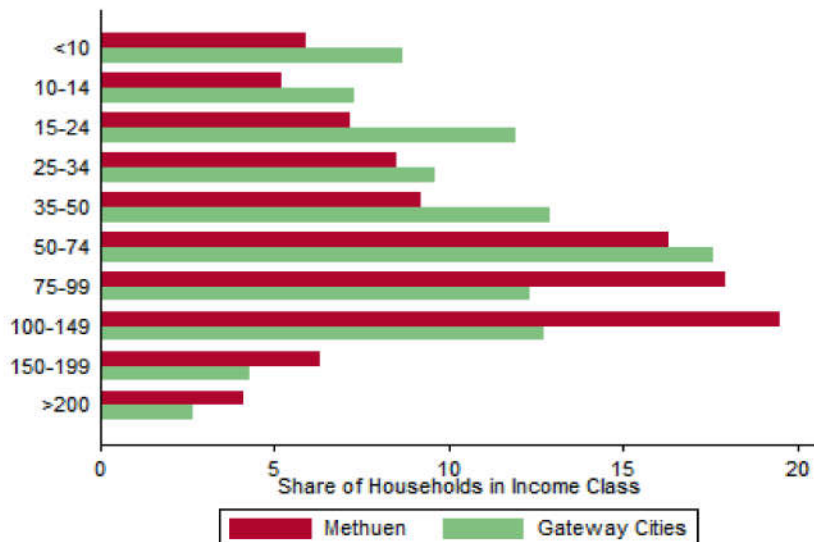
### Educational Attainment of the Population Aged 25 and Older



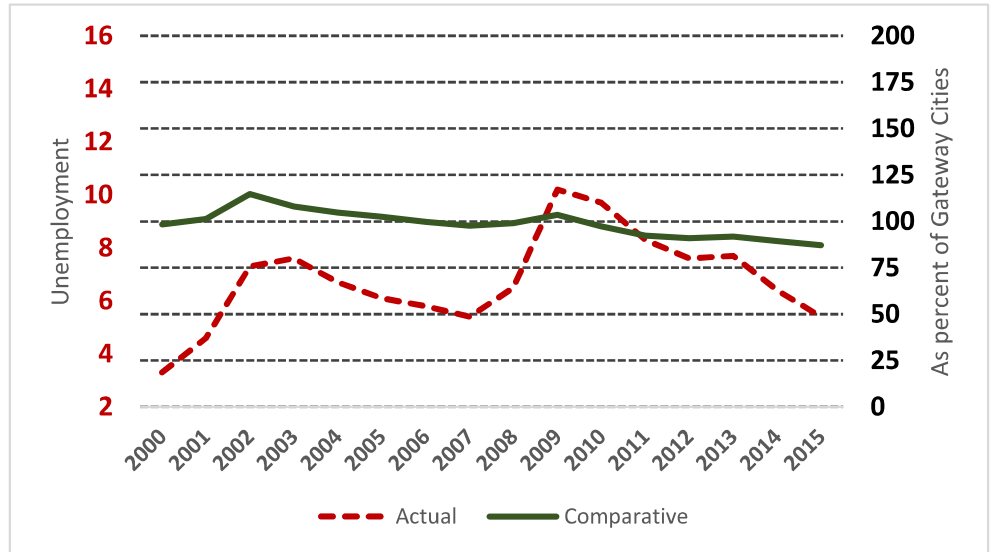
### Key Indicators of Income and Commuting

Indicator	Malden	Gateway Cities
Median Family Income (\$)	51,916	60,087
Families below Poverty Line (%)	15.2	14.3
Children < 18 below Poverty Line (%)	24.4	25.5
Families with Food Assistance (%)	15.9	20.8
Mean Travel Time to Work (Mins.)	34.5	26.4
Commute with Public Transit (%)	29.8	8.6

### Distribution of Households by Income Class (in \$1,000)



### Unemployment Rate: 2000-2015



# Housing

## Housing Market Indicators in 2013

Indicator	Methuen	Gateway Cities	State
Share owner-occupied	0.71	0.50	0.62
Median Home Value	274,800	252,085	325,800
Average Rent for Studio	752	735	746
Average Rent for One-Bedroom	1123	786	765
Average Rent for Two-Bedroom	1325	1097	926
Average Rent for Three-Bedroom	1324	1182	863
Average Size of Owner-Occupied Households	2.21	2.68	2.25
Average Size of Tenant Households	2.94	2.38	2.70

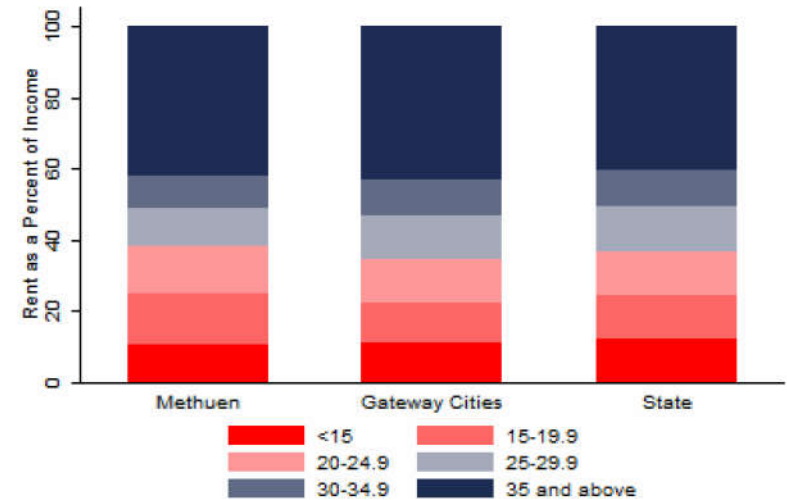
# Education

## Indicators for 2014

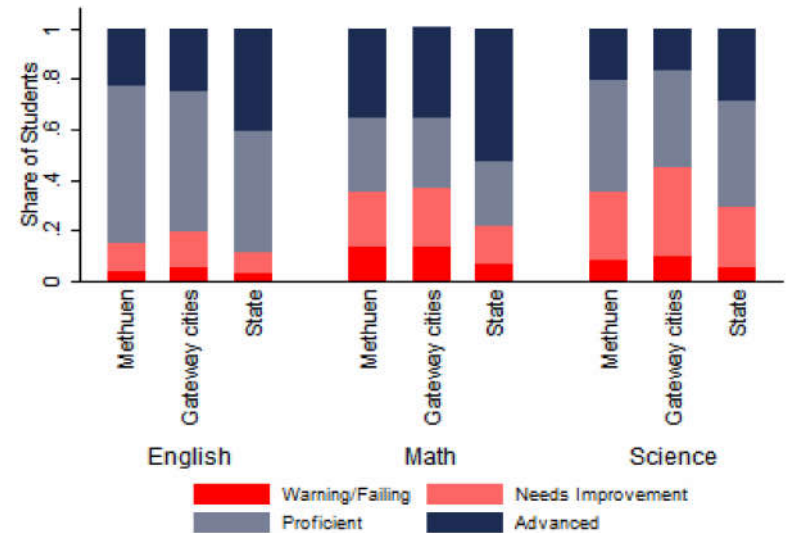
Indicator	Methuen	Gateway Cities	State
Average class size	20.5	18.3	18.1
Percent Proficient or Advanced (English 10th)	85.0	80.3	90.0
Percent Proficient or Advanced (Math 10th)	65.0	63.4	79.0
Student Growth Percentile English (10th)	46.0	43.7	51.0
Student Growth Percentile Math (10th)	39.0	43.4	50.0
Graduates attending college or university†	78.8	69.7	76.6
Male Dropout Rate	6.7	11.8	6.7
Female Dropout Rate	3.6	7.9	4.4
English Language Learners Dropout Rate	2.9	16.8	14.9
Low Income Dropout Rate	9.0	11.8	10.2

†Percent of 2013 class

## Housing Affordability



## 10th Grade MCAS Scores in 2014



## Mortality and Health

	Methuen	Gateway Cities	State
Lung Cancer Deaths (per 100,000 people) †	76.2	61.3	54.1
Cardiovascular Disease Deaths (per 100,000) †	289.8	254.7	237.4
Opioid Overdose Deaths (per 100,000)‡	20.4	25.5	13.0
HIV/Aids Prevalence Rate (per 100,000 people) 2010†	141.5	317.0	282.3
Admissions to DPH Substance Abuse Programs (per 100,000 people) ‡	1040	2189	1568
Hospital Discharges for Asthma (per 100,000) 2009	135.4	208.8	162.0
Percent overweight or obese children in grade 10 ‡	32.5	38.2	32.3
Percent of population on some form of non-private insurance 2013	23.7	36.1	17.2

†2010

‡2014



## Civic Engagement

### Voting Behavior in 2014

Indicator	Methuen	Gateway Cities	State
Registered voters as percent of population aged 18 and above	82.8	75.1	76.0
Voters in 2014 election as percent of registered voters	47.4	43.5	72.7
Voters in 2014 election as percent of population aged 18 and above	39.3	32.8	55.2

### Not-for-Profit Sector

Indicator (in \$ per capita)	Methuen	Gateway Cities	State
Assets of Education, Finance, and Medical Non-Profits	268	10,152	27,527
Assets of Other Non-Profits	1,481	5,530	18,501
Revenue of Education, Finance, and Medical Non-Profits	370	4,361	10,472
Revenue of Other Non-Profits	2,666	3,050	10,589

### Major Nonprofits in Education, Finance and Health Services (in \$millions)

Name	Revenues	Assets	Area
Henry C Nevins Home Inc	14.39	6.97	Healthcare
Nevins Community Services Inc	3.45	5.95	Healthcare

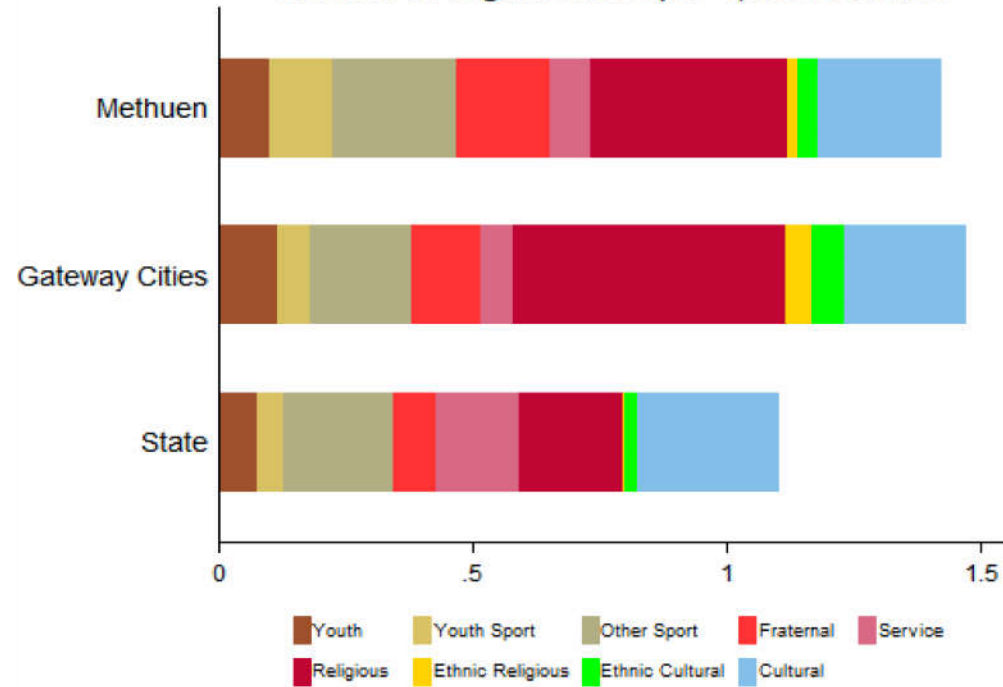
**Other Nonprofits** (in \$millions)

Name	Revenues	Assets	Area
St Anns Home Inc	21.29	27.48	Education
Collaborative for Regional Educational Services And Training	10.63	6.47	Education
Childrens Center of The Faith United Methodist Church of Methuen	1.39	0.34	Human Services
Nevins Memorial	1.05	5.86	Public Benefit
Merrimack Valley Islamic Academy Inc	0.98	0.28	Religion-Related
Laborers International Union of North America	0.81	1.38	Employment
Lebanese Community Housing for the Elderly Inc	0.75	1.64	Housing
Nevins Manor Inc	0.67	4.34	Housing
Methuen Community Television Corp	0.60	2.48	Arts & Culture
Grace Dental and Medical Missions Inc	0.51	0.16	Foreign Affairs
Essex Rowing Club Inc	0.48	0.12	Sports
Chiropractic Society Inc Massachusetts	0.41	0.00	Diseases
Cedars Elderly Home Inc	0.33	3.33	Housing
New England Veterans Liberty House Inc	0.30	0.03	Public Benefit
Blueskies Wellness Inc	0.30	0.05	Human Services

Nonprofits with a strong associative component

## Associative Nonprofits

Number of Organizations per 1,000 residents



Methuen