

2016

Data Profiles - Lynn

Mosakowski Institute
Clark University

John C. Brown
Clark University

Joe Krahe
Clark University

Sarah Philbrick
Clark University

Recommended Citation

Mosakowski Institute; Brown, John C.; Krahe, Joe; and Philbrick, Sarah, "Data Profiles - Lynn" (2016). *Mosakowski Institute for Public Enterprise*. 51.

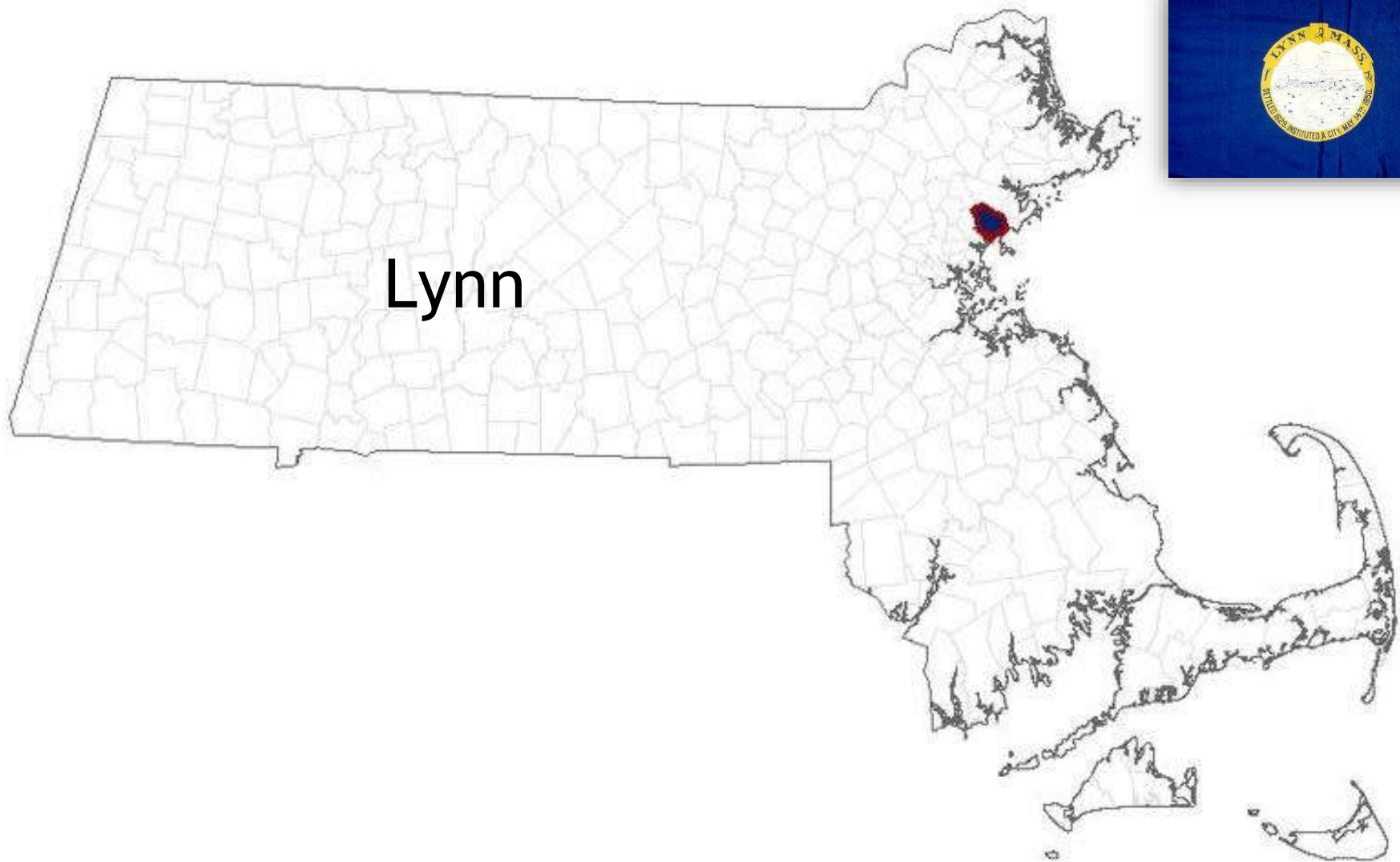
<https://commons.clarku.edu/mosakowskiinstitute/51>

This Article is brought to you for free and open access by the Academic Departments, Centers & Programs at Clark Digital Commons. It has been accepted for inclusion in Mosakowski Institute for Public Enterprise by an authorized administrator of Clark Digital Commons. For more information, please contact mkrikonis@clarku.edu, jodolan@clarku.edu.

Data Profiles - Lynn

Keywords

data profiles, lynn, gateway cities, working cities

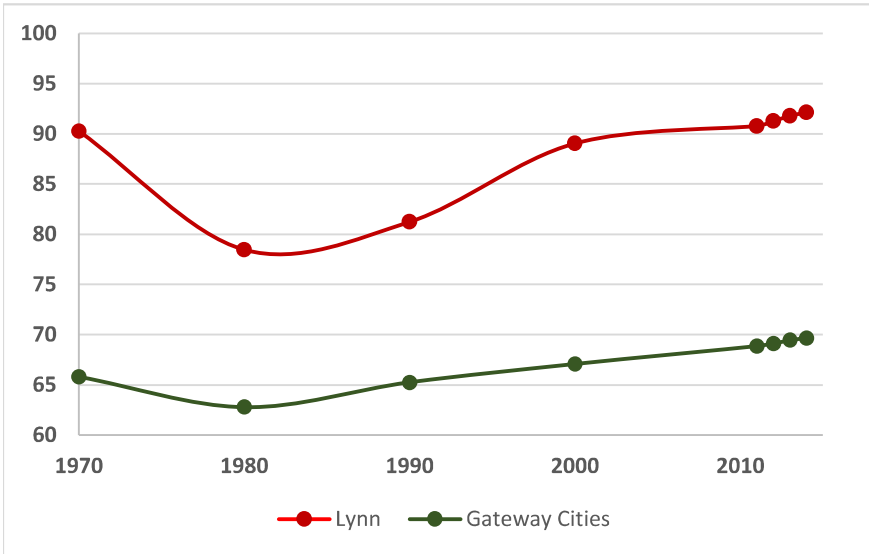


Lynn

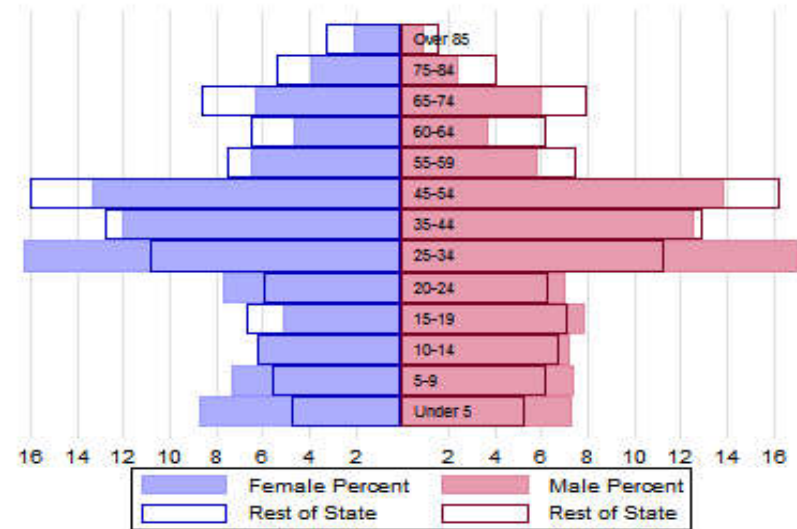


The Population

City Population 1970 to 2014



Population Distribution by Age Group



Population Distribution by Race and Ethnicity

Subgroups of the population as a percent of the total	2000	2013	Gateway Cities 2013	State 2013
White	67.9	58.2	73.8	89.0
Black	10.5	13.0	8.0	2.8
Asian	6.4	6.9	5.3	4.8
Foreign-born	22.8	30.1	19.9	12.1
Hispanic	18.4	32.1	19.6	4.3
Origin as percent of Hispanic				
Central America	12.0	31.2	15.8	20.3
Dominican Republic	33.7	32.8	14.4	17.9
Mexico	5.2	5.2	5.5	11.4
Puerto Rico	23.0	16.9	45.5	33.6

Recent Demographic Behavior

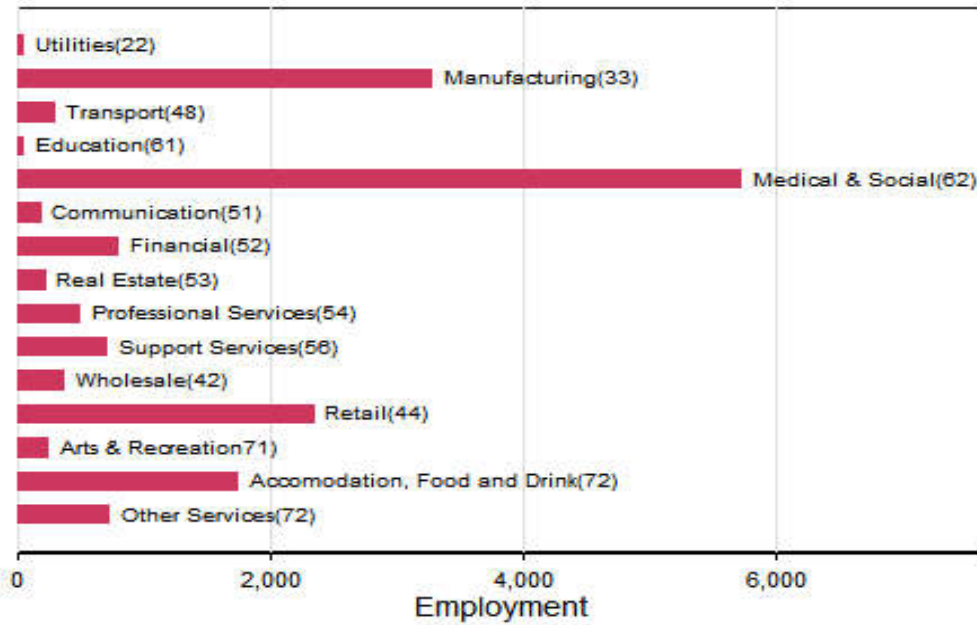
Indicator	Lynn	Gateway Cities	State
Birth Rate (per 1,000 females 15-44)	75.3	62.1	52.8
Low birthweight (<2.5 kg. % of births)	7.4	8.0	7.7
Births to teen mothers (15-19 years)†	7.3	6.0	3.8
Birth rate of teen mothers‡	32.9	22.3	12.0
Infant mortality (per 1,000 live births)	4.9	4.9	4.4
Mortality rate (per 100,000 residents)	735.0	844.9	800.0

†As percent of all births

‡Per 1,000 females aged 15-19 years

The Local Economy

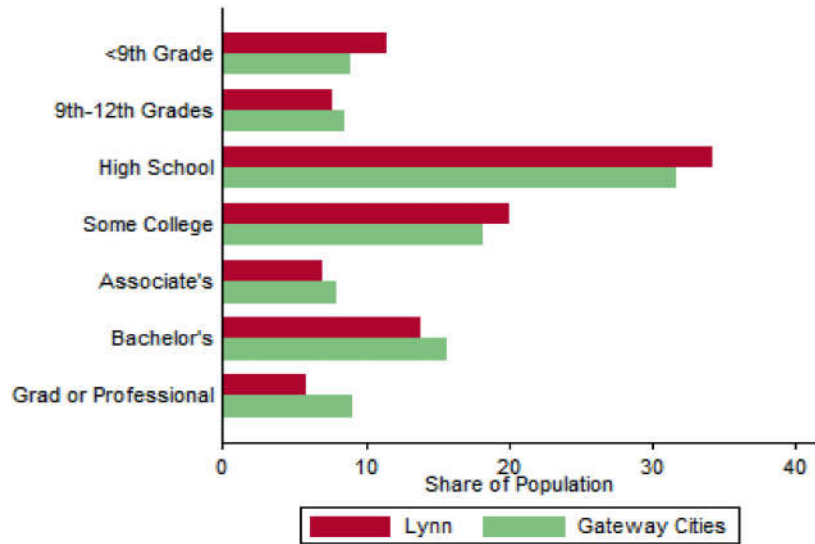
Employment by Major Sectors: 2012 (2-digit NAICS)



The Five Largest Industries: 2012 (4-digit NAICS industries)

Description	NAICS	Employment
Individual and Family Services	6241	1000-2499
Home Health Care Services	6216	1000-2499
Restaurants	7225	1000-2499
Outpatient Care	6214	500-999
Depository Credit Intermediation	5221	500-999

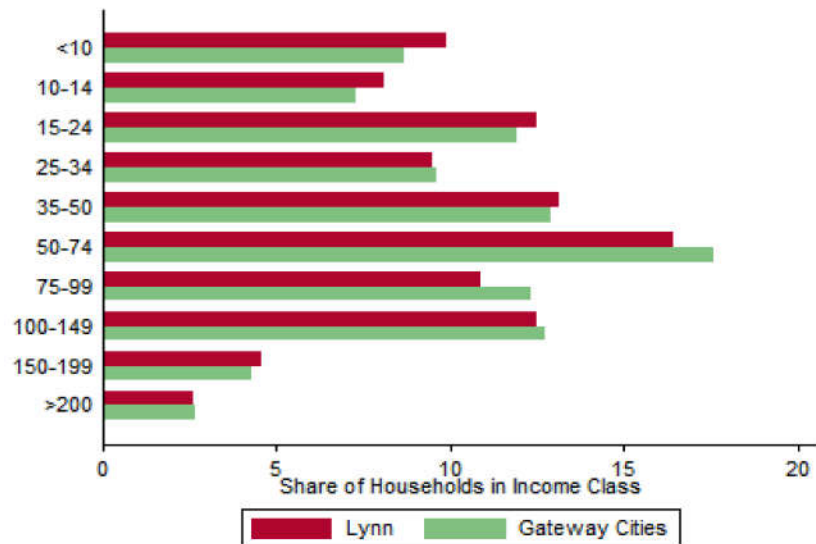
Educational Attainment of the Population Aged 25 and Older



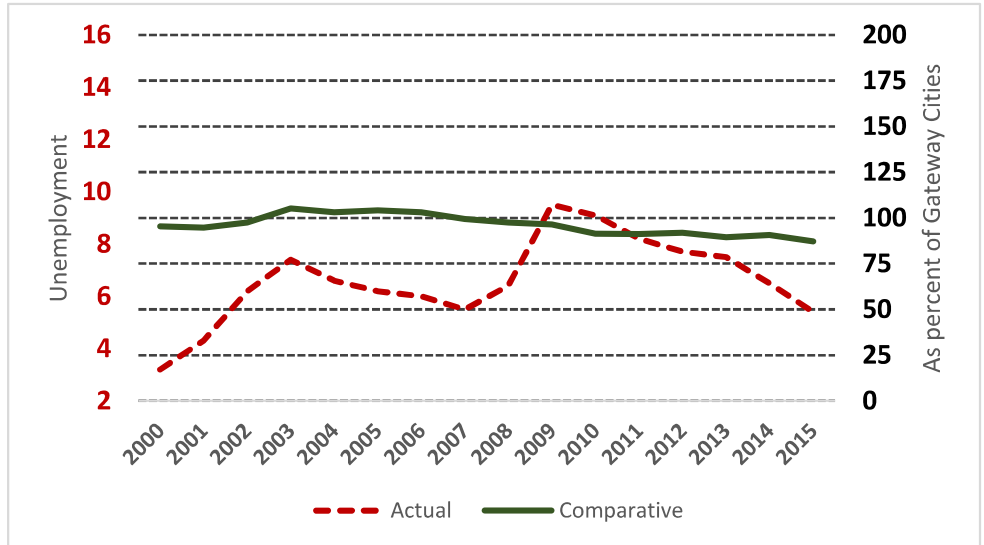
Key Indicators of Income and Commuting

Indicator	Lynn	Gateway Cities
Median Family Income (\$)	45,593	60,087
Families below Poverty Line (%)	18	14.3
Children < 18 below Poverty Line (%)	31.5	25.5
Families with Food Assistance (%)	28.6	20.8
Mean Travel Time to Work (Mins.)	28.3	26.4
Commute with Public Transit (%)	12.8	8.6

Distribution of Households by Income Class (in \$1,000)



Unemployment Rate: 2000-2015



Housing

Housing Market Indicators in 2013

Indicator	Lynn	Gateway Cities	State
Share owner-occupied	0.46	0.50	0.62
Median Home Value	250,200	252,085	325,800
Average Rent for Studio	782	735	746
Average Rent for One-Bedroom	848	786	765
Average Rent for Two-Bedroom	1122	1097	926
Average Rent for Three-Bedroom	1248	1182	863
Average Size of Owner-Occupied Households	2.65	2.68	2.25
Average Size of Tenant Households	2.95	2.38	2.70

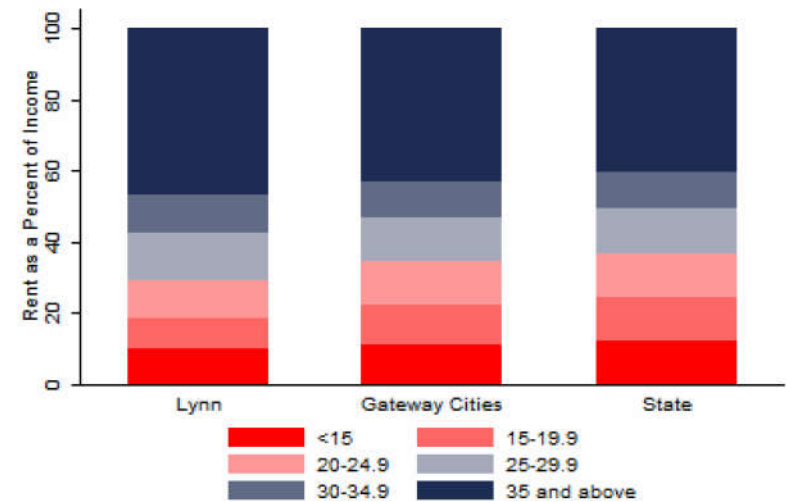
Education

Indicators for 2014

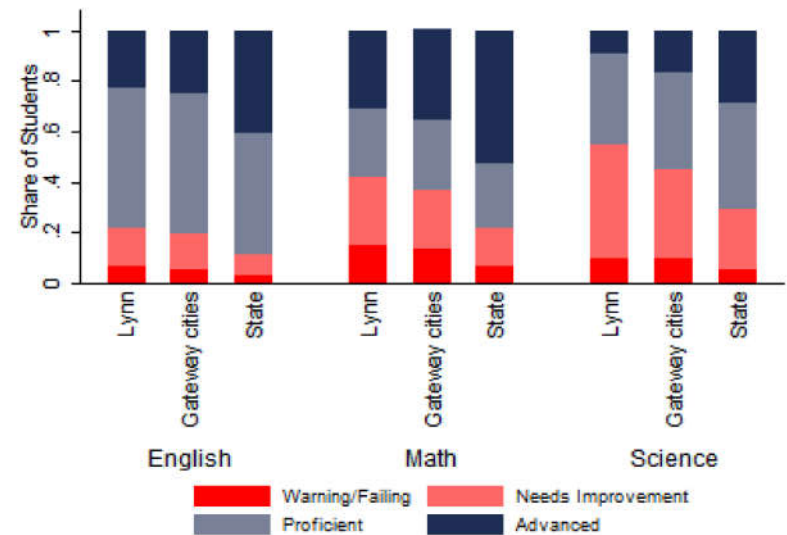
Indicator	Lynn	Gateway Cities	State
Average class size	19.6	18.3	18.1
Percent Proficient or Advanced (English 10th)	78.0	80.3	90.0
Percent Proficient or Advanced (Math 10th)	58.0	63.4	79.0
Student Growth Percentile English (10th)	53.0	43.7	51.0
Student Growth Percentile Math (10th)	50.0	43.4	50.0
Graduates attending college or university†	64.0	69.7	76.6
Male Dropout Rate	14.1	11.8	6.7
Female Dropout Rate	9.6	7.9	4.4
English Language Learners Dropout Rate	21.8	16.8	14.9
Low Income Dropout Rate	11.4	11.8	10.2

†Percent of 2013 class

Housing Affordability



10th Grade MCAS Scores in 2014



Mortality and Health

	Lynn	Gateway Cities	State
Lung Cancer Deaths (per 100,000 people) †	56.0	61.3	54.1
Cardiovascular Disease Deaths (per 100,000) †	192.2	254.7	237.4
Opioid Overdose Deaths (per 100,000)‡	40.2	25.5	13.0
HIV/Aids Prevalence Rate (per 100,000 people) 2010†	398.1	317.0	282.3
Admissions to DPH Substance Abuse Programs (per 100,000 people) ‡	2435	2189	1568
Hospital Discharges for Asthma (per 100,000) 2009	207.6	208.8	162.0
Percent overweight or obese children in grade 10 ‡	40.4	38.2	32.3
Percent of population on some form of non-private insurance 2013	45.3	36.1	17.2

†2010

‡2014

Civic Engagement

Voting Behavior in 2014

Indicator	Lynn	Gateway Cities	State
Registered voters as percent of population aged 18 and above	74.1	75.1	76.0
Voters in 2014 election as percent of registered voters	41.8	43.5	72.7
Voters in 2014 election as percent of population aged 18 and above	31.0	32.8	55.2

Not-for-Profit Sector

Indicator (in \$ per capita)	Lynn	Gateway Cities	State
Assets of Education, Finance, and Medical Non-Profits	7,524	10,152	27,527
Assets of Other Non-Profits	3,817	5,530	18,501
Revenue of Education, Finance, and Medical Non-Profits	2,314	4,361	10,472
Revenue of Other Non-Profits‡	191	3,050	10,589

‡ Median value of non-profits used due to distribution of data

Major Nonprofits in Education, Finance and Health Services (in \$millions)

Name	Revenues	Assets	Area
Element Care Inc	80.86	63.70	Healthcare
Lynn Community Health Inc	75.33	31.90	Healthcare
All Care Visiting Nurse Assn of Greater Lynn	15.88	9.95	Healthcare
All Care Resources Inc	9.47	12.58	Healthcare
St Jeans Credit Union	6.61	148.48	Financial
Community Credit Union of Lynn	5.83	128.85	Financial
River Works Credit Union	4.81	94.30	Financial
Health Management Services Inc Fna Visiting Nurse Health Mgmt Service	2.95	5.29	Healthcare
Brotherhood Credit Union	2.80	108.20	Financial
North Shore Christian School Society	1.96	0.86	Education

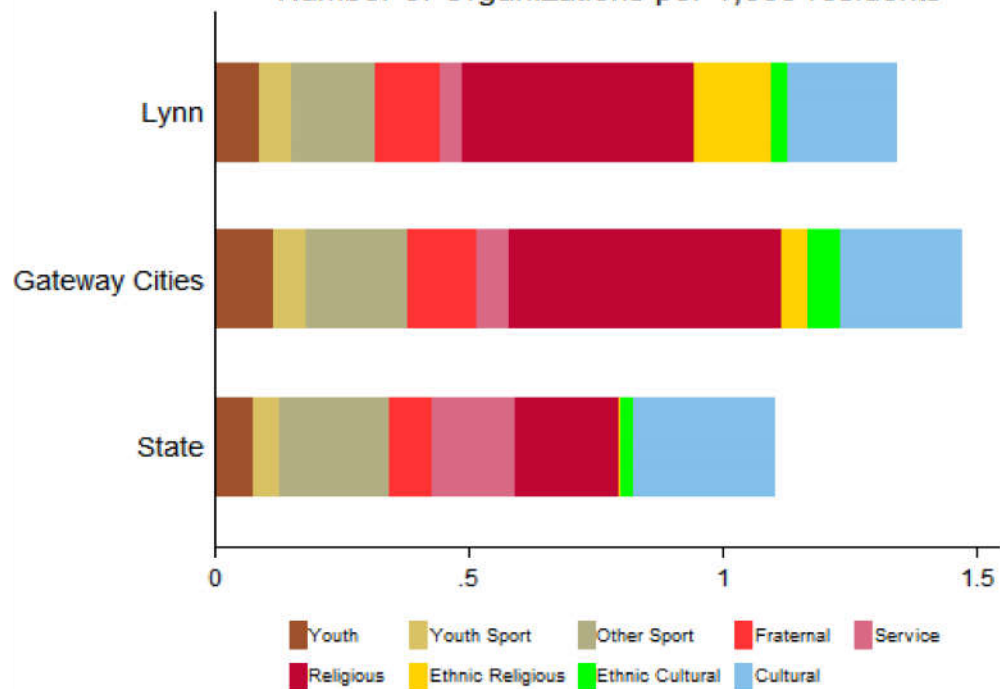
Other Nonprofits (in \$millions)

Name	Revenues	Assets	Area
Selena Thomas Jackson Profit Organization	32773.72	0.00	Community Improvement
Greater Lynn Senior Services Inc	52.25	17.48	Human Services
Eastern Bank Charitable Foundation	13.06	64.45	Philanthropy
Lynn Economic Opportunity Inc	10.87	6.94	Human Services
All Care Hospice Inc	7.96	10.29	Human Services
Centerboard Inc	6.62	3.07	Human Services
Gregg Neighborhood House Association Inc	4.97	6.29	Human Services
Cerebral Palsy Association of Eastern Massachusetts Inc	4.60	2.19	Diseases
Boys & Girls Club of Lynn	4.54	5.50	Youth Development
Massachusetts Coalition for the Homeless Inc	3.74	2.46	Human Services
Kipp Lynn Fund Inc	3.28	24.78	Philanthropy
Girls Incorporated of Lynn	2.96	6.12	Youth Development
Raw Art Works Inc	2.80	2.86	Mental Health
Ellison Foundation	2.64	74.75	Philanthropy
Lynn Shelter Association Inc	2.55	0.69	Housing

Nonprofits with a strong associative component

Associative Nonprofits

Number of Organizations per 1,000 residents



Lynn