

2016

# Data Profiles - Lowell

Mosakowski Institute  
*Clark University*

John C. Brown  
*Clark University*

Joe Krahe  
*Clark University*

Sarah Philbrick  
*Clark University*

---

## Recommended Citation

Mosakowski Institute; Brown, John C.; Krahe, Joe; and Philbrick, Sarah, "Data Profiles - Lowell" (2016). *Mosakowski Institute for Public Enterprise*. 52.

<https://commons.clarku.edu/mosakowskiinstitute/52>

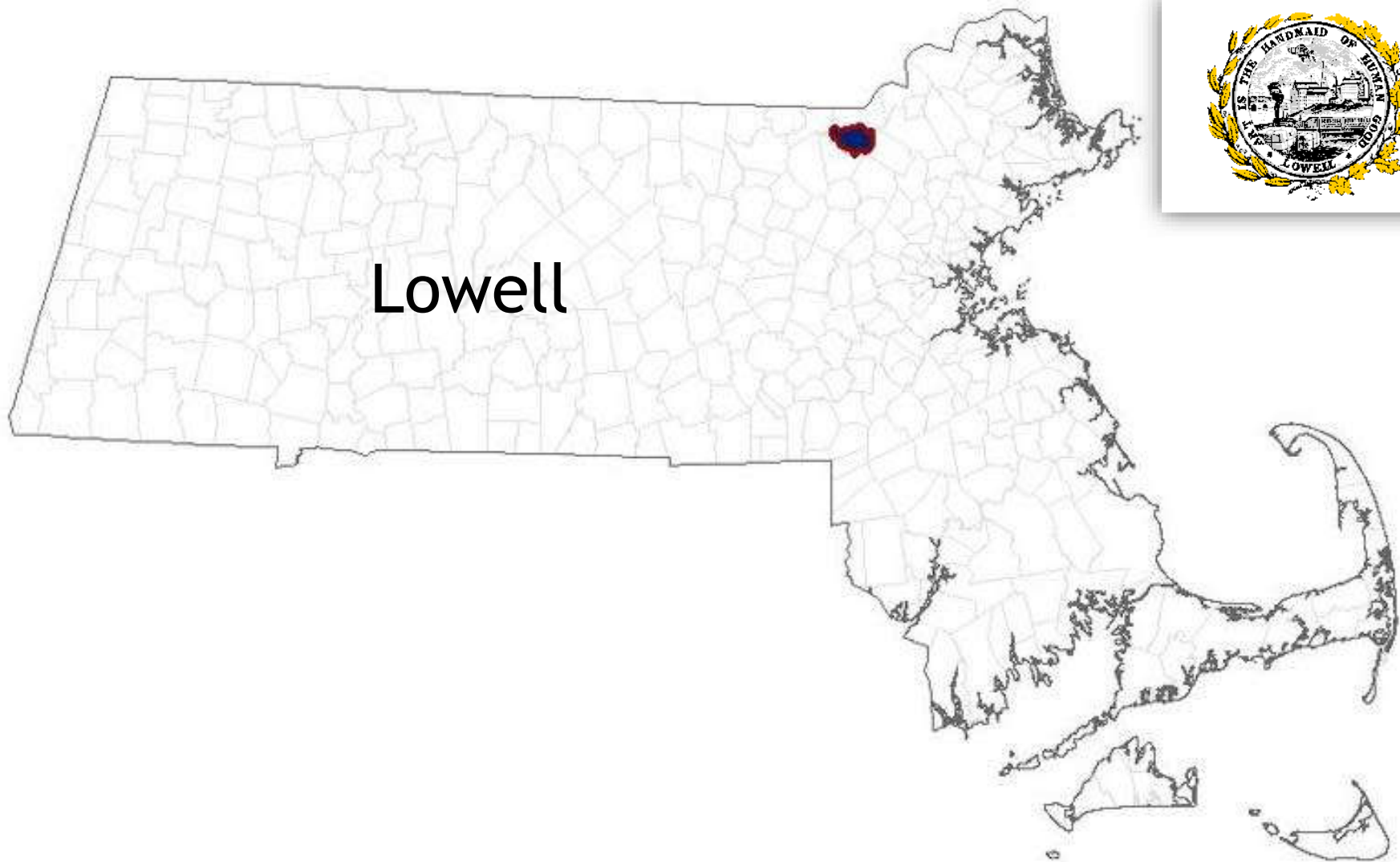
This Article is brought to you for free and open access by the Academic Departments, Centers & Programs at Clark Digital Commons. It has been accepted for inclusion in Mosakowski Institute for Public Enterprise by an authorized administrator of Clark Digital Commons. For more information, please contact [mkrikonis@clarku.edu](mailto:mkrikonis@clarku.edu), [jodolan@clarku.edu](mailto:jodolan@clarku.edu).

---

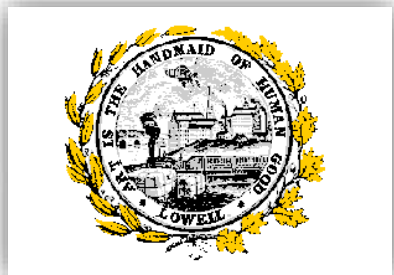
## Data Profiles - Lowell

**Keywords**

data profiles, lowell, gateway cities, working cities

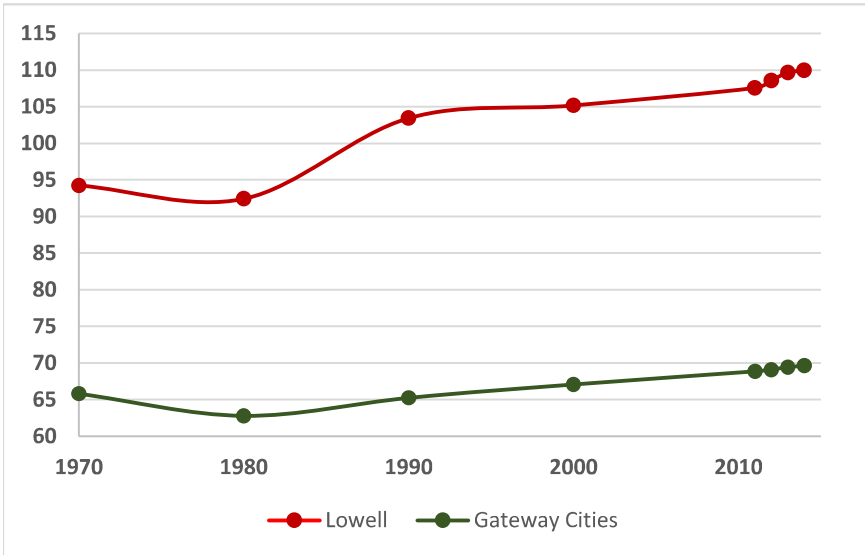


Lowell

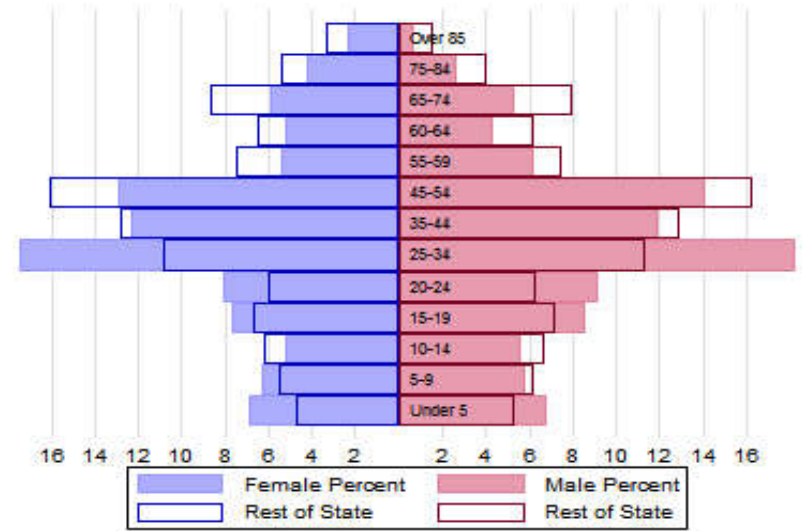


# The Population

## City Population 1970 to 2014



## Population Distribution by Age Group



## Population Distribution by Race and Ethnicity

| Subgroups of the population as a percent of the total | 2000 | 2013 | Gateway Cities 2013 | State 2013 |
|---|------|------|---------------------|------------|
| White   | 68.6 | 58.1 | 73.8                | 89.0       |
| Black   | 4.2  | 6.8  | 8.0                 | 2.8        |
| Asian   | 16.5 | 19.8 | 5.3                 | 4.8        |
| Foreign-born  | 22.1 | 24.8 | 19.9                | 12.1       |
| Hispanic  | 14.0 | 17.3 | 19.6                | 4.3        |
| <b>Origin as percent of Hispanic</b>                  |      |      |                     |            |
| Central America                                       | 1.6  | 3.4  | 15.8                | 20.3       |
| Dominican Republic                                    | 6.9  | 10.9 | 14.4                | 17.9       |
| Mexico  | 1.9  | 2.8  | 5.5                 | 11.4       |
| Puerto Rico   | 65.2 | 65.7 | 45.5                | 33.6       |

## Recent Demographic Behavior

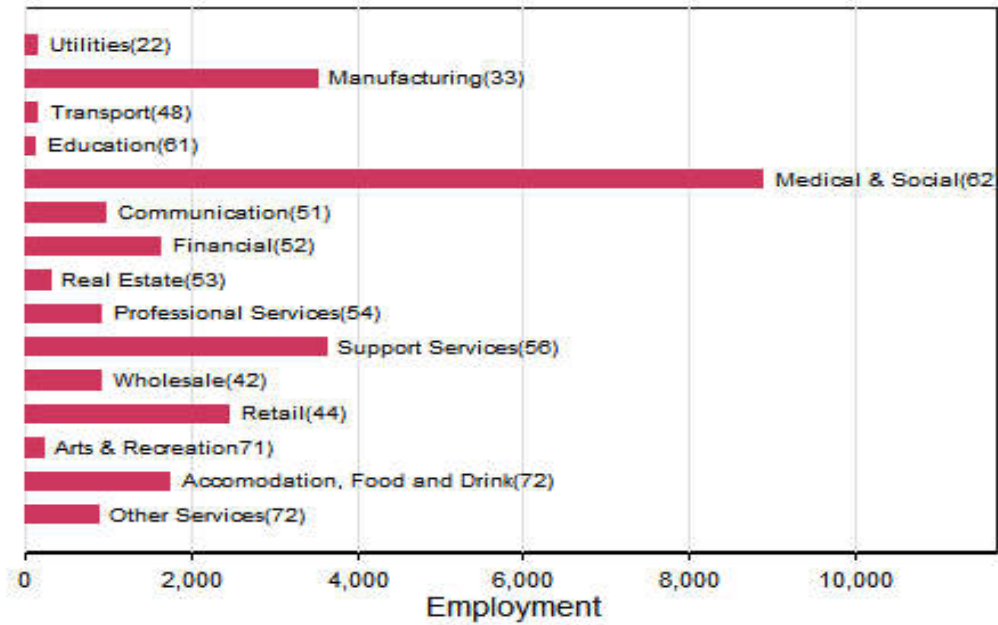
| Indicator                                | Lowell | Gateway Cities | State |
|--|--------|----------------|-------|
| Birth Rate (per 1,000 females 15-44)     | 65.6   | 62.1           | 52.8  |
| Low birthweight (<2.5 kg. % of births)   | 8.4    | 8.0            | 7.7   |
| Births to teen mothers (15-19 years)†    | 6.5    | 6.0            | 3.8   |
| Birth rate of teen mothers‡              | 25.7   | 22.3           | 12.0  |
| Infant mortality (per 1,000 live births) | 8.9    | 4.9            | 4.4   |
| Mortality rate (per 100,000 residents)   | 793    | 844.9          | 800.0 |

†As percent of all births

‡Per 1,000 females aged 15-19 years

# The Local Economy

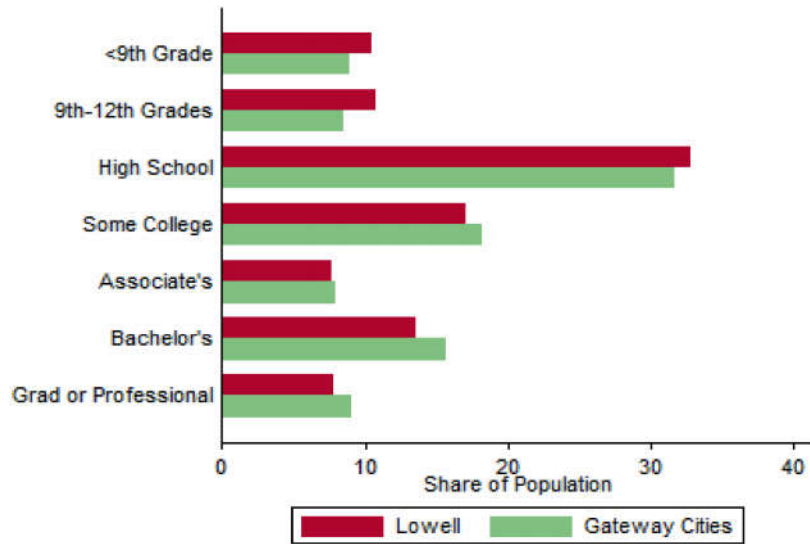
## Employment by Major Sectors: 2012 (2-digit NAICS)



## The Five Largest Industries: 2012 (4-digit NAICS industries)

| Description                         | NAICS | Employment |
|-------------------------------------|-------|------------|
| General Hospitals                   | 6221  | 2500-4999  |
| Skilled Nursing Facilities          | 6231  | 1000-2499  |
| Restaurants                         | 7225  | 1000-2499  |
| Investigation and Security Services | 5616  | 1000-2499  |
| Electronic Components               | 3344  | 1000-2499  |

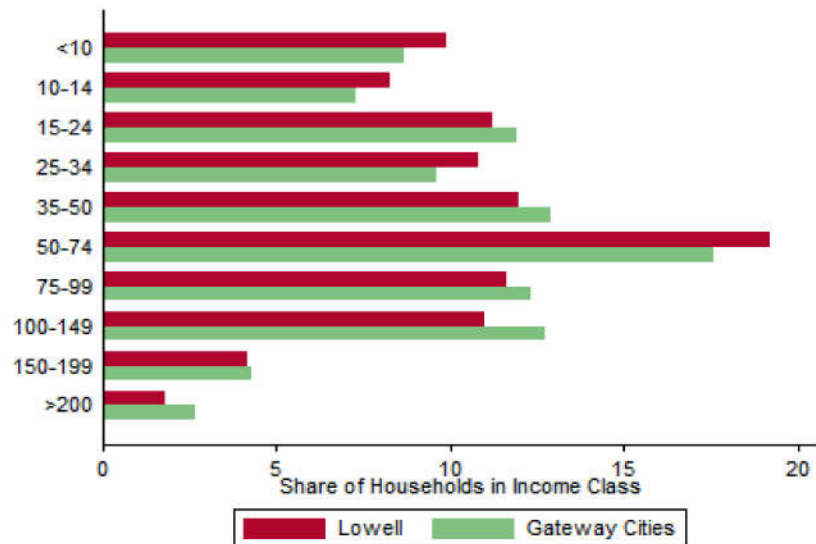
### Educational Attainment of the Population Aged 25 and Older



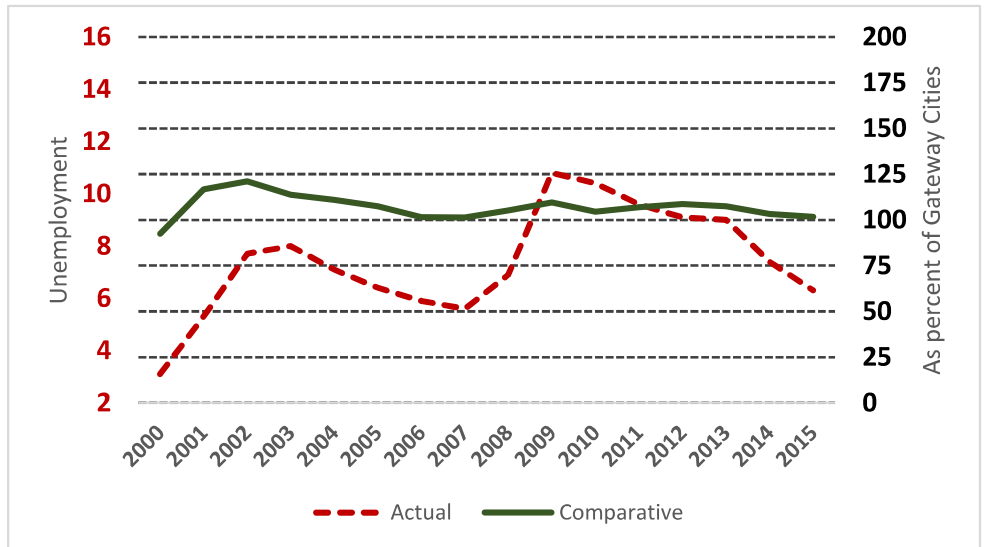
### Key Indicators of Income and Commuting

| Indicator                            | Lowell | Gateway Cities |
|--------------------------------------|--------|----------------|
| Median Family Income (\$)            | 46,652 | 60,087         |
| Families below Poverty Line (%)      | 16.6   | 14.3           |
| Children < 18 below Poverty Line (%) | 29.1   | 25.5           |
| Families with Food Assistance (%)    | 23.1   | 20.8           |
| Mean Travel Time to Work (Mins.)     | 25.2   | 26.4           |
| Commute with Public Transit (%)      | 3.6    | 8.6            |

### Distribution of Households by Income Class (in \$1,000)



### Unemployment Rate: 2000-2015



# Housing

## Housing Market Indicators in 2013

| Indicator                                 | Lowell  | Gateway Cities | State   |
|---|---------|----------------|---------|
| Share owner-occupied                      | 0.43    | 0.50           | 0.62    |
| Median Home Value                         | 227,500 | 252,085        | 325,800 |
| Average Rent for Studio                   | 519     | 735            | 746     |
| Average Rent for One-Bedroom              | 733     | 786            | 765     |
| Average Rent for Two-Bedroom              | 1084    | 1097           | 926     |
| Average Rent for Three-Bedroom            | 1056    | 1182           | 863     |
| Average Size of Owner-Occupied Households | 2.48    | 2.68           | 2.25    |
| Average Size of Tenant Households         | 2.87    | 2.38           | 2.70    |

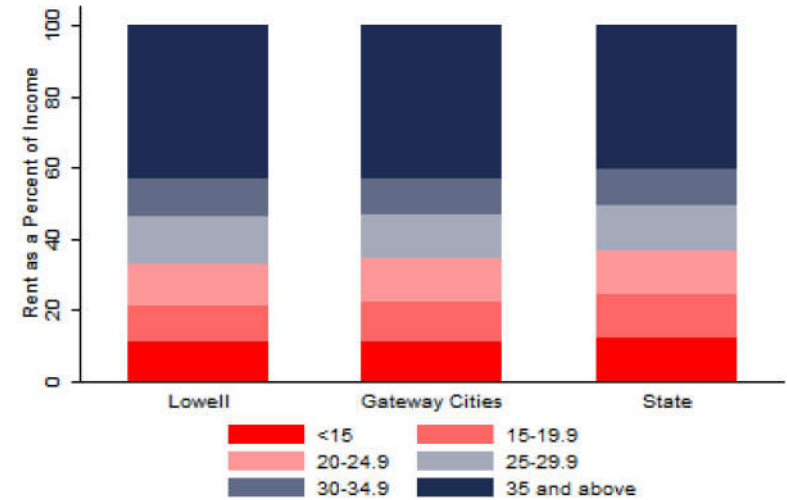
# Education

## Indicators for 2014

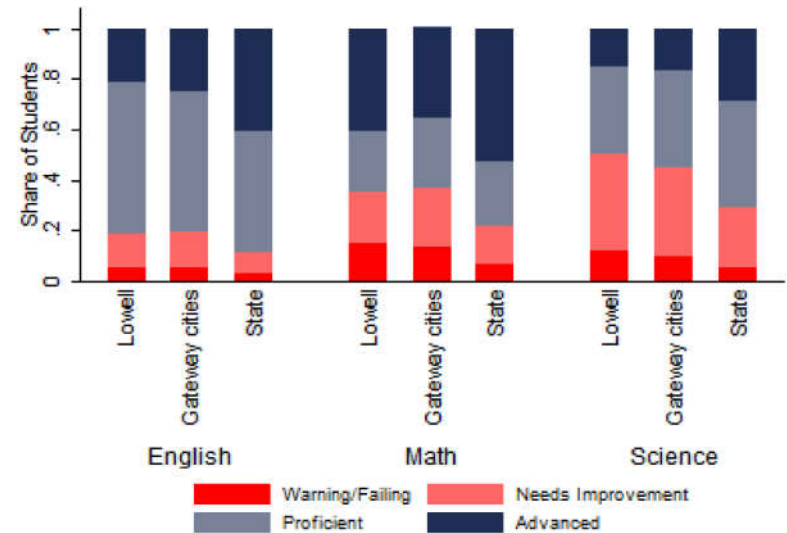
| Indicator                                     | Lowell | Gateway Cities | State |
|---|--------|----------------|-------|
| Average class size                            | 19.3   | 18.3           | 18.1  |
| Percent Proficient or Advanced (English 10th) | 80.0   | 80.3           | 90.0  |
| Percent Proficient or Advanced (Math 10th)    | 65.0   | 63.4           | 79.0  |
| Student Growth Percentile English (10th)      | 41.0   | 43.7           | 51.0  |
| Student Growth Percentile Math (10th)         | 46.5   | 43.4           | 50.0  |
| Graduates attending college or university†    | 81.9   | 69.7           | 76.6  |
| Male Dropout Rate                             | 14.1   | 11.8           | 6.7   |
| Female Dropout Rate                           | 11.1   | 7.9            | 4.4   |
| English Language Learners Dropout Rate        | 19.5   | 16.8           | 14.9  |
| Low Income Dropout Rate                       | 14.6   | 11.8           | 10.2  |

†Percent of 2013 class

## Housing Affordability



## 10th Grade MCAS Scores in 2014



## Mortality and Health

|   | Lowell | Gateway Cities | State |
|---|--------|----------------|-------|
| Lung Cancer Deaths (per 100,000 people) †                         | 55.8   | 61.3           | 54.1  |
| Cardiovascular Disease Deaths (per 100,000) †                     | 224.0  | 254.7          | 237.4 |
| Opioid Overdose Deaths (per 100,000)‡                             | 28.2   | 25.5           | 13.0  |
| HIV/Aids Prevalence Rate (per 100,000 people) 2010†               | 443.5  | 317.0          | 282.3 |
| Admissions to DPH Substance Abuse Programs (per 100,000 people) ‡ | 2690   | 2189           | 1568  |
| Hospital Discharges for Asthma (per 100,000) 2009                 | 230.5  | 208.8          | 162.0 |
| Percent overweight or obese children in grade 10 ‡                | 34.5   | 38.2           | 32.3  |
| Percent of population on some form of non-private insurance 2013  | 37.6   | 36.1           | 17.2  |

†2010

‡2014



## Civic Engagement

### Voting Behavior in 2014

| Indicator  | Lowell | Gateway Cities | State |
|--|--------|----------------|-------|
| Registered voters as percent of population aged 18 and above       | 68.5   | 75.1           | 76.0  |
| Voters in 2014 election as percent of registered voters            | 37.0   | 43.5           | 72.7  |
| Voters in 2014 election as percent of population aged 18 and above | 25.3   | 32.8           | 55.2  |

### Not-for-Profit Sector

| Indicator (in \$ per capita)                           | Lowell | Gateway Cities | State  |
|--|--------|----------------|--------|
| Assets of Education, Finance, and Medical Non-Profits  | 20,146 | 10,152         | 27,527 |
| Assets of Other Non-Profits                            | 2,680  | 5,530          | 18,501 |
| Revenue of Education, Finance, and Medical Non-Profits | 5,646  | 4,361          | 10,472 |
| Revenue of Other Non-Profits                           | 1,626  | 3,050          | 10,589 |

### Major Nonprofits in Education, Finance and Health Services (in \$millions)

| Name                               | Revenues | Assets  | Area       |
|------------------------------------|----------|---------|------------|
| The Lowell General Hospital        | 445.57   | 485.46  | Healthcare |
| Jeanne Darc Credit Union           | 41.26    | 1026.01 | Financial  |
| Lowell Community Health Center Inc | 29.03    | 40.80   | Healthcare |
| Circle Health Physicians Inc       | 27.25    | 8.15    | Healthcare |
| Align Credit Union                 | 22.18    | 546.50  | Financial  |
| D'Youville Senior Care Inc         | 21.31    | 29.11   | Healthcare |
| Circle Home Inc                    | 12.29    | 6.48    | Healthcare |
| LGH Physician Associates Inc       | 5.66     | 1.76    | Healthcare |
| D'Youville Transitional Care Inc   | 4.91     | 13.02   | Healthcare |
| Lowell Firefighters Credit Union   | 0.58     | 16.51   | Financial  |

**Other Nonprofits** (in \$millions)

| Name  | Revenues | Assets | Area               |
|---|----------|--------|--------------------|
| Community Teamwork Inc 1                                  | 81.53    | 18.32  | Human Services     |
| New England Interstate Water Pollution Control Commission | 13.71    | 28.01  | Environment        |
| Mental Health Association of Greater Lowell Inc           | 6.63     | 1.34   | Mental Health      |
| D'Youville Leadership Solutions Inc                       | 4.32     | 1.74   | Public Benefit     |
| Acre Family Day Care Corporation                          | 4.25     | 2.08   | Human Services     |
| United Teen Equality Center                               | 4.06     | 9.43   | Youth Development  |
| Merrimack Valley Food Bank Inc                            | 3.71     | 1.46   | Food & Agriculture |
| Greater Lowell Community Foundation Inc                   | 3.34     | 27.22  | Philanthropy       |
| Lowell YMCA   | 3.15     | 4.68   | Human Services     |
| Lowell House Inc  | 2.41     | 1.30   | Mental Health      |
| House of Hope Inc   | 2.03     | 4.11   | Housing            |
| Merrimack Repertory Theatre                               | 1.91     | 2.72   | Arts & Culture     |
| American Textile History Museum                           | 1.83     | 8.63   | Arts & Culture     |
| Lowell Transitional Living Center Inc                     | 1.66     | 3.54   | Housing            |
| Longmeadow Golf Club                                      | 1.64     | 3.25   | Sports             |

Nonprofits with a strong associative component

Associative Nonprofits

Number of Organizations per 1,000 residents

