

2016

Data Profiles - Leominster

Mosakowski Institute
Clark University

John C. Brown
Clark University

Joe Krahe
Clark University

Sarah Philbrick
Clark University

Recommended Citation

Mosakowski Institute; Brown, John C.; Krahe, Joe; and Philbrick, Sarah, "Data Profiles - Leominster" (2016). *Mosakowski Institute for Public Enterprise*. 53.

<https://commons.clarku.edu/mosakowskiinstitute/53>

This Article is brought to you for free and open access by the Academic Departments, Centers & Programs at Clark Digital Commons. It has been accepted for inclusion in Mosakowski Institute for Public Enterprise by an authorized administrator of Clark Digital Commons. For more information, please contact mkrikonis@clarku.edu, jodolan@clarku.edu.

Data Profiles - Leominster

Keywords

data profiles, leominster, gateway cities, working cities

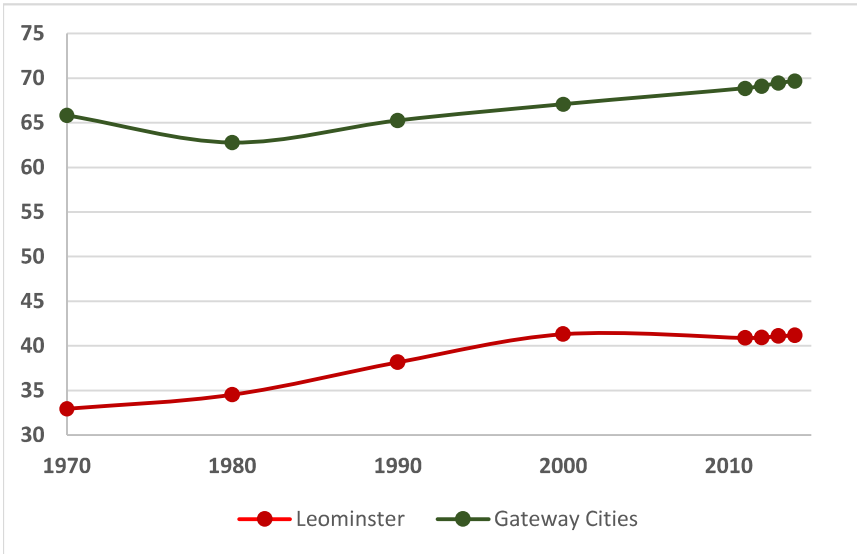


Leominster

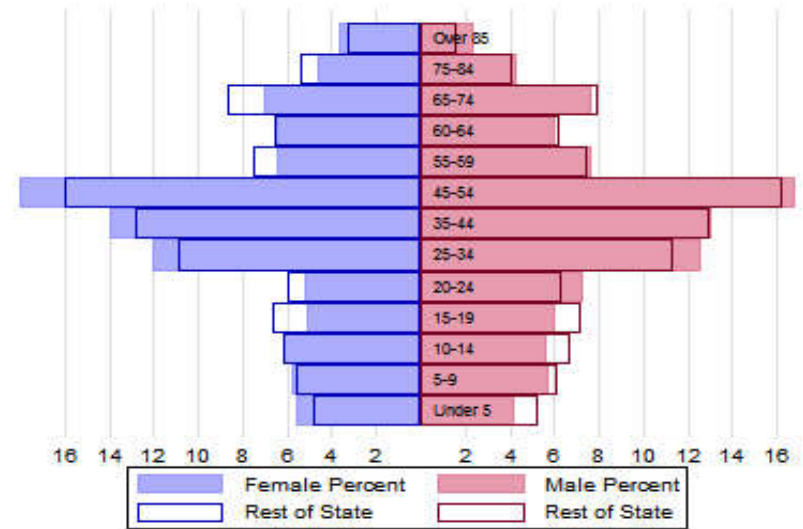


The Population

City Population 1970 to 2014



Population Distribution by Age Group



Population Distribution by Race and Ethnicity

Subgroups of the population as a percent of the total	2000	2013	Gateway Cities 2013	State 2013
White	87.1	81.8	73.8	89.0
Black	3.7	5.5	8.0	2.8
Asian	2.4	2.7	5.3	4.8
Foreign-born	10.4	12.6	19.9	12.1
Hispanic	11.0	14.5	19.6	4.3
Origin as percent of Hispanic				
Central America	2.4	5.4	15.8	20.3
Dominican Republic	4.2	7.7	14.4	17.9
Mexico	5.4	4.8	5.5	11.4
Puerto Rico	62.6	54.9	45.5	33.6

Recent Demographic Behavior

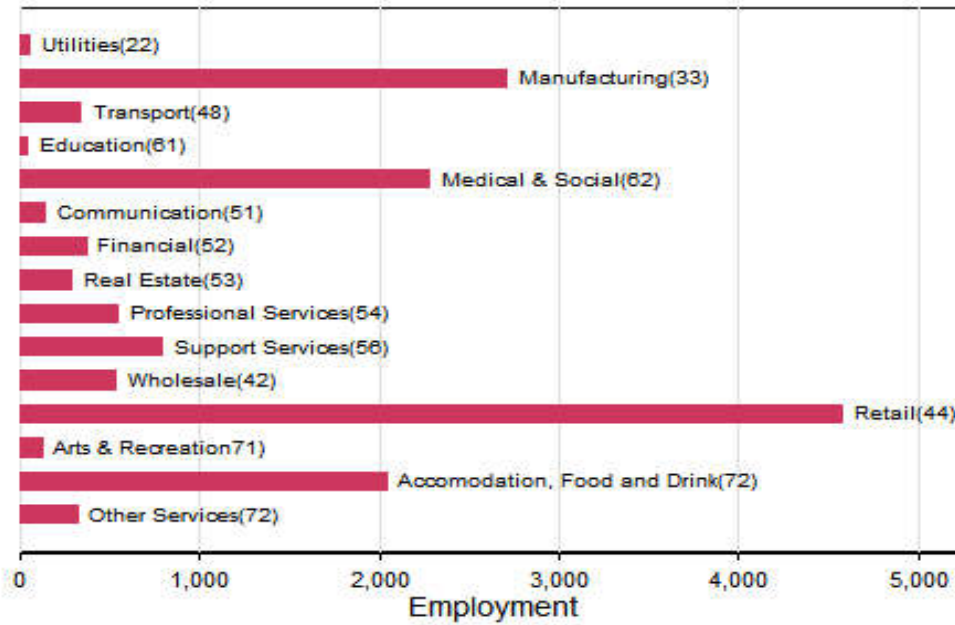
Indicator	Leominster	Gateway Cities	State
Birth Rate (per 1,000 females 15-44)	63.5	62.1	52.8
Low birthweight (<2.5 kg. % of births)	8.0	8.0	7.7
Births to teen mothers (15-19 years)†	6.2	6.0	3.8
Birth rate of teen mothers‡	NA	22.3	12.0
Infant mortality (per 1,000 live births)	NA	4.9	4.4
Mortality rate (per 100,000 residents)	865	844.9	800.0

†As percent of all births

‡Per 1,000 females aged 15-19 years

The Local Economy

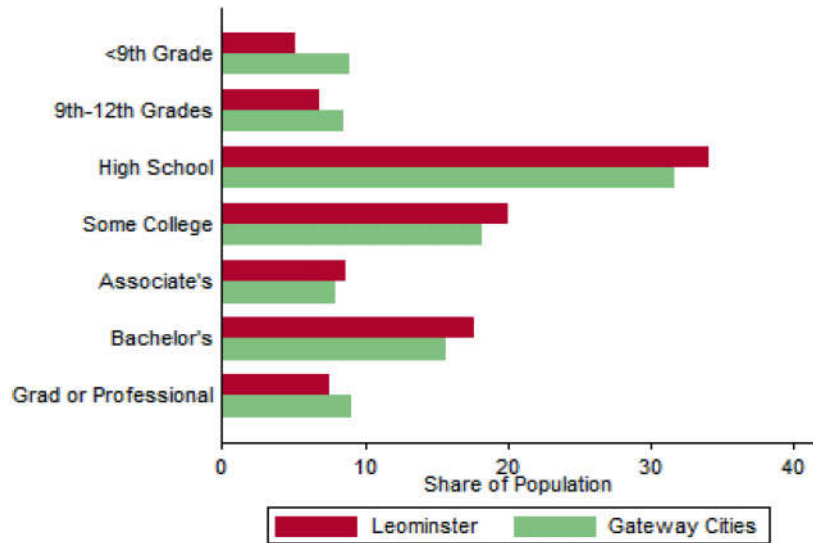
Employment by Major Sectors: 2012 (2-digit NAICS)



The Five Largest Industries: 2012 (4-digit NAICS industries)

Description	NAICS	Employment
Grocery Stores	4451	1000-2499
Restaurants	7225	1000-2499
Plastics Manufacturing	3261	500-999
Employment Services	5613	500-999
General Merchandise Stores	4529	250-499

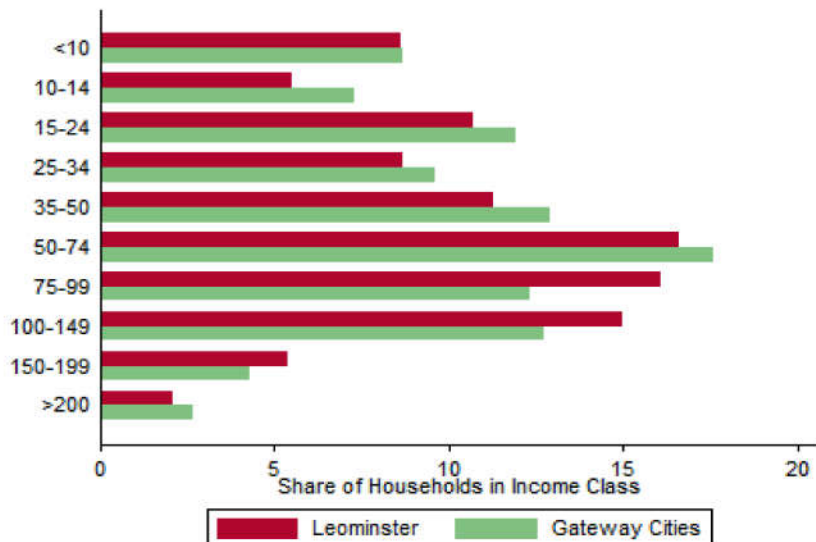
Educational Attainment of the Population Aged 25 and Older



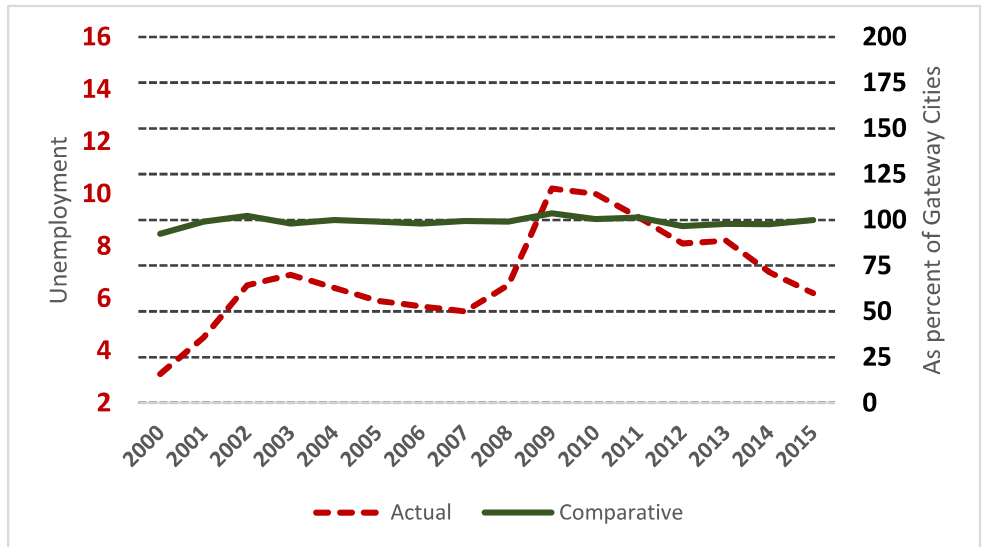
Key Indicators of Income and Commuting

Indicator	Leominster	Gateway Cities
Median Family Income (\$)	59,095	60,087
Families below Poverty Line (%)	9.5	14.3
Children < 18 below Poverty Line (%)	13.5	25.5
Families with Food Assistance (%)	11.3	20.8
Mean Travel Time to Work (Mins.)	27.4	26.4
Commute with Public Transit (%)	1.3	8.6

Distribution of Households by Income Class (in \$1,000)



Unemployment Rate: 2000-2015



Housing

Housing Market Indicators in 2013

Indicator	Leominster	Gateway Cities	State
Share owner-occupied	0.54	0.50	0.62
Median Home Value	227,300	252,085	325,800
Average Rent for Studio	677	735	746
Average Rent for One-Bedroom	692	786	765
Average Rent for Two-Bedroom	1062	1097	926
Average Rent for Three-Bedroom	1250	1182	863
Average Size of Owner-Occupied Households	2.14	2.68	2.25
Average Size of Tenant Households	2.67	2.38	2.70

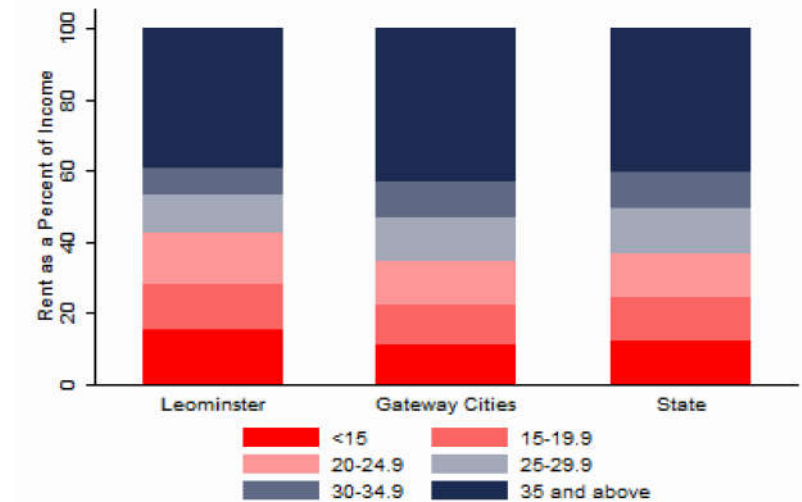
Education

Indicators for 2014

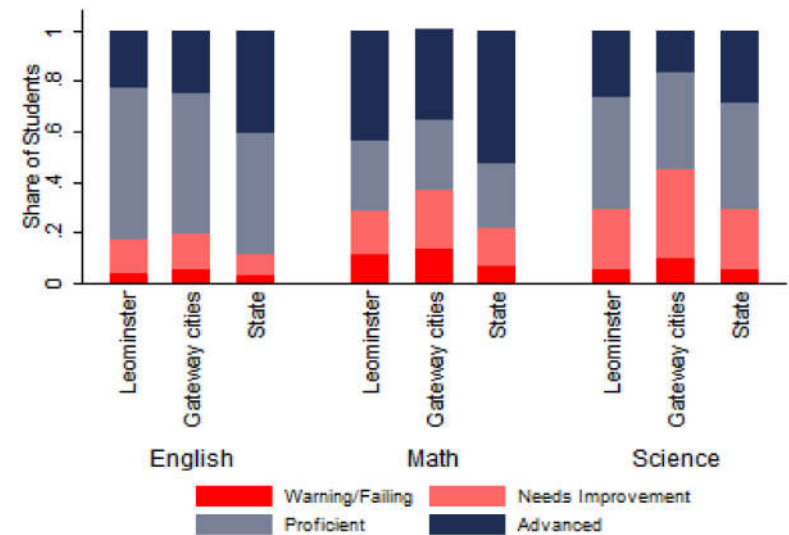
Indicator	Leominster	Gateway Cities	State
Average class size	17	18.3	18.1
Percent Proficient or Advanced (English 10th)	83.0	80.3	90.0
Percent Proficient or Advanced (Math 10th)	71.0	63.4	79.0
Student Growth Percentile English (10th)	40.0	43.7	51.0
Student Growth Percentile Math (10th)	45.0	43.4	50.0
Graduates attending college or university†	73.7	69.7	76.6
Male Dropout Rate	4.4	11.8	6.7
Female Dropout Rate	1.8	7.9	4.4
English Language Learners Dropout Rate	11.1	16.8	14.9
Low Income Dropout Rate	4.5	11.8	10.2

†Percent of 2013 class

Housing Affordability



10th Grade MCAS Scores in 2014



Mortality and Health

	Leominster	Gateway Cities	State
Lung Cancer Deaths (per 100,000 people) †	71.1	61.3	54.1
Cardiovascular Disease Deaths (per 100,000) †	257.3	254.7	237.4
Opioid Overdose Deaths (per 100,000)‡	19.4	25.5	13.0
HIV/Aids Prevalence Rate (per 100,000 people) 2010†	163.8	317.0	282.3
Admissions to DPH Substance Abuse Programs (per 100,000 people) ‡	1423	2189	1568
Hospital Discharges for Asthma (per 100,000) 2009	191.1	208.8	162.0
Percent overweight or obese children in grade 10 ‡	37.4	38.2	32.3
Percent of population on some form of non-private insurance 2013	27.7	36.1	17.2

†2010

‡2014

Civic Engagement

Voting Behavior in 2014

Indicator	Leominster	Gateway Cities	State
Registered voters as percent of population aged 18 and above	79.3	75.1	76.0
Voters in 2014 election as percent of registered voters	48.6	43.5	72.7
Voters in 2014 election as percent of population aged 18 and above	38.6	32.8	55.2

Not-for-Profit Sector

Indicator (in \$ per capita)	Leominster	Gateway Cities	State
Assets of Education, Finance, and Medical Non-Profits	15,594	10,152	27,527
Assets of Other Non-Profits	877	5,530	18,501
Revenue of Education, Finance, and Medical Non-Profits	1,049	4,361	10,472
Revenue of Other Non-Profits	323	3,050	10,589

Major Nonprofits in Education, Finance and Health Services (in \$millions)

Name	Revenues	Assets	Area
Leominster Credit Union	24.96	621.73	Financial
Montachusett Home Care Corp	16.06	8.18	Healthcare
HealthAlliance Realty Corporation	1.74	7.87	Healthcare
Child Medical Connection Inc	0.12	0.09	Healthcare
Health Alliance Guild	0.04	0.14	Healthcare

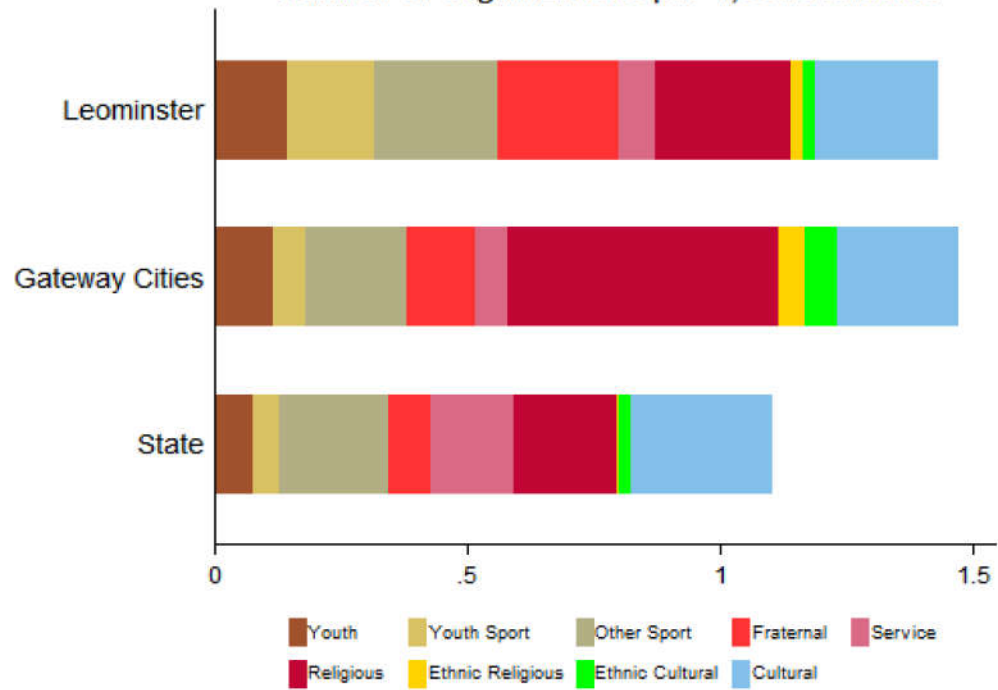
Other Nonprofits (in \$millions)

Name	Revenues	Assets	Area
Employment Links Inc	2.17	0.35	Philanthropy
Boys & Girls Club of Fitchburg & Leominster-A Non Profit Educationa	0.90	6.92	Youth Development
Ronald M Ansin Foundation	0.84	1.78	Philanthropy
Retail Wholesale & Department Store Union	0.79	0.26	Employment
North Central Massachusetts Work Force Investment Board	0.69	0.38	Employment
Leominster Telecommunications Corp Inc	0.63	1.71	Public Benefit
Spanish American Center Inc	0.56	0.60	Human Services
Church of Framingham Inc	0.44	0.03	Religion-Related
Towing and Recovery Association of America Inc	0.34	0.07	Community Improvement
Twin City Youth Hockey Association Inc	0.28	0.03	Sports
Leominster Development Corporation	0.26	3.36	Community Improvement
Benevolent & Protective Order of Elks of the USA	0.26	0.37	Membership Benefit
Porsche Club of America Northeast Region Inc	0.26	0.15	Sports
Friends of Sholan Farms	0.24	0.26	Food & Agriculture
Franco Veterans Club Inc	0.23	0.16	Public Benefit

Nonprofits with a strong associative component

Associative Nonprofits

Number of Organizations per 1,000 residents



Leominster