

2016

## Data Profiles - Fitchburg

Mosakowski Institute  
*Clark University*

John C. Brown  
*Clark University*

Joe Krahe  
*Clark University*

Sarah Philbrick  
*Clark University*

---

### Recommended Citation

Mosakowski Institute; Brown, John C.; Krahe, Joe; and Philbrick, Sarah, "Data Profiles - Fitchburg" (2016). *Mosakowski Institute for Public Enterprise*. 57.

<https://commons.clarku.edu/mosakowskiinstitute/57>

This Article is brought to you for free and open access by the Academic Departments, Centers & Programs at Clark Digital Commons. It has been accepted for inclusion in Mosakowski Institute for Public Enterprise by an authorized administrator of Clark Digital Commons. For more information, please contact [mkrikonis@clarku.edu](mailto:mkrikonis@clarku.edu), [jodolan@clarku.edu](mailto:jodolan@clarku.edu).

---

## Data Profiles - Fitchburg

### **Keywords**

data profiles, fitchburg, gateway cities, working cities

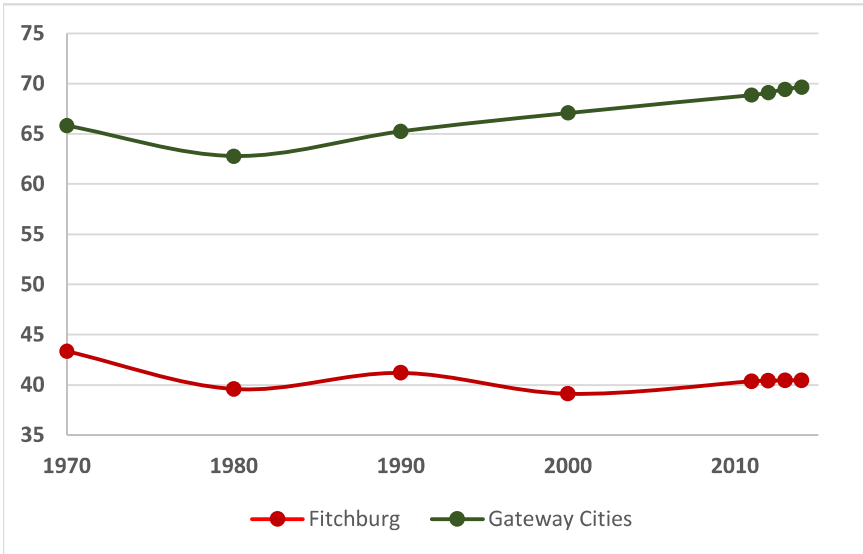


Fitchburg

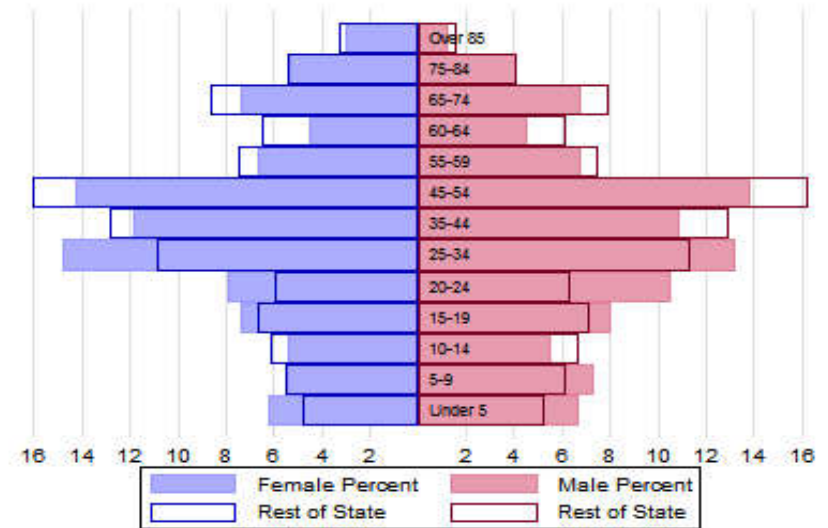


# The Population

## City Population 1970 to 2014



## Population Distribution by Age Group



## Population Distribution by Race and Ethnicity

Subgroups of the population as a percent of the total	2000	2013	Gateway Cities 2013	State 2013
White	81.9	78.8	73.8	89.0
Black	3.6	4.2	8.0	2.8
Asian	4.3	4.2	5.3	4.8
Foreign-born	8.3	11.5	19.9	12.1
Hispanic	15.0	21.6	19.6	4.3
<b>Origin as percent of Hispanic</b>				
Central America	1.2	2.7	15.8	20.3
Dominican Republic	4.9	8.1	14.4	17.9
Mexico	6.7	6.3	5.5	11.4
Puerto Rico	71.8	67.3	45.5	33.6

## Recent Demographic Behavior

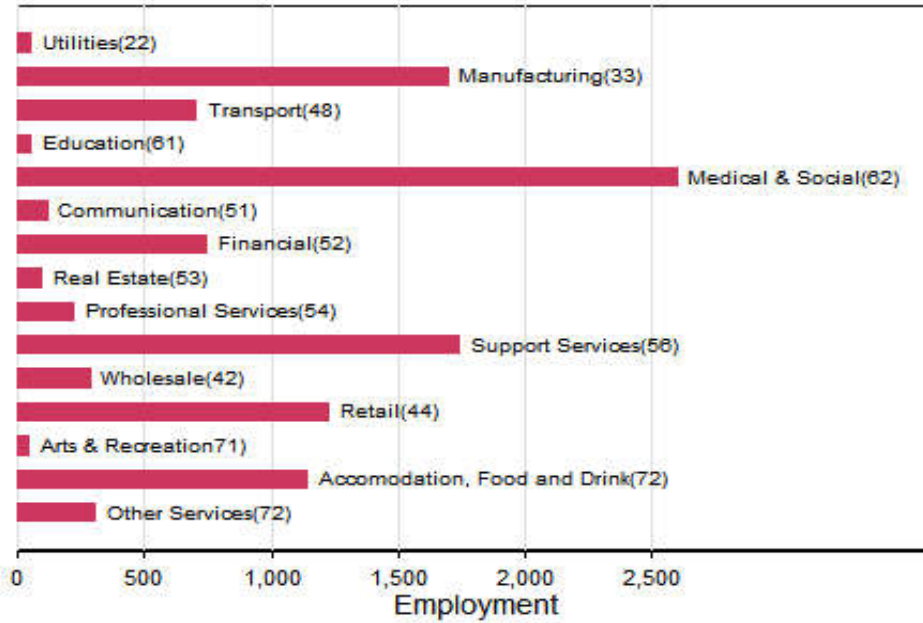
Indicator	Fitchburg	Gateway Cities	State
Birth Rate (per 1,000 females 15-44)	56.8	62.1	52.8
Low birthweight (<2.5 kg. % of births)	10.1	8.0	7.7
Births to teen mothers (15-19 years)†	8.0	6.0	3.8
Birth rate of teen mothers‡		22.3	12.0
Infant mortality (per 1,000 live births)	9.2	4.9	4.4
Mortality rate (per 100,000 residents)	875	844.9	800.0

†As percent of all births

‡Per 1,000 females aged 15-19 years

# The Local Economy

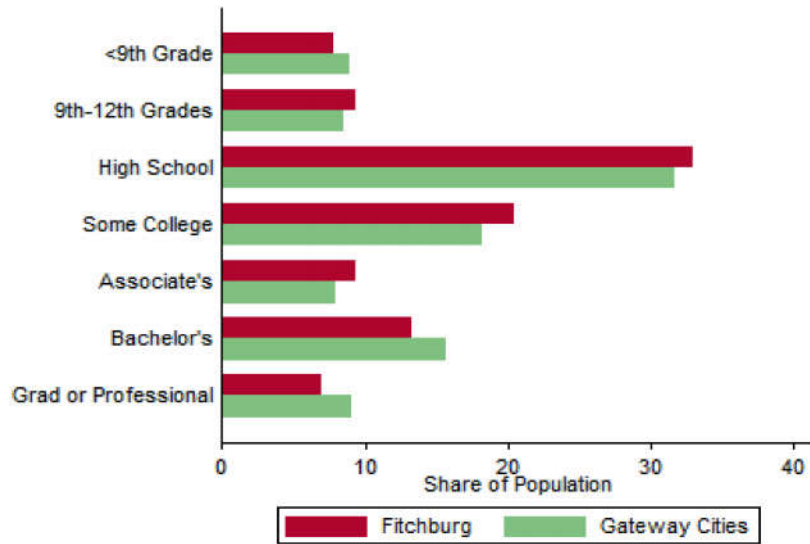
## Employment by Major Sectors: 2012 (2-digit NAICS)



## The Five Largest Industries: 2012 (4-digit NAICS industries)

Description	NAICS	Employment
Employment Services	5613	1000-2499
Restaurants	7225	500-999
Individual and Family Services	6241	500-999
Skilled Nursing Facilities	6231	500-999
Depository Credit Intermediation	5221	250-499

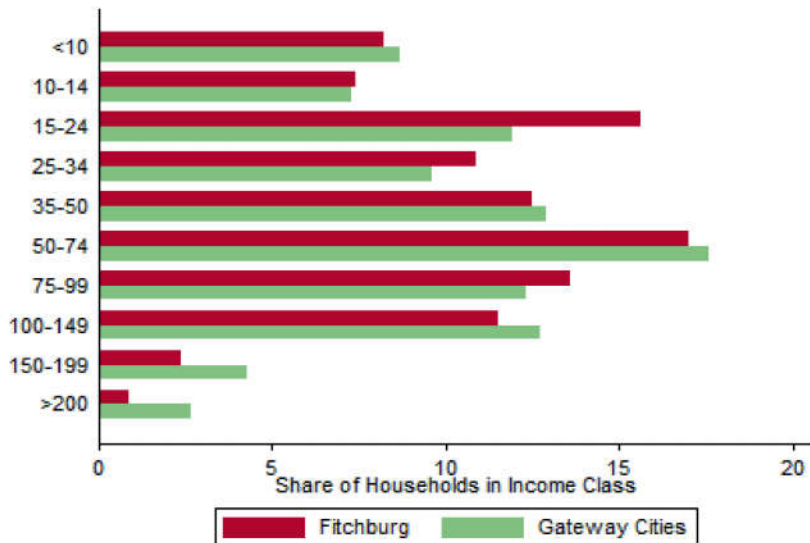
### Educational Attainment of the Population Aged 25 and Older



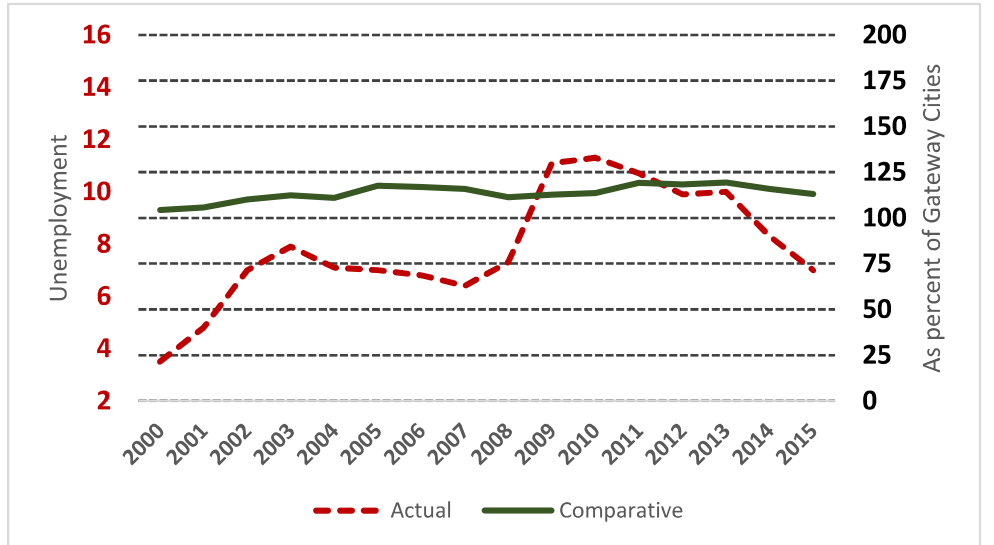
### Key Indicators of Income and Commuting

Indicator	Fitchburg	Gateway Cities
Median Family Income (\$)	44,312	60,087
Families below Poverty Line (%)	15.6	14.3
Children < 18 below Poverty Line (%)	30.7	25.5
Families with Food Assistance (%)	23.1	20.8
Mean Travel Time to Work (Mins.)	25.1	26.4
Commute with Public Transit (%)	1.8	8.6

### Distribution of Households by Income Class (in \$1,000)



### Unemployment Rate: 2000-2015



# Housing

## Housing Market Indicators in 2013

Indicator	Fitchburg	Gateway Cities	State
Share owner-occupied	0.55	0.50	0.62
Median Home Value	178,700	252,085	325,800
Average Rent for Studio	502	735	746
Average Rent for One-Bedroom	555	786	765
Average Rent for Two-Bedroom	805	1097	926
Average Rent for Three-Bedroom	837	1182	863
Average Size of Owner-Occupied Households	2.42	2.68	2.25
Average Size of Tenant Households	2.67	2.38	2.70

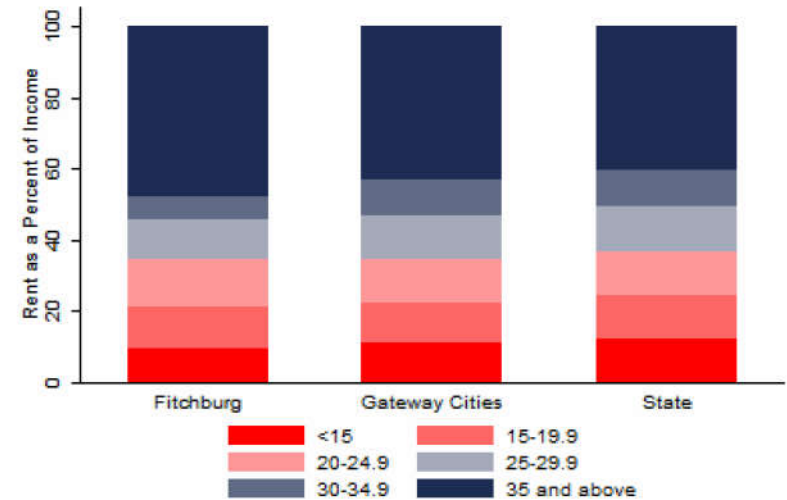
# Education

## Indicators for 2014

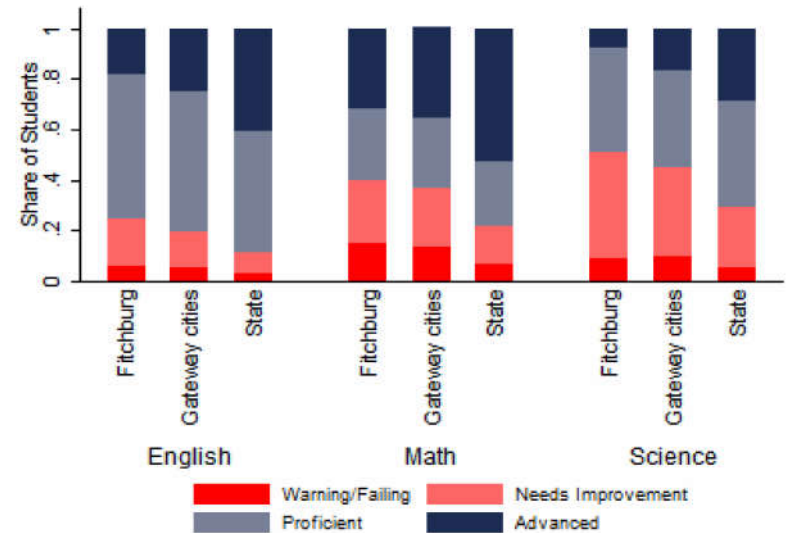
Indicator	Fitchburg	Gateway Cities	State
Average class size	17.4	18.3	18.1
Percent Proficient or Advanced (English 10th)	75.0	80.3	90.0
Percent Proficient or Advanced (Math 10th)	60.0	63.4	79.0
Student Growth Percentile English (10th)	43.0	43.7	51.0
Student Growth Percentile Math (10th)	46.0	43.4	50.0
Graduates attending college or university†	49.2	69.7	76.6
Male Dropout Rate	12.1	11.8	6.7
Female Dropout Rate	10.3	7.9	4.4
English Language Learners Dropout Rate	26.1	16.8	14.9
Low Income Dropout Rate	13.0	11.8	10.2

†Percent of 2013 class

## Housing Affordability



## 10th Grade MCAS Scores in 2014



## Mortality and Health

	Fitchburg	Gateway Cities	State
Lung Cancer Deaths (per 100,000) †	54.5	61.3	54.1
Cardiovascular Disease Deaths (per 100,000) †	277.5	254.7	237.4
Opioid Overdose Deaths (per 100,000)‡	19.8	25.5	13.0
HIV/Aids Prevalence Rate (per 100,000) 2010†	246.8	317.0	282.3
Admissions to DPH Substance Abuse Programs (per 100,000) ‡	1779	2189	1568
Hospital Discharges for Asthma (per 100,000) 2009	235.4	208.8	162.0
Percent overweight or obese children in grade 10 ‡	44.6	38.2	32.3
Percent of population on some form of non-private insurance 2013	36.1	36.1	17.2

†2010

‡2014



## Civic Engagement

### Voting Behavior in 2014

Indicator	Fitchburg	Gateway Cities	State
Registered voters as percent of population aged 18 and above	67.7	75.1	76.0
Voters in 2014 election as percent of registered voters	42.4	43.5	72.7
Voters in 2014 election as percent of population aged 18 and above	28.7	32.8	55.2

### Not-for-Profit Sector

Indicator (in \$ per capita)	Fitchburg	Gateway Cities	State
Assets of Education, Finance, and Medical Non-Profits	26,517	10,152	27,527
Assets of Other Non-Profits	4,411	5,530	18,501
Revenue of Education, Finance, and Medical Non-Profits	1,814	4,361	10,472
Revenue of Other Non-Profits	1,891	3,050	10,589

### Major Nonprofits in Education, Finance and Health Services (in \$millions)

Name	Revenues	Assets	Area
Workers Credit Union	50.51	1038.01	Financial
Community Health Connections Inc	22.68	27.60	Healthcare

**Other Nonprofits** (in \$millions)

Name	Revenues	Assets	Area
Montachusett Opportunity Council Inc	16.54	4.55	Human Services
LUK Crisis Center Inc	15.42	5.15	Human Services
The Arc of Opportunity in North Central Massachusetts Inc	11.30	9.35	Human Services
Community Foundation of North Central Massachusetts Inc	6.66	37.71	Philanthropy
Applewild School	4.33	15.59	Education
United Way of North Central Mass Inc	3.30	3.59	Philanthropy
Oak Hill Country Club	2.39	4.49	Sports
Fitchburg State University Foundation Inc	1.59	16.32	Education
Twin Cities Community Development Corporation	1.59	8.81	Housing
Veteran Homestead Inc	1.48	11.33	Human Services
Our Fathers House Inc	1.41	0.58	Housing
Fitchburg Art Museum	1.11	22.15	Arts & Culture
North Central Massachusetts Chamber of Commerce Inc	0.90	1.58	Community Improvement
Sanskar Culture Society	0.89	0.86	Religion-Related
First Parish Housing of Fitchburg Inc	0.86	2.58	Housing

Nonprofits with a strong associative component

### Associative Nonprofits

Number of Organizations per 1,000 residents

