

2016

Data Profiles - Fall River

Mosakowski Institute
Clark University

John C. Brown
Clark University

Joe Krahe
Clark University

Sarah Philbrick
Clark University

Recommended Citation

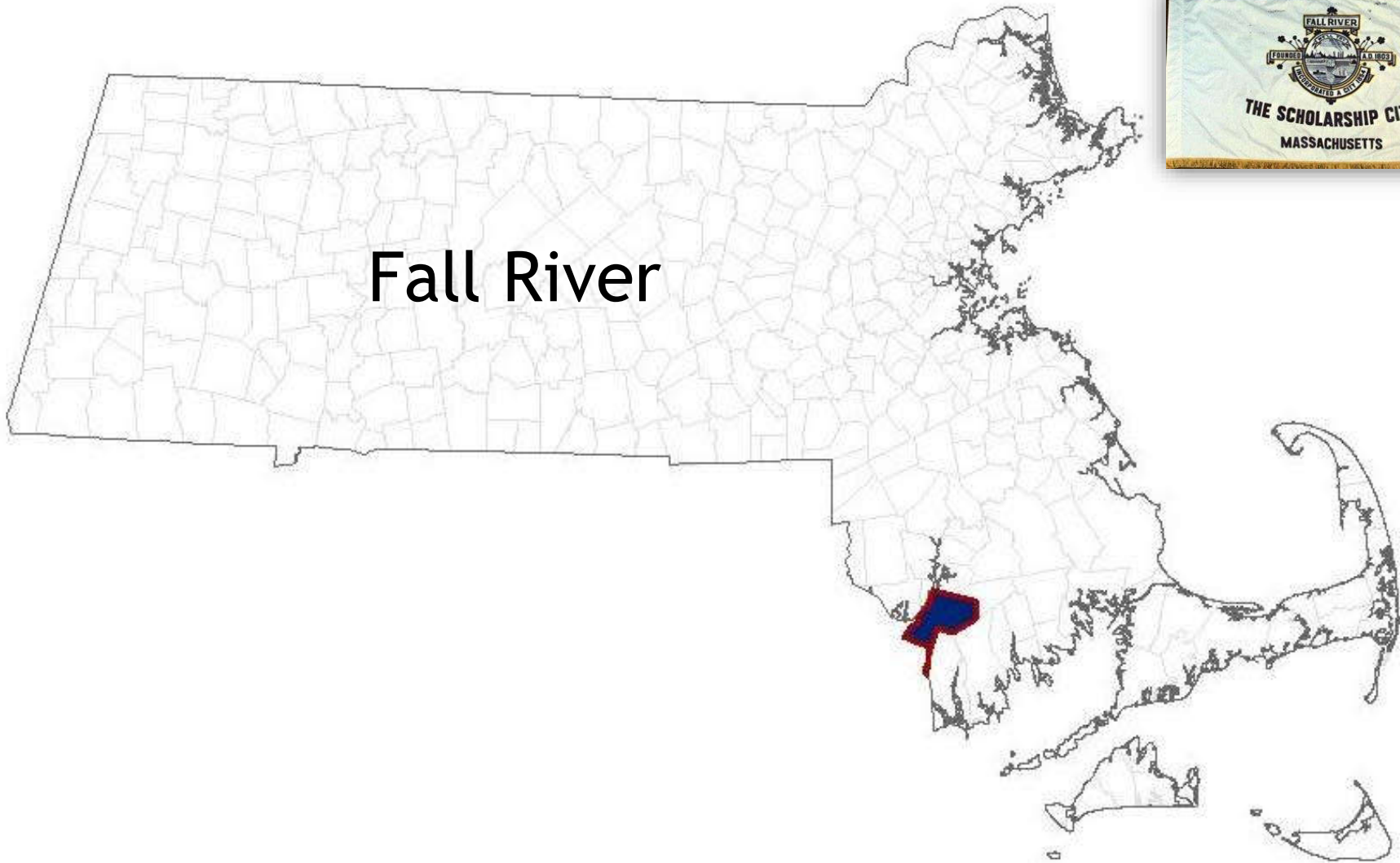
Mosakowski Institute; Brown, John C.; Krahe, Joe; and Philbrick, Sarah, "Data Profiles - Fall River" (2016). *Mosakowski Institute for Public Enterprise*. 58.
<https://commons.clarku.edu/mosakowskiinstitute/58>

This Article is brought to you for free and open access by the Academic Departments, Centers & Programs at Clark Digital Commons. It has been accepted for inclusion in Mosakowski Institute for Public Enterprise by an authorized administrator of Clark Digital Commons. For more information, please contact mkrikonis@clarku.edu, jodolan@clarku.edu.

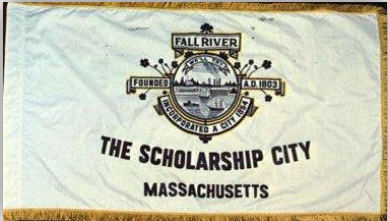
Data Profiles - Fall River

Keywords

data profiles, fall river, gateway cities, working cities

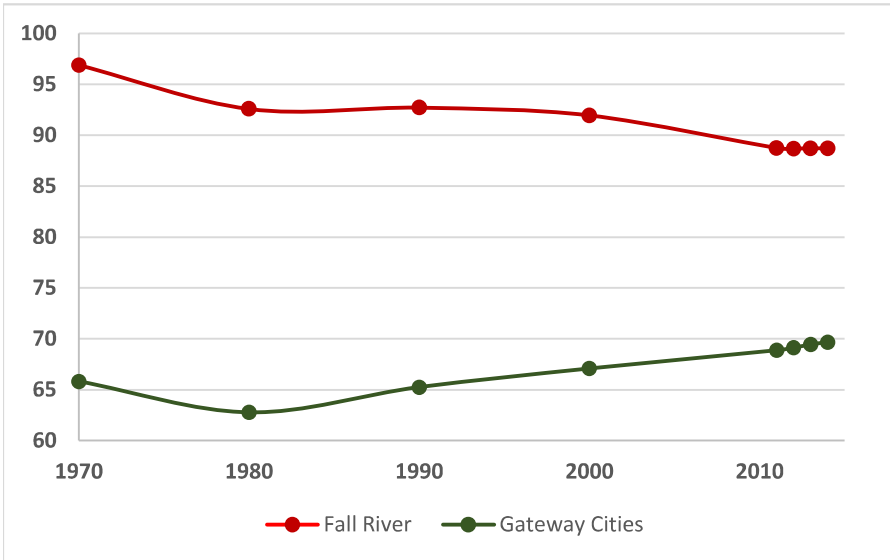


Fall River

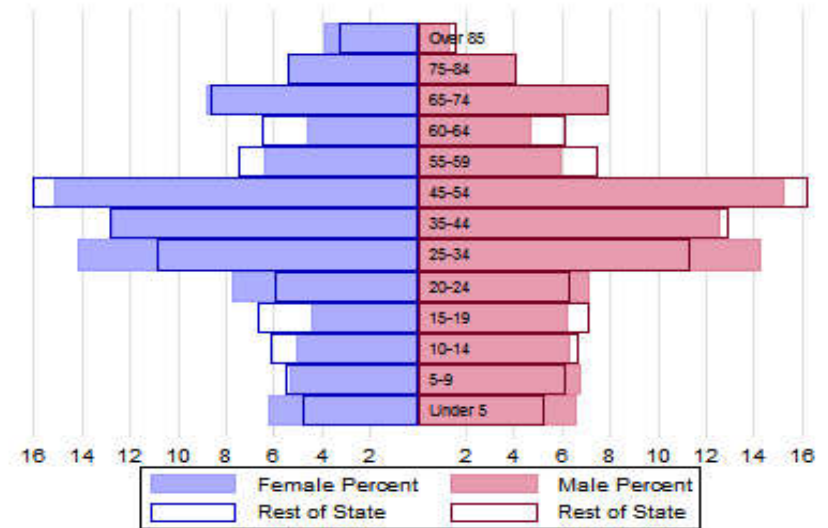


The Population

City Population 1970 to 2014



Population Distribution by Age Group



Population Distribution by Race and Ethnicity

Subgroups of the population as a percent of the total	2000	2013	Gateway Cities 2013	State 2013
White	91.2	87.3	73.8	89.0
Black	2.5	3.6	8.0	2.8
Asian	2.2	2.3	5.3	4.8
Foreign-born	19.8	19.0	19.9	12.1
Hispanic	3.3	7.4	19.6	4.3
Origin as percent of Hispanic				
Central America	2.2	5.5	15.8	20.3
Dominican Republic	3.7	6.4	14.4	17.9
Mexico	5.9	4.9	5.5	11.4
Puerto Rico	64.0	67.1	45.5	33.6

Recent Demographic Behavior

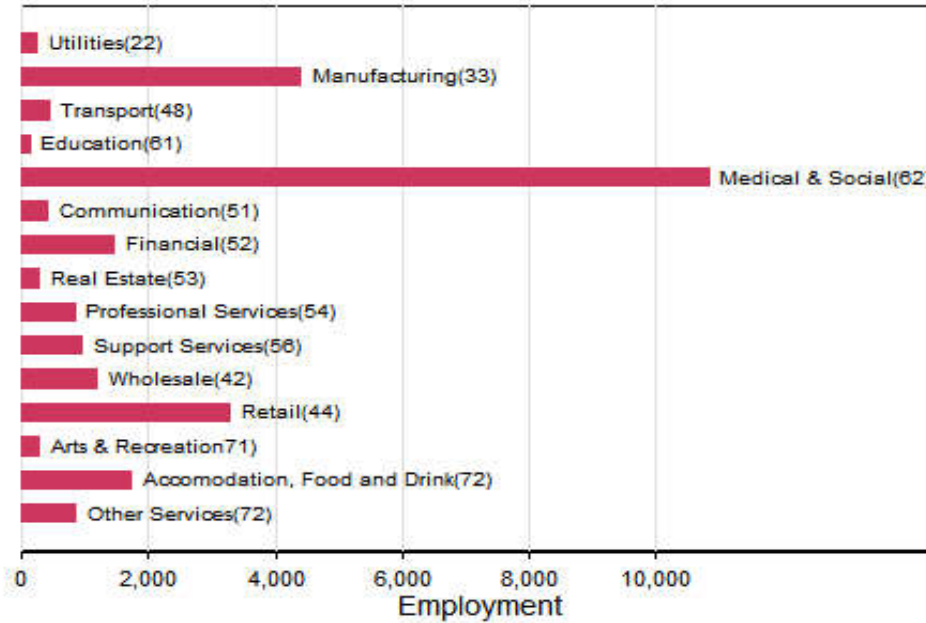
Indicator	Fall River	Gateway Cities	State
Birth Rate (per 1,000 females 15-44)	57.8	62.1	52.8
Low birthweight (<2.5 kg. % of births)	8.9	8.0	7.7
Births to teen mothers (15-19 years)†	8.3	6.0	3.8
Birth rate of teen mothers‡	32.0	22.3	12.0
Infant mortality (per 1,000 live births)	5.2	4.9	4.4
Mortality rate (per 100,000 residents)	1117	844.9	800.0

†As percent of all births

‡Per 1,000 females aged 15-19 years

The Local Economy

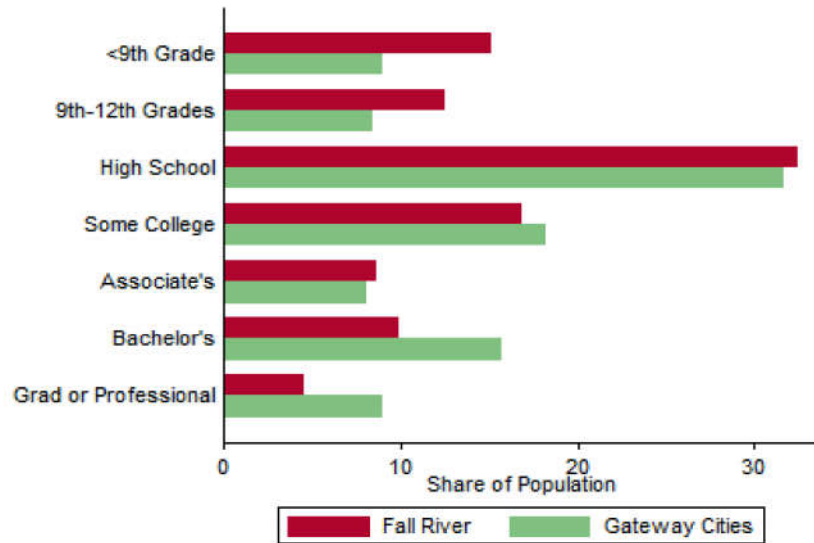
Employment by Major Sectors: 2012 (2-digit NAICS)



The Five Largest Industries: 2012 (4-digit NAICS industries)

Description	NAICS	Employment
General Hospitals	6221	2500-4999
Individual and Family Services	6241	1000-2499
Physicians Offices	6211	1000-2499
Restaurants	7225	1000-2499
Skilled Nursing Facilities	6231	1000-2499

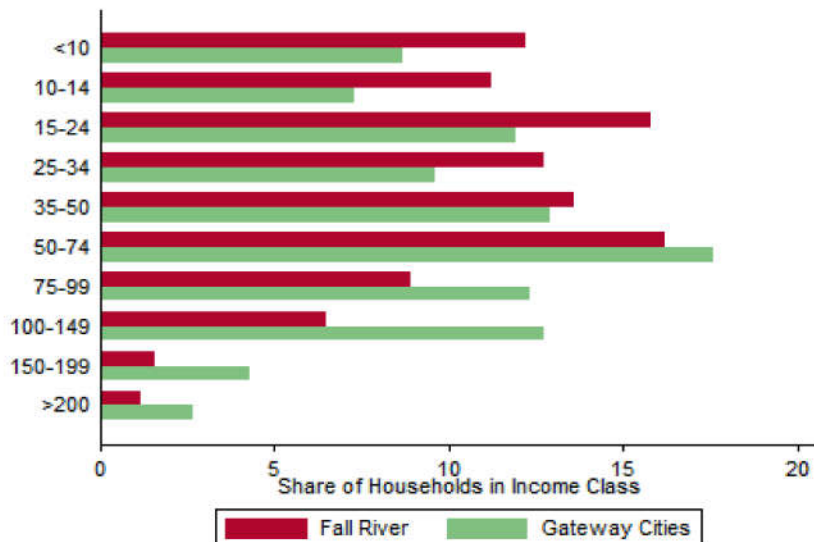
Educational Attainment of the Population Aged 25 and Older



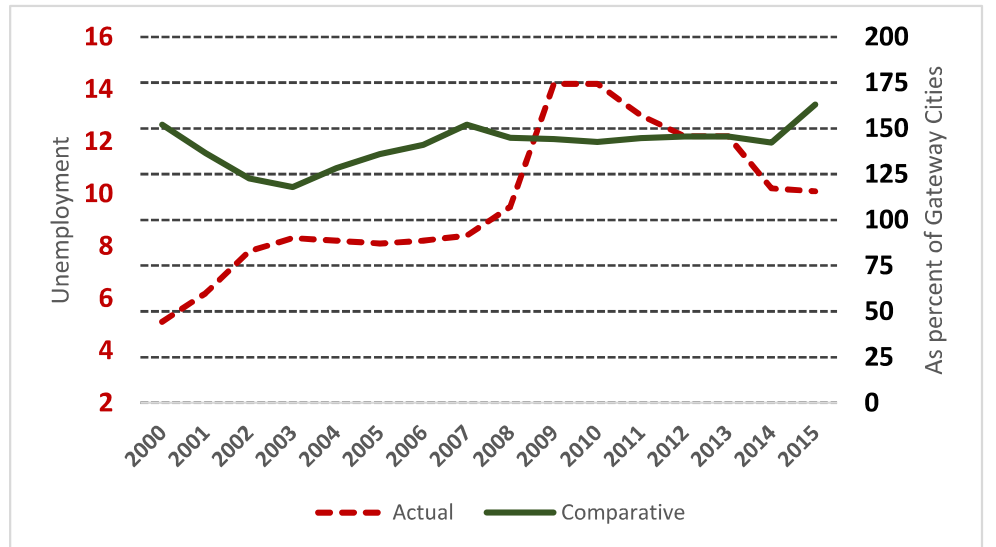
Key Indicators of Income and Commuting

Indicator	Fall River	Gateway Cities
Median Family Income (\$)	33,416	60,087
Families below Poverty Line (%)	19.8	14.3
Children < 18 below Poverty Line (%)	37.5	25.5
Families with Food Assistance (%)	29.7	20.8
Mean Travel Time to Work (Mins.)	23.3	26.4
Commute with Public Transit (%)	1.5	8.6

Distribution of Households by Income Class (in \$1,000)



Unemployment Rate: 2000-2015



Housing

Housing Market Indicators in 2013

Indicator	Fall River	Gateway Cities	State
Share owner-occupied	0.36	0.50	0.62
Median Home Value	233,000	252,085	325,800
Average Rent for Studio	899	735	746
Average Rent for One-Bedroom	1079	786	765
Average Rent for Two-Bedroom	1316	1097	926
Average Rent for Three-Bedroom	1306	1182	863
Average Size of Owner-Occupied Households	2.11	2.68	2.25
Average Size of Tenant Households	2.56	2.38	2.70

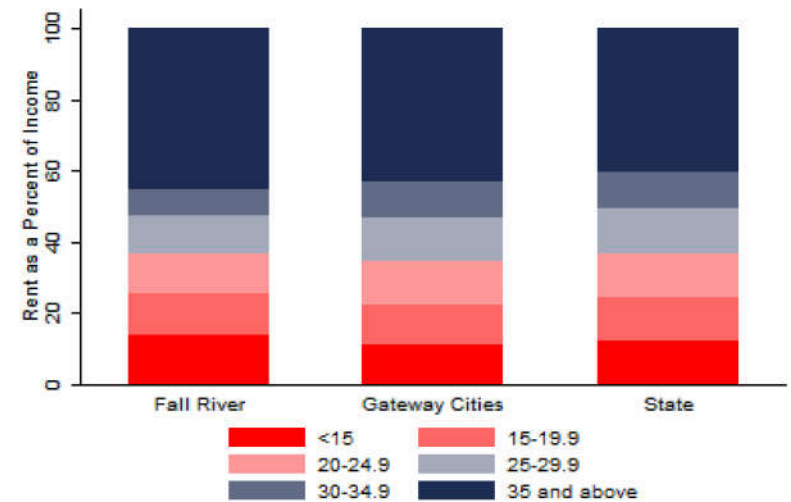
Education

Indicators for 2014

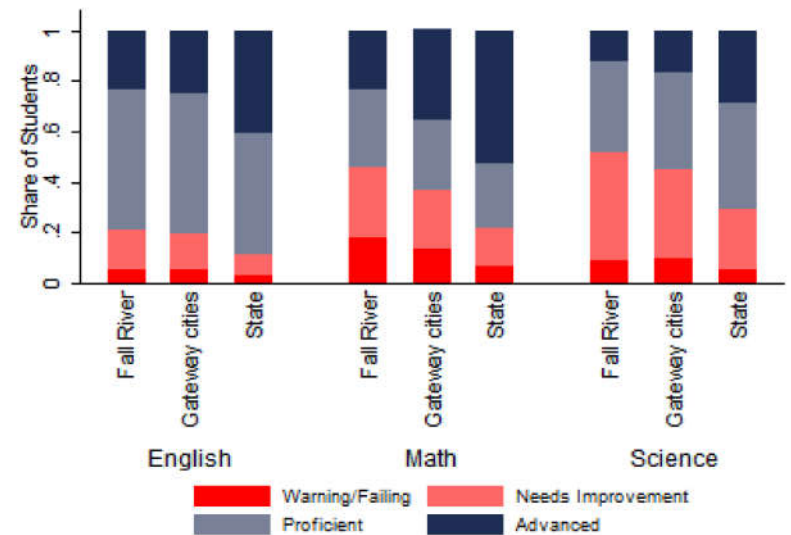
Indicator	Fall River	Gateway Cities	State
Average class size	19.4	18.3	18.1
Percent Proficient or Advanced (English 10th)	78.0	80.3	90.0
Percent Proficient or Advanced (Math 10th)	54.0	63.4	79.0
Student Growth Percentile English (10th)	41.0	43.7	51.0
Student Growth Percentile Math (10th)	27.0	43.4	50.0
Graduates attending college or university†	61.0	69.7	76.6
Male Dropout Rate	17.9	11.8	6.7
Female Dropout Rate	12.4	7.9	4.4
English Language Learners Dropout Rate	14.8	16.8	14.9
Low Income Dropout Rate	17.2	11.8	10.2

†Percent of 2013 class

Housing Affordability



10th Grade MCAS Scores in 2014



Mortality and Health

	Fall River	Gateway Cities	State
Lung Cancer Deaths (per 100,000 people) †	60.7	61.3	54.1
Cardiovascular Disease Deaths (per 100,000) †	368.7	254.7	237.4
Opioid Overdose Deaths (per 100,000)‡	38.3	25.5	13.0
HIV/Aids Prevalence Rate (per 100,000 people) 2010†	236.7	317.0	282.3
Admissions to DPH Substance Abuse Programs (per 100,000 people) ‡	3958	2189	1568
Hospital Discharges for Asthma (per 100,000) 2009	322.6	208.8	162.0
Percent overweight or obese children in grade 10 ‡	50.6	38.2	32.3
Percent of population on some form of non-private insurance 2013	44.1	36.1	17.2

†2010

‡2014

Civic Engagement

Voting Behavior in 2014

Indicator	Fall River	Gateway Cities	State
Registered voters as percent of population aged 18 and above	71.8	75.1	76.0
Voters in 2014 election as percent of registered voters	34.5	43.5	72.7
Voters in 2014 election as percent of population aged 18 and above	24.8	32.8	55.2

Not-for-Profit Sector

Indicator (in \$ per capita)	Fall River	Gateway Cities	State
Assets of Education, Finance, and Medical Non-Profits	12,287	10,152	27,527
Assets of Other Non-Profits	2,886	5,530	18,501
Revenue of Education, Finance, and Medical Non-Profits	843	4,361	10,472
Revenue of Other Non-Profits	2,085	3,050	10,589

Major Nonprofits in Education, Finance and Health Services (in \$millions)

Name	Revenues	Assets	Area
St Annes Credit Union of Fall River Mass	27.85	821.97	Financial
Catholic Memorial Home	22.39	13.82	Healthcare
Fall River Municipal Employees Credit Union	7.29	215.41	Financial
Healthfirst Family Care Center Inc	6.56	13.52	Healthcare
Fall River Jewish Home Inc	5.61	2.46	Healthcare
Home for Aged People in Fall River	4.00	9.13	Healthcare
Jewish Omni Services Inc	0.58	8.10	Healthcare
Auxiliary of Charlton Memorial Hospital	0.23	0.20	Healthcare
Charlton Long Term Care Services Inc	0.18	4.34	Healthcare
Fly Foundation	0.10	0.12	Healthcare

Other Nonprofits (in \$millions)

Name	Revenues	Assets	Area
Bristol Elder Services Inc	26.42	9.85	Human Services
Citizens for Citizens Inc	25.26	7.74	Community Improvement
People Incorporated	24.74	16.27	Human Services
Family Service Association of Greater Fall River Inc	18.47	16.13	Human Services
Stanley Street Treatment and Resources	18.34	9.36	Mental Health
Roman Catholic Bishop Fall River St Vincents Home Corp	10.60	5.60	Human Services
Fall River Deaconess Home	6.32	5.58	Mental Health
Catholic Social Services of Fall River Inc	5.81	2.60	Human Services
Steppingstone Inc	5.33	0.95	Mental Health
South Coastal Counties Legal Services Inc	4.58	3.38	Crime & Law
USS Massachusetts Memorial Commission Inc	2.58	9.10	Arts & Culture
John E Boyd Center for Child Care & Development	2.07	2.80	Human Services
Thomas A Rodgers Jr Family Foundation	1.94	27.43	Philanthropy
Thomas Chew Memorial Boys Club Inc	1.86	6.22	Youth Development
United Way Of Greater Fall River Inc	1.62	6.87	Philanthropy

Nonprofits with a strong associative component

Associative Nonprofits

Number of Organizations per 1,000 residents

