

2016

Data Profiles - Everett

Mosakowski Institute
Clark University

John C. Brown
Clark University

Joe Krahe
Clark University

Sarah Philbrick
Clark University

Recommended Citation

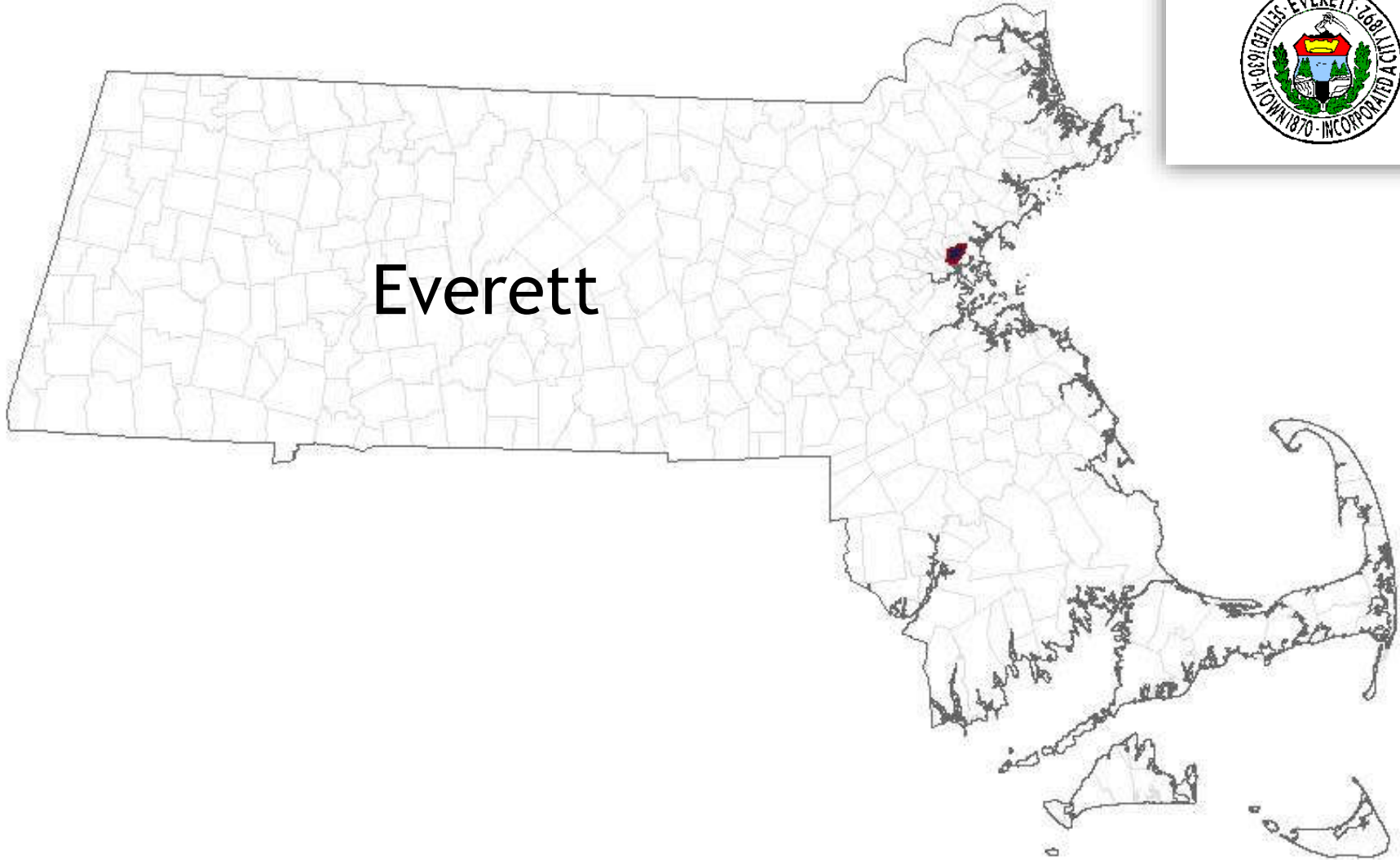
Mosakowski Institute; Brown, John C.; Krahe, Joe; and Philbrick, Sarah, "Data Profiles - Everett" (2016). *Mosakowski Institute for Public Enterprise*. 59.
<https://commons.clarku.edu/mosakowskiinstitute/59>

This Article is brought to you for free and open access by the Academic Departments, Centers & Programs at Clark Digital Commons. It has been accepted for inclusion in Mosakowski Institute for Public Enterprise by an authorized administrator of Clark Digital Commons. For more information, please contact mkrikonis@clarku.edu, jodolan@clarku.edu.

Data Profiles - Everett

Keywords

data profiles, everett, gateway cities, working cities

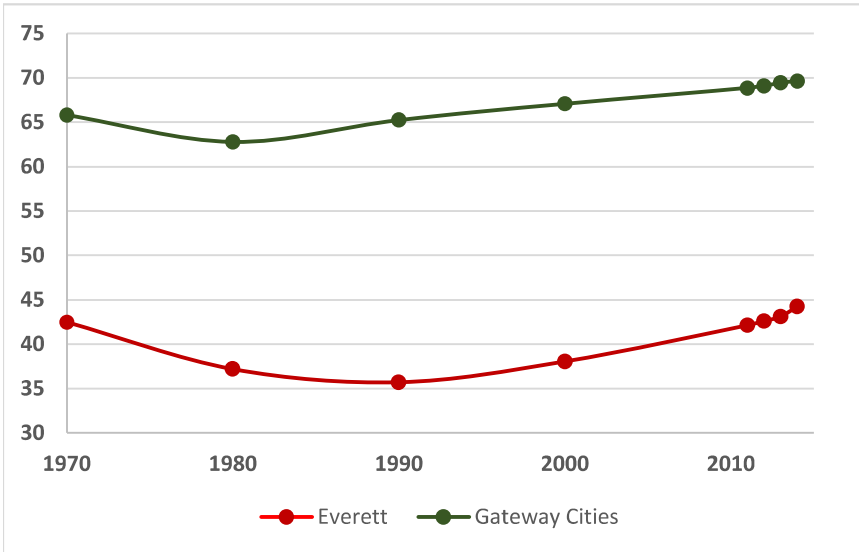


Everett

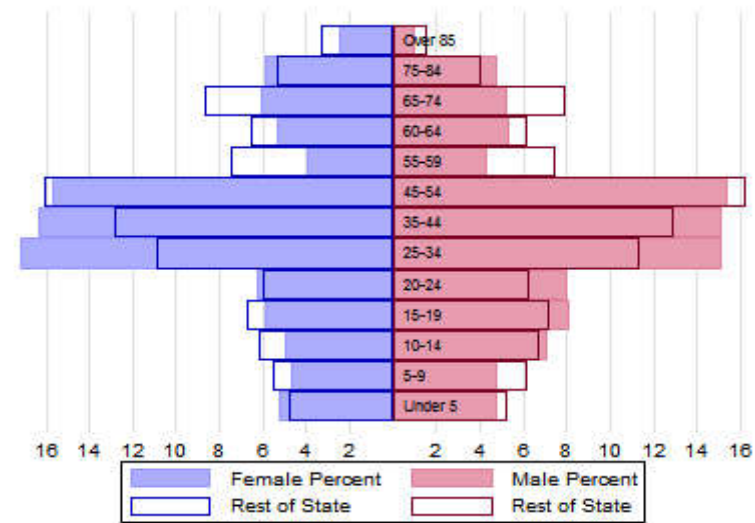


The Population

City Population 1970 to 2014



Population Distribution by Age Group



Population Distribution by Race and Ethnicity

Subgroups of the population as a percent of the total	2000	2013	Gateway Cities 2013	State 2013
White	79.7	68.7	73.8	89.0
Black	6.3	14.7	8.0	2.8
Asian	3.2	3.5	5.3	4.8
Foreign-born	21.9	41.2	19.9	12.1
Hispanic	9.5	21.1	19.6	4.3
Origin as percent of Hispanic				
Central America	33.2	53.2	15.8	20.3
Dominican Republic	2.2	5.3	14.4	17.9
Mexico	5.1	4.0	5.5	11.4
Puerto Rico	15.0	14.1	45.5	33.6

Recent Demographic Behavior

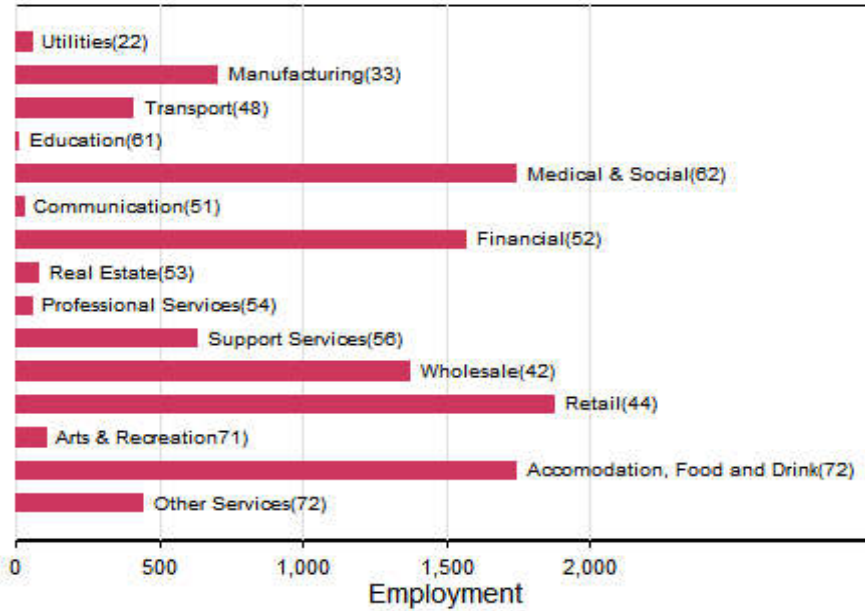
Indicator	Everett	Gateway Cities	State
Birth Rate (per 1,000 females 15-44)	64.7	62.1	52.8
Low birthweight (<2.5 kg. % of births)	8.8	8.0	7.7
Births to teen mothers (15-19 years)†	3.9	6.0	3.8
Birth rate of teen mothers‡	NA	22.3	12.0
Infant mortality (per 1,000 live births)	1.6	4.9	4.4
Mortality rate (per 100,000 residents)	727	844.9	800.0

†As percent of all births

‡Per 1,000 females aged 15-19 years

The Local Economy

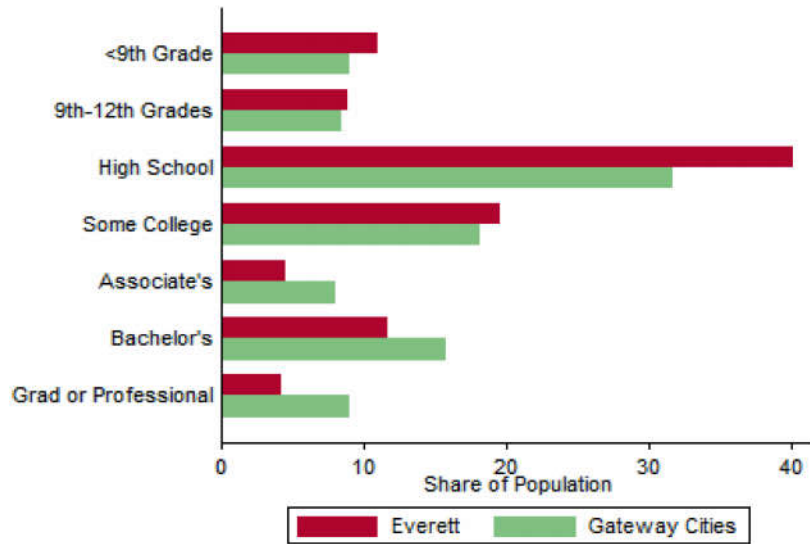
Employment by Major Sectors: 2012 (2-digit NAICS)



The Five Largest Industries: 2012 (4-digit NAICS industries)

Description	NAICS	Employment
Depository Credit Intermediation	5221	1000-2499
Grocery Wholesalers	4244	500-999
Restaurants	7225	500-999
General Hospitals	6221	500-999
Grocery Stores	4451	250-499

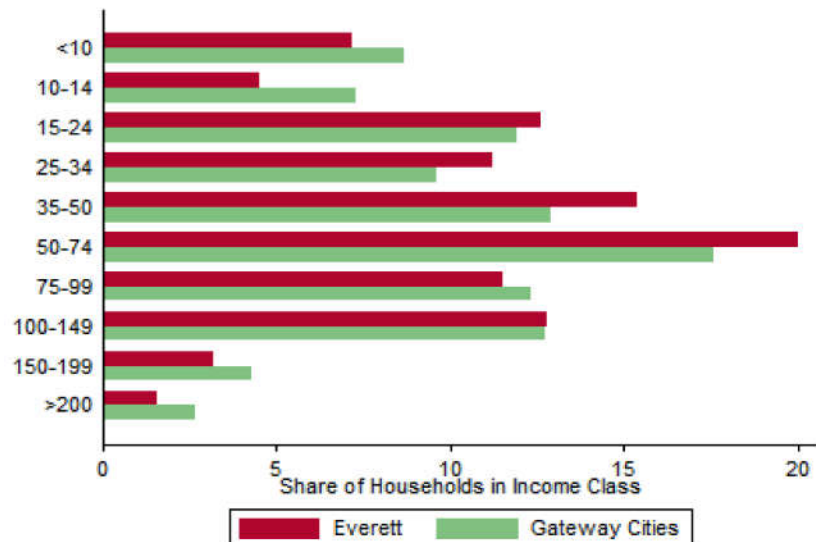
Educational Attainment of the Population Aged 25 and Older



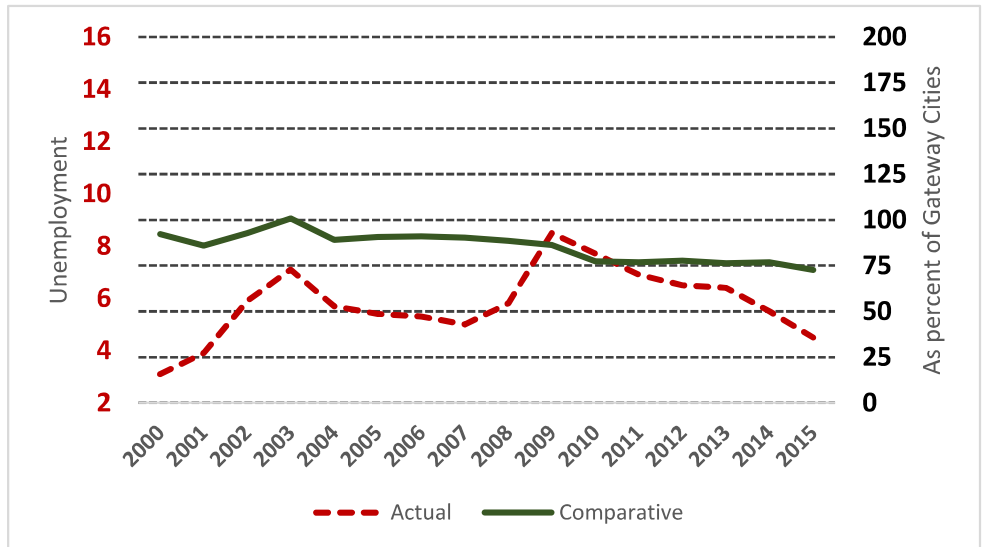
Key Indicators of Income and Commuting

Indicator	Everett	Gateway Cities
Median Family Income (\$)	49,038	60,087
Families below Poverty Line (%)	11.7	14.3
Children < 18 below Poverty Line (%)	14.7	25.5
Families with Food Assistance (%)	17.4	20.8
Mean Travel Time to Work (Mins.)	31.3	26.4
Commute with Public Transit (%)	23.3	8.6

Distribution of Households by Income Class (in \$1,000)



Unemployment Rate: 2000-2015



Housing

Housing Market Indicators in 2013

Indicator	Everett	Gateway Cities	State
Share owner-occupied	0.40	0.50	0.62
Median Home Value	306,400	252,085	325,800
Average Rent for Studio	534	735	746
Average Rent for One-Bedroom	580	786	765
Average Rent for Two-Bedroom	871	1097	926
Average Rent for Three-Bedroom	1147	1182	863
Average Size of Owner-Occupied Households	2.48	2.68	2.25
Average Size of Tenant Households	2.95	2.38	2.70

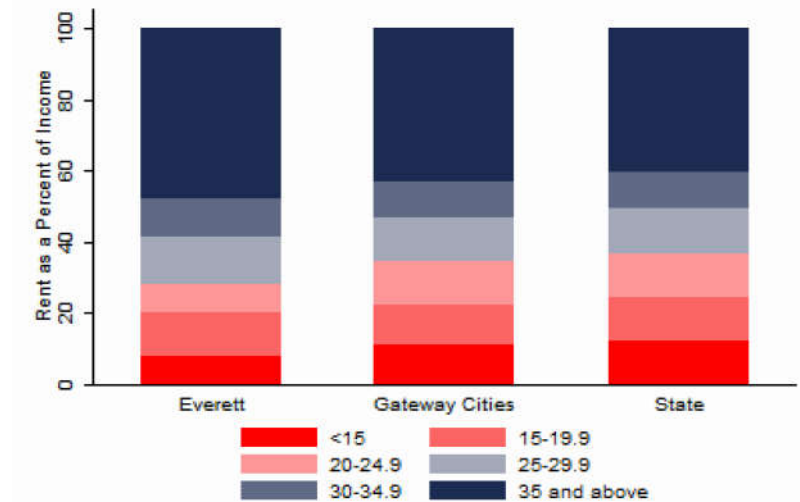
Education

Indicators for 2014

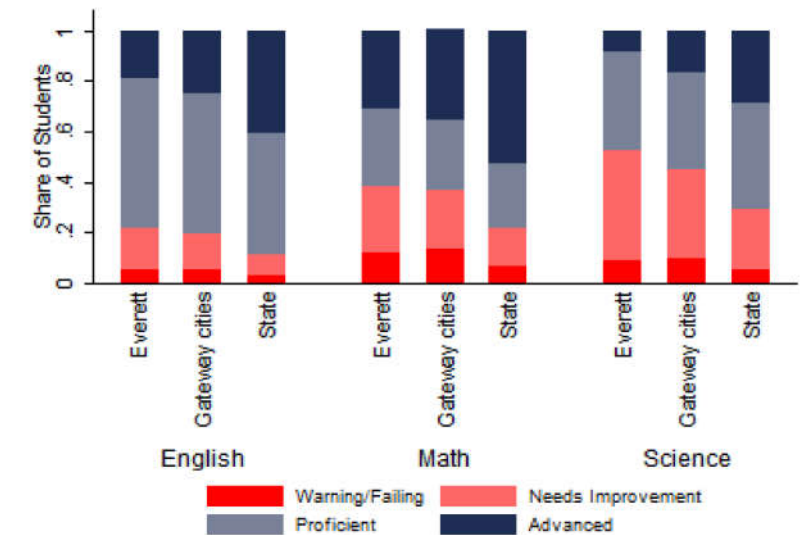
Indicator	Everett	Gateway Cities	State
Average class size	20.2	18.3	18.1
Percent Proficient or Advanced (English 10th)	78.0	80.3	90.0
Percent Proficient or Advanced (Math 10th)	62.0	63.4	79.0
Student Growth Percentile English (10th)	48.0	43.7	51.0
Student Growth Percentile Math (10th)	58.0	43.4	50.0
Graduates attending college or university†	70.3	69.7	76.6
Male Dropout Rate	9.7	11.8	6.7
Female Dropout Rate	7.8	7.9	4.4
English Language Learners Dropout Rate	19.8	16.8	14.9
Low Income Dropout Rate	8.1	11.8	10.2

†Percent of 2013 class

Housing Affordability



10th Grade MCAS Scores in 2014



Mortality and Health

	Everett	Gateway Cities	State
Lung Cancer Deaths (per 100,000 people) †	81.6	61.3	54.1
Cardiovascular Disease Deaths (per 100,000) †	196.7	254.7	237.4
Opioid Overdose Deaths (per 100,000)‡	52.0	25.5	13.0
HIV/Aids Prevalence Rate (per 100,000 people) 2010†	398.9	317.0	282.3
Admissions to DPH Substance Abuse Programs (per 100,000 people) ‡	2077	2189	1568
Hospital Discharges for Asthma (per 100,000) 2009	189.5	208.8	162.0
Percent overweight or obese children in grade 10 ‡	36.6	38.2	32.3
Percent of population on some form of non-private insurance 2013	42.5	36.1	17.2

†2010

‡2014

Civic Engagement

Voting Behavior in 2014

Indicator	Everett	Gateway Cities	State
Registered voters as percent of population aged 18 and above	58.0	75.1	76.0
Voters in 2014 election as percent of registered voters	47.7	43.5	72.7
Voters in 2014 election as percent of population aged 18 and above	27.7	32.8	55.2

Not-for-Profit Sector

Indicator (in \$ per capita)	Everett	Gateway Cities	State
Assets of Education, Finance, and Medical Non-Profits	1,049	10,152	27,527
Assets of Other Non-Profits	2,315	5,530	18,501
Revenue of Education, Finance, and Medical Non-Profits	49	4,361	10,472
Revenue of Other Non-Profits	306	3,050	10,589

Major Nonprofits in Education, Finance and Health Services (in \$millions)

Name	Revenues	Assets	Area
Everett Credit Union	1.82	44.58	Financial
Joint Committee for Childrens Health Care In Everett	0.16	0.05	Healthcare
Alima Usa Inc	0.10	0.00	Healthcare

Other Nonprofits (in \$millions)

Name	Revenues	Assets	Area
Community Family Inc	3.61	7.03	Human Services
Massachusetts Teachers Association	0.48	0.04	Education
Sikh Sangat Society Boston	0.30	1.73	Religion-Related
La Comunidad Inc	0.29	0.69	Housing
American Muslim Center	0.18	0.53	Religion-Related
Everett Revere Youth Hockey Inc	0.15	0.00	Sports
Pop Warner Little Scholars Inc	0.12	0.02	Education
International Union of Painters And Allied Trades	0.10	0.03	Community Improvement
Tian Yue Academy Of The Arts	0.08	0.04	Arts & Culture
Everett Chamber of Commerce Inc	0.08	0.22	Community Improvement
A Better Tomorrow Services Inc	0.07	0.00	Human Services
Little League Baseball Inc	0.06	0.02	Sports
Fa-Eai Inc	0.05	0.03	Food & Agriculture
Kiwanis International Inc	0.04	0.07	Community Improvement
Edward A Bond Foundation	0.04	0.83	Philanthropy

Nonprofits with a strong associative component

Associative Nonprofits

Number of Organizations per 1,000 residents

