

2016

## Data Profiles - Chicopee

Mosakowski Institute  
*Clark University*

John C. Brown  
*Clark University*

Joe Krahe  
*Clark University*

Sarah Philbrick  
*Clark University*

---

### Recommended Citation

Mosakowski Institute; Brown, John C.; Krahe, Joe; and Philbrick, Sarah, "Data Profiles - Chicopee" (2016). *Mosakowski Institute for Public Enterprise*. 60.  
<https://commons.clarku.edu/mosakowskiinstitute/60>

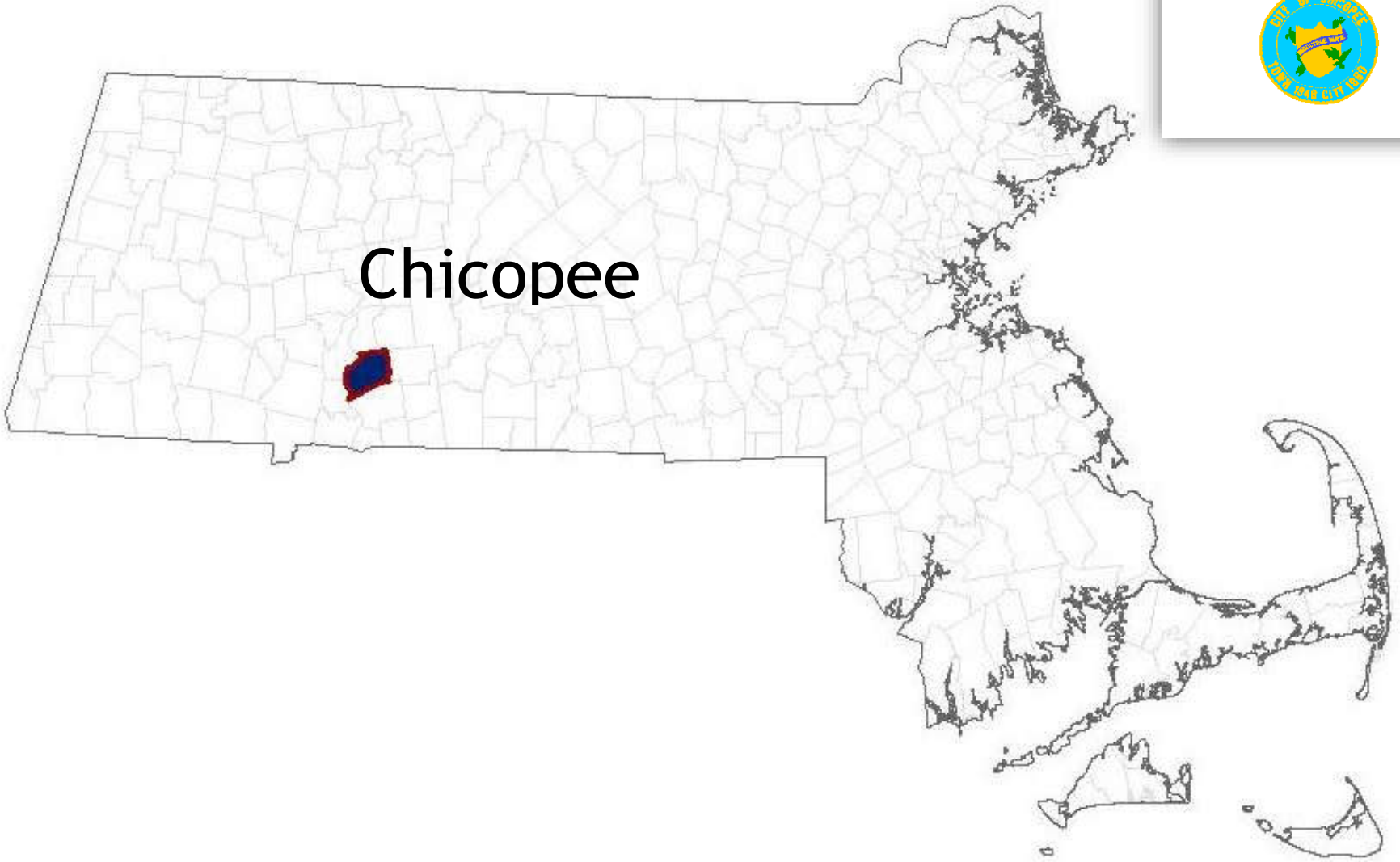
This Article is brought to you for free and open access by the Academic Departments, Centers & Programs at Clark Digital Commons. It has been accepted for inclusion in Mosakowski Institute for Public Enterprise by an authorized administrator of Clark Digital Commons. For more information, please contact [mkrikonis@clarku.edu](mailto:mkrikonis@clarku.edu), [jodolan@clarku.edu](mailto:jodolan@clarku.edu).

---

## Data Profiles - Chicopee

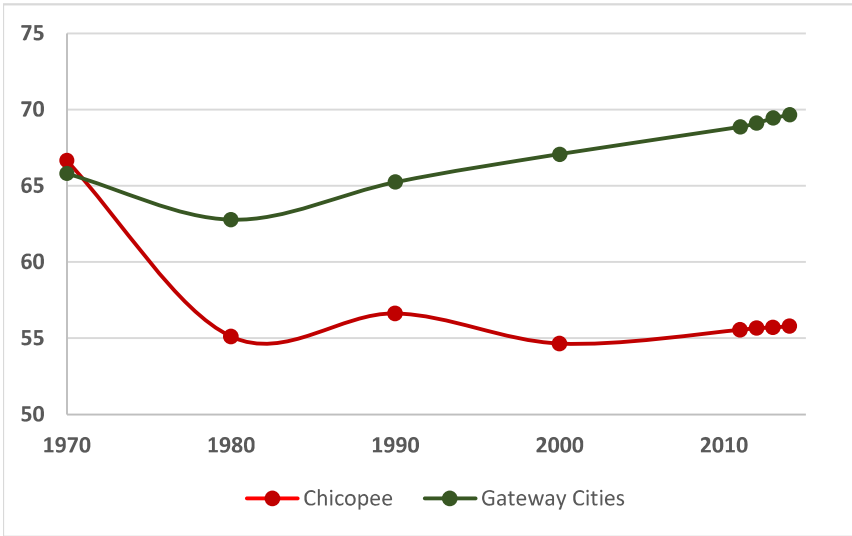
**Keywords**

data profiles, chicopee, gateway cities, working cities

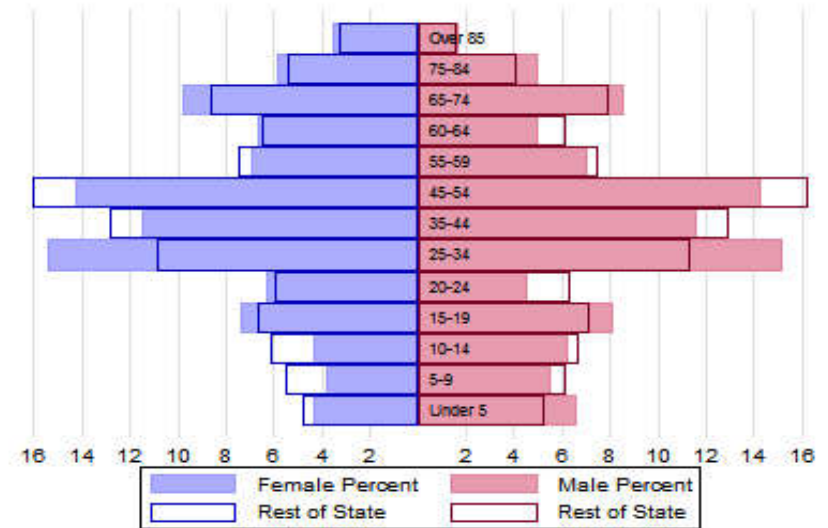


# The Population

## City Population 1970 to 2014



## Population Distribution by Age Group



## Population Distribution by Race and Ethnicity

Subgroups of the population as a percent of the total	2000	2013	Gateway Cities 2013	State 2013
White	89.8	85.8	73.8	89.0
Black	2.3	3.5	8.0	2.8
Asian	0.9	1.5	5.3	4.8
Foreign-born	8.2	9.3	19.9	12.1
Hispanic	8.8	14.8	19.6	4.3
<b>Origin as percent of Hispanic</b>				
Central America	0.5	0.9	15.8	20.3
Dominican Republic	2.0	3.2	14.4	17.9
Mexico	1.9	2.5	5.5	11.4
Puerto Rico	82.1	86.6	45.5	33.6

## Recent Demographic Behavior

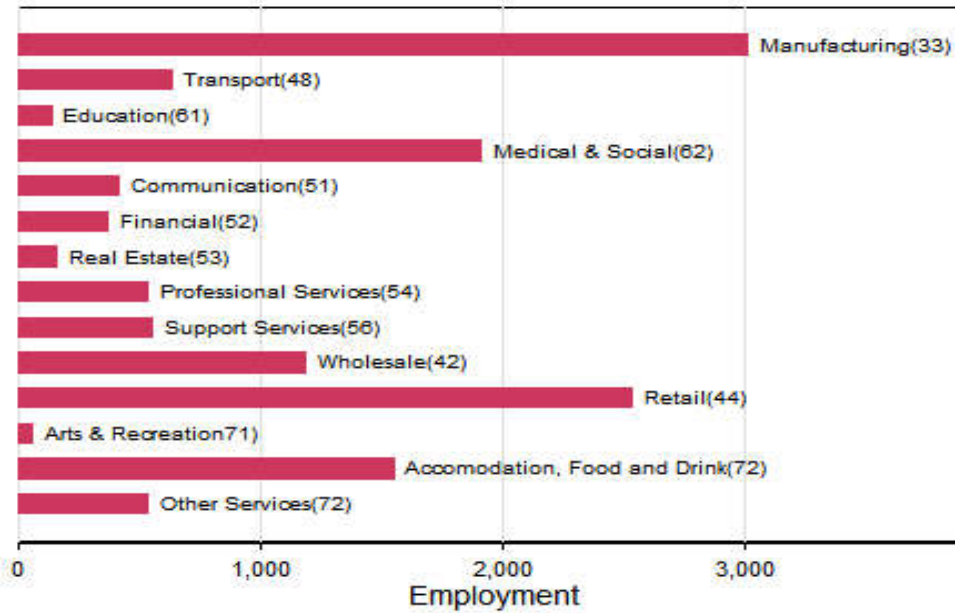
Indicator	Chicopee	Gateway Cities	State
Birth Rate (per 1,000 females 15-44)	54.7	62.1	52.8
Low birthweight (<2.5 kg. % of births)	7.5	8.0	7.7
Births to teen mothers (15-19 years)†	7.0	6.0	3.8
Birth rate of teen mothers‡	23.4	22.3	12.0
Infant mortality (per 1,000 live births)	1.6	4.9	4.4
Mortality rate (per 100,000 residents)	1035	844.9	800.0

†As percent of all births

‡Per 1,000 females aged 15-19 years

# The Local Economy

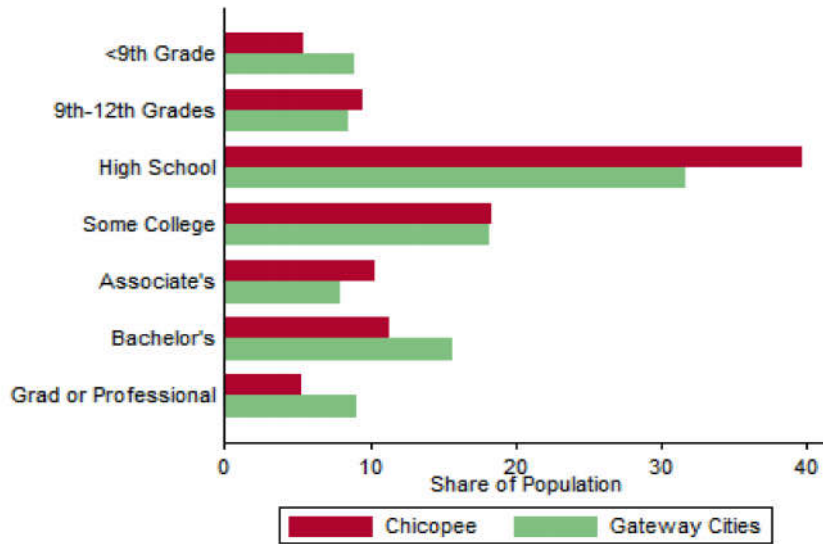
## Employment by Major Sectors: 2012 (2-digit NAICS)



## The Five Largest Industries: 2012 (4-digit NAICS industries)

Description	NAICS	Employment
Restaurants	7225	1000-2499
Grocery Stores	4451	500-999
General Merchandise Stores	4529	500-999
Printing	3231	250-499
Wholesalers Of Misc. Non-Durables	4249	250-499

### Educational Attainment of the Population Aged 25 and Older



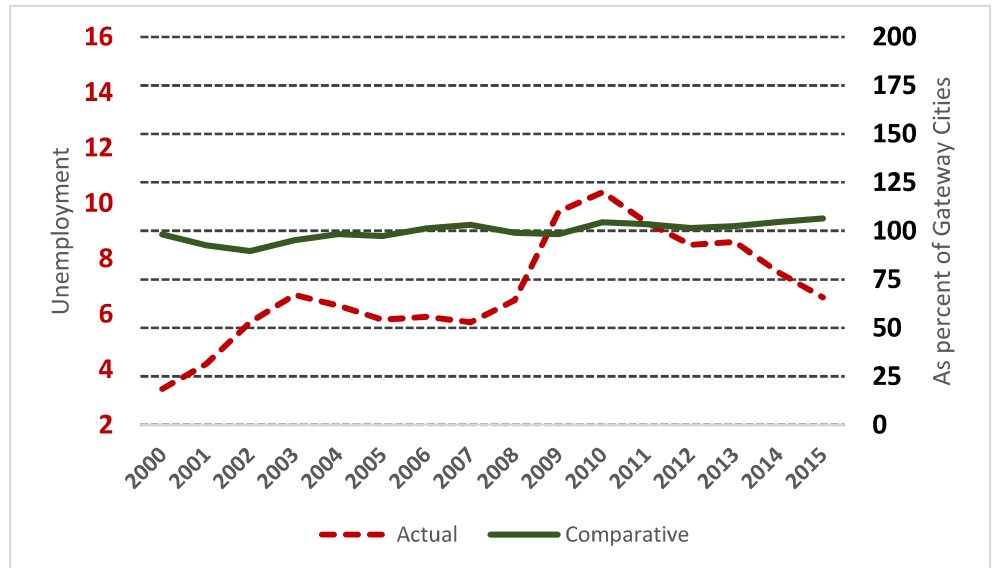
### Key Indicators of Income and Commuting

Indicator	Chicopee	Gateway Cities
Median Family Income (\$)	47,182	60,087
Families below Poverty Line (%)	10.4	14.3
Children < 18 below Poverty Line (%)	20.4	25.5
Families with Food Assistance (%)	18.7	20.8
Mean Travel Time to Work (Mins.)	20.8	26.4
Commute with Public Transit (%)	2.1	8.6

### Distribution of Households by Income Class (in \$1,000)



### Unemployment Rate: 2000-2015



# Housing

## Housing Market Indicators in 2013

Indicator	Chicopee	Gateway Cities	State
Share owner-occupied	0.58	0.50	0.62
Median Home Value	172,700	252,085	325,800
Average Rent for Studio	802	735	746
Average Rent for One-Bedroom	857	786	765
Average Rent for Two-Bedroom	1199	1097	926
Average Rent for Three-Bedroom	1378	1182	863
Average Size of Owner-Occupied Households	2.25	2.68	2.25
Average Size of Tenant Households	2.49	2.38	2.70

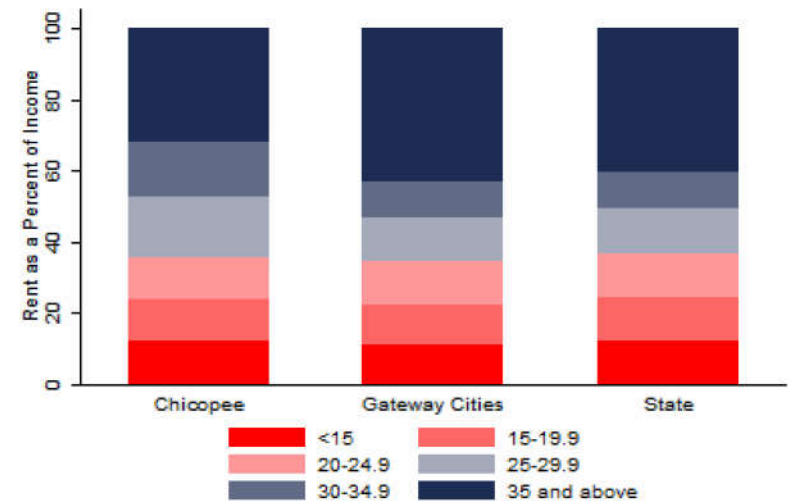
# Education

## Indicators for 2014

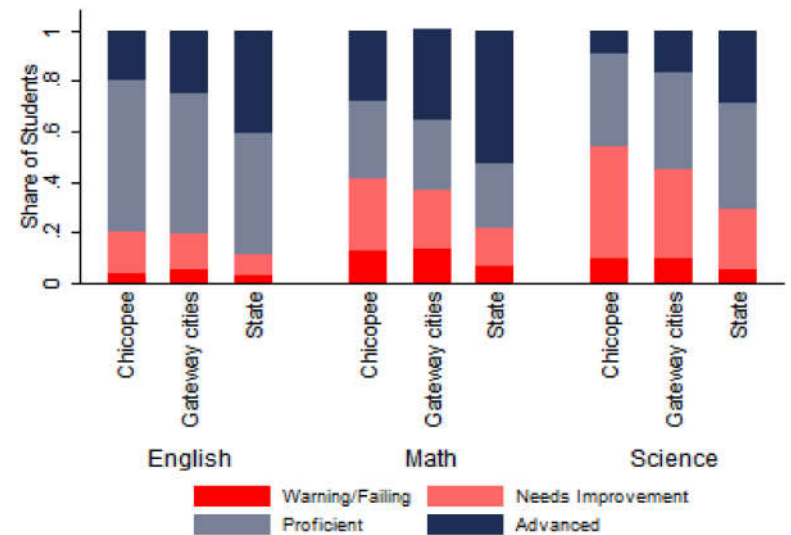
Indicator	Chicopee	Gateway Cities	State
Average class size	17.3	18.3	18.1
Percent Proficient or Advanced (English 10th)	80.0	80.3	90.0
Percent Proficient or Advanced (Math 10th)	59.0	63.4	79.0
Student Growth Percentile English (10th)	28.0	43.7	51.0
Student Growth Percentile Math (10th)	30.0	43.4	50.0
Graduates attending college or university†	69.6	69.7	76.6
Male Dropout Rate	15.4	11.8	6.7
Female Dropout Rate	7.3	7.9	4.4
English Language Learners Dropout Rate	22.2	16.8	14.9
Low Income Dropout Rate	14.6	11.8	10.2

†Percent of 2013 class

## Housing Affordability



## 10th Grade MCAS Scores in 2014



## Mortality and Health

	Chicopee	Gateway Cities	State
Lung Cancer Deaths (per 100,000 people) †	83.2	61.3	54.1
Cardiovascular Disease Deaths (per 100,000) †	303.8	254.7	237.4
Opioid Overdose Deaths (per 100,000)‡	10.8	25.5	13.0
HIV/Aids Prevalence Rate (per 100,000 people) 2010†	230.8	317.0	282.3
Admissions to DPH Substance Abuse Programs (per 100,000 people) ‡	2075	2189	1568
Hospital Discharges for Asthma (per 100,000) 2009	222.5	208.8	162.0
Percent overweight or obese children in grade 10 ‡	41.5	38.2	32.3
Percent of population on some form of non-private insurance 2013	33.4	36.1	17.2

†2010

‡2014



## Civic Engagement

### Voting Behavior in 2014

Indicator	Chicopee	Gateway Cities	State
Registered voters as percent of population aged 18 and above	79.5	75.1	76.0
Voters in 2014 election as percent of registered voters	45.2	43.5	72.7
Voters in 2014 election as percent of population aged 18 and above	35.9	32.8	55.2

### Not-for-Profit Sector

Indicator (in \$ per capita)	Chicopee	Gateway Cities	State
Assets of Education, Finance, and Medical Non-Profits	11,634	10,152	27,527
Assets of Other Non-Profits	1,663	5,530	18,501
Revenue of Education, Finance, and Medical Non-Profits	807	4,361	10,472
Revenue of Other Non-Profits	1,088	3,050	10,589

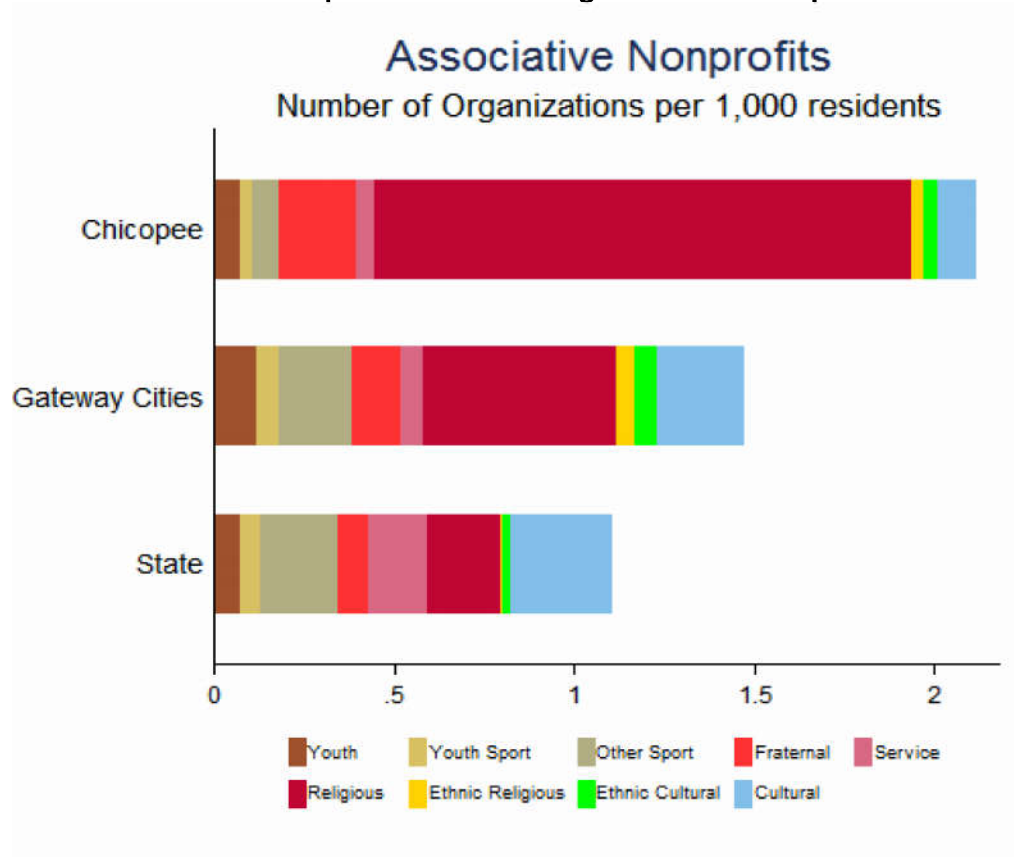
### Major Nonprofits in Education, Finance and Health Services (in \$millions)

Name	Revenues	Assets	Area
College of Our Lady of The Elms	39.01	41.63	Education
Polish National Credit Union	13.61	484.48	Financial
Alden Credit Union	5.93	120.54	Financial

**Other Nonprofits (in \$millions)**

Name	Revenues	Assets	Area
Valley Opportunity Council Inc	32.50	11.82	Community Improvement
Sunshine Village Inc	10.68	5.33	Human Services
Westover Metropolitan Development Corp	4.25	17.24	Community Improvement
United Association of Journeymen & Apprentices of The Plumbing & Pipe	1.02	1.02	Employment
Microtek Inc	0.96	4.53	Employment
Boys & Girls Club of Chicopee Inc	0.76	1.86	Youth Development
Massachusetts Teachers Association	0.65	0.28	Employment
Westmass Area Development Corp	0.55	11.19	Community Improvement
Chicopee Falls Lodge No 1849 Loyal Order of Moose	0.55	1.15	Membership Benefit
Chicopee Child Development Center Inc	0.48	0.54	Education
United Service Organizations	0.45	0.14	Public Benefit
Plumbers & Pipefitters Union Local 104 Joint Apprentice Trust Fund	0.33	0.66	Education
Lorraines Soup Kitchen & Pantry Inc	0.27	0.44	Human Services
Greater Chicopee Chamber Of Commerce	0.24	0.16	Community Improvement
National Association of Power Engineers Inc	0.24	0.21	Public Benefit

Nonprofits with a strong associative component



Chicopee