

2016

Data Profiles - Brockton

Mosakowski Institute
Clark University

John C. Brown
Clark University

Joe Krahe
Clark University

Sarah Philbrick
Clark University

Recommended Citation

Mosakowski Institute; Brown, John C.; Krahe, Joe; and Philbrick, Sarah, "Data Profiles - Brockton" (2016). *Mosakowski Institute for Public Enterprise*. 62.

<https://commons.clarku.edu/mosakowskiinstitute/62>

This Article is brought to you for free and open access by the Academic Departments, Centers & Programs at Clark Digital Commons. It has been accepted for inclusion in Mosakowski Institute for Public Enterprise by an authorized administrator of Clark Digital Commons. For more information, please contact mkrikonis@clarku.edu, jodolan@clarku.edu.

Data Profiles - Brockton

Keywords

data profiles, brockton, gateway cities, working cities

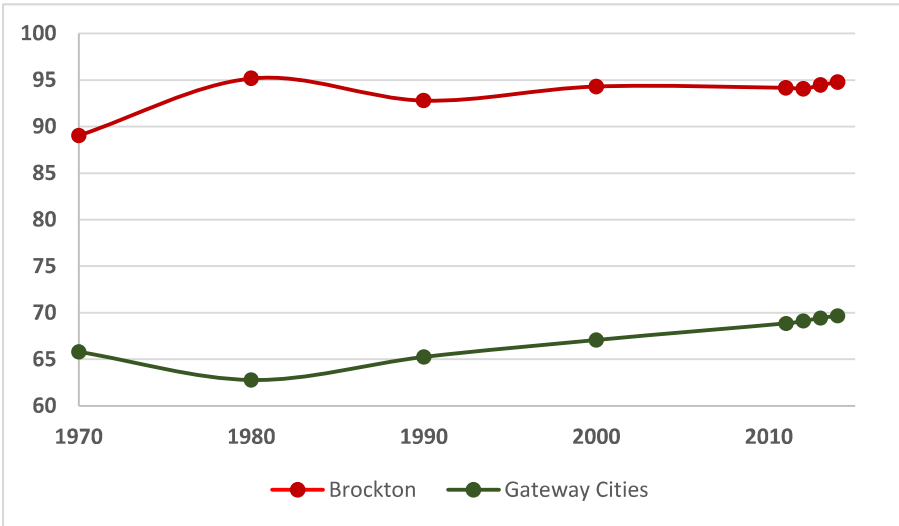


Brockton

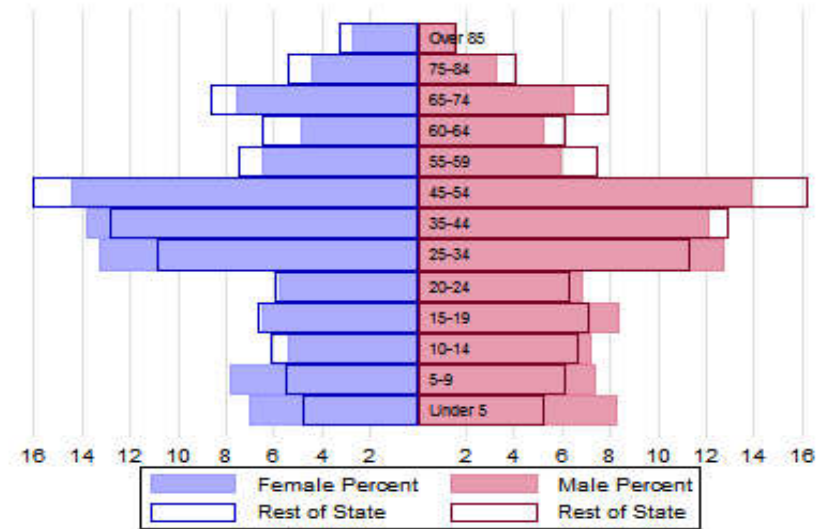


The Population

City Population 1970 to 2014



Population Distribution by Age Group



Population Distribution by Race and Ethnicity

Subgroups of the population as a percent of the total	2000	2013	Gateway Cities 2013	State 2013
White	61.5	48.3	73.8	89.0
Black	17.8	38.3	8.0	2.8
Asian	2.2	2.1	5.3	4.8
Foreign-born	18.4	24.7	19.9	12.1
Hispanic	8.0	10.0	19.6	4.3
Origin as percent of Hispanic				
Central America	6.4	11.7	15.8	20.3
Dominican Republic	5.3	8.9	14.4	17.9
Mexico	5.3	5.0	5.5	11.4
Puerto Rico	60.2	55.1	45.5	33.6

Recent Demographic Behavior

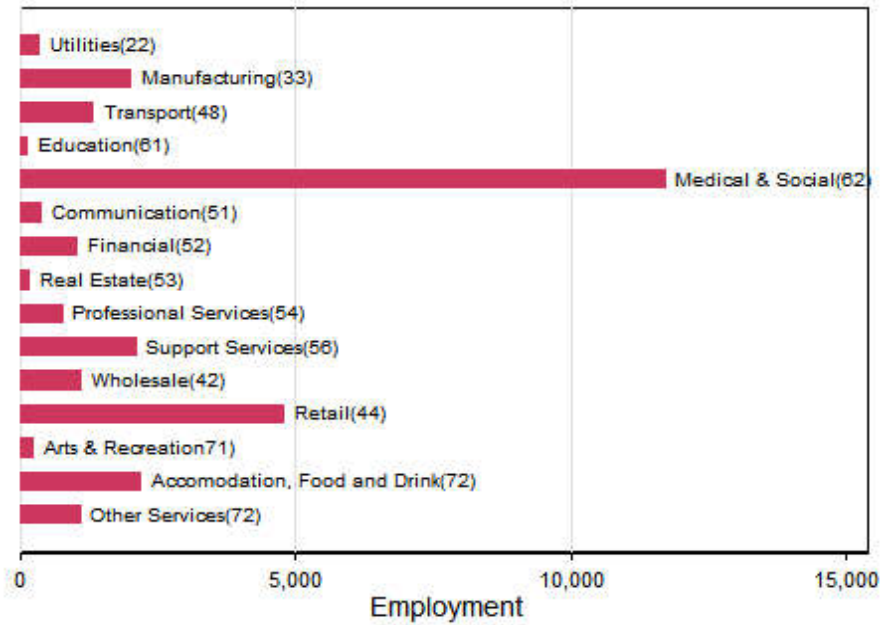
Indicator	Brockton	Gateway Cities	State
Birth Rate (per 1,000 females 15-44)	77.6	62.1	52.8
Low birthweight (<2.5 kg. % of births)	8.5	8.0	7.7
Births to teen mothers (15-19 years)†	6.4	6.0	3.8
Birth rate of teen mothers‡	28.6	22.3	12.0
Infant mortality (per 1,000 live births)	7.1	4.9	4.4
Mortality rate (per 100,000 residents)	789.9	844.9	800.0

†As percent of all births

‡Per 1,000 females aged 15-19 years

The Local Economy

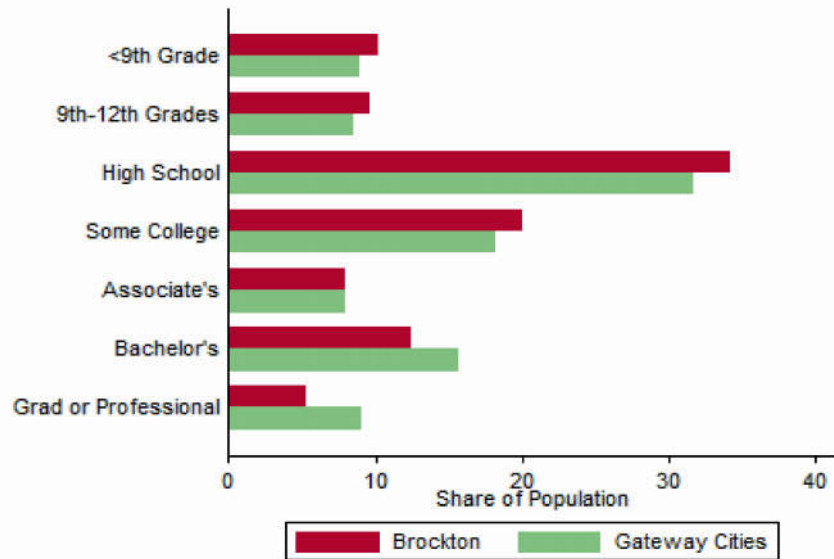
Employment by Major Sectors: 2012 (2-digit NAICS)



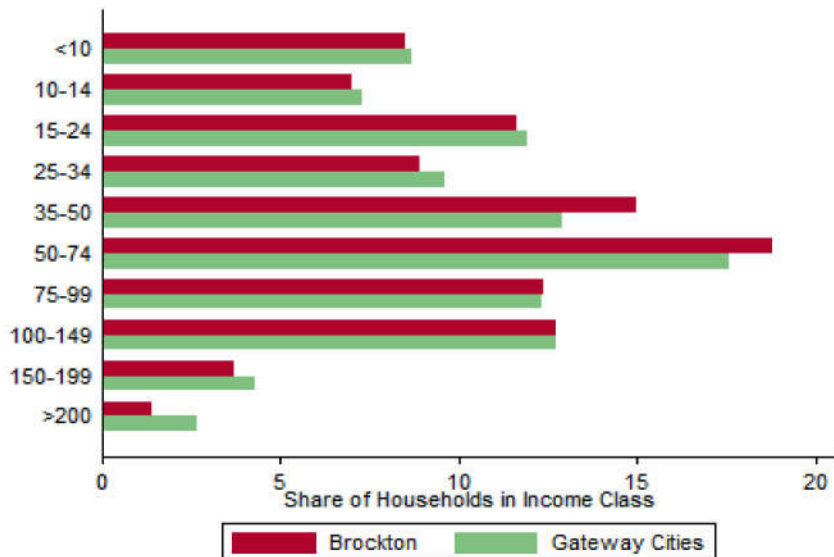
The Five Largest Industries: 2012 (4-digit NAICS industries)

Description	NAICS	Employment
General Hospitals	6221	2500-4999
Restaurants	7225	1000-2499
Physicians Offices	6211	1000-2499
Employment Services	5613	1000-2499
Skilled Nursing Facilities	6231	1000-2499

Educational Attainment of the Population Aged 25 and Older



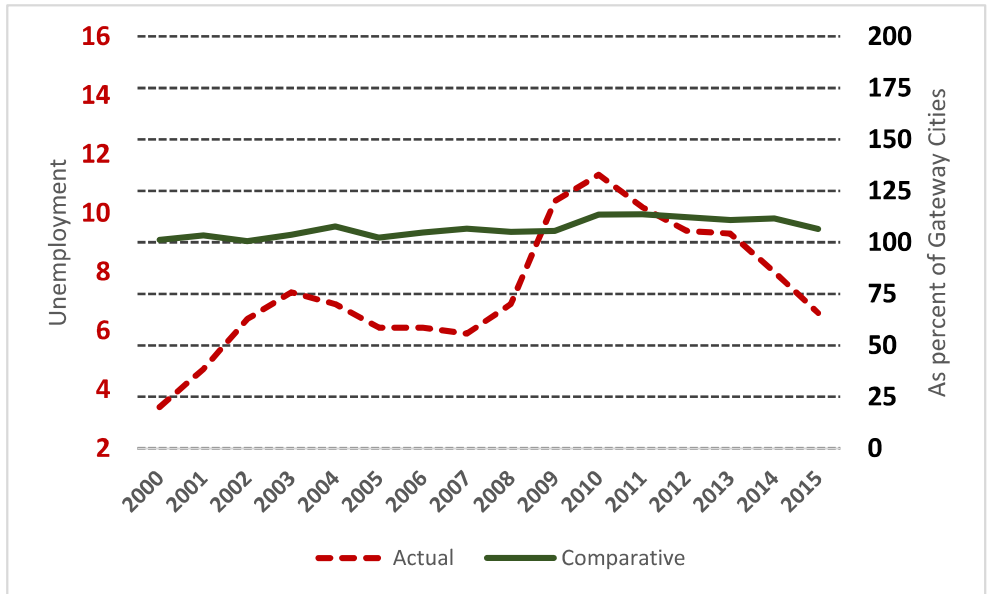
Distribution of Households by Income Class (in \$1,000)



Key Indicators of Income and Commuting

Indicator	Brockton	Gateway Cities
Median Family Income (\$)	49,032	60,087
Families below Poverty Line (%)	15.3	14.3
Children < 18 below Poverty Line (%)	27.1	25.5
Families with Food Assistance (%)	23.7	20.8
Mean Travel Time to Work (Mins.)	29.8	26.4
Commute with Public Transit (%)	6.2	8.6

Unemployment Rate: 2000-2015



Housing

Housing Market Indicators in 2013

Indicator	Brockton	Gateway Cities	State
Share owner-occupied	0.57	0.50	0.62
Median Home Value	223,000	252,085	325,800
Average Rent for Studio	1,027	735	746
Average Rent for One-Bedroom	1,095	786	765
Average Rent for Two-Bedroom	1,202	1097	926
Average Rent for Three-Bedroom	1,186	1182	863
Average Size of Owner-Occupied Households	2.65	2.68	2.25
Average Size of Tenant Households	2.98	2.38	2.70

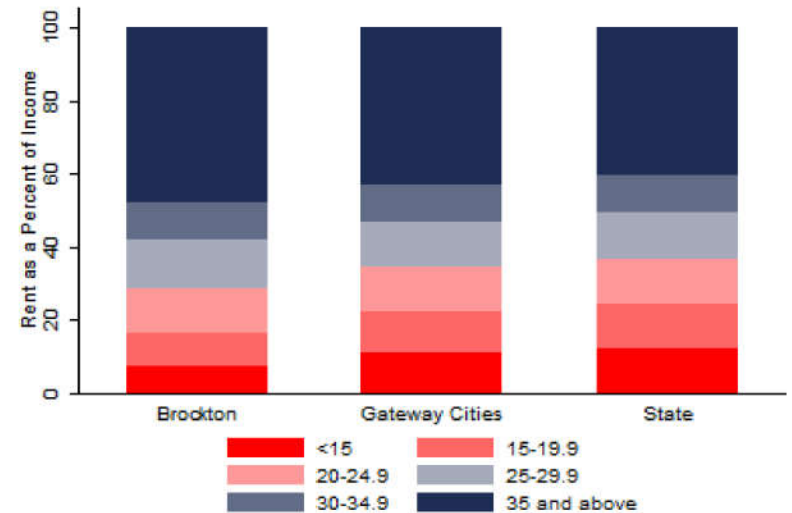
Education

Indicators for 2014

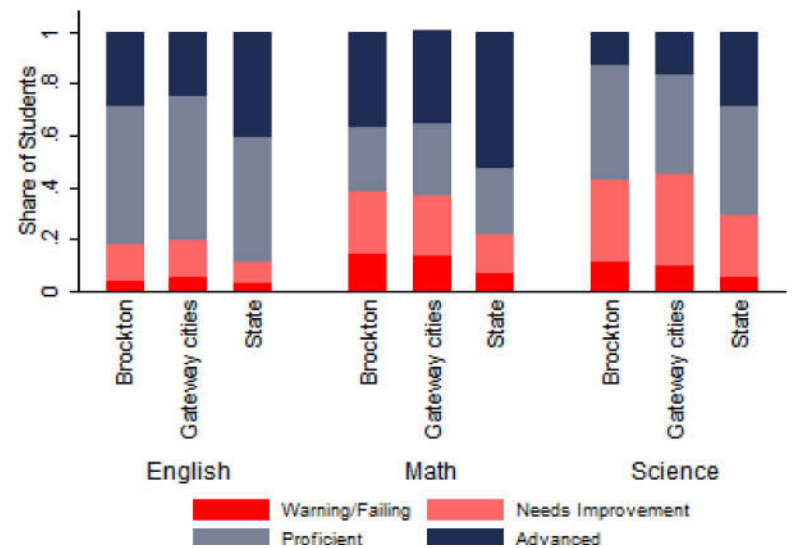
Indicator	Brockton	Gateway Cities	State
Average class size	18.9	18.3	18.1
Percent Proficient or Advanced (English 10th)	82.0	80.3	90.0
Percent Proficient or Advanced (Math 10th)	62.0	63.4	79.0
Student Growth Percentile English (10th)	63.0	43.7	51.0
Student Growth Percentile Math (10th)	64.0	43.4	50.0
Graduates attending college or university†	74.3	69.7	76.6
Male Dropout Rate	14.0	11.8	6.7
Female Dropout Rate	8.1	7.9	4.4
English Language Learners Dropout Rate	16.4	16.8	14.9
Low Income Dropout Rate	10.8	11.8	10.2

†Percent of 2013 class

Housing Affordability



10th Grade MCAS Scores in 2014



Mortality and Health

	Brockton	Gateway Cities	State
Lung Cancer Deaths (per 100,000 people) †	59.4	61.3	54.1
Cardiovascular Disease Deaths (per 100,000) †	238.6	254.7	237.4
Opioid Overdose Deaths (per 100,000)‡	25.3	25.5	13.0
HIV/Aids Prevalence Rate (per 100,000 people) 2010†	393.6	317.0	282.3
Admissions to DPH Substance Abuse Programs (per 100,000 people) ‡	2151	2189	1568
Hospital Discharges for Asthma (per 100,000) 2009	365.8	208.8	162.0
Percent overweight or obese children in grade 10 ‡	42.3	38.2	32.3
Percent of population on some form of non-private insurance 2013	41.9	36.1	17.2

†2010

‡2014

Civic Engagement

Voting Behavior in 2014

Indicator	Brockton	Gateway Cities	State
Registered voters as percent of population aged 18 and above	80.5	75.1	76.0
Voters in 2014 election as percent of registered voters	38.4	43.5	72.7
Voters in 2014 election as percent of population aged 18 and above	31.0	32.8	55.2

Not-for-Profit Sector

Indicator (in \$ per capita)	Brockton	Gateway Cities	State
Assets of Education, Finance, and Medical Non-Profits	7,853	10,152	27,527
Assets of Other Non-Profits	2,128	5,530	18,501
Revenue of Education, Finance, and Medical Non-Profits	3,969	4,361	10,472
Revenue of Other Non-Profits	2,384	3,050	10,589

Major Nonprofits in Education, Finance and Health Services (in \$millions)

Name	Revenues	Assets	Area
Brockton Hospital Inc	224.75	175.53	Healthcare
Signature Healthcare Medical Group Inc	43.36	12.84	Healthcare
Brockton Neighborhood Health Center	37.49	32.84	Healthcare
Crescent Credit Union	17.10	425.62	Financial
Brockton Visiting Nurse Association	14.23	10.66	Healthcare
St Joseph Manor Nursing Home Inc	12.05	7.85	Healthcare
Alliance Health of Brockton Inc	11.22	9.50	Healthcare
Health Imperatives Inc	11.10	2.75	Healthcare
Signature Healthcare Corporation	1.36	60.41	Healthcare

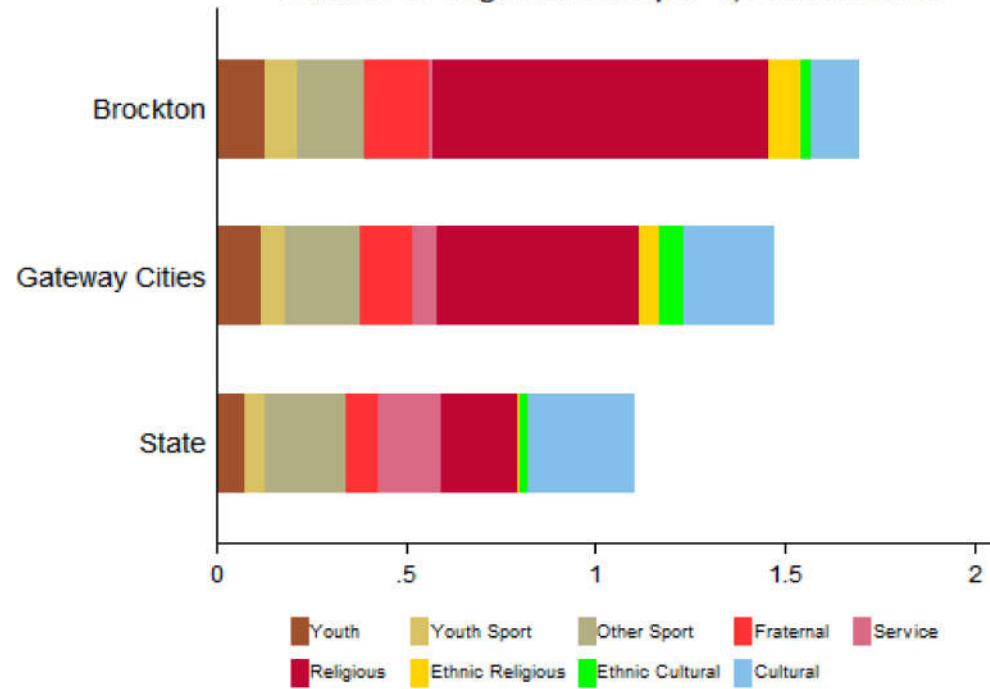
Other Nonprofits (in \$millions)

Name	Revenues	Assets	Area
Brockton Area Multi-Services Inc	68.14	31.30	Human Services
Old Colony YMCA	48.51	48.83	Human Services
Old Colony Elder Services Inc	33.95	13.49	Human Services
Father Bills & Mainspring Inc	15.71	6.85	Housing
Teen Challenge New England Inc	7.59	10.23	Mental Health
Growthways Inc	7.05	6.15	Human Services
Brockton 21st Century Corporation	4.25	17.95	Community Improvement
Brockton Area Workforce Investment Board Inc	3.29	0.77	Employment
Ascentria Care Alliance Inc	2.97	2.78	Human Services
Fuller Arts And Sciences Inc	2.68	2.55	Social Science
Brockton Day Nursery Inc	2.67	2.66	Human Services
South Shore Conference Inc	2.66	0.25	Sports
Brockton Area Association For Retarded Citizens Inc	2.33	2.37	Human Services
Thorny Lea Golf Club Inc	2.29	6.67	Sports
United Way Of Greater Plymouth County Inc	2.01	1.99	Philanthropy

Nonprofits with a strong associative component

Associative Nonprofits

Number of Organizations per 1,000 residents



Brockton