

2016

Data Profiles - Barnstable

Mosakowski Institute
Clark University

John C. Brown
Clark University

Joe Krahe
Clark University

Sarah Philbrick
Clark University

Recommended Citation

Mosakowski Institute; Brown, John C.; Krahe, Joe; and Philbrick, Sarah, "Data Profiles - Barnstable" (2016). *Mosakowski Institute for Public Enterprise*. 63.

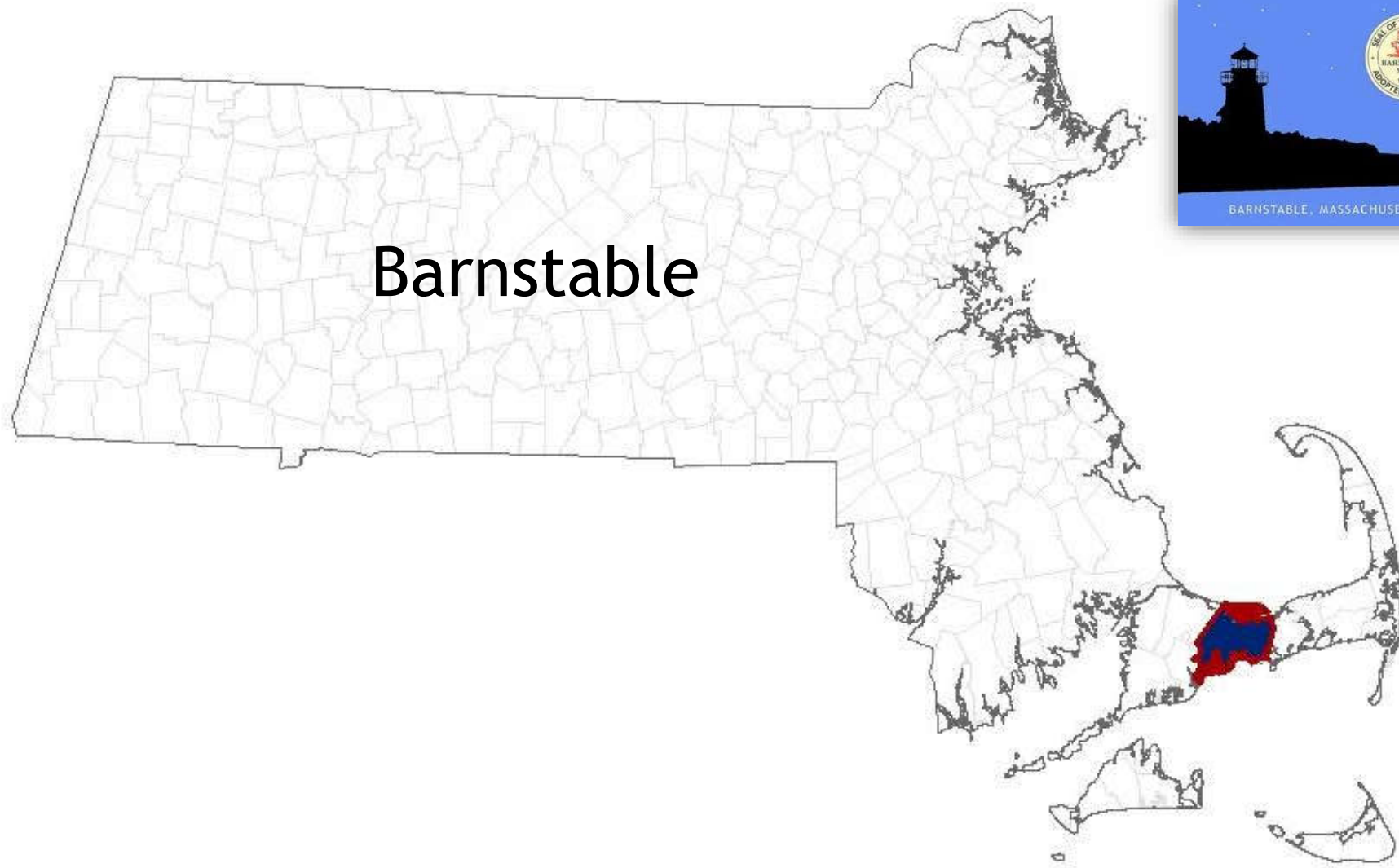
<https://commons.clarku.edu/mosakowskiinstitute/63>

This Article is brought to you for free and open access by the Academic Departments, Centers & Programs at Clark Digital Commons. It has been accepted for inclusion in Mosakowski Institute for Public Enterprise by an authorized administrator of Clark Digital Commons. For more information, please contact mkrikonis@clarku.edu, jodolan@clarku.edu.

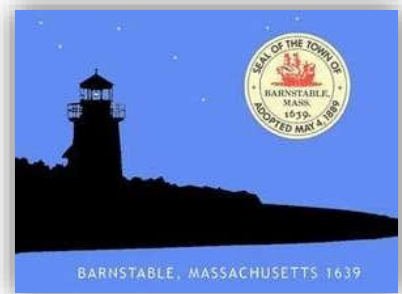
Data Profiles - Barnstable

Keywords

data profiles, barnstable, gateway cities, working cities

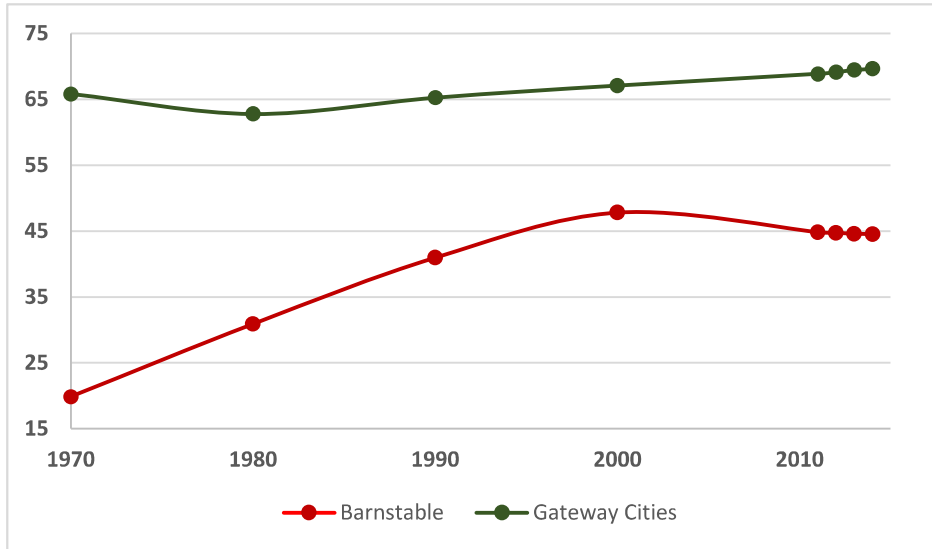


Barnstable

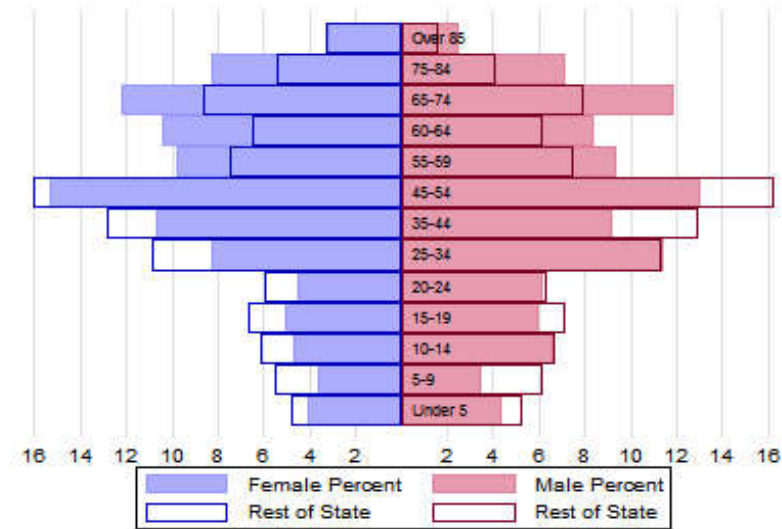


The Population

City Population 1970 to 2014



Population Distribution by Age Group



Population Distribution by Race and Ethnicity

Subgroups of the population as a percent of the total	2000	2013	Gateway Cities 2013	State 2013
White	91.9	91.4	73.8	89.0
Black	2.7	3.2	8.0	2.8
Asian	0.8	0.9	5.3	4.8
Foreign-born	6.9	10.1	19.9	12.1
Hispanic	1.7	3.1	19.6	4.3
Origin as percent of Hispanic				
Central America	6.4	13.1	15.8	20.3
Dominican Republic	5.7	10.6	14.4	17.9
Mexico	12.9	12.2	5.5	11.4
Puerto Rico	31.7	25.9	45.5	33.6

Recent Demographic Behavior

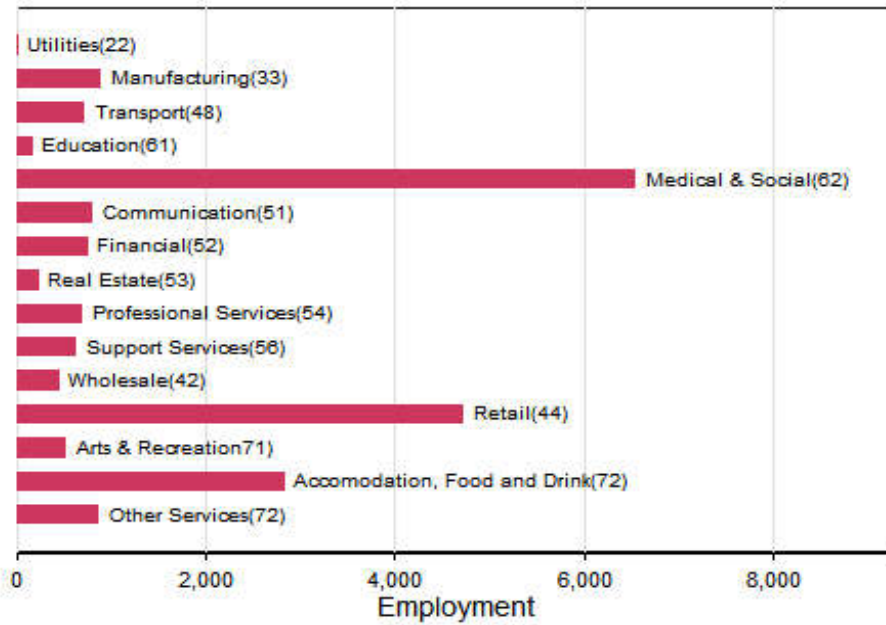
Indicator	Barnstable	Gateway Cities	State
Birth Rate (per 1,000 females 15-44)	60.6	62.1	52.8
Low birthweight (<2.5 kg. % of births)	8.3	8.0	7.7
Births to teen mothers (15-19 years)†	2.8	6.0	3.8
Birth rate of teen mothers‡	8.6	22.3	12.0
Infant mortality (per 1,000 live births)	NA	4.9	4.4
Mortality rate (per 100,000 residents)	1112.0	844.9	800.0

†As percent of all births

‡Per 1,000 females aged 15-19 years

The Local Economy

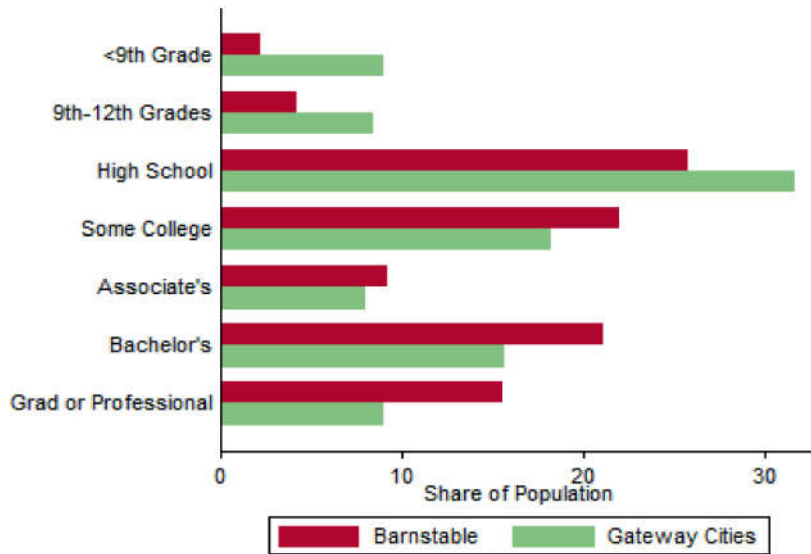
Employment by Major Sectors: 2012 (2-digit NAICS)



The Five Largest Industries: 2012 (4-digit NAICS industries)

Description	NAICS	Employment
Restaurants	7225	1000-2499
General Hospitals	6221	1000-2499
Home Health Care Services	6216	1000-2499
Accommodation	7211	500-999
Grocery Stores	4451	500-999

Educational Attainment of the Population Aged 25 and Older



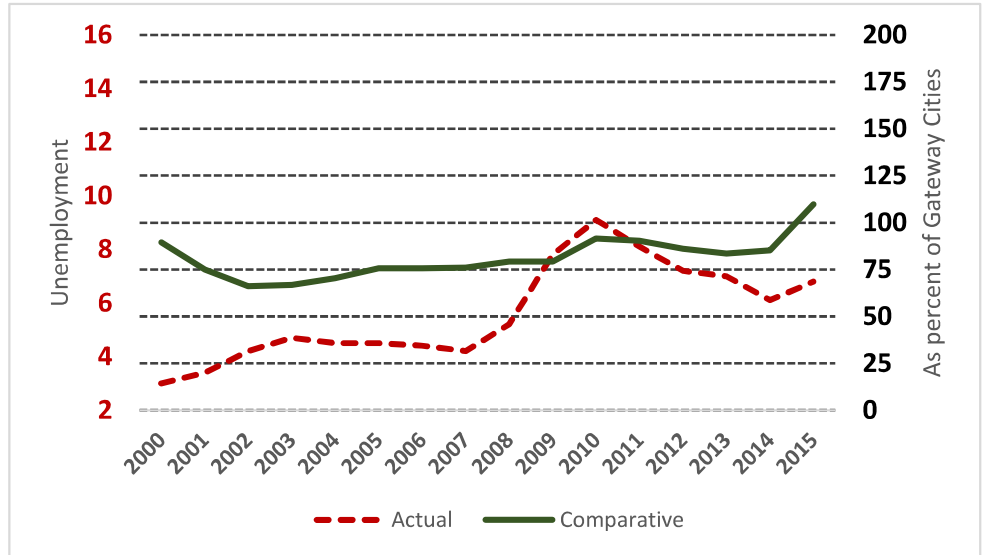
Key Indicators of Income and Commuting

Indicator	Barnstable	Gateway Cities
Median Family Income (\$)	54,087	60,087
Families below Poverty Line (%)	7.7	14.3
Children < 18 below Poverty Line (%)	23.6	25.5
Families with Food Assistance (%)	11.4	20.8
Mean Travel Time to Work (Mins.)	22.0	26.4
Commute with Public Transit (%)	1.0	8.6

Distribution of Households by Income Class (in \$1,000)



Unemployment Rate: 2000-2015



Housing

Housing Market Indicators in 2013

Indicator	Barnstable	Gateway Cities	State
Share owner-occupied	0.74	0.50	0.62
Median Home Value	345,200	252,085	325,800
Average Rent for Studio	763	735	746
Average Rent for One-Bedroom	672	786	765
Average Rent for Two-Bedroom	1261	1097	926
Average Rent for Three-Bedroom	1331	1182	863
Average Size of Owner-Occupied Households	2.28	2.68	2.25
Average Size of Tenant Households	2.22	2.38	2.70

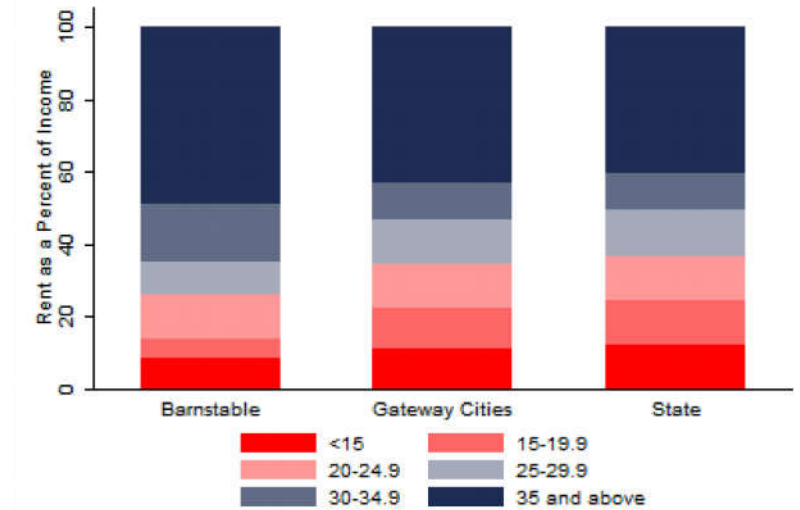
Education

Indicators for 2014

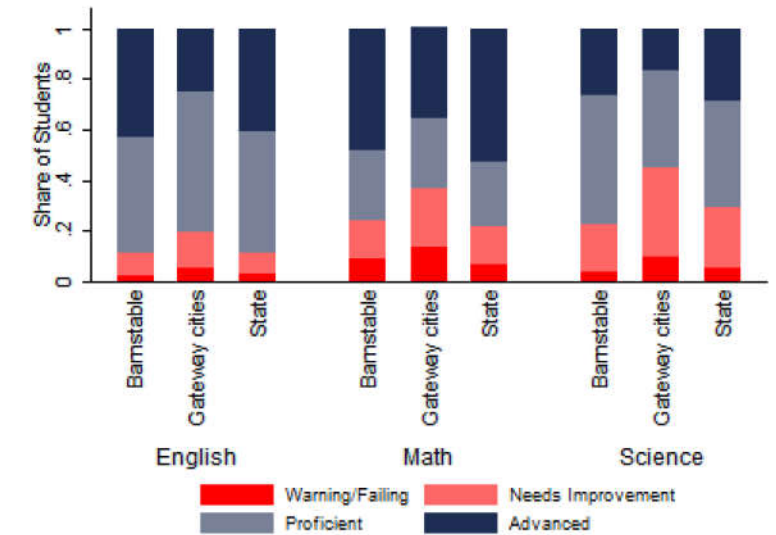
Indicator	Barnstable	Gateway Cities	State
Average class size	16.8	18.3	18.1
Percent Proficient or Advanced (English 10th)	89.0	80.3	90.0
Percent Proficient or Advanced (Math 10th)	75.0	63.4	79.0
Student Growth Percentile English (10th)	48.0	43.7	51.0
Student Growth Percentile Math (10th)	35.0	43.4	50.0
Graduates attending college or university†	77.6	69.7	76.6
Male Dropout Rate	7.4	11.8	6.7
Female Dropout Rate	7.4	7.9	4.4
English Language Learners Dropout Rate	11.8	16.8	14.9
Low Income Dropout Rate	12.7	11.8	10.2

†Percent of 2013 class

Housing Affordability



10th Grade MCAS Scores in 2014



Mortality and Health

	Barnstable	Gateway Cities	State
Lung Cancer Deaths (per 100,000 people) †	61.9	61.3	54.1
Cardiovascular Disease Deaths (per 100,000) †	355.9	254.7	237.4
Opioid Overdose Deaths (per 100,000)‡	24.7	25.5	13.0
HIV/Aids Prevalence Rate (per 100,000 people) 2010†	196.2	317.0	282.3
Admissions to DPH Substance Abuse Programs (per 100,000 people) ‡	2419	2189	1568
Hospital Discharges for Asthma (per 100,000) 2009	88.4	208.8	162.0
Percent overweight or obese children in grade 10 ‡	30.1	38.2	32.3
Percent of population on some form of non-private insurance 2013	31.5	36.1	17.2

†2010

‡2014

Civic Engagement

Voting Behavior in 2014

Indicator	Barnstable	Gateway Cities	State
Registered voters as percent of population aged 18 and above	87.0	75.1	76.0
Voters in 2014 election as percent of registered voters	58.0	43.5	72.7
Voters in 2014 election as percent of population aged 18 and above	50.4	32.8	55.2

Not-for-Profit Sector

Indicator (in \$ per capita)	Barnstable	Gateway Cities	State
Assets of Education, Finance, and Medical Non-Profits	-	10,152	27,527
Assets of Other Non-Profits	1,109	5,530	18,501
Revenue of Education, Finance, and Medical Non-Profits	-	4,361	10,472
Revenue of Other Non-Profits	342	3,050	10,589

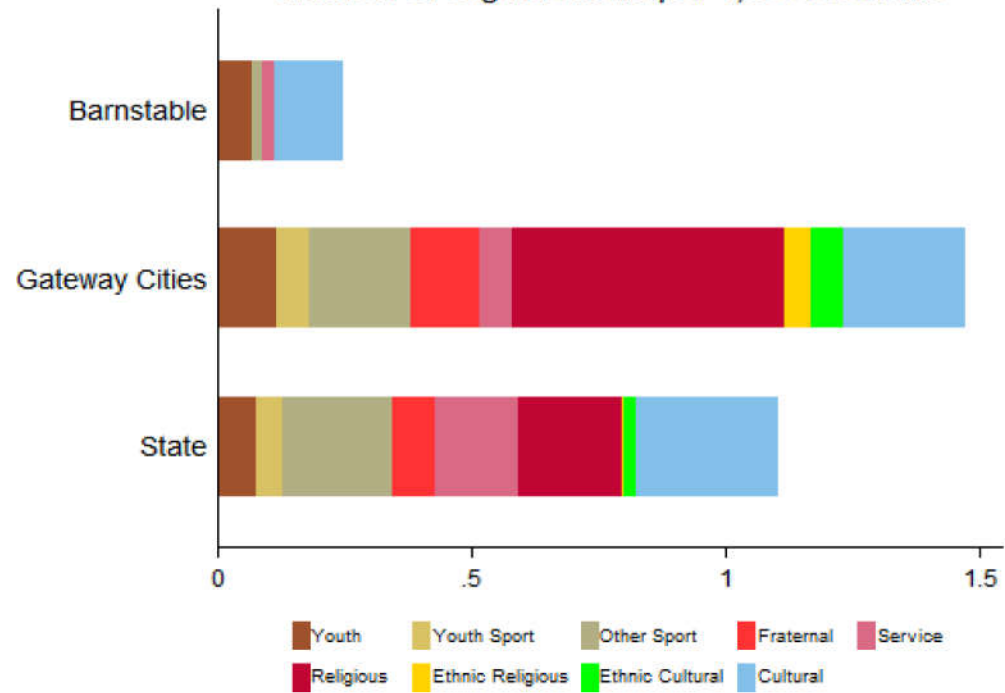
Other Nonprofits (in \$millions)

Name	Revenues	Assets	Area
OpenCape Corporation	11.04	36.02	Telecommunications
Trinity Christian Academy of Cape Cod Inc	1.13	4.09	Education
Association for the Preservation of Cape Cod Inc	0.64	1.18	Environment
Compact of Cape Cod Conservation Trusts Inc	0.58	0.84	Environment
Sturgis Library	0.42	4.53	Education
Cape Cod Art Association Inc	0.33	0.14	Arts & Culture
Cape Cod Young Professionals Inc	0.27	0.09	Employment
Friends Of Childrens Cove Inc	0.27	0.07	Crime & Law
Barnstable Yacht Club Inc	0.23	0.91	Sports
Barnstable County Deputy Sheriffs Association Inc	0.06	0.14	Youth Development
Barnstable Comedy Club Inc	0.06	0.17	Arts & Culture
Barnstable County Bar Association	0.05	0.04	Crime & Law
Pastel Painters Society of Cape Cod Inc	0.05	0.05	Arts & Culture
Friends of The Schoolhouse Inc	0.04	0.03	Community Improvement
Trayser Museum Directors Inc	0.03	0.11	Arts & Culture

Nonprofits with a strong associative component

Associative Nonprofits

Number of Organizations per 1,000 residents



Barnstable