

2016

Data Profiles - Attleboro

Mosakowski Institute
Clark University

John C. Brown
Clark University

Joe Krahe
Clark University

Sarah Philbrick
Clark University

Recommended Citation

Mosakowski Institute; Brown, John C.; Krahe, Joe; and Philbrick, Sarah, "Data Profiles - Attleboro" (2016). *Mosakowski Institute for Public Enterprise*. 64.
<https://commons.clarku.edu/mosakowskiinstitute/64>

This Article is brought to you for free and open access by the Academic Departments, Centers & Programs at Clark Digital Commons. It has been accepted for inclusion in Mosakowski Institute for Public Enterprise by an authorized administrator of Clark Digital Commons. For more information, please contact mkrikonis@clarku.edu, jodolan@clarku.edu.

Data Profiles - Attleboro

Keywords

data profiles, attleboro, gateway cities, working cities

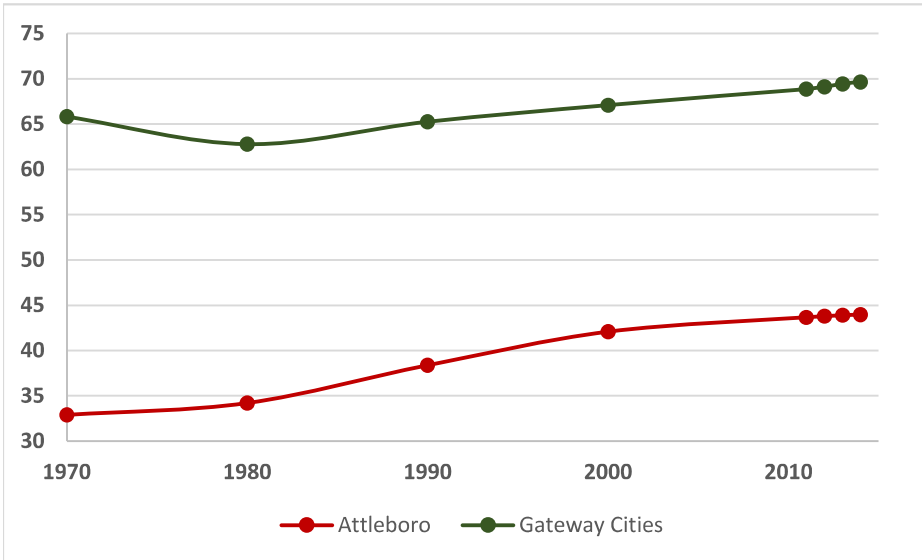


Attleboro

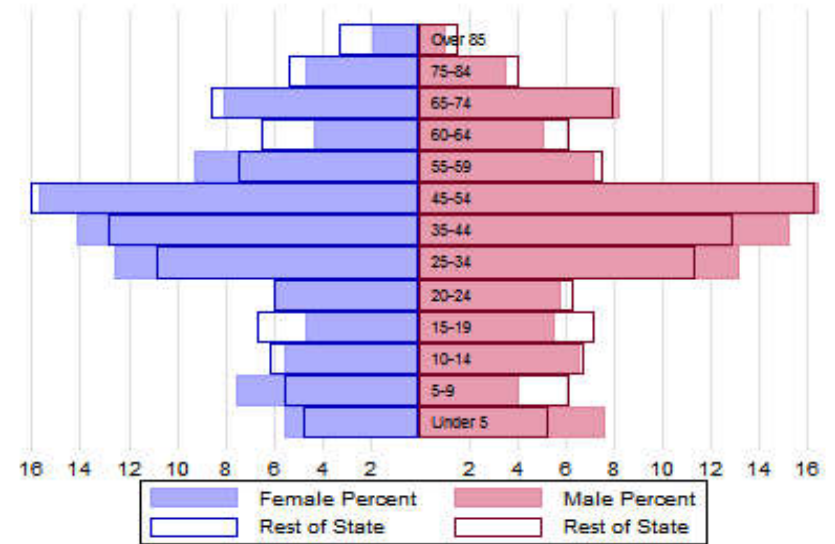


The Population

City Population 1970 to 2014



Population Distribution by Age Group



Population Distribution by Race and Ethnicity

Subgroups of the population as a percent of the total	2000	2013	Gateway Cities 2013	State 2013
White	91.3	87.6	73.8	89.0
Black	1.6	4.4	8.0	2.8
Asian	3.2	4.5	5.3	4.8
Foreign-born	8.9	9.4	19.9	12.1
Hispanic	4.3	6.3	19.6	4.3
Origin as percent of Hispanic				
Central America	31.0	35.4	15.8	20.3
Dominican Republic	2.1	4.3	14.4	17.9
Mexico	8.0	8.3	5.5	11.4
Puerto Rico	32.9	30.9	45.5	33.6

Recent Demographic Behavior

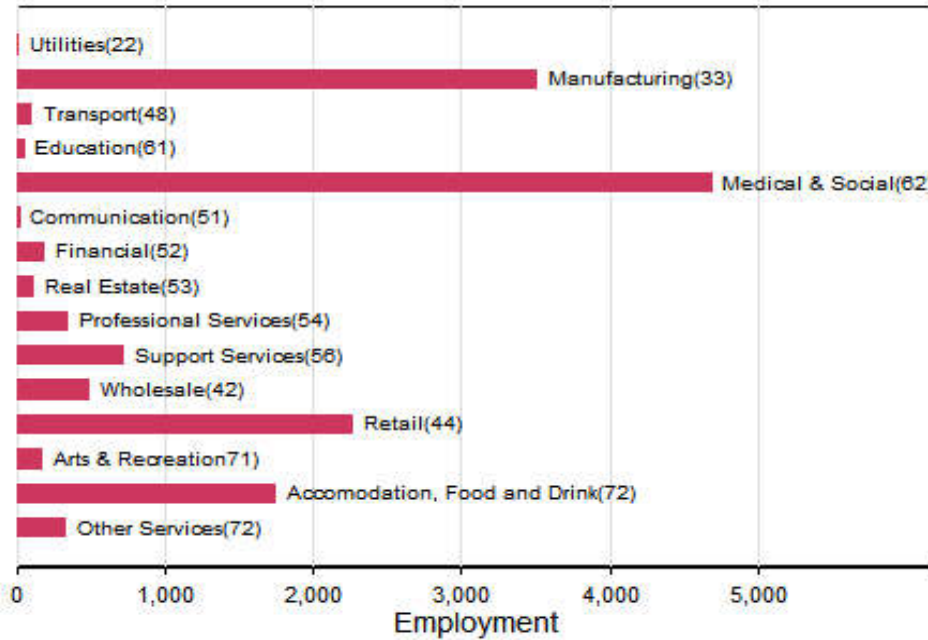
Indicator	Attleboro	Gateway Cities	State
Birth Rate (per 1,000 females 15-44)	53.8	62.1	52.8
Low birthweight (<2.5 kg. % of births)	8.4	8.0	7.7
Births to teen mothers (15-19 years)†	3.5	6.0	3.8
Birth rate of teen mothers‡	11.9	22.3	12.0
Infant mortality (per 1,000 live births)	5.7	4.9	4.4
Mortality rate (per 100,000 residents)	816.8	844.9	800.0

†As percent of all births

‡Per 1,000 females aged 15-19 years

The Local Economy

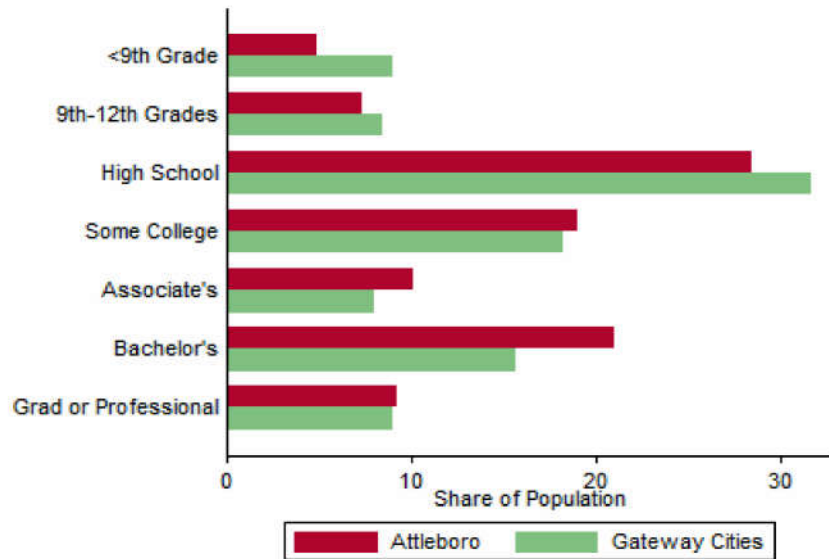
Employment by Major Sectors: 2012 (2-digit NAICS)



The Five Largest Industries: 2012 (4-digit NAICS industries)

Description	NAICS	Employment
Restaurants	7225	1000-2499
General Hospitals	6221	1000-2499
Miscellaneous Manufacturing	3399	500-999
Electrical Equipment	3359	500-999
Skilled Nursing Facilities	6231	500-999

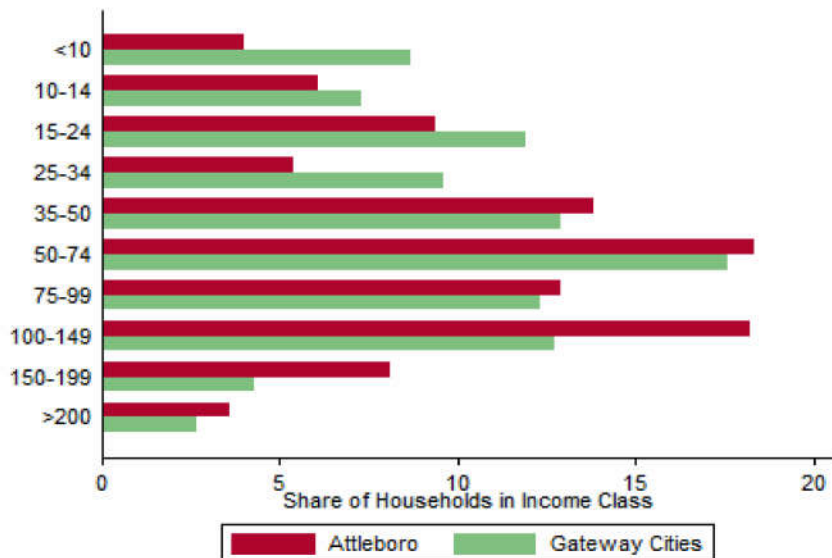
Educational Attainment of the Population Aged 25 and Older



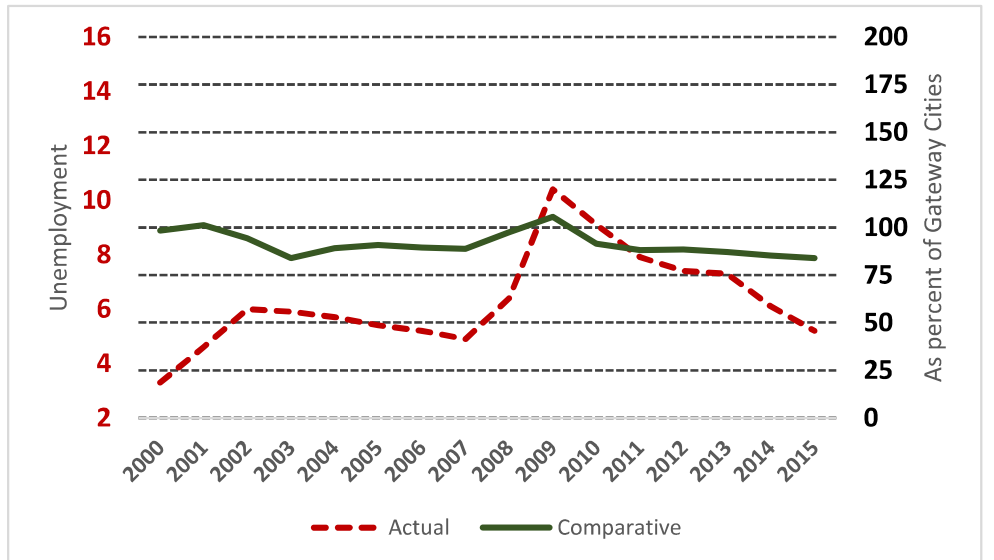
Key Indicators of Income and Commuting

Indicator	Attleboro	Gateway Cities
Median Family Income (\$)	65,127	60,087
Families below Poverty Line (%)	7.4	14.3
Children < 18 below Poverty Line (%)	14.7	25.5
Families with Food Assistance (%)	13.1	20.8
Mean Travel Time to Work (Mins.)	30.5	26.4
Commute with Public Transit (%)	4.7	8.6

Distribution of Households by Income Class (in \$1,000)



Unemployment Rate: 2000-2015

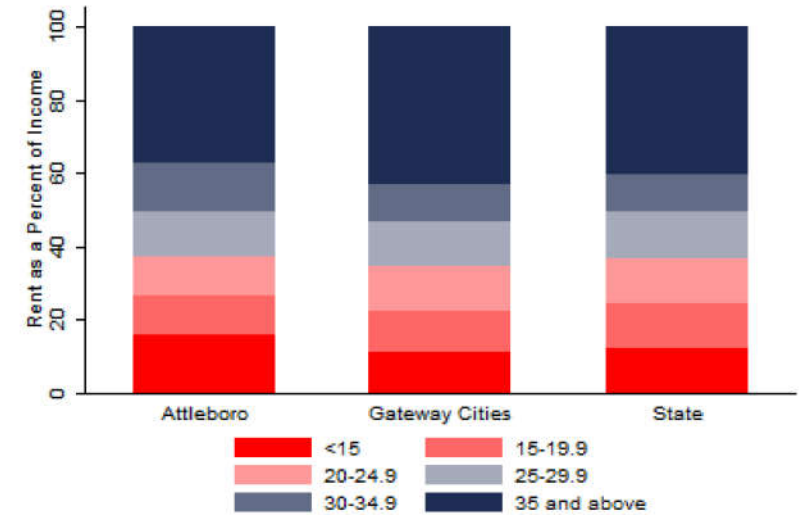


Housing

Housing Market Indicators in 2013

Indicator	Attleboro	Gateway Cities	State
Share owner-occupied	0.64	0.50	0.62
Median Home Value	269,100	252,085	325,800
Average Rent for Studio	963	735	746
Average Rent for One-Bedroom	678	786	765
Average Rent for Two-Bedroom	1140	1097	926
Average Rent for Three-Bedroom	1226	1182	863
Average Size of Owner-Occupied Households	2.22	2.68	2.25
Average Size of Tenant Households	2.81	2.38	2.70

Housing Affordability



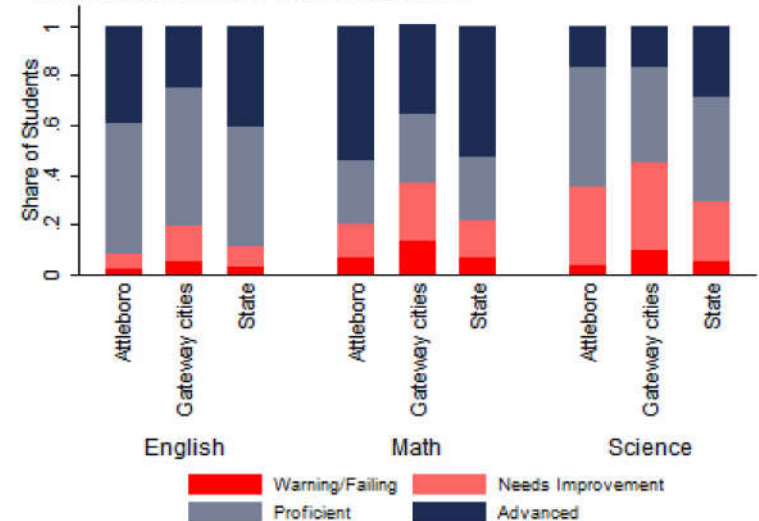
Education

Indicators for 2014

Indicator	Attleboro	Gateway Cities	State
Average class size	19.5	18.3	18.1
Percent Proficient or Advanced (English 10th)	92.0	80.3	90.0
Percent Proficient or Advanced (Math 10th)	80.0	63.4	79.0
Student Growth Percentile English (10th)	58.0	43.7	51.0
Student Growth Percentile Math (10th)	45.5	43.4	50.0
Graduates attending college or university†	75.1	69.7	76.6
Male Dropout Rate	9.2	11.8	6.7
Female Dropout Rate	1.0	7.9	4.4
English Language Learners Dropout Rate	33.3	16.8	14.9
Low Income Dropout Rate	9.1	11.8	10.2

†Percent of 2013 class

10th Grade MCAS Scores in 2014



Mortality and Health

	Attleboro	Gateway Cities	State
Lung Cancer Deaths (per 100,000 people) †	75.7	61.3	54.1
Cardiovascular Disease Deaths (per 100,000) †	222.6	254.7	237.4
Opioid Overdose Deaths (per 100,000)‡	20.5	25.5	13.0
HIV/Aids Prevalence Rate (per 100,000 people) 2010†	92.2	317.0	282.3
Admissions to DPH Substance Abuse Programs (per 100,000 people) ‡	1117	2189	1568
Hospital Discharges for Asthma (per 100,000) 2009	119.3	208.8	162.0
Percent overweight or obese children in grade 10 ‡	39.0	38.2	32.3
Percent of population on some form of non-private insurance 2013	23.6	36.1	17.2

†2010

‡2014

Civic Engagement

Voting Behavior in 2014

Indicator	Attleboro	Gateway Cities	State
Registered voters as percent of population aged 18 and above	79.5	75.1	76.0
Voters in 2014 election as percent of registered voters	45.4	43.5	72.7
Voters in 2014 election as percent of population aged 18 and above	36.1	32.8	55.2

Not-for-Profit Sector

Indicator (in \$ per capita)	Attleboro	Gateway Cities	State
Assets of Education, Finance, and Medical Non-Profits	10,229	10,152	27,527
Assets of Other Non-Profits	1,537	5,530	18,501
Revenue of Education, Finance, and Medical Non-Profits	5,092	4,361	10,472
Revenue of Other Non-Profits	1,555	3,050	10,589

Major Nonprofits in Education, Finance and Health Services (in \$millions)

Name	Revenues	Assets	Area
Sturdy Memorial Hospital Inc	169.58	364.53	Healthcare
Sturdy Memorial Associates Inc	36.20	7.31	Healthcare
Community Visiting Nurse Agency Inc	8.58	2.27	Healthcare
Healthcare Options Inc	3.34	0.74	Healthcare
Community Health Systems Inc	3.02	23.57	Healthcare
Sturdy Memorial Foundation Inc	2.07	49.57	Healthcare
Massachusetts Association of Blood Banks	0.01		Healthcare

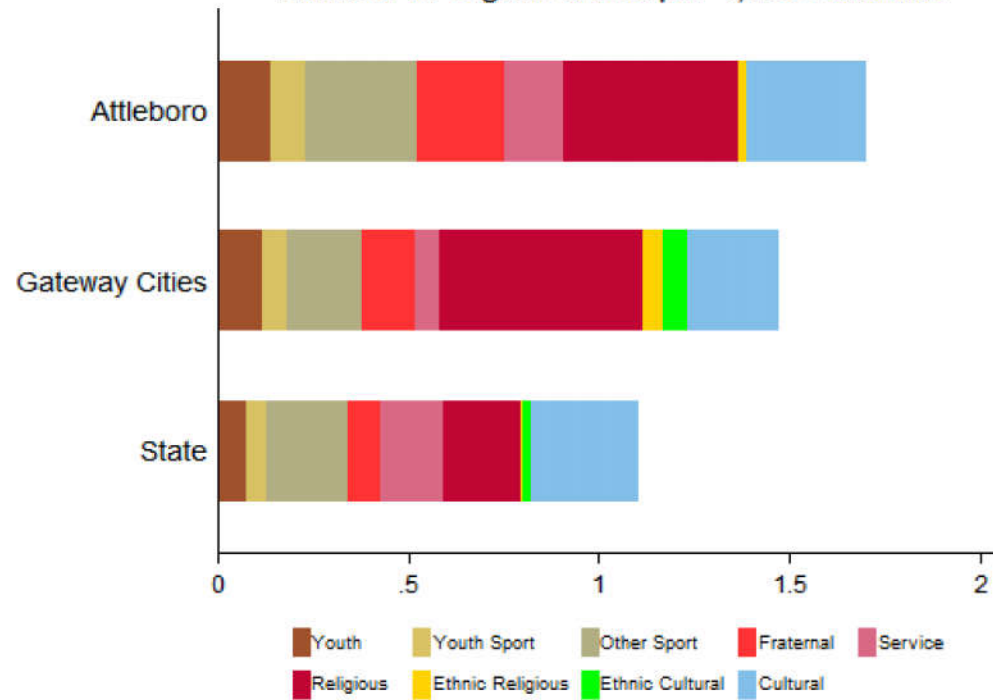
Other Nonprofits (in \$millions)

Name	Revenues	Assets	Area
Amego Inc	27.92	15.08	Human Services
The Arc of Bristol County Inc	7.39	3.61	Human Services
Attleboro Corporate Center Association Inc	5.48	0.17	Food & Agriculture
YMCA of Attleboro	3.86	11.85	Human Services
Beta Community Partnerships Inc	3.83	2.29	Human Services
New Hope Inc	2.47	1.36	Human Services
United Way of Greater Attleboro/Taunton Inc	2.37	3.91	Philanthropy
Markman Children's Programs Inc	2.34	3.31	Human Services
Manufacturing Jewelers and Suppliers of America Inc	2.14	1.11	Trade Association
National Council of The United States Society of St Vincent Depaul	1.59	0.35	Human Services
Massachusetts Music Educators Association Inc	0.82	0.53	Education
Attleboro Scholarship Foundation	0.72	4.55	Education
Attleboro Access Cable System Inc	0.62	1.72	Arts & Culture
Explosion Soccer Foundation Inc	0.49	0.11	Sports
Attleboro Arts Museum Inc	0.45	1.81	Arts & Culture

Nonprofits with a strong associative component

Associative Nonprofits

Number of Organizations per 1,000 residents



Attleboro