

Winter 12-1-2016

Data Profiles-Rhode Island-West Warick

John C. Brown
Clark University

Richard A. Ramswak
Clark University

James R. Gomes
Clark University

Recommended Citation

Brown, John C.; Ramswak, Richard A.; and Gomes, James R., "Data Profiles-Rhode Island-West Warick" (2016). *Mosakowski Institute for Public Enterprise*. 81.
<http://commons.clarku.edu/mosakowskiinstitute/81>

This Article is brought to you for free and open access by the Academic Departments, Centers & Programs at Clark Digital Commons. It has been accepted for inclusion in Mosakowski Institute for Public Enterprise by an authorized administrator of Clark Digital Commons. For more information, please contact celwell@clarku.edu.

Data Profiles-Rhode Island-West Warick

Abstract

We continue support the Federal Bank of Boston “Working Cities” challenge which aims to support social and economic recovery of underperforming small and mid-sized cities in the New England region. We continue to extend our data profiles of these cities located in Massachusetts, Rhode Island and now Connecticut. It is our hope that these data ‘rich” profiles which includes key indicators on health, population and demographic changes, industrial growth, and educational performance can not only support policy development in these targeted areas, but also help in monitoring the progress these cities make over time.

Keywords

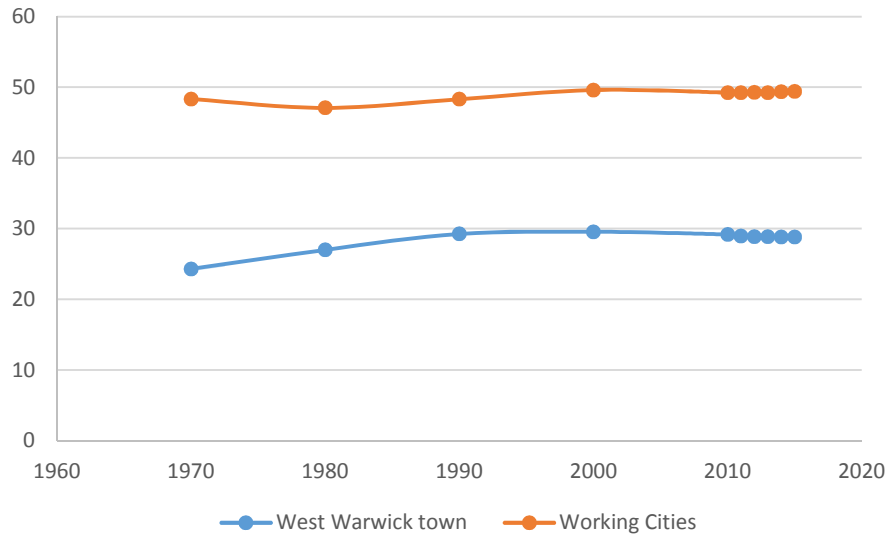
Working Cities, Mosakowski Institute, Clark University, Data Profiles, Rhode Island, West Warick

Follow this and additional works at: <http://commons.clarku.edu/mosakowskiinstitute>

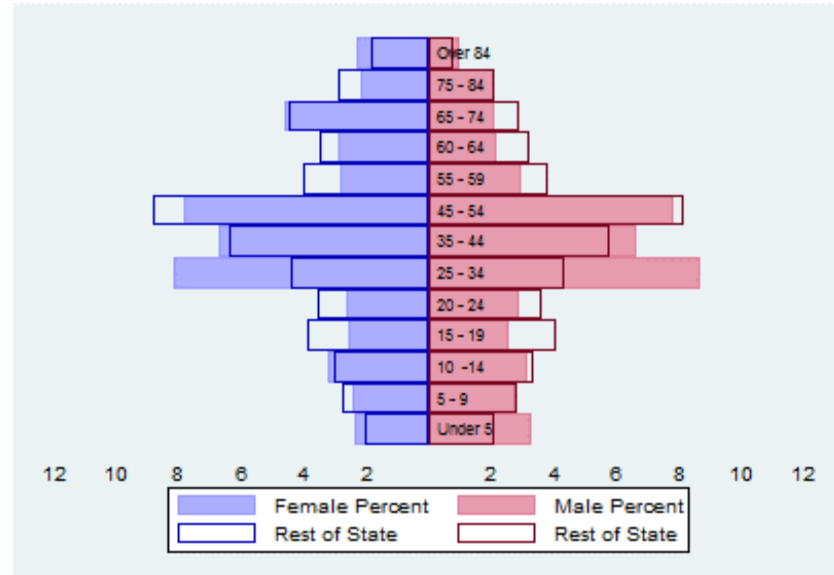


Part of the [Economic Policy Commons](#), [Education Policy Commons](#), [Geographic Information Sciences Commons](#), [Growth and Development Commons](#), [Health Economics Commons](#), [Health Policy Commons](#), [Human Geography Commons](#), [Public Affairs Commons](#), [Public Economics Commons](#), [Public Policy Commons](#), [Social Policy Commons](#), [Social Statistics Commons](#), [Social Welfare Commons](#), [Sociology Commons](#), [Urban Studies Commons](#), and the [Urban Studies and Planning Commons](#)

The Population City Population 1970 to 2014



Population Distribution by Age Group



Population Distribution by Race and Ethnicity

| Subgroups of the population as a percentage of the total | 2000 | 2013 | Working Cities 2013 | State 2013 |
|--|------|------|---------------------|------------|
| White | 92.3 | 86.7 | 73.7 | 75.7 |
| Black | 1.0 | 3.1 | 5.0 | 5.3 |
| Asian | 1.4 | 3.0 | 3.2 | 3.0 |
| Foreign-Born | 7.1 | 7.7 | 13.9 | 13.1 |
| Hispanic | 3.1 | 5.0 | 15.1 | 12.9 |
| Origin as percent of Hispanic | | | | |
| Central America | 6.3 | 6.7 | 14.6 | 17.3 |
| Dominican Republic | 6.6 | 11.2 | 9.4 | 17.1 |
| Mexico | 37.7 | 5.2 | 2.6 | 2.6 |
| Puerto Rico | 24.0 | 0.0 | 10.3 | 9.8 |

Recent Demographic Behavior

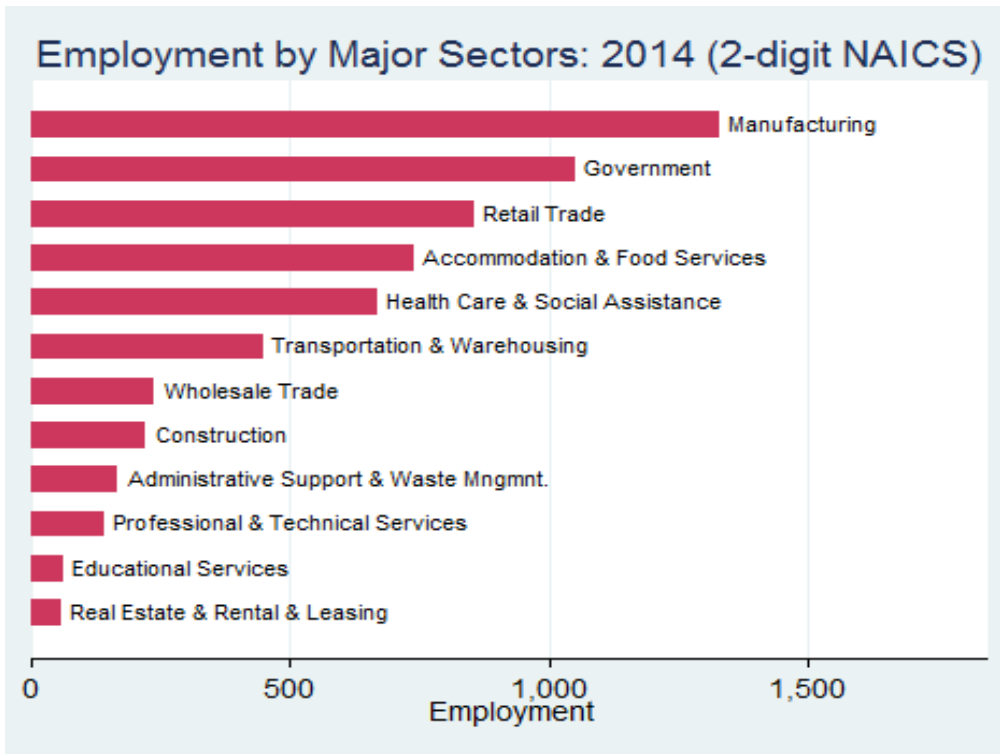
| Indicator | West Warwick | Working Cities | State |
|--|--------------|----------------|-------|
| Birth Rate (per 1,000 females 15-44) | 67.9 | 57.8 | 59.6 |
| Low birthweight (<2.5 kg. % of births) | 7.8 | 8.6 | 7.9 |
| Births to teen mothers (15-19 years)† | 8.1 | 10.9 | 9.0 |
| Birth rate of teen mothers‡ | 4.3 | 3.7 | 2.9 |
| Infant mortality (per 1,000 live births) | 6.5 | 6.1 | 6.4 |
| Mortality rate (per 100,000 residents) | 940.0 | 938.0 | 950.0 |

†As percent of all births

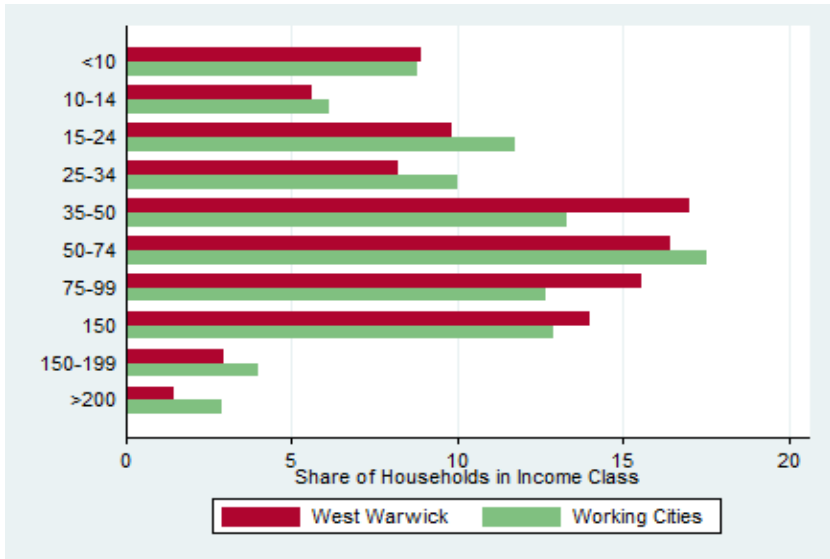
‡Per 1,000 females aged 15-19 years

The Local Economy

Employment by Major Sectors: 2012 (2-digit NAICS)



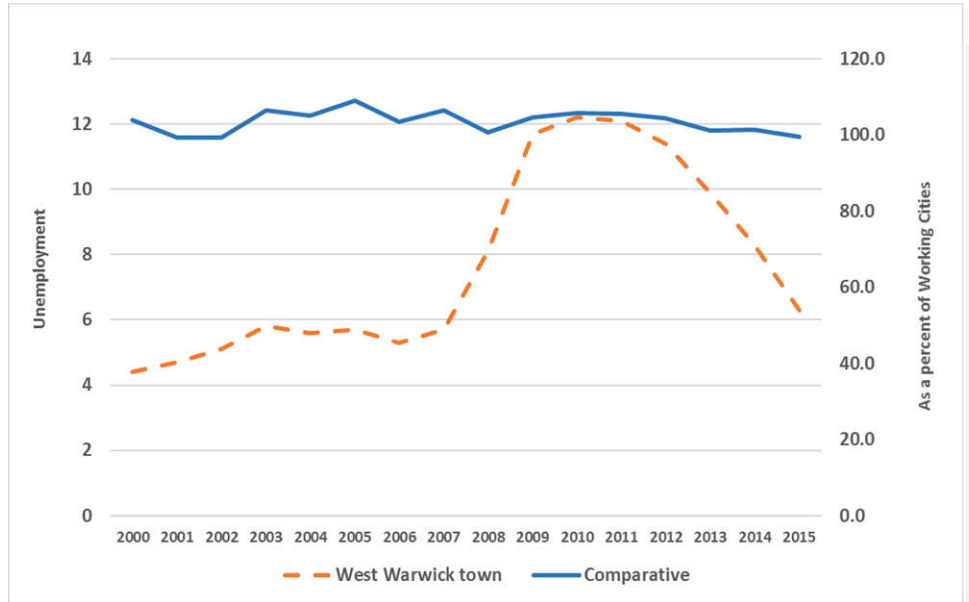
Educational Attainment of the Population Aged 25 and Older



Key Indicators of Income and Commuting

| Indicator | West Warwick | Working Cities |
|--------------------------------------|--------------|----------------|
| Median Family Income (\$) | 50,590 | 50,837 |
| Families below Poverty Line (%) | 11.0 | 12.3 |
| Children < 18 below Poverty Line (%) | 20.5 | 19.3 |
| Families with Food Assistance (%) | 14.7 | 17.1 |
| Commute with Public Transit (%) | 2.5 | 2.6 |

Unemployment Rate: 2000-2015

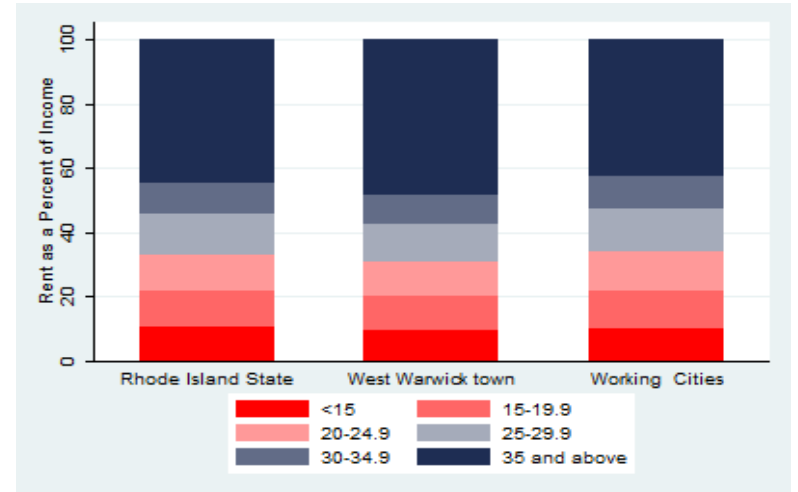


Housing

Housing Market Indicators in 2013

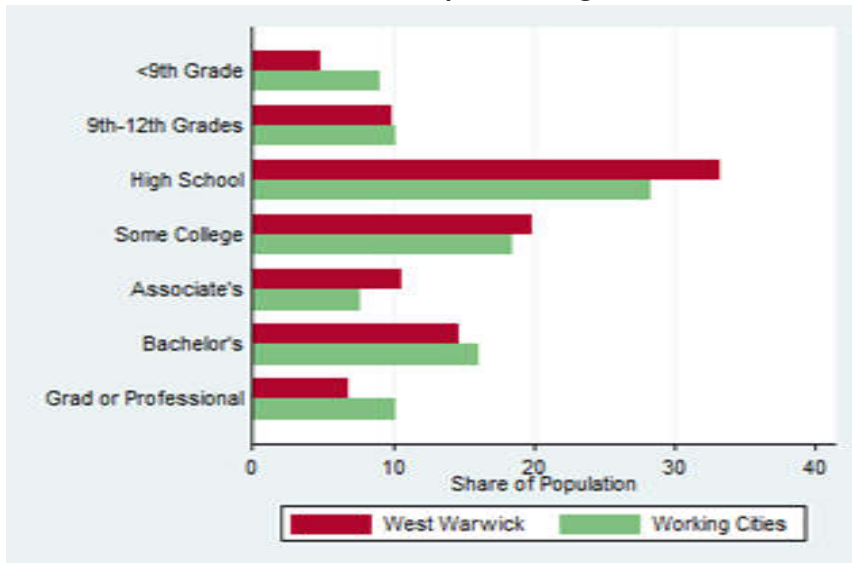
| Indicator | West Warwick | Working Cities | State |
|---|--------------|----------------|---------|
| Share owner-occupied | 54.2 | 54.7 | 61.2 |
| Median Home Value | 198,200 | 226,192 | 247,400 |
| Average Size of Owner-Occupied Households | 2.4 | 2.6 | 2.6 |
| Average Size of Tenant Households | 2.2 | 2.2 | 2.2 |

Housing Affordability



Education

Educational Attainment of the Population Aged 25 and Older



Mortality and Health

| | West Warwick | Working Cities |
|--|---------------------|-----------------------|
| Lung Cancer Deaths (per 100,000) | 62.4 | 60.8 |
| Cardiovascular Disease Deaths (per 100,000) | 308.5 | 270.1 |
| HIV/AIDS Prevalence Rate (per 100,000) | 116.5 | 238.5 |
| Opioids Overdose Deaths (per 100,000) | 24.3 | 23.3 |
| Admissions to DPH Substance Abuse Programs (per 100,000) | 8281.9 | 6771.4 |
| Hospital Discharges for Asthma (per 100,000) | 135.2 | 159.9 |

2014

Civic Engagement

Voting Behaviour in 2014

| | West Warwick town | Working Cities |
|--|-------------------|----------------|
| Registered Voters as a percent of registered Voters | 84.7 | 85.6 |
| Voters in 2014 election as percent of registered voters | 42.5 | 65.2 |
| Voters in 2014 election as percent of population aged 18 and above | 36.0 | 55.8 |

Not-for-Profit Sector

| Indicator (in \$ per capita) | West Warwick | Working Cities | State |
|---|--------------|----------------|-----------|
| Assets of Education, Finance and Medical Non-Profits | - | 11,450.84 | 16,053.18 |
| Assets of Other Non-Profits | 593.12 | 10,384.89 | 45,501.65 |
| Revenue of Education, Finance and Medical Non-Profits | - | 4,966.32 | 6,117.99 |
| Revenue of Other Non-Profits | 406.61 | 4,067.27 | 25,333.23 |

Other Non-Profits

| Name | Revenues | Assets | Area |
|--|-----------------|---------------|--------------------|
| TIDES FAMILY SERVICES INC | 7.3 | 3.8 | Human Services |
| WEST WARWICK SENIOR CITIZENS CENTER INC | 0.8 | 2.6 | Human Services |
| ROYAL ARCH MASONS OF RHODE ISLAND & PROVIDENCE PLANTATIONS | 0.2 | 1.8 | Membership Benefit |
| DEANGELIS MANOR II C/O NHP | -0.3 | 1.5 | Housing |
| CENTREVILLE SAVINGS BANK CHARITABLE FOUNDATION | 0.0 | 1.1 | Philanthropy |
| GALKIN PRIVATE FOUNDATION | 0.2 | 0.9 | Philanthropy |
| ISLAMIC SCHOOL OF RHODE ISLAND INC | 0.7 | 0.9 | Religion-Related |
| PROVIDENCE-HAITI OUTREACH CORP | 0.2 | 0.5 | Foreign Affairs |
| PHENIX SPORTSMENS CLUB | 0.1 | 0.4 | Sports |
| ORDER OF THE EASTERN STAR OF RHODE ISLAND GRAND CHAPTER | 0.1 | 0.4 | Membership Benefit |
| SAVE THE MONTAGNARD PEOPLE INC | 0.0 | 0.4 | Human Services |
| CLUB FRONTENAC INC | 0.1 | 0.4 | Sports |
| THE ARTIC MISSION | 0.1 | 0.2 | Religion-Related |
| VETERANS OF FOREIGN WARS DEPT OF RHODE ISLAND | 0.0 | 0.2 | Public Benefit |
| THE ZETTERBERGS FOUNDATION | 0.2 | 0.2 | Philanthropy |
| SONS OF ITALY IN AMERICA | 0.1 | 0.1 | Membership Benefit |
| AMERICAN LEGION | 0.2 | 0.1 | Public Benefit |
| JOYFUL NOISE INC | 0.7 | 0.1 | Human Services |
| BENEVOLENT & PROTECTIVE ORDER OF ELKS OF THE USA | 0.1 | 0.1 | Membership Benefit |
| WEST WARWICK SOCCER ASSOCIATION | 0.1 | 0.0 | Sports |
| WEST WARWICK ASSISTANCE AGENCY INC | 0.1 | 0.0 | Human Services |
| WHODUNNIT MASSACHUSETTS INC | 0.0 | 0.0 | Arts&Culture |
| RHODE ISLAND CONSTABLES INC | | 0.0 | Crime & Law |
| RHODE ISLAND STATEWIDE COALITIONINC | 0.1 | 0.0 | Public Benefit |