

Winter 12-1-2016

# Data Profiles-Rhode Island-Central Falls

John C. Brown  
*Clark University*

Richard A. Ramsawak  
*Clark University*

James R. Gomes  
*Clark University*

---

## Recommended Citation

Brown, John C.; Ramsawak, Richard A.; and Gomes, James R., "Data Profiles-Rhode Island-Central Falls" (2016). *Mosakowski Institute for Public Enterprise*. 71.  
<http://commons.clarku.edu/mosakowskiinstitute/71>

This Article is brought to you for free and open access by the Academic Departments, Centers & Programs at Clark Digital Commons. It has been accepted for inclusion in Mosakowski Institute for Public Enterprise by an authorized administrator of Clark Digital Commons. For more information, please contact [celwell@clarku.edu](mailto:celwell@clarku.edu).

---

## Data Profiles-Rhode Island-Central Falls

### **Abstract**

We continue support the Federal Bank of Boston “Working Cities” challenge which aims to support social and economic recovery of underperforming small and mid-sized cities in the New England region. We continue to extend our data profiles of these cities located in Massachusetts, Rhode Island and now Connecticut. It is our hope that these data ‘rich” profiles which includes key indicators on health, population and demographic changes, industrial growth, and educational performance can not only support policy development in these targeted areas, but also help in monitoring the progress these cities make over time.

### **Keywords**

Working Cities, Mosakowski Institute, Clark University, Data Profiles, Rhode Island

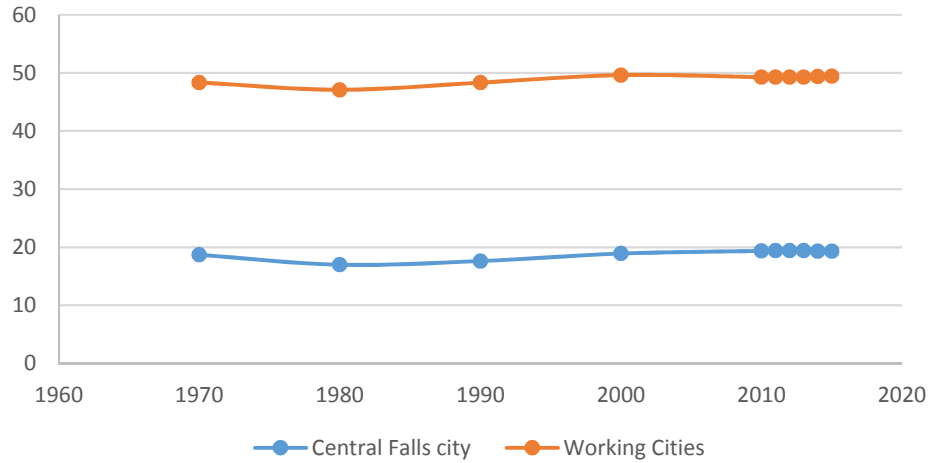
Follow this and additional works at: <http://commons.clarku.edu/mosakowskiinstitute>



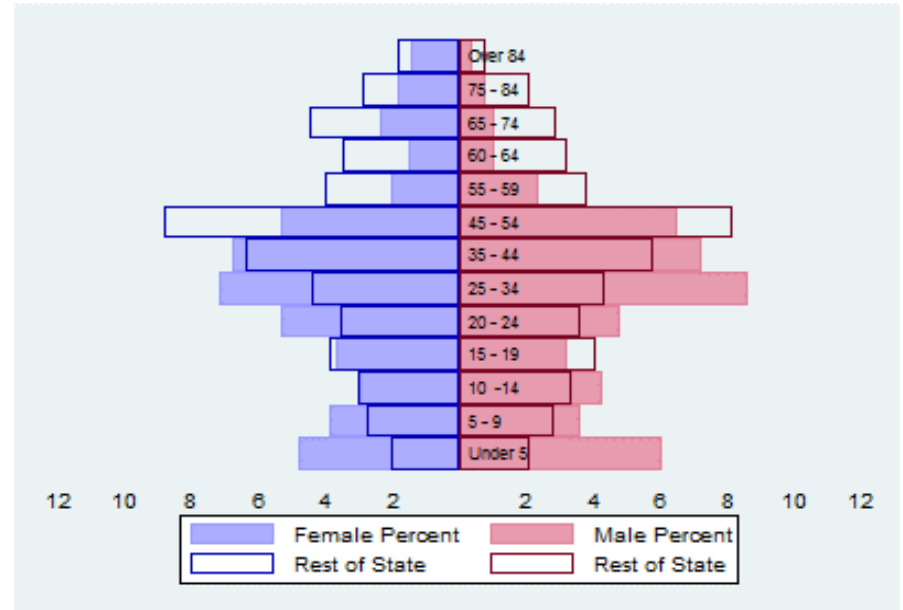
Part of the [Economic Policy Commons](#), [Education Policy Commons](#), [Growth and Development Commons](#), [Health Economics Commons](#), [Health Policy Commons](#), [Human Geography Commons](#), [Public Affairs Commons](#), [Public Economics Commons](#), [Public Policy Commons](#), [Urban Studies Commons](#), and the [Urban Studies and Planning Commons](#)

## The Population

### City Population 1970 to 2014



## Population Distribution by Age Group



## Population Distribution by Race and Ethnicity

percentage of the total	2000	2013	Cities 2013	2013
White	40.0	24.4	73.7	75.7
Black	4.3	6.7	5.0	5.3
Asian	0.6	0.0	3.2	3.0
Foreign-Born	35.1	38.2	13.9	13.1
Hispanic	47.8	65.7	15.1	12.9
<b>Origin as percent of Hispanic</b>				
Central America	15.7	29.4	14.6	17.3
Dominican Republic	6.4	8.6	9.4	17.1
Mexico	7.5	7.7	2.6	2.6
Puerto Rico	24.9	8.2	10.3	9.8

## Recent Demographic Behavior

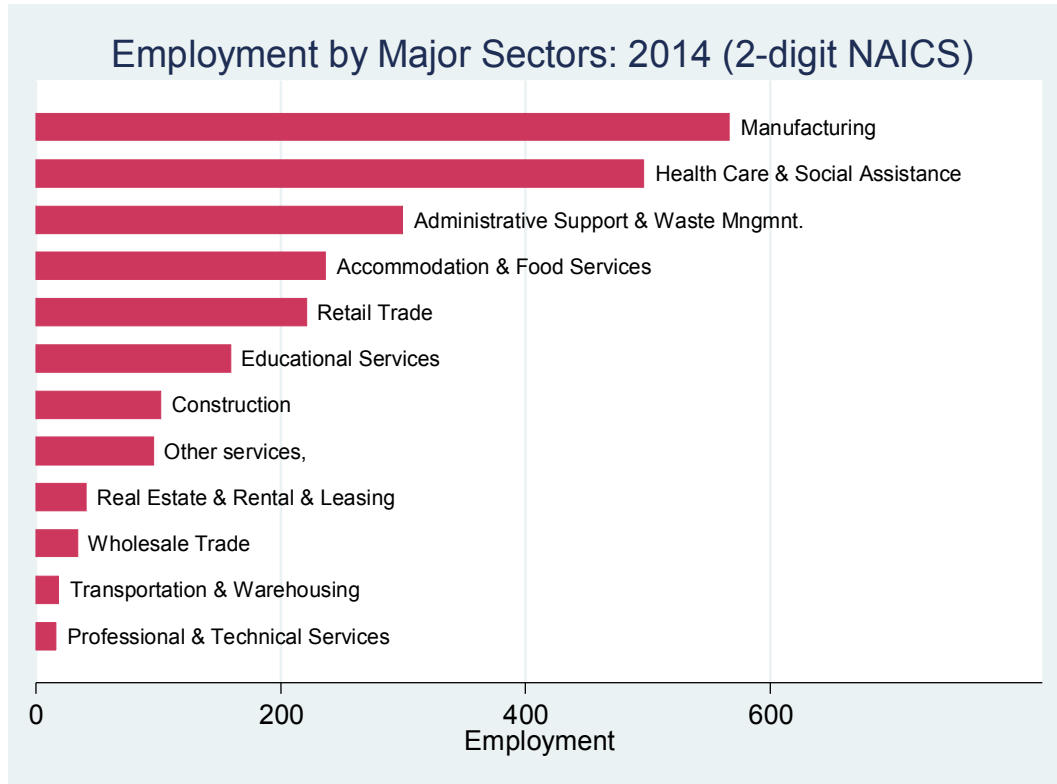
Indicator	Central Falls	Working Cities	State
Birth Rate (per 1,000 females 15-44)	93.4	57.8	59.6
Low birthweight (<2.5 kg. % of births)	6.7	8.6	7.9
Births to teen mothers (15-19 years)†	14.4	10.9	9.0
Birth rate of teen mothers‡	8.3	3.7	2.9
Infant mortality (per 1,000 live births)	6.5	6.1	6.4
Mortality rate (per 100,000 residents)	770.0	938.0	950.0

†As percent of all births

‡Per 1,000 females aged 15-19 years

# The Local Economy

## Employment by Major Sectors: 2012 (2-digit NAICS)



## The Five Largest Industries: 2012 (4-digit NAICS Industries)

Description	NAICS	Employees
Fabric mills	3132	100-249
Nursing Facilities	6231	100-249
Facilities support services	5612	100-249
Individual and family services	6241	100-249
Restaurants	7225	20-99

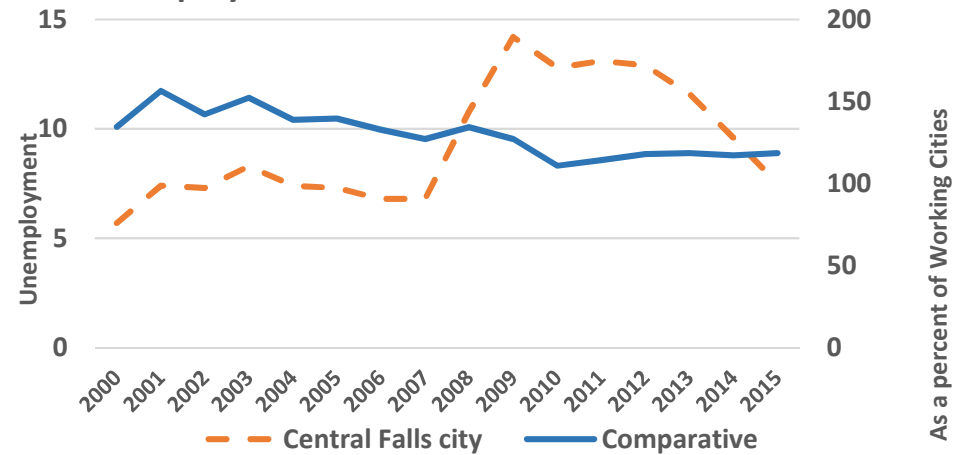
### Distribution of Households by Income Class (in \$1,000)



### Key Indicators of Income and Commuting

Indicator	Central Falls	Working Cities
Median Family Income (\$)	27,993	50,837
Families below Poverty Line (%)	30.6	12.3
Children < 18 below Poverty Line (%)	39.5	19.3
Families with Food Assistance (%)	38.7	17.1
Commute with Public Transit (%)	3.6	2.6

### Unemployment Rate 2000 - 2015

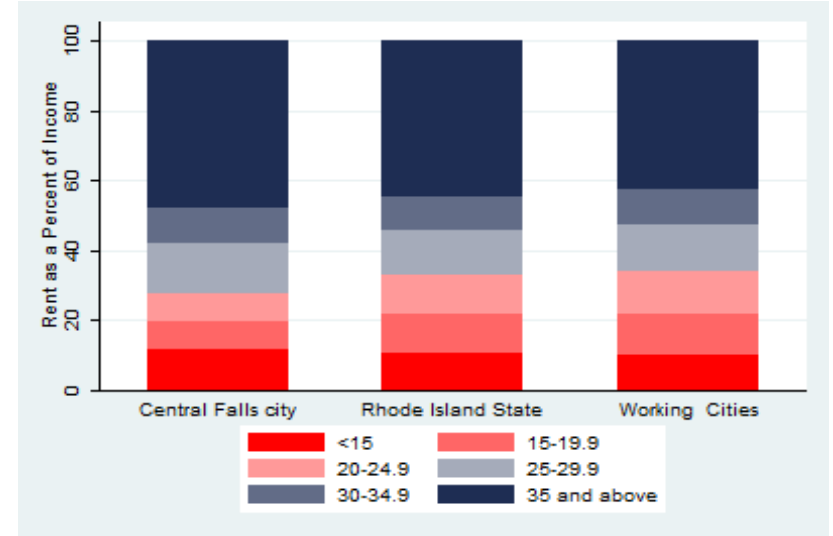


# Housing

## Housing Market Indicators in 2013

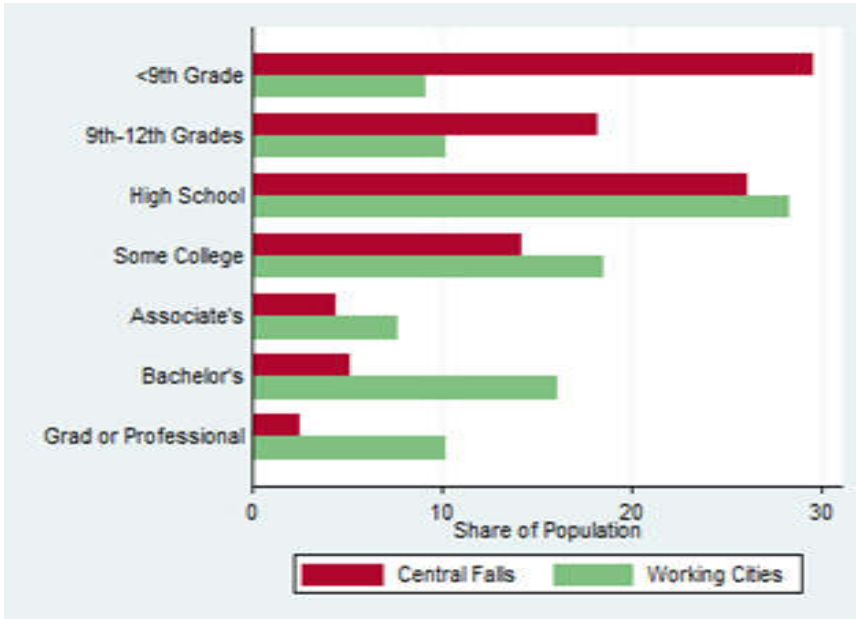
Indicator	Central Falls	Working Cities	State
Share owner-occupied	27.1	54.7	61.2
Median Home Value	167,600	226,192	247,400
Average Size of Owner-Occupied Households	3.1	2.6	2.6
Average Size of Tenant Households	2.9	2.2	2.2

## Housing Affordability



# Education

## Educational Attainment of the Population Aged 25 and Older



**Mortality and Health**

	<b>Central Falls</b>	<b>Working Cities</b>
Lung Cancer Deaths (per 100,000)	77.7	60.8
Cardiovascular Disease Deaths (per 100,000)	165.5	270.1
HIV/AIDS Prevalence Rate (per 100,000)	454.2	238.5
Opioids Overdose Deaths (per 100,000)	36.2	23.3
Admissions to DPH Substance Abuse Programs (per 100,000)	6410.1	6771.4
Hospital Discharges for Asthma (per 100,000)	196.6	159.9

**2014**

## Voting Behaviour in 2014

	Central Falls city	Working Cities
Registered Voters as a percent of registered Voters	63.6	85.6
Voters in 2014 election as percent of registered voters	47.7	65.2
Voters in 2014 election as percent of population aged 18 and above	30.4	55.8

## Not-for-Profit Sector

Indicator (in \$ per capita)	Central Falls	Working Cities	State
Assets of Education, Finance and Medical Non-Profits	6,403.30	11,450.84	16,053.18
Assets of Other Non-Profits	1,285.82	10,384.89	45,501.65
Revenue of Education, Finance and Medical Non-Profits	325.69	4,966.32	6,117.99
Revenue of Other Non-Profits	934.68	4,067.27	25,333.23



**Other Non-Profits**

<b>Name</b>	<b>Revenues</b>	<b>Assets</b>	<b>Area</b>
DEXTER CREDIT UNION INC	6.31	123.70	Public Benefit
REALTY ENDEAVORS FOR AFFORDABLE COMMUNITY HOUSING INC	0.93	5.73	Housing
PROGRESSO LATINO	1.59	1.61	Human Services
MOSHASSUCK CEMETERY	0.15	1.45	Membership Benefit
BLACK STONE VALLEY ADVOCACY CENTER	0.91	1.05	Human Services
CENTRAL FALLS AFFORDABLE HOUSING CORP	0.06	0.61	Housing
CAMP KER-ANNA	0.26	0.45	Sports
CENTRAL FALLS FAM SELF SUFFICIENCY FOUNDATION	0.03	0.07	Employment
COLUMBIAN-AMERICAN CULTURAL SOCIETY INC	0.01	0.02	Arts&Culture
FUERZA LABORAL	0.13	0.01	Employment